



RALPH M. TERRAZAS  
FIRE CHIEF

September 29, 2015

BOARD OF FIRE COMMISSIONERS  
FILE NO. 15-109

TO: Board of Fire Commissioners

FROM:  Ralph M. Terrazas, Fire Chief

SUBJECT: FISCAL YEAR 2015-16 ANNUAL ORGANIZATION CHART

FINAL ACTION:	<input type="checkbox"/> Approved	<input type="checkbox"/> Approved w/Corrections	<input type="checkbox"/> Withdrawn
	<input type="checkbox"/> Denied	<input type="checkbox"/> Received & Filed	<input type="checkbox"/> Other

### SUMMARY

In accordance with the Department manual for Budget System of the City of Los Angeles, the annual Organization Chart is submitted for your approval.

### RECOMMENDATIONS

That the Board:

1. Adopt and sign the attached Organization Chart for Fiscal Year 2015-16.
2. Authorize the Personnel Services Section to make technical adjustments, as necessary, to implement the Board's intention.

### CONCLUSION

Upon approval, please return the approved and signed board report and the original Organizational Chart for Fiscal Year 2015-16 to Sandy Lai at Personnel Services Section.

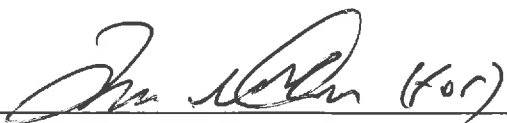
Board report prepared by Sandy Lai, Personnel Analyst II, Personnel Services Section.

Attachment



# LOS ANGELES FIRE DEPARTMENT ORGANIZATION CHART FISCAL YEAR 2015-2016

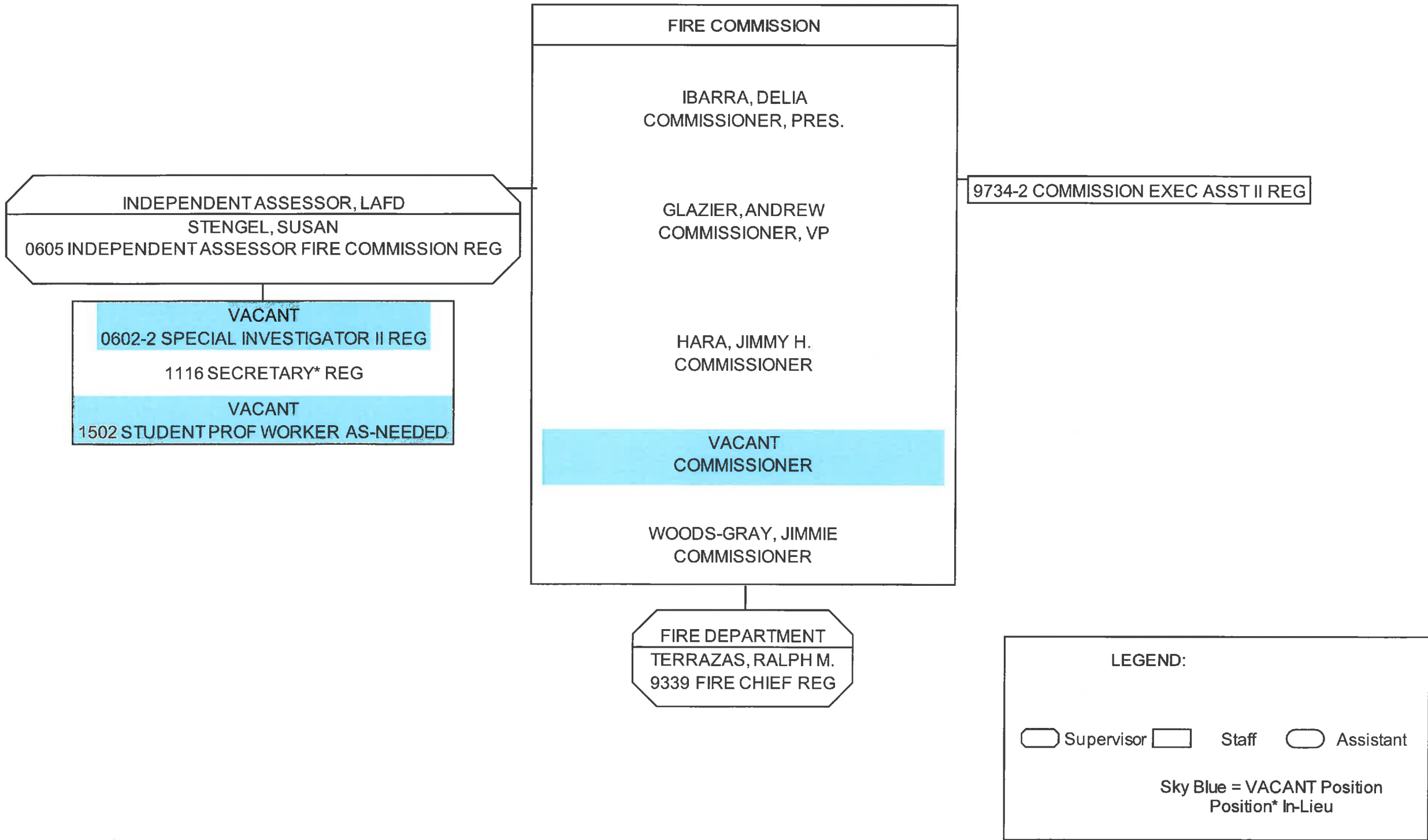
APPROVED BY:

  
\_\_\_\_\_  
FIRE CHIEF

APPROVED BY:

\_\_\_\_\_  
BOARD OF FIRE COMMISSIONERS

# BOARD OF FIRE COMMISSIONERS



AG3850 General Administration & Support  
AF3804 Operations Control and Dispatch  
AF3808 Emergency Ambulance Services



AH3803 Fire Suppression  
AH3808 Emergency Medical Services  
AQ3850 General Administration and Support

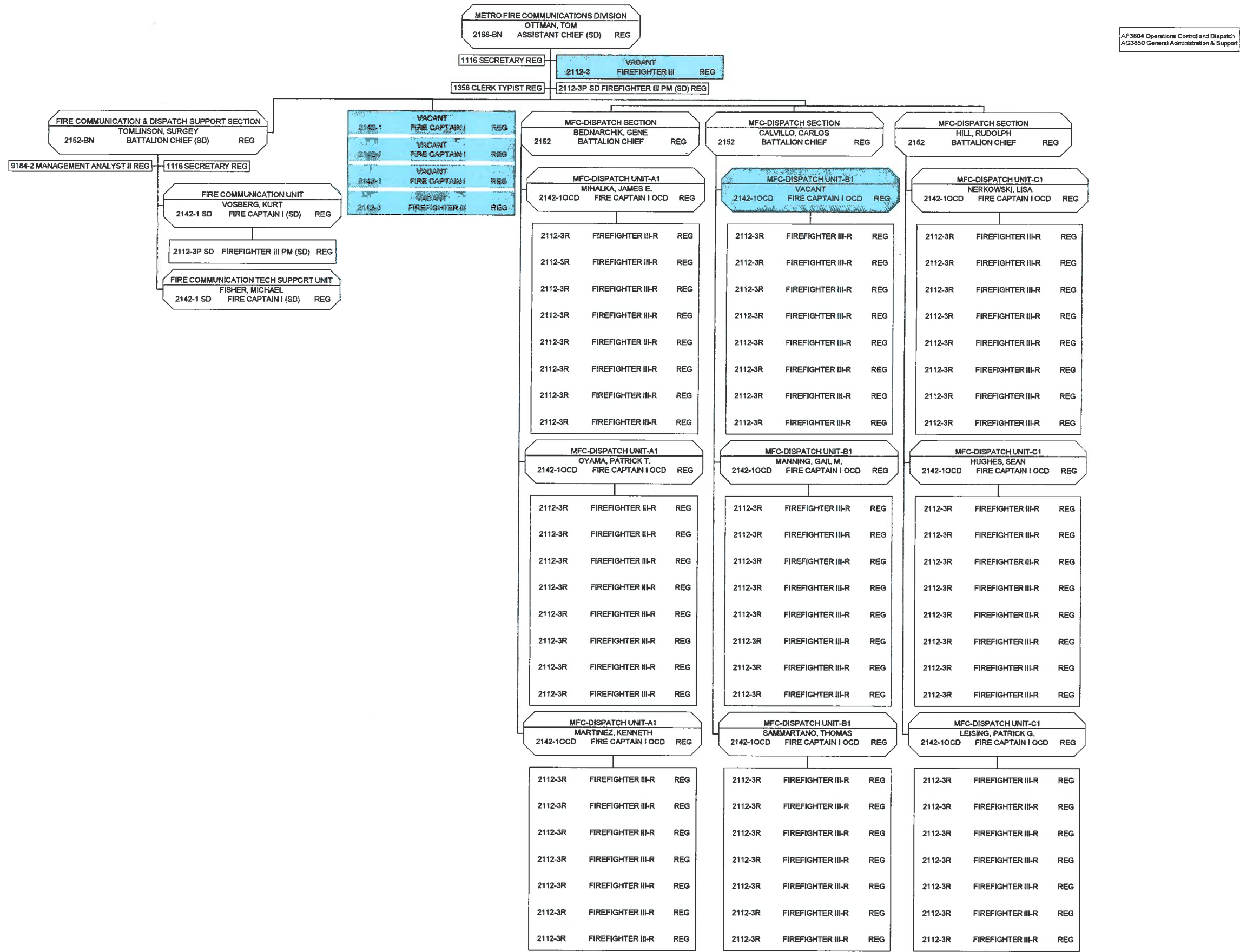


AG3850 General Administration & Support  
AC3801 Arson Investigation & Counter Terrorism



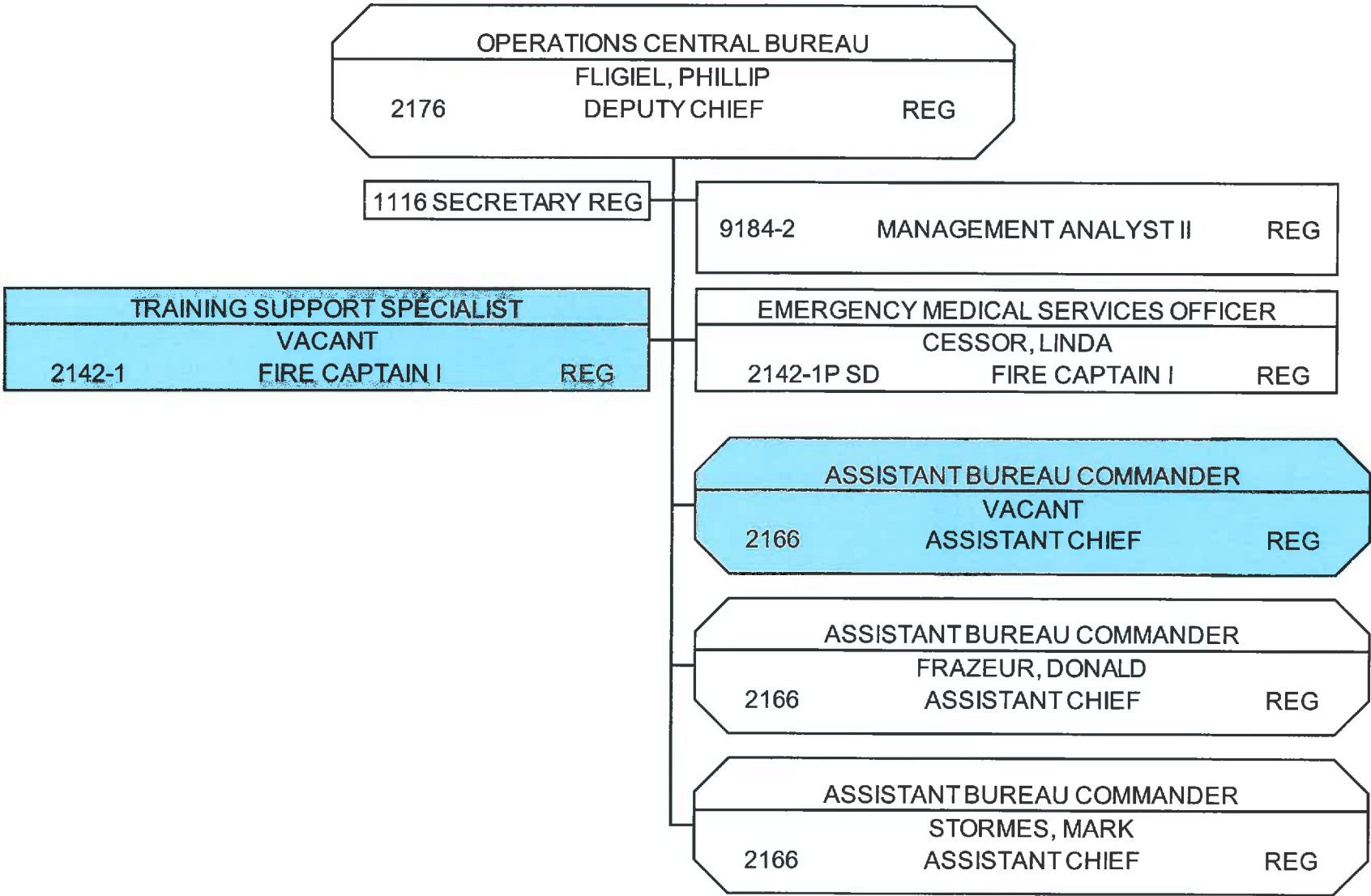


EMERGENCY OPERATIONS - METRO FIRE COMMUNICATIONS DIVISION



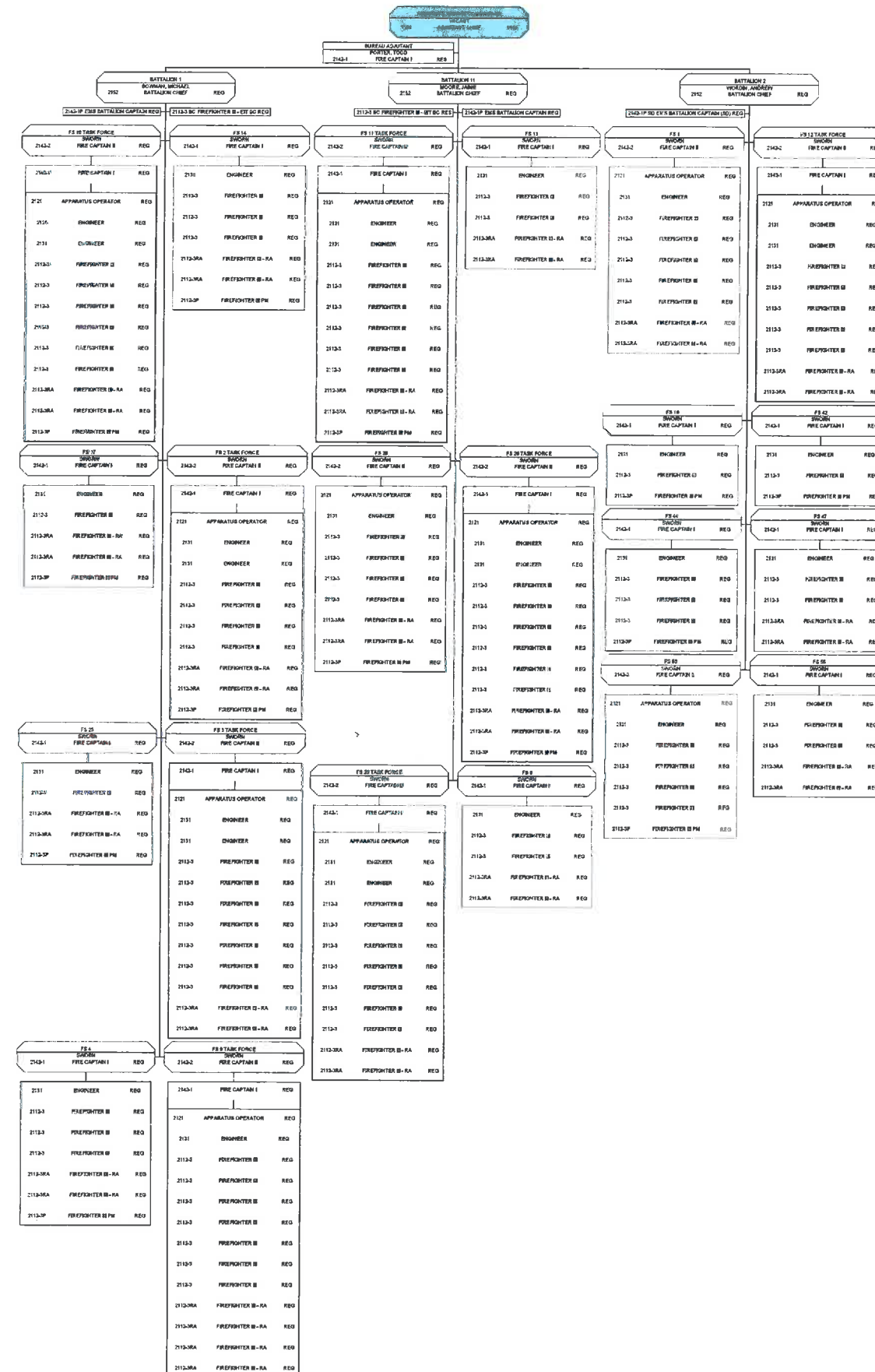
# OPERATIONS CENTRAL BUREAU

AH3803 Fire Suppression  
AH3808 Emergency Ambulance Services

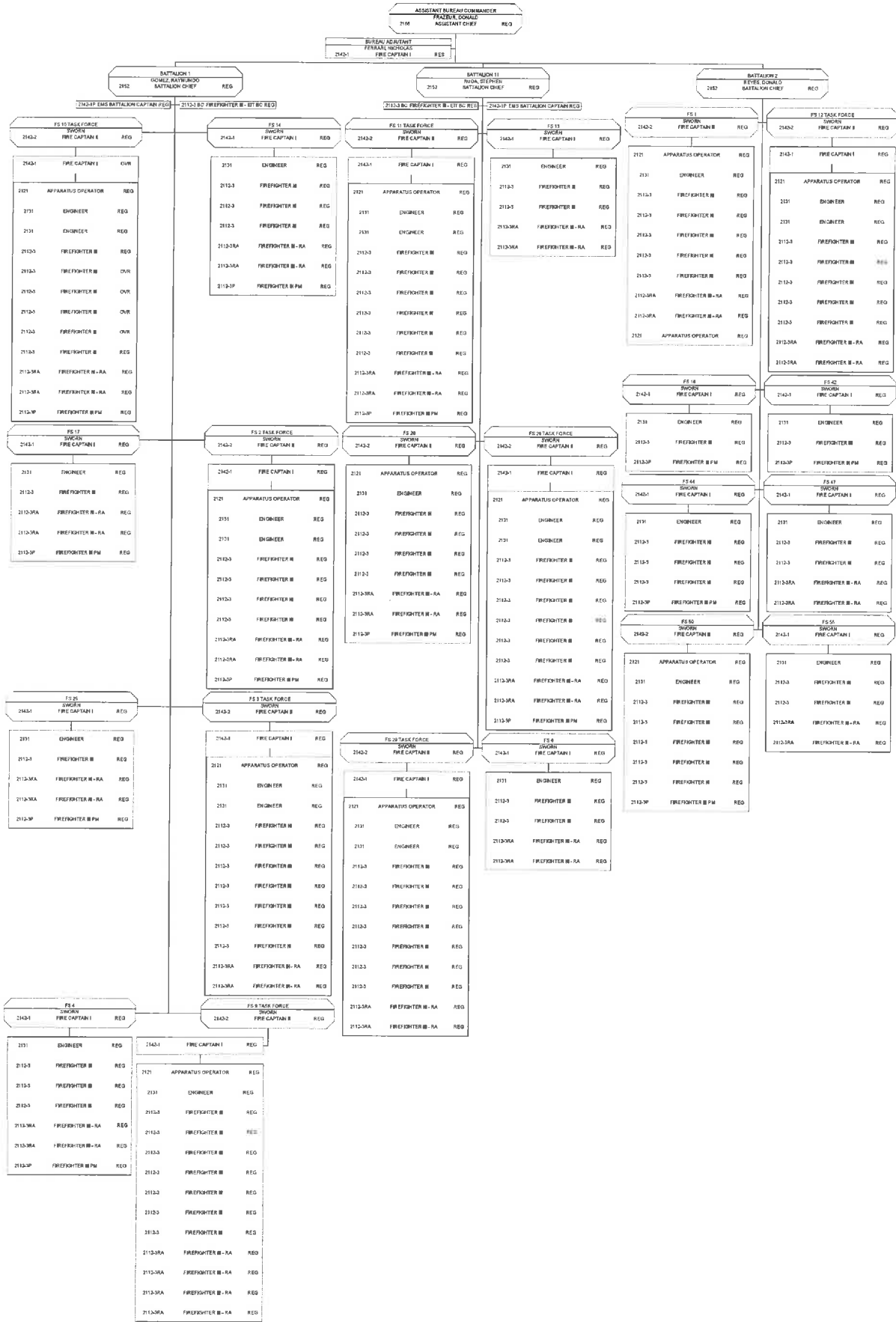




AHJ3603 Fire Suppression  
 AHJ3606 Emergency/Ambulance Services

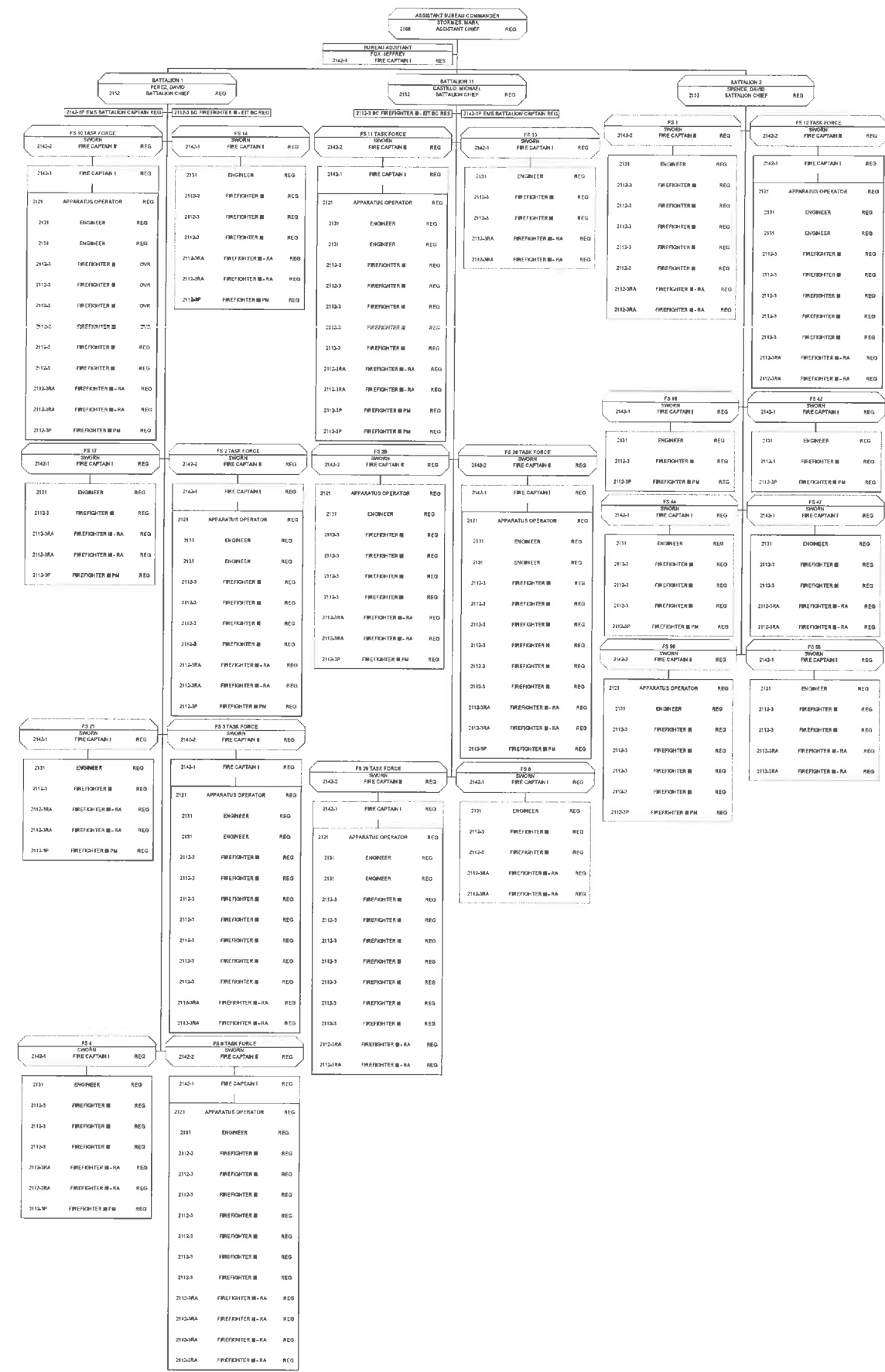


OPERATIONS CENTRAL BUREAU - SHIFT B



Adopted Fire Department Organization Chart - Fiscal Year 2015-2016

# OPERATIONS CENTRAL BUREAU - SHIFT C



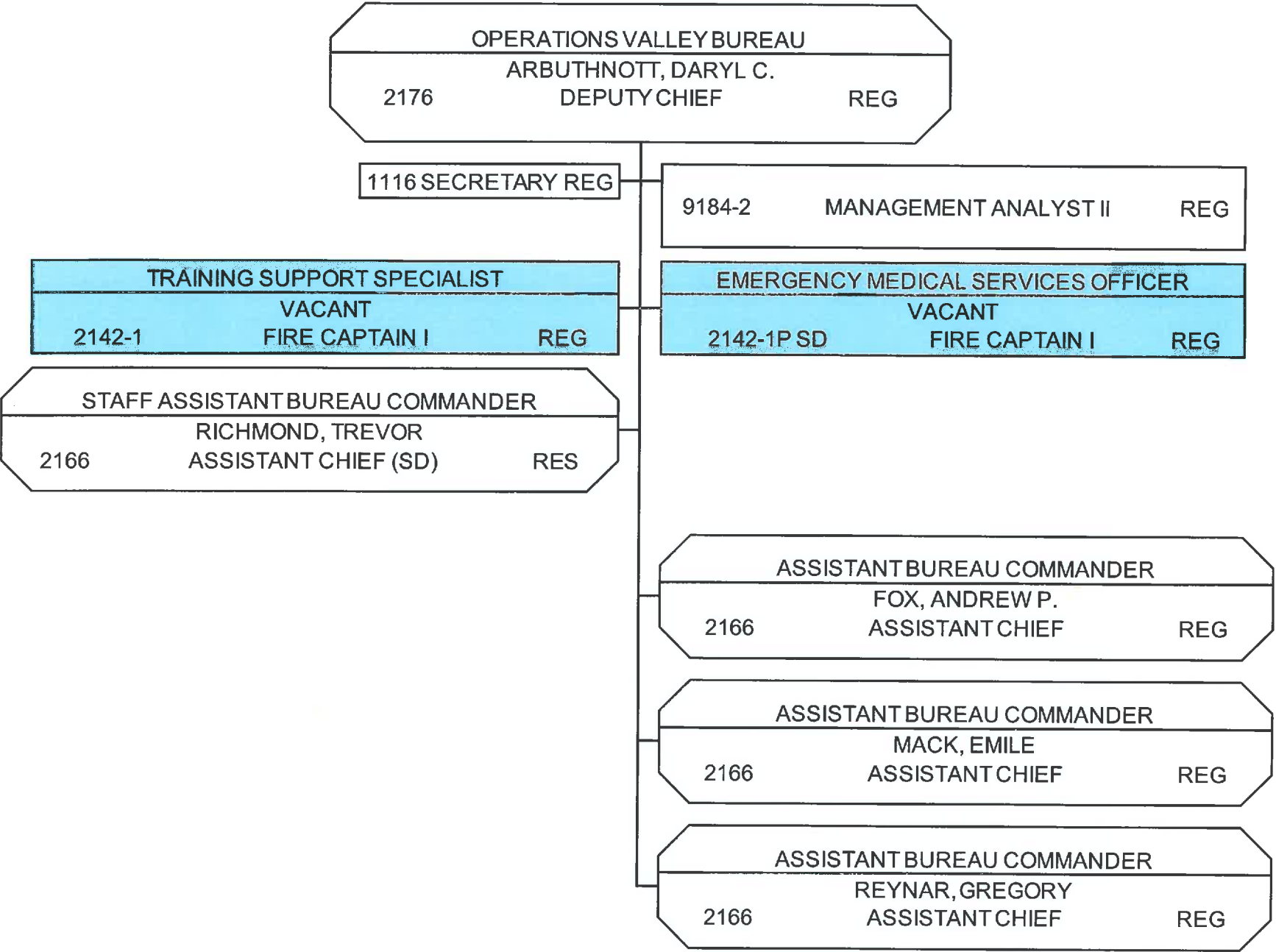
Adopted Fire Department Organization Chart - Fiscal Year 2015-2016

ANALYSIS BY SUPERFINDER  
ANALYSIS BY SUPERFINDER

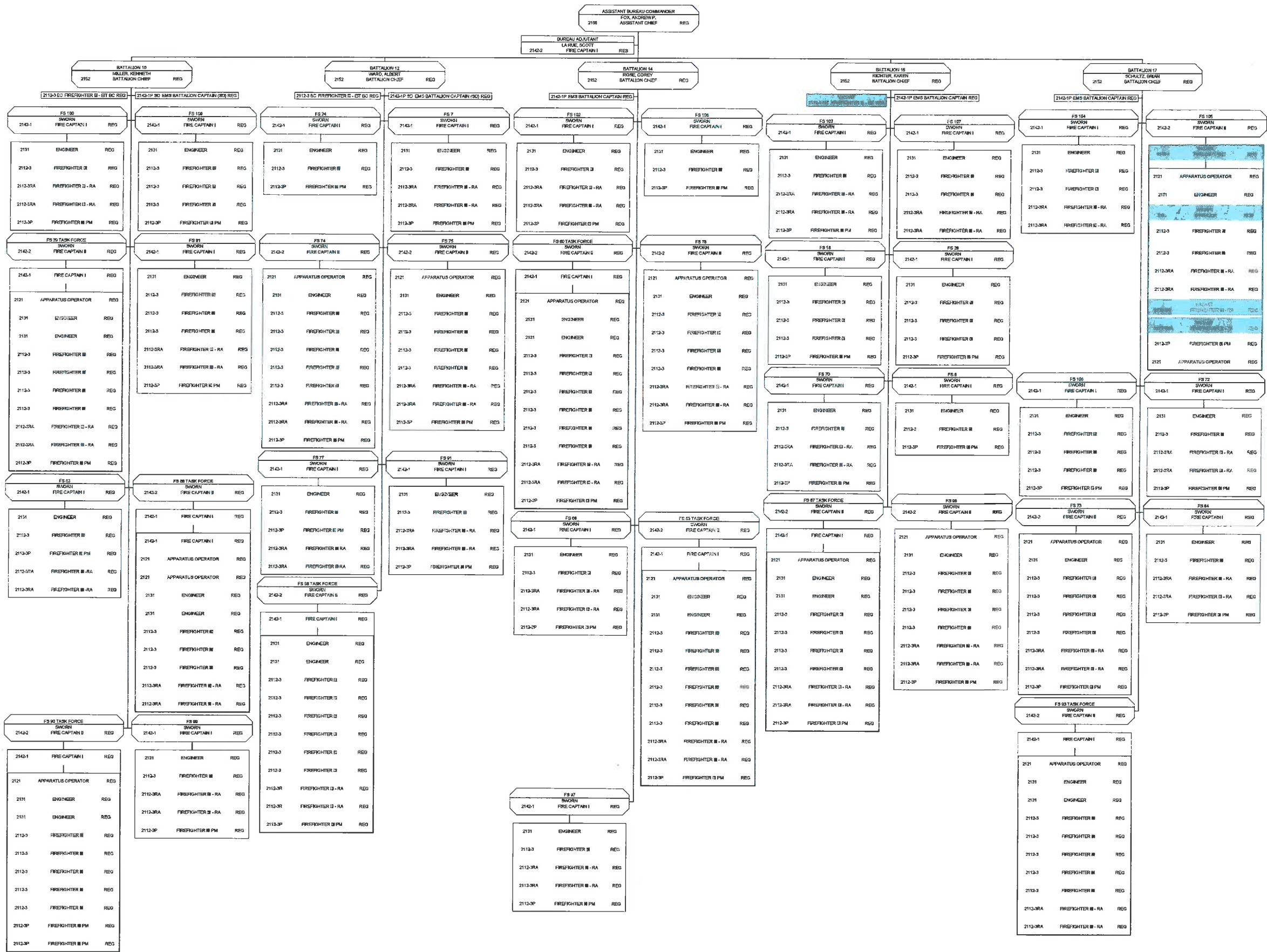


OPERATIONS VALLEY BUREAU

AH3803 Fire Suppression  
AH3808 Emergency Ambulance Services  
AG3850 General Administration and Support



# OPERATIONS VALLEY BUREAU - SHIFT A



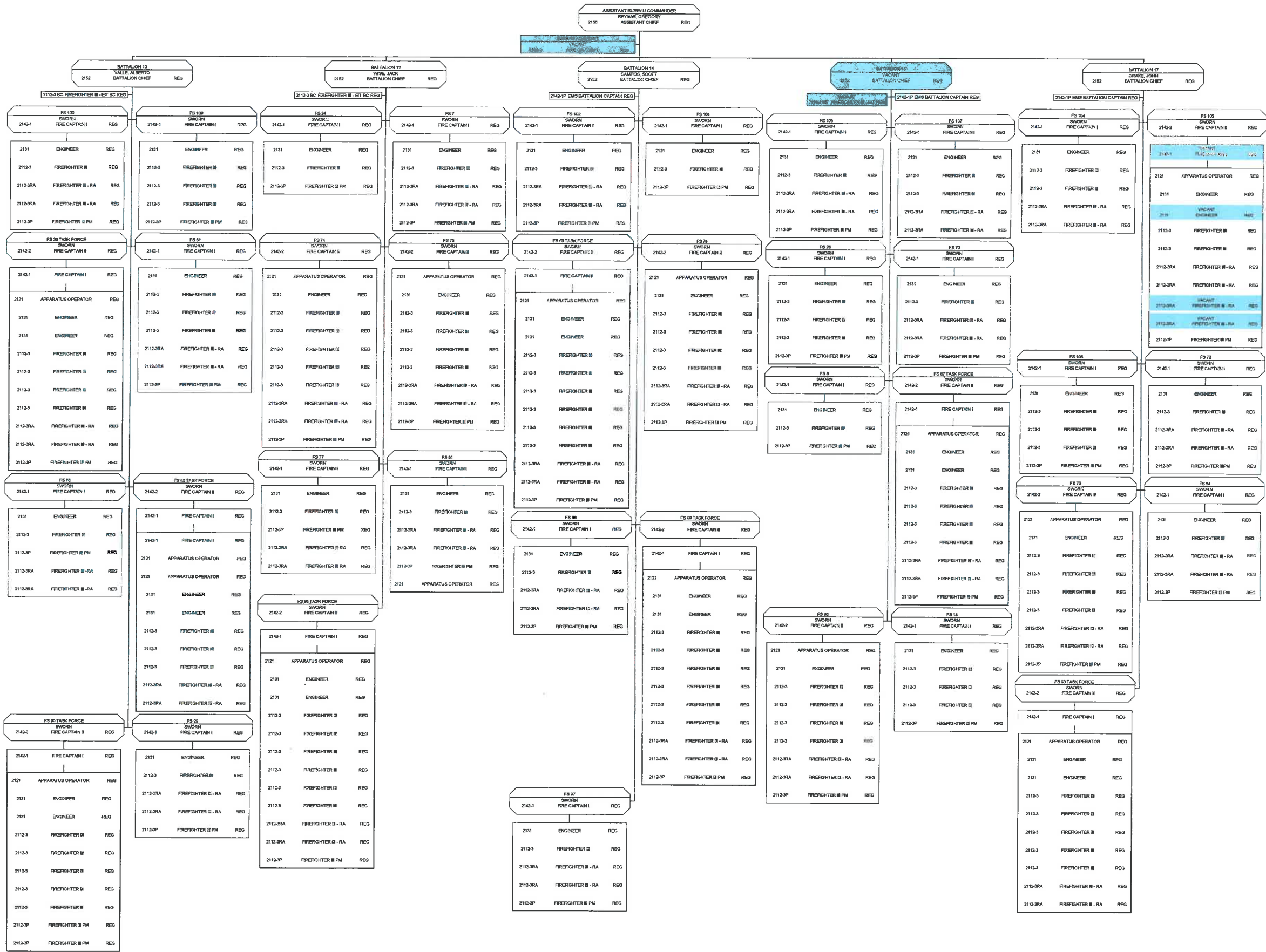
Adopted Fire Department Organization Chart - Fiscal Year 2015-2016



A1-0803 Fire Suppression A1-0806 Emergency Ambulance Services
--



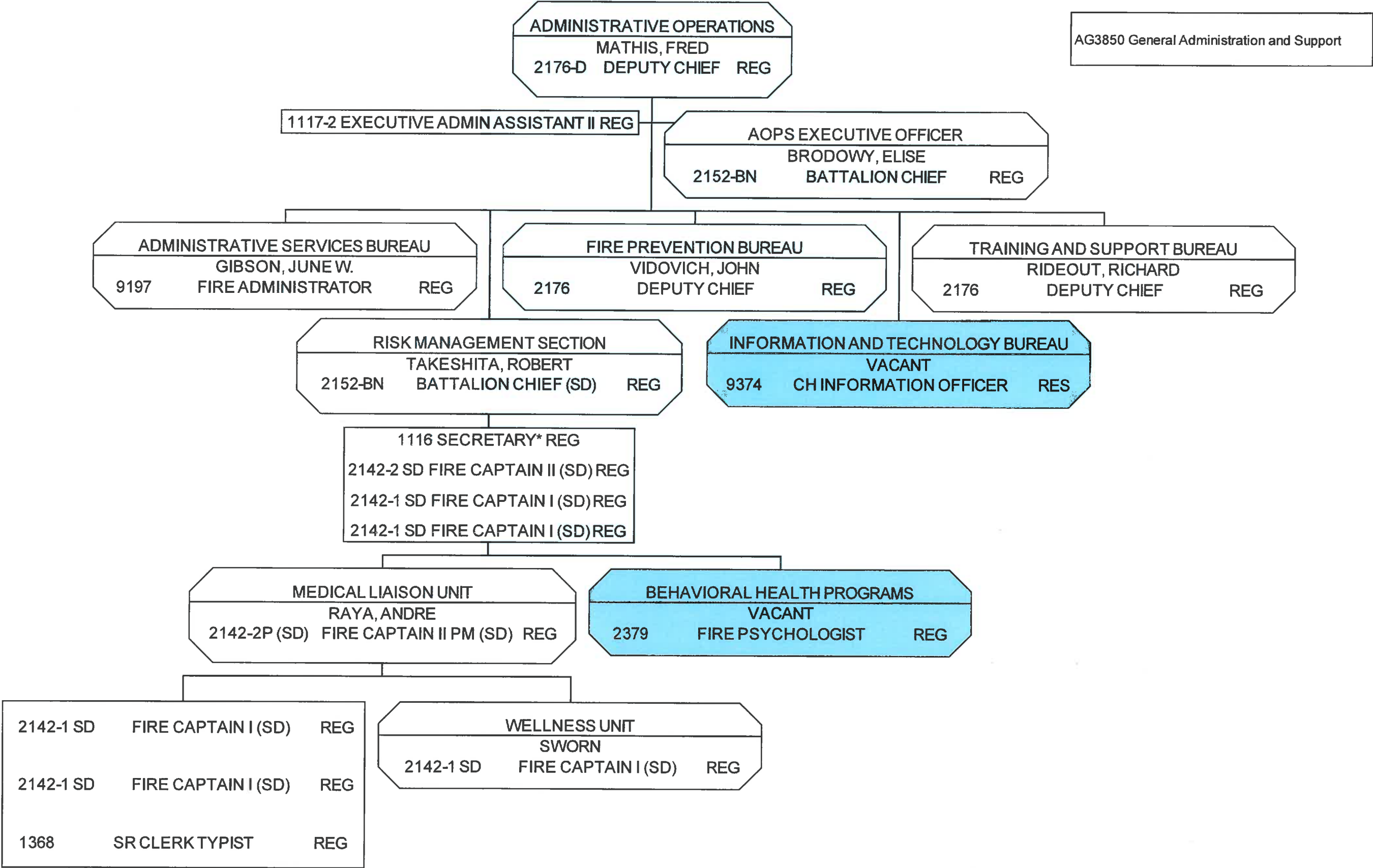
OPERATIONS VALLEY BUREAU - SHIFT C



A420853 I am Garry's mom  
A420854 I'm sorry about the situation



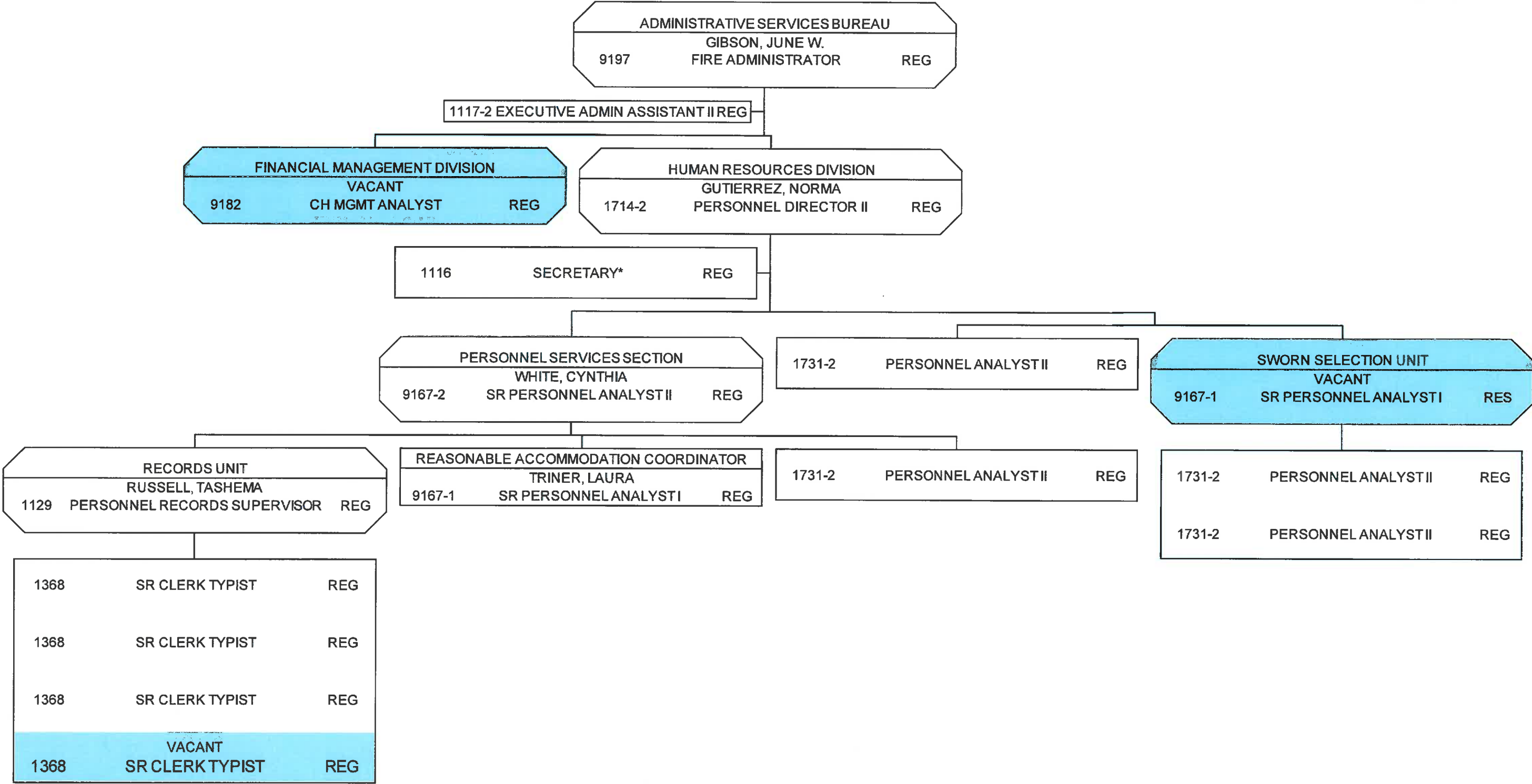
# FIRE DEPARTMENT - ADMINISTRATIVE OPERATIONS





ADMINISTRATIVE SERVICES BUREAU

AG3850 General Administration and Support



## AGG850 General Administration and Support



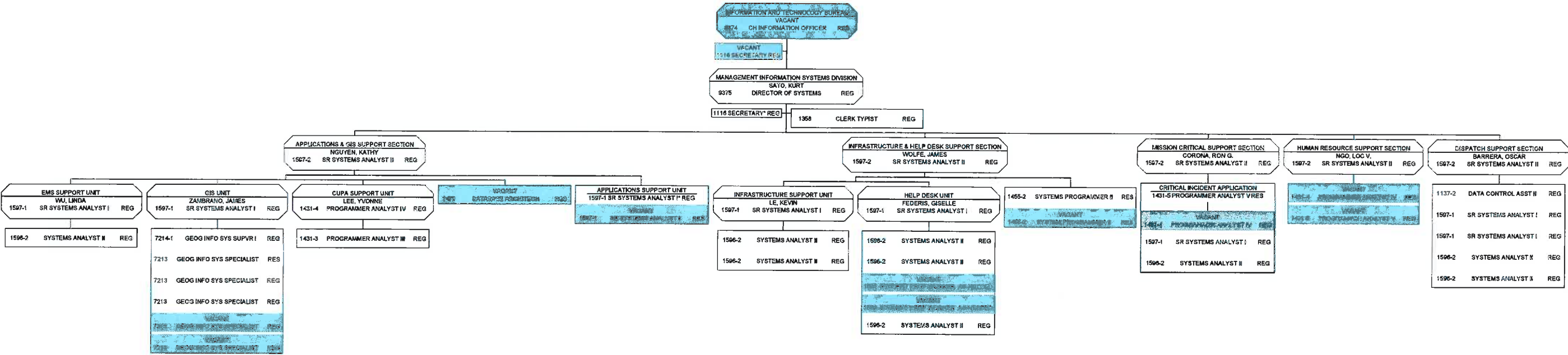


AF3234 Hardware Maintenance Enforcement  
AF3236 Fire Prevention  
AQ5959 General Administration and Support

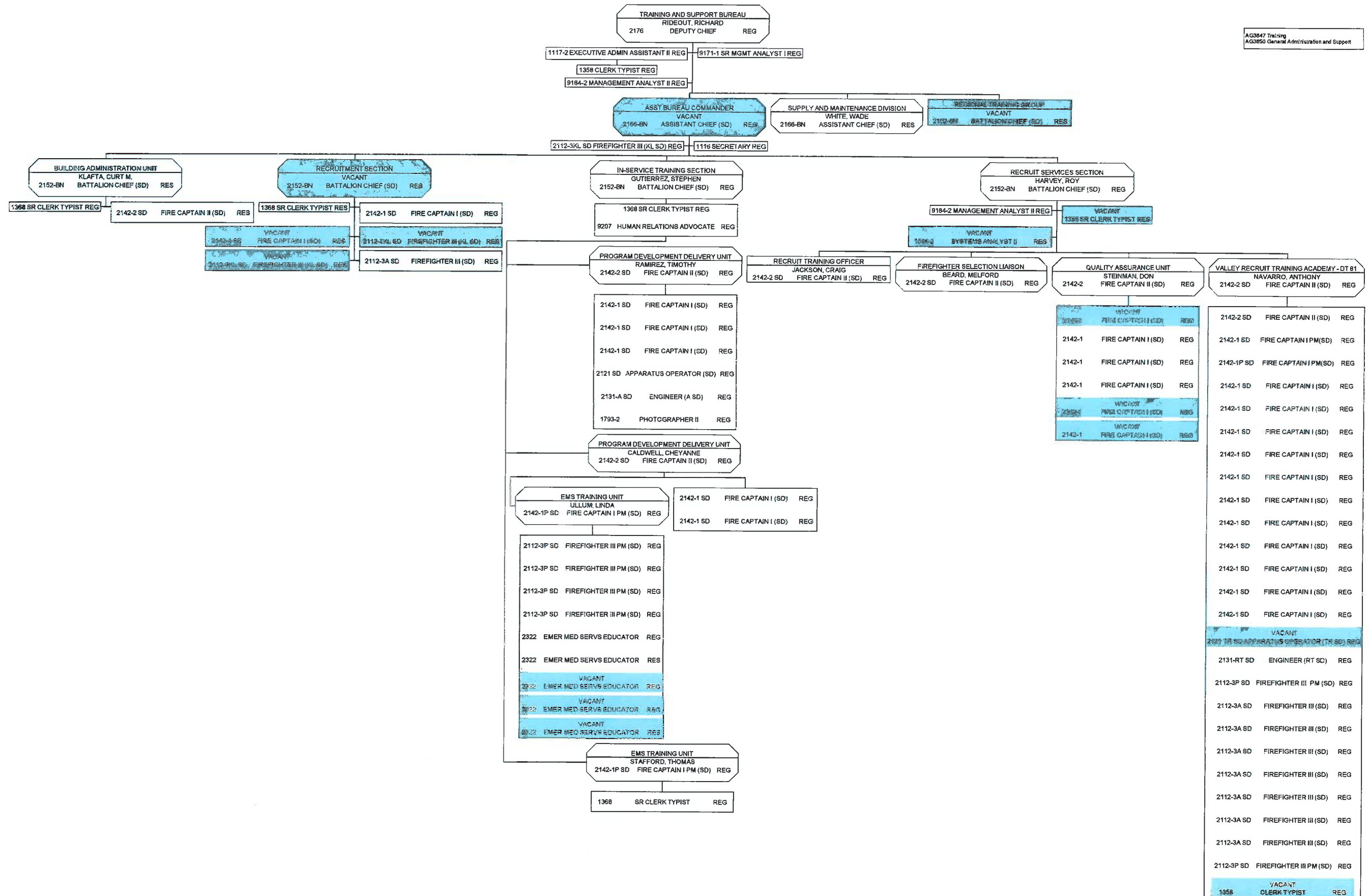


# INFORMATION AND TECHNOLOGY BUREAU

AG3849 Technology Support  
AG3850 General Administration and Support



AG3847 Training
AG3850 General Administration and Support



AG3848 Procurement, Maintenance and Repair  
AG3850 General Administration and Support

