



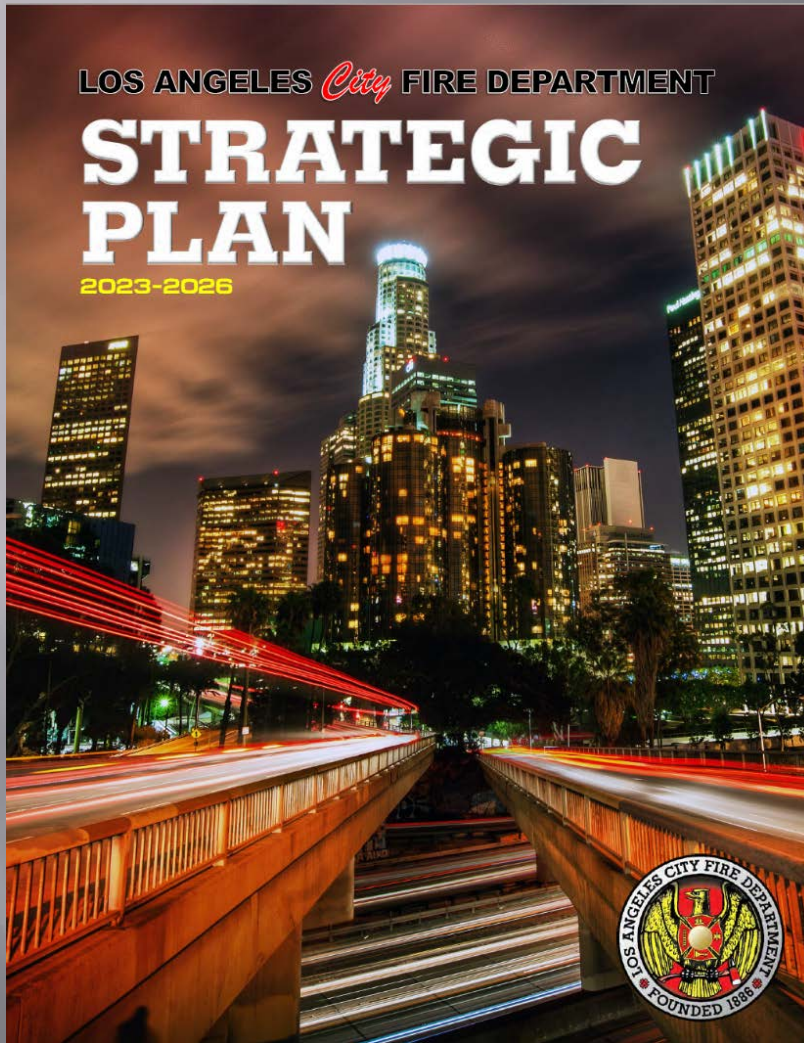
OPERATIONS SOUTH BUREAU

2023 Quarterly Report

OSB Vision

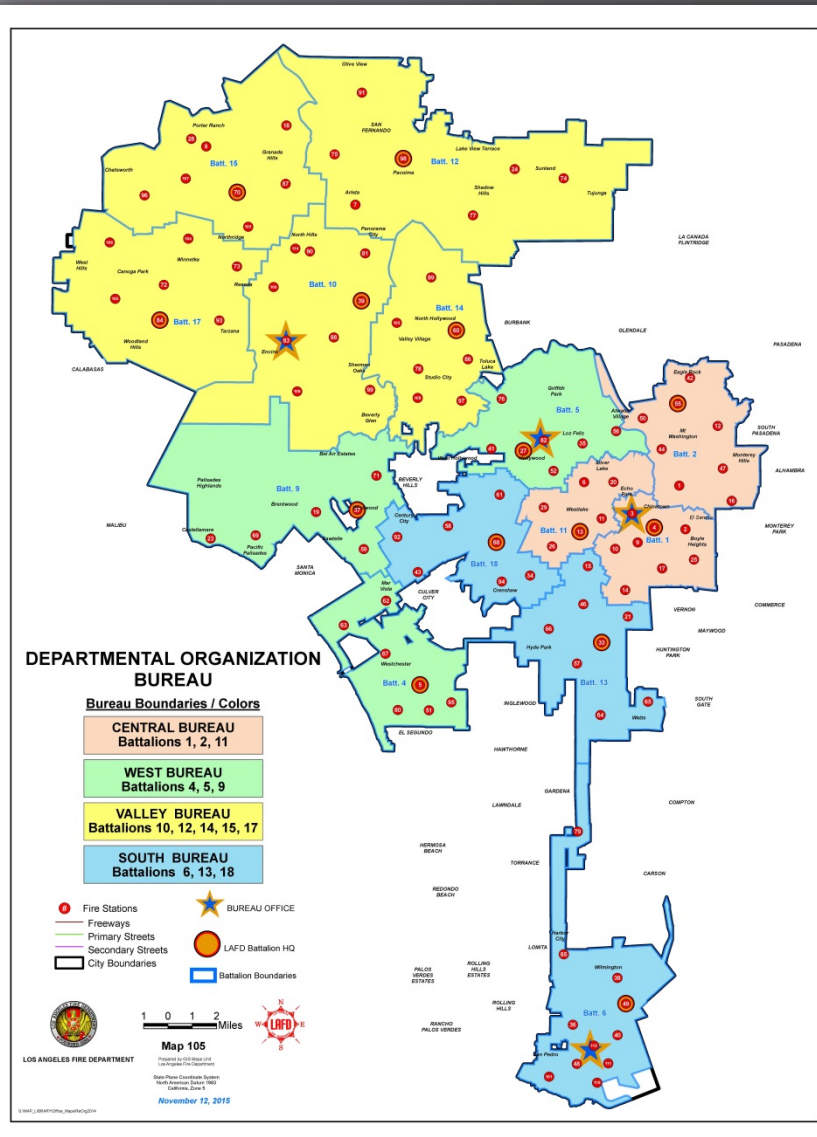
Operations South Bureau will be a geographic bureau leader and innovator in the delivery of excellent all-hazard emergency services, enhancing community resilience through collaborative engagement while supporting a safe, healthy, and diverse work environment.





- Goal 1: Deliver Exceptional Public Safety and Emergency Service
- Goal 2: Promote a Safe, Healthy, and Progressive Work Environment that Effectively Manages Personal and Organizational Risk
- Goal 3: Commit to an Organizational Culture that Embraces Diversity, Equity, and Inclusion
- Goal 4: Improve Collaboration, Participative Leadership, and Responsible Performance Management
- Goal 5: Foster Personal Growth, Professional Development, and Organizational Succession
- Goal 6: Explore, Implement, and Integrate Technological Innovations and Advancements
- Goal 7: Enhance Community Resilience, Disaster Recovery Capabilities, and Environmental Sustainability

Four-Bureau Structure



OSB

Battalions & Stations

Battalion 6

Fire Stations 36, 38, 40,
48, 49, 79, 85, 101, 110,
111, 112



Battalion 13

Fire Stations 15, 21, 33,
46, 57, 64, 65, 66



Battalion 18

Fire Stations 34, 43, 58,
61, 68, 92, 94





Council Districts & Members



Council District 4
Nithya Raman
Fire Station 61
68



Council District 5
Katy Yaroslavsky
Fire Stations 43, 58, 92
61



Council District 8
Marqueece Harris-Dawson
Fire Stations 57, 64, 66
15, 33, 34, 46, 65, 94



Council District 9
Curren D. Price, Jr.
Fire Stations 15, 21, 33, 46
57, 64, 65, 66



Council District 10
Heather Hutt
Fire Station 34, 68, 94
58



Council District 15
Tim McOsker
Fire Stations 36, 38, 40, 48, 49, 65, 79,
85, 101, 110, 111, 112
64

Communities Served

- ▣ Century City
- ▣ Crenshaw
- ▣ Baldwin Hills
- ▣ Fairfax
- ▣ Harbor City
- ▣ Harbor Gateway
- ▣ Leimert Park
- ▣ Mid-City
- ▣ San Pedro
- ▣ Palms
- ▣ Pico/Robertson
- ▣ South Los Angeles
- ▣ Hyde Park
- ▣ Watts
- ▣ Wilmington



Neighborhood Councils

30 Neighborhood Councils

Battalion 6

- Central San Pedro
- Coastal San Pedro
- Harbor City
- Harbor Gateway North
- Harbor Gateway South
- Northwest San Pedro
- Wilmington

Battalion 13

- Central Alameda
- CANNDU
- Empowerment Congress Central Area
- Empowerment Congress North Area
- Empowerment Congress Southeast Area
- Empowerment Congress Southwest Area
- Park Mesa Heights
- South Central
- Voices of 90037
- Watts
- Zapata-King

Battalion 18

- Empowerment Congress West Area
- Greater Wilshire
- Mid City
- Mid City West
- Olympic Park
- P.I.C.O.
- Palms
- South Robertson
- United Neighborhoods
- West Adams
- Westside
- Westwood

Challenges

- ▣ Active Bureau
 - Preparing for large events and gatherings
 - ▣ OSB has frequent large-scale events
 - ▣ Professional Sports teams, one College team which all have high attendance
 - ▣ 26 stations and Dive Program
 - Providing equal attention to all three battalions
- ▣ All sworn OSB members are special duty
 - No platoon duty members
 - On-call for significant events

Partnering with other Agencies



Developed strong relationships with our Area "A" partners and other agencies who neighbor OSB

Major Stakeholders



University of Southern California



Los Angeles Memorial Coliseum &
Bank of Montreal Stadium



Port of Los Angeles



The Grove/Farmers Market

University of Southern California

- ▣ California's oldest private research university
- ▣ Largest private employer in the City of Los Angeles
 - 25,000 employees
- ▣ 44,000 students
 - Undergraduate and graduate
- ▣ 308-acre campus



Port of Los Angeles

- ▣ Nation's #1 port in terms of container volume
 - Over 8 million TEUs per year
- ▣ 7,500 acres in size
 - 4,300 acres of land
 - 3,200 acres of water
 - 43 miles of waterfront
- ▣ 27 terminals
 - Container, automobile, liquid bulk, dry bulk, breakbulk, cruise



Bank of Montreal Stadium Los Angeles

- ▣ Home of the Los Angeles Football Club
 - Professional soccer franchise based in Los Angeles
- ▣ Successfully opened on April 18, 2018
- ▣ Hosting of sporting and concert events
- ▣ 25,000 seating capacity



The Grove/Farmers Market

The Grove



- 600,000 square foot retail and entertainment complex
- 18 million visitors annually

Farmers Market



- Over 100 vendors such as gourmet grocers, tourist shops, and eateries
- Los Angeles Historic Landmark
- In operation since 1934

Incident Types

- ▣ Battalion 6 (Harbor Area)
 - Cliff Rescues
 - Cruise Ship EMS Incidents
 - ▣ Multi-Casualty Incidents
 - Container Terminal Incidents
 - Marina Live-a-boards
 - Vessel Fires
 - Sinking Vessels
 - Wharf Fires
 - Airplane Collisions



Incident Types

- ▣ Battalion 13 (South Los Angeles)
 - LAFD's Busiest Battalion
 - ▣ In 2022, we had 86,636 incidents created in the Battalion, which resulted in 143,357 resources responding
 - ▣ Over 58,339 incidents in 2023, thus far, resulting in 95,778 resources responding
 - Structure Fires
 - EMS Incidents
 - Metro Blue Line Rail Incidents
 - Freeway Incidents



Incident Types

- ▣ Battalion 18 (South & West Los Angeles)
- ▣ Variety of Terrain
 - High Rise
 - Structure Fires
 - Brush Fires
 - Light Rail
 - Freeway Incidents



Special Resources

- ▣ Advanced Provider Response Unit 58, 65
- ▣ Fireboats & Dive Program- FS 49, 110, 111, 112
- ▣ Urban Search & Rescue (US&R) - FS 85
- ▣ HAZMAT - FS 21, 48
- ▣ Fast Response 64
- ▣ Therapeutic Van 94, 40 (Soon to be TV 36)



Goal 1: Deliver Exceptional Public Safety and Emergency Service

- ▣ Develop comprehensive plans for complex incident management
 - Area Command
 - Planned Events
 - Spontaneous Events
 - Green Cell Training for newly promoted Battalion Chiefs
 - Port Protector exercise
 - Active Shooter Drills: USC, Cedar Sinai Medical Center, Fox Studios
 - Harbor evacuation drill