

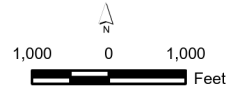
FIRE/EMS RESPONSE

Los Angeles City Boundary

Ventura County Boundary

LOS ANGELES CITY FIRE DEPARTMENT

AUTOMATIC AID: LFD & VNC FREEWAY INCIDENTS



LFD to VNC

Resource(s):

- 1. Engine or Light Force
- 1. ALS

VNC to LFD

Resource(s):

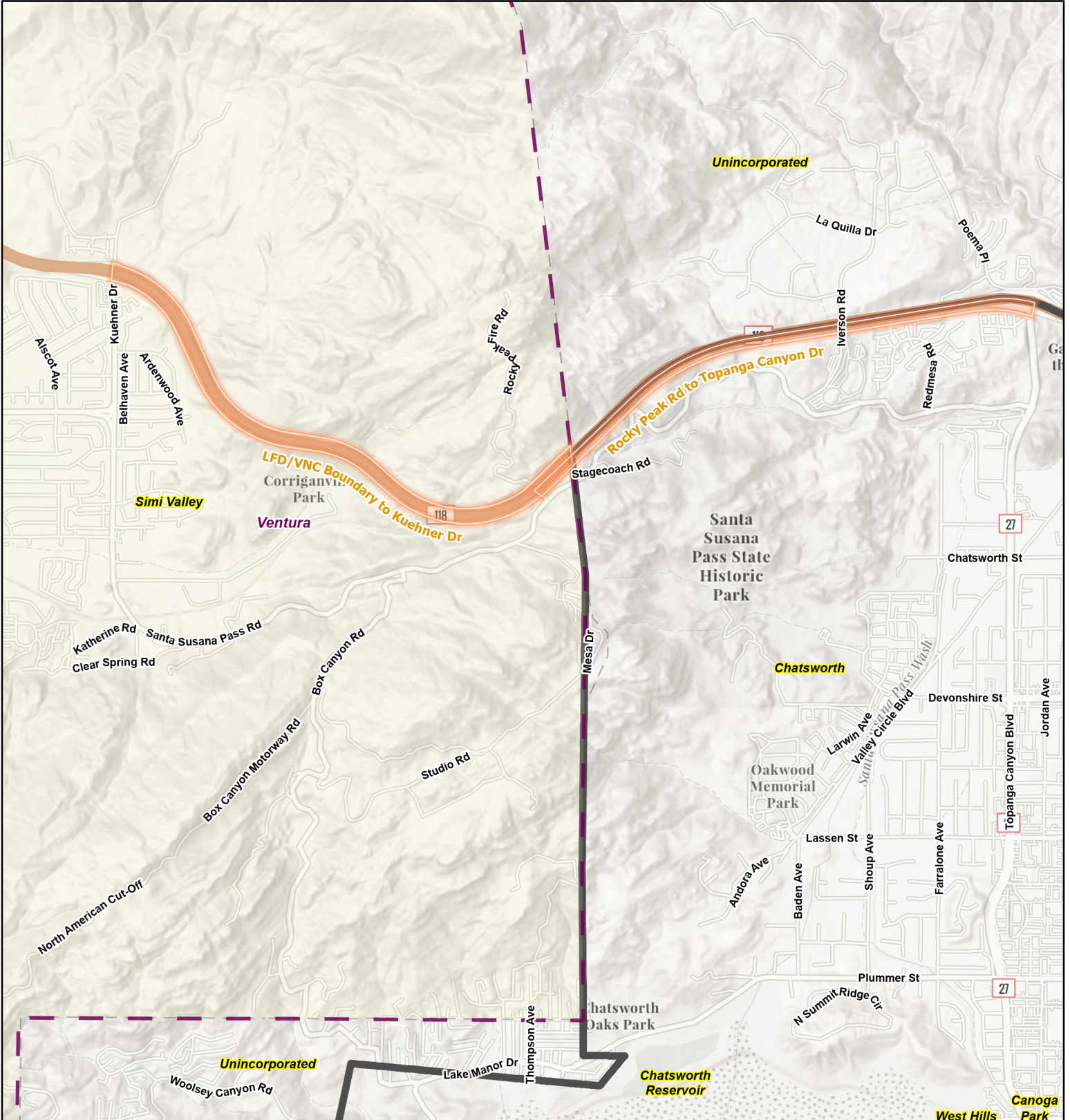
Fire & EMS -

Traffic Accidents/Technical Rescue -

1. Engine or Light Force

1. Engine

1. Light Force



LFD/VNC

AUTOMATIC AID AGREEMENT MATRIX

<u>VENTURA COUNTY FIRE DEPARTMENT</u>	
RESOURCES FROM VNC TO LFD	RESOURCES FROM LFD TO VNC
<p style="text-align: center;"><u>STRUCTURE FIRE</u></p> <p><u>Assignment</u></p> <ul style="list-style-type: none"> • 4 Engines • 2 Trucks • 2 Battalion Chiefs (Maps #'S) 	<p style="text-align: center;"><u>STRUCTURE FIRE</u></p> <p><u>Initial Assignment</u></p> <ul style="list-style-type: none"> • 1 Task Force • 2 Engines • 1 Battalion Chief <p><u>Additional Companies requested.</u></p> <ul style="list-style-type: none"> • 1 Task Force • 1 Battalion Chiefs (Maps #1)
<p style="text-align: center;"><u>OTHER FIRE INCIDENTS</u></p> <p><u>Assignment</u></p> <ul style="list-style-type: none"> • One Engine <p><u>Locations</u></p> <ul style="list-style-type: none"> • E/B on the CA-118 between Rocky Peak Road and Topanga Canyon Blvd. • Santa Susana Pass Rd. from Ventura County/LA City boundary to Topanga Canyon Rd. • Southern Pacific Railroad Tunnel • Eastern section of Lilac Lane from Walsh Road on the north to Mesa Dr. on the south. 	<p style="text-align: center;"><u>OTHER FIRE INCIDENTS</u></p> <p><u>Assignment</u></p> <ul style="list-style-type: none"> • One Engine <p><u>Locations</u></p> <ul style="list-style-type: none"> • Santa Susana Pass Rd. from City/County Boundary to Rocky Peak Rd. • Southern Pacific Railroad tunnel to Corriganville Park
<u>ADDITIONAL RESOURCES APPROVED BY VNC DUTY CHIEF</u>	<u>ADDITIONAL RESOURCES APPROVED BY LFD DEPUTY DEPARTMENT COMMANDER</u>

<u>VENTURA COUNTY FIRE DEPARTMENT</u>	
RESOURCES FROM VNC TO LFD	RESOURCES FROM LFD TO VNC
<p><u>EMS INCIDENTS</u></p> <p><u>Assignment</u></p> <ul style="list-style-type: none"> One ALS or BLS Engine <p><u>Locations</u></p> <ul style="list-style-type: none"> E/B on the CA-118 between Rocky Peak Road and Topanga Canyon Blvd. Santa Susana Pass Rd. from Ventura County/LA City boundary to Topanga Canyon Rd. Southern Pacific Railroad Tunnel Eastern section of Lilac Lane from Walsh Road on the north to Mesa Dr. on the south. 	<p><u>EMS INCIDENTS</u></p> <p><u>Assignment</u></p> <ul style="list-style-type: none"> One Engine or Light Force One ALS Ambulance <p><u>Locations</u></p> <ul style="list-style-type: none"> Santa Susana Pass Rd. from City/County Boundary to Rocky Peak Rd. Southern Pacific Railroad tunnel to Corriganville Park
<p><u>FREEWAYS</u></p> <p><u>FIRE/EMS AND TECHNICAL INCIDENTS</u></p> <p><u>Assignment</u></p> <ul style="list-style-type: none"> One Engine or Truck <p><u>Locations</u></p> <ul style="list-style-type: none"> E/B on the CA-118 between Rocky Peak Road and Topanga Canyon Blvd. <p><u>Technical/Physical Rescue Assignment</u></p> <ul style="list-style-type: none"> <u>One Engine</u> <u>One Truck</u> 	<p><u>FREEWAYS</u></p> <p><u>FIRE/EMS AND TECHNICAL INCIDENTS</u></p> <p><u>Assignment</u></p> <ul style="list-style-type: none"> One Engine One ALS Ambulance <p><u>Locations</u></p> <ul style="list-style-type: none"> W/B on the CA-118 between Rocky Peak Road and Kuehner Drive. <p><u>Technical/Physical Rescue Assignment</u></p> <ul style="list-style-type: none"> <u>One Light Force</u> <u>One ALS Ambulance</u> <u>One Battalion Chief</u>

<u>VENTURA COUNTY FIRE DEPARTMENT</u>	
RESOURCES FROM VNC TO LFD	RESOURCES FROM LFD TO VNC
<p><u>SPECIALIZED INCIDENTS</u></p> <ul style="list-style-type: none"> • <u>Hazmat</u> • <u>USAR</u> <p><u>Approved by VNC Duty Chief through Ventura County Fire Communications Center</u></p>	<p><u>SPECIALIZED INCIDENTS</u></p> <ul style="list-style-type: none"> • <u>Hazmat</u> • <u>USAR</u> • <u>Heavy Rescue</u> <p><u>Approved by LFD Deputy Department Commander through Metro Fire Communications</u></p>
<p><u>VEGETATION FIRE INCIDENTS</u></p> <ul style="list-style-type: none"> • 5 Engines • 1 Water Tender • 2 Battalion Chiefs • 1 Helicopter (Type 1 or 2 with Fly Crew) • 2 CAL FIRE Crews • 1 Dozer • 1 Investigator <p><u>VEGETATION FIRES ARE COVERED IN THE SUSANA ANNUAL OPERATING PLAN</u></p>	<p><u>VEGETATION FIRE INCIDENTS</u></p> <ul style="list-style-type: none"> • 6 Engines • 1 Light Force • 2 Battalion Chiefs • 2 Helicopters (Type II) • 1 Helicopter Coordinator (HELCO) • 1 Dozer <p><u>VEGETATION FIRES ARE COVERED IN THE SUSANA ANNUAL OPEATING PLAN</u></p>