

LOS ANGELES FIRE DEPARTMENT



RALPH M. TERRAZAS
FIRE CHIEF

January 2, 2019

BOARD OF FIRE COMMISSIONERS
FILE NO. 19-003

TO: Board of Fire Commissioners

FROM: *RMT* Ralph M. Terrazas, Fire Chief

SUBJECT: AUTOMATIC AID AGREEMENT BETWEEN THE FIRE DEPARTMENTS
OF THE TRI-CITIES AND THE LOS ANGELES FIRE DEPARTMENT

FINAL ACTION:	<input type="checkbox"/> Approved	<input type="checkbox"/> Approved w/Corrections	<input type="checkbox"/> Withdrawn
	<input type="checkbox"/> Denied	<input type="checkbox"/> Received & Filed	<input type="checkbox"/> Other

SUMMARY

The Los Angeles Fire Department (LAFD) maintains thirteen automatic aid agreements with neighboring fire agencies. These automatic aid agreements exist to enhance emergency response services in those areas of each city that are not easily accessed by existing fire stations. When an emergency arises, the neighboring city may have response resources closer to the incident than the city in which the incident occurs. To maintain a high level of service to the citizens within these areas, the LAFD enters into automatic aid agreements which allow the city with the closest resources to dispatch those resources.

This is the agreement by and between the Fire Departments of the cities of Burbank, Glendale and Pasadena (also known as the Tri-Cities) and the Los Angeles Fire Department. This agreement was previously renewed in May 2003. Since then changes to each of the cities involved have occurred, such as increased population, new or relocated resources and greater incident challenges. The areas providing and receiving augmented services are in the northeast area of Los Angeles and the northeast portion of the San Fernando Valley.

RECOMMENDATIONS

That the Board:

1. Approve the Automatic Aid Agreement between the LAFD and the Tri-Cities Fire Departments for a period of three (3) years.
2. Authorize the approval to forward the attached agreement to Fire Chief Ralph Terrazas for his signature indicating approval to enter into agreement with the Tri-Cities Fire Departments.

FISCAL IMPACT

The terms of this agreement are intended to achieve as much cost neutrality as possible.

DISCUSSION

Services between the agencies will include twenty-three geographical areas in need of augmented services. The LAFD will provide augmented fire and EMS response to the Tri-Cities when requested, along with swift water, technical rescue and helicopter support to six of the twenty-three geographical areas. In exchange for those services, the Tri-Cities will provide augmented fire and EMS response when requested to seventeen areas of Los Angeles, along with wildland, swift water and technical rescue services. The benefit of this agreement will be decreased response times, providing a higher level of service to citizens of the municipalities involved.

CONCLUSION

This agreement will be for a term of three years and is anticipated to be effective January 2019 with an expiration date in January 1, 2022. During Calendar Year 2021, the parties will meet to assess the equality of services provided and received by each of the cities. If needed, adjustment to the amount of resources dispatched or the areas served will take effect in a new agreement, effective January 2022.

Board report prepared by Rick Crawford, Captain II, Administration Bureau Planning Section.

Attachments

AUTOMATIC AID AGREEMENT

LOS ANGELES FIRE DEPARTMENT & BURBANK, GLENDALE & PASADENA FIRE DEPARTMENTS



DECEMBER 31, 2018

**AUTOMATIC AID AGREEMENT FOR EXCHANGE OF FIRE PROTECTION,
SPECIALIZED, RESCUE AND EMERGENCY MEDICAL SERVICES BETWEEN THE
CITY OF LOS ANGELES AND THE CITIES OF: BURBANK, GLENDALE AND
PASADENA (THE TRI-CITIES)**

The purpose of this Automatic Aid agreement is to outline the procedures for carrying out an Automatic Aid response between the City of Los Angeles Fire Department (LFD) and the Cities of Burbank (BRK), Glendale (GLN) and Pasadena (PAS) (hereinafter collectively referred to as the Tri-Cities). This agreement replaces the previous agreement between the Cities of Los Angeles and the Tri-Cities dated May 2003.

W I T N E S S E T H

WHEREAS, the parties to this Agreement provide fire protection, medical services, specialized and rescue services within their respective jurisdictional limits; and

WHEREAS, fire and rescue resources for the Cities of Burbank, Glendale and Pasadena are dispatched through a central dispatch center known as Verdugo; and

WHEREAS, it is in the best interest of the Tri-Cities and LFD to provide the most expeditious response to suppress fires and render other emergency assistance; and

WHEREAS, each party is desirous of providing to the other a reasonable and reciprocal exchange of Emergency Services on a day-to-day basis.

NOW, THEREFORE, in consideration of these mutual covenants, the parties hereto agree as follows:

1. Revisions

This Letter of Agreement may be revised or amended at any time by mutual agreement of the Fire Chiefs of GLN, BRK, PAS and LFD. All amendments to this Agreement shall be in writing and signed by the persons authorized to bind the parties thereto.

It is agreed that substantial reductions or modifications of services by any of the agencies shall be cause for reconsideration of the Agreement.

2. Term

This Agreement, once executed by all parties hereto, shall commence on **February 1, 2019** and shall remain operative and effective until **January 31, 2022**. An annual review shall take place at or about the start of each new Fiscal Year to update the helicopter rates and/or any operational components. Parties shall meet on or about **April 1, 2021** to begin review and revision meetings. Any of the parties may terminate the Agreement at any time by giving written notice to the other parties at least thirty (30) days prior to the date of withdrawal.

3. Mutual Benefits

The Tri-Cities and the LFD intend that this Agreement will provide mutual benefits to all parties. The Fire Chiefs of the Tri-Cities and LFD are hereby authorized to identify and revise as they deem necessary any designated areas or types of response periodically as may be dictated by changing conditions and the requirements of mutual benefits to all parties.

4. Incident Command

In those instances where the assisting Department arrives before the jurisdictional Department, the assisting Department will take the necessary action dictated by the situation. However, it is assumed that the jurisdictional Department will arrive shortly after the arrival of that assisting Department. Overall command of the incident will be assumed by the jurisdictional Department upon its arrival at the scene. The assisting Department's personnel will remain under the command of the highest-ranking officer of the assisting Fire Department at the incident, who will become the Agency Representative (AREP). The resources of the assisting Department will be released from the scene as soon as practical by the jurisdictional Fire Department.

When it is deemed appropriate, the AREP may enter into Unified Command with the jurisdictional Department's Incident Commander. It is understood that such a decision may require approval from an Agency Administrator of the assisting and/or jurisdictional Department.

A common and agreed upon communications plan shall be established and utilized by all resources and Incident Commanders.

5. Commitment of Resources

It is mutually understood and agreed that this Agreement does not relieve either party from the necessity and obligation of using its own resources for furnishing fire and rescue service within any part of its own jurisdiction, and that the assisting party's response to a request for aid will be dependent upon the existing emergency conditions within its own jurisdiction and the status of its resources.

6. Methods of Requesting Aid

All requests for aid shall be via the respective dispatch center. Persons assigned to the dispatch center for all Departments are authorized to send and receive such requests as per their respective operational procedures. Verdugo will use either a designated VHF radio channel (V-Fire 21) or telephone line to contact the LFD's Metropolitan Fire Communications Center (MFC). MFC will use either a designated VHF radio channel (V-Fire 21) or telephone line to contact the Verdugo dispatch center.

7. Intent of Agreement

The intent of this Agreement is to provide the agency in need with a more efficient and/or effective initial response to an emergency incident. The agreed upon resources should only be utilized until the agency having responsibility is able to relieve the assisting agency with their own resources and/or obtain the appropriate emergency resources, not to exceed a 12-hour period of time. If the agreed upon resources are not available, the assisting agency need not respond.

8. Fire Incident Reporting

Each agency shall be responsible for obtaining needed information to complete fire reports for incidents within their respective jurisdiction. Assisting units shall contact jurisdictional units to provide appropriate information for completion of fire reports.

9. Training

Joint training exercises will be conducted periodically upon agreement by the parties (minimum of one per year). These training exercises shall be coordinated with LFD and the Tri-Cities Battalion Commanders.

10. Services by Los Angeles Fire Department

LFD agrees to provide a designated fire, ems and/or technical rescue response, as jointly agreed upon by the LFD and the Fire Chiefs of the Tri-Cities and LFD, upon request by the Tri-Cities to designated areas located within the jurisdiction of the Tri-Cities.

11. Dispatch by Los Angeles Fire Department

Upon receipt by Los Angeles of an alarm within a designated area located within the jurisdiction of Los Angeles, LFD, as the jurisdictional Department, will dispatch its nearest available and appropriately designated fire response to that alarm and also notify the Verdugo fire dispatcher who will, in turn, dispatch the agreed-upon Tri-Cities response.

12. Services by the Tri-Cities

The Tri-Cities agrees to provide a designated fire, ems and/or technical rescue response, as jointly agreed upon by the Fire Chiefs of the Tri-Cities and LFD, upon request by LFD to designated areas located within the jurisdiction of Los Angeles.

13. Dispatch by the Tri-Cities

Upon receipt by the Tri-Cities of an alarm within a designated area located within the jurisdiction of the Tri-Cities, the Tri-Cities (as the jurisdictional Department) will dispatch its nearest available and appropriately designated fire, ems, or rescue response to that alarm and also notify the LFD's Metropolitan Fire Communications' (MFC) dispatcher who will, in turn, dispatch the agreed-upon LFD response.

14. Amount and Type of Assistance

A. LFD to the TRI-CITIES

When requested by the Tri-Cities, the LFD agrees to provide the following resources to combat emergency incidents which are within the defined areas identified on the attached map. (Maps #1, #2 & #3) Additional resources may be authorized by the Fire Chief or Deputy Department Commander of the LFD upon request.

Structure Fire Response

- Up to and including a category "B" assignment (two light forces, three engines, one Battalion Chief, and (if necessary) an additional Chief Officer to serve as an agency representative.

Brush/Vegetation Fire Responses

- Up to and including one light force, six engines, one Battalion Chief, and an additional Chief Officer to serve as an agency representative.

AIR RESOURCES

- Upon verification of a working brush fire, the LFD will provide one LFD water dropping helicopter (when available), plus a separate LFD helicopter coordinator aircraft, (HELCO), for a period not to exceed 2 hours.
- Additional flight time, which will be requested through the Metropolitan Fire Dispatch Center or LFD Agency Representative will be billed as **Assistance By Hire (ABH)**, per helicopter, for the remainder of the incident, at the standard rate as determined at the beginning of the fiscal year by the LFD Revenue Management Section (LFD Aircraft Flight Hour Rate Sheet attached). Contracted Type-1 Helitankers are not included as an automatic aid resource, and would be considered a separate ABH resource at the designated rate (Helitanker Flight Hour Calculation sheet attached).
- Note: When the fire poses a risk of extension to the City of Los Angeles border, LFD Helicopters may remain attached to the incident longer than the prescribed time, or additional aircraft requested without charge, at the discretion of the LFD Agency Representative (and confirmed by the Deputy Department Commander).

Additional Helicopter Response

- Any other request by the Tri-Cities for helicopter response (e.g., working high-rise fires, swift water rescue incidents, hoist rescues and specialized medical transport) shall be approved by the LFD Deputy Department Commander (through the Metropolitan Fire Dispatch Center, or LFD Agency Representative), with financial arrangements documented (e.g., Assistance by Hire for duration of assignment).
- In these applications, helicopter response is defined as one Type-II mission-specific helicopter and a separate Helicopter Coordinator (HELCO) aircraft.
- The LFD agrees, at the request of the responding helicopter pilot or HELCO, to dispatch an engine company and/or the helicopter tender to establish a helispot for fueling helicopters and/or filling helicopter water tanks. Financial agreement will mirror time/use parameters as established for helicopter response.

Freeway Incidents: Fire, EMS, and Technical Rescue

Upon notification, LFD agrees to dispatch the following resources to reported fire and EMS incidents to supplement/assist Tri-City Engine Companies responding to the following freeway locations.

- One Engine northbound on Hwy 2 between the 134 Freeway and Mountain Ave (Map #4)

Heavy Rescue

When requested by the Tri-Cities, the LFD agrees to provide the Tri-Cities with a Heavy Rescue unit (if available) and one Battalion Chief to assist with vehicle extrications, confined space rescues and trench rescues.

Swift Water Rescue

Upon notification of a Swift Water incident within the identified areas in Burbank or Glendale, LFD will dispatch resources along the Burbank Western Flood Control Channel within the City of Burbank, per the direction of the jurisdictional Incident Commander; and along the confluence of the Verdugo Channel and L.A. River, within the City of Glendale (see attached map #5 and 5A). Resources responding will perform rescue procedures, as possible, as requested by the jurisdictional Incident Commander – under the same operational safety parameters in place within the City of Los Angeles. Responding resources will utilize the Verdugo Communication dispatch and command radio frequency designated at the time of dispatch. LFD resources will utilize an LFD tactical channel for communications within the Rescue Group.

The initial Swift Water dispatch by LFD into the Tri-Cities area will consist of:

- 1 Battalion Chief
- 1 Swift Water Rescue Team (if deployed and available) and
- 1 Light Force
- 1 Engine Company

B. THE TRI-CITIES to LFD

Structure Fire and EMS Response

Upon notification, the Tri-Cities agree to automatically dispatch the following resources to structure fires and EMS incidents within the areas defined below. Additional resources may be authorized by the Tri-Cities Operations Chief/Duty Chief upon request.

- West of San Fernando Road to the Los Angeles River between Doran Street and Los Feliz Drive (Map #6 and 6A)
- Los Angeles Equestrian Center in Griffith Park* (Map #7 and 7A)
- Lakeside Country Club and Golf Course (Map #8 and 8A)
- Villa Cabrini Development and adjacent areas (Map #9 and 9A)

Structure Responses

- One truck, two engines, one Battalion Chief. Additional resources may be authorized by the Tri-Cities "Duty Chief" and/or Operations Chief upon request.

EMS Responses

- One Engine with one ALS/BLS ambulance (minimum of one Advanced Life Support resource).

* Verdugo Dispatch will NOT dispatch Tri-Cities' EMS resources to BLS level responses within LFD's jurisdiction, except in the Los Angeles Equestrian Center.

Freeway Incidents: Fire, EMS, and Technical Rescue

Upon notification, the Tri-Cities agrees to automatically dispatch the following resources to reported fire and EMS incidents to supplement/assist LFD engine companies responding to the following freeway locations:

- One engine westbound on the CA-134 Freeway between the Glendale (CA-2) Freeway and Figueroa Boulevard. (Map #10)
- One engine southbound on the Golden State Freeway (I-5) between Western Avenue and Glendale Boulevard. (Map #11)
- One engine westbound on the I-210 Freeway between Lowell Avenue and Sunland Boulevard. (Map #12)
- One engine westbound on the CA-134 Freeway between the western edge of the Burbank/Los Angeles border and the intersection of the 101 and 134 Freeways. (Map #13)

- One engine eastbound on the CA-134 Freeway between the Buena Vista off ramp and the Interstate 5/134 merger. (Map #14)
- One engine eastbound on the CA-134 Freeway and southbound on the I-5 for any incident reported at the 5/134 interchange. (Map #15)

Additionally, the Tri-Cities agrees to automatically dispatch one truck company, one Battalion Commander and one rescue ambulance in addition to the one engine company normally dispatched to freeway incidents, to any reported physical rescue (persons trapped) on any of the freeways covered by this agreement.

Swift Water Incidents

Upon notification by LFD of a Swift Water Incident within the Los Angeles area (identified on attached maps), the Tri-Cities will automatically dispatch resources to the following locations:

- Los Angeles River at the confluence of the Burbank Western Channel (Map #16)
- Burbank western Channel at Cabrini (Map #17)
- North bank (river left) of the Los Angeles River from Victory Boulevard/Riverside Drive intersection, downstream to Los Feliz Drive (Map #18)

Resources responding will perform rescue procedures, as possible, as requested by the LFD Incident Commander utilizing an identified LFD radio channel.

The initial dispatch by the Tri-Cities into the area will consist of:

- 1 Battalion Chief
- 1 Engine Company
- 1 Urban Search & Rescue Apparatus
- 1 Truck Company

Brush Response

Upon notification, the Tri-Cities will dispatch five engine companies, one water tender, and a Battalion Commander to working brush fires into the following areas (as indicated on the attached map):

- W/B CA-134 Freeway between Figueroa and CA-2 Freeway. (Map #19)
- Griffith Park Area (Map #20)
- The Verdugo Mountain Area (Map #21)
- Mount Washington Area (Map #22)

15. Communications System

The Parties agree to share the use of communication systems, radios and radio frequencies for the execution of this Agreement. Sharing of the frequencies must be approved only by authorized personnel for each PARTY and documented in the Incident Action Plan IAP. The Communications plan will be reviewed annually and included in the recurrent joint training exercise.

When a Battalion Chief is assigned to the incident from the agency providing assistance (i.e. structure fire, swift water and freeway physical rescue), a common command channel (of the jurisdictional agency) shall be used by all assigned Officers, while each agency's line personnel may operate on their own tactical radio channel(s).

For incidents where there is **NO** Battalion Chief assigned from the agency providing assistance (i.e. auto and other fires on the freeway, EMS incidents, etc.) agencies' Company Commanders will communicate with each other using the tactical radio channel assigned to the agency having jurisdiction.

For brush responses where either assisting agency is requested or committed to a working operational role, the Incident Commander shall request a VHF Communications Plan through the respective dispatch center, (from the "Foothill Communications Plan"), which all agencies will move to from their initial dispatch communications plan. In all such circumstances, responding Chief Officers shall co-locate for validation of jurisdiction and agency role (Unified Command versus Assisting Agency).

16. No Third-Party Benefit

This Agreement shall not be construed as, or deemed to be, an Agreement for the benefit of anyone not a party hereto, and anyone who is not a party hereto shall not have a right of action hereunder for any cause whatsoever.

17. Consideration

No party furnishing aid pursuant to this Agreement shall be entitled to compensation for services rendered to the requesting agency, it being understood that the respective covenants contained in this Agreement shall constitute the sole consideration for such services.

18. Hold Harmless

It is mutually understood and agreed that the party requesting assistance shall not indemnify the party furnishing assistance as to liability or damage imposed by law upon the assisting party for any act or omission of the assisting party or its employees occurring in the performance of the services.

19. No Effect on Master Mutual Aid Agreement

It is mutually understood that this Agreement will in no way affect or have a bearing on the existing California Master Mutual Aid Agreement.

IN WITNESS WHEREOF, this Agreement has been executed on the _____ day of _____, 2019 and is effective and operative as to each of the parties as herein provided.

(Signature pages follow)

CITY OF LOS ANGELES

By _____
RALPH M. TERRAZAS
Fire Chief

Approved as to form and legality:

MICHAEL N. FEUER
City Attorney

By _____
Kimberly Miera
Deputy City Attorney

\\

CITY OF BURBANK

By _____
ERIC GARCIA
Fire Chief

By _____
EMILY GABEL-LUDDY
Mayor

Approved as to form:

By _____
AMY ALBANO
City Attorney

Approved as to content:

By _____
RON DAVIS
City Manager

Attest:

By _____
ZIZETTE MULLINS
City Clerk

CITY OF GLENDALE

By _____
BILL LYNCH
Interim Fire Chief

By _____
ZAREH SINANYAN
Mayor

Approved as to form:

Approved as to content:

By _____
MICHAEL J. GARCIA
City Attorney

By _____
YASMIN K. BEERS
City Manager

Attest:

By _____
ARDY KASSAKHIAN
City Clerk

CITY OF PASADENA

By _____
BERTRAL WASHINGTON
Fire Chief

By _____
TERRY TORNEK
Mayor

Approved as to form:

Approved as to content:

By _____
MICHELE BEAL BAGNERIS
City Attorney

By _____
STEVE MERMELL
City Manager

Attest:

By _____
MARK JOMSKY
City Clerk

BURBANK, GLENDALE & PASADENA FIRE DEPARTMENTS

TRI-CITIES AREA "C"

RESOURCES FROM TRI-CITIES TO LFD	RESOURCES FROM LFD TO TRI-CITIES
<p><u>ASSIGNMENT</u></p> <ul style="list-style-type: none"> • 1 Truck • 2 Engines • 1 Battalion Chief <p><u>LOCATIONS</u></p> <ul style="list-style-type: none"> • West of San Fernando Road to the LA River between Doran Street and Los Feliz Drive (Map #6 and #6A) • Los Angeles Equestrian Center in Griffith Park Map #7 and #7 • Lakeside Country Club and Golf Course (Map #8 and 8A) • Villa Cabrini Development and adjacent areas Map #9 and #9A 	<p><u>STRUCTURE FIRE INCIDENTS</u></p> <p>Assignment=Up to Category "B"</p> <ul style="list-style-type: none"> • 2 Light Forces • 3 Engines • 2 Battalion Chiefs (one as an AREP) (Maps #1, #2, & #3)
<p><u>BRUSH FIRE INCIDENTS</u></p> <ul style="list-style-type: none"> • 5 Engines • 1 Water Tender • 1 Battalion Chief <p><u>LOCATIONS</u></p> <ul style="list-style-type: none"> • W/B CA-134 between Figueroa and CA-2 (Map #19) • Griffith Park (Map #20) • Verdugo Mountain (Map #21) • Mount Washington (Map #22) 	<p><u>BRUSH FIRE INCIDENTS</u></p> <ul style="list-style-type: none"> • 1 Light Force • 6 Engines • 2 Battalion Chiefs (one as an AREP) <p><u>HELICOPTER RESPONSE</u></p> <p>One Helicopter + HELCO</p> <ul style="list-style-type: none"> • Brush Fires (WORKING)
	<p>Helicopter response Not to exceed 2 hrs. Additional time billed as ABH (Assistance by Hire)</p>
<p>This agreement covers Automatic Aid for the above listed Area "C" Departments. It does not include Brush Fire Responses to the Foothill Mutual Threat Zone.</p>	

BURBANK, GLENDALE & PASADENA FIRE DEPARTMENTS

TRI-CITIES AREA "C"

<u>RESOURCES FROM TRI-CITIES TO LFD</u>	<u>RESOURCES FROM LFD TO TRI-CITIES</u>
<p><u>FREEWAYS</u></p> <p><u>FIRE/EMS AND TECHNICAL INCIDENTS</u></p> <ul style="list-style-type: none"> One Engine W/B on the CA-134 between the CA-2 and Figueroa St. (Map #10) One Engine S/B on the I-5 between Western Avenue and Glendale Boulevard. (Map #11) One Engine W/B on the I-210 between Lowell and Sunland Boulevard. (Map #12) One Engine W/B on the CA-134 between the western edge of the Burbank/Los Angeles border and the intersection of the 101 and 134 Fwys. (Map #13) One Engine E/B on the CA-134 between the Buena Vista off ramp Interstate 5/134 merger. (Map #14) One Engine E/B on the CA-134 and S/B on the I-5 for any incident reported at the 5/134 interchange. <p><u>Technical/Physical Rescue Assignment</u> (In addition to the above Engine assigned)</p> <ul style="list-style-type: none"> One Truck One Rescue Ambulance (ALS) One Battalion Chief 	<p><u>FIRE/EMS AND TECHNICAL INCIDENTS</u></p> <ul style="list-style-type: none"> One Engine northbound on CA-2 between the CA-134 and Mountain Ave (Map #4) <p><u>VEHICLE EXTRICATIONS</u></p> <p><u>Assignment</u></p> <ul style="list-style-type: none"> Heavy Rescue Battalion Chief <p><u>CONFINED SPACE RESCUE</u></p> <p><u>Assignment</u></p> <ul style="list-style-type: none"> Heavy Rescue Battalion Chief <p><u>TRENCH RESCUE</u></p> <p><u>Assignment</u></p> <ul style="list-style-type: none"> Heavy Rescue Battalion Chief

BURBANK, GLENDALE & PASADENA FIRE DEPARTMENTS

**TRI-CITIES
AREA "C"**

RESOURCES FROM TRI-CITIES TO LFD	RESOURCES FROM LFD TO TRI-CITIES
<p align="center"><u>SWIFT WATER INCIDENTS</u></p> <p><u>Assignment</u></p> <ul style="list-style-type: none"> • 1 Engine Company • 1 Truck Company • 1 Urban Search & Rescue Apparatus • 1 Battalion Chief <p><u>Locations</u></p> <ul style="list-style-type: none"> • Los Angeles River at the confluence of the Burbank Western Channel Flood Control (Map #16) • Burbank Western Flood Control at Cabrini (Map #17) • North bank (river left) of the Los Angeles River from Victory Boulevard/Riverside Drive Intersection, downstream to Los Feliz Drive (Map #18) 	<p align="center"><u>SWIFT WATER INCIDENTS</u></p> <p><u>Assignment</u></p> <ul style="list-style-type: none"> • 1 Engine Company • 1 Light Force • 1 Swift Water Rescue Team (if deployed and available) • 1 Battalion Chief <p><u>Locations</u></p> <ul style="list-style-type: none"> • Entire length of the Burbank Western Flood Control Channel in the city of Burbank • Entire length of the Verdugo Channel within the City of Glendale (Map #5)
<p align="center"><u>NOTES</u></p> <ul style="list-style-type: none"> • Additional Resources may be authorized by the Fire Chief or Deputy Department Commander of the LAFD upon request. 	

LFD to GLN

Automatic Aid Map No. 1

FIRE RESPONSE

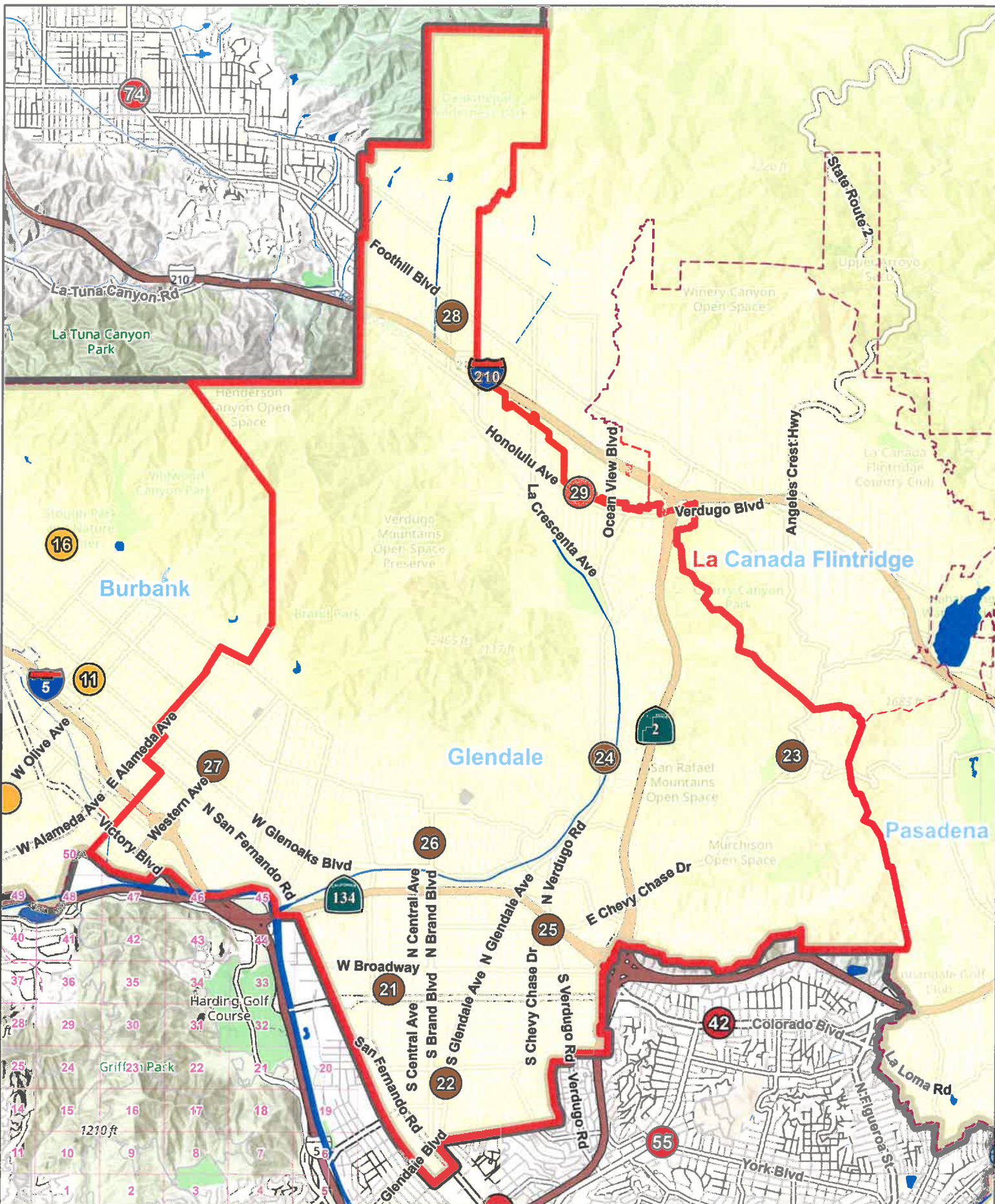
CITY OF GLENDALE

- # LAFD Fire Station
- # Glendale Fire Station
- # Burbank Fire Station

- Automatic Aid Boundaries
- Los Angeles City Boundaries
- Other City Boundaries

RESOURCES:

- Up to : 2. Light Forces
- 3. Engines
- 1. Battalion Chief



LFD to BRK

Automatic Aid Map No. 2

FIRE RESPONSE

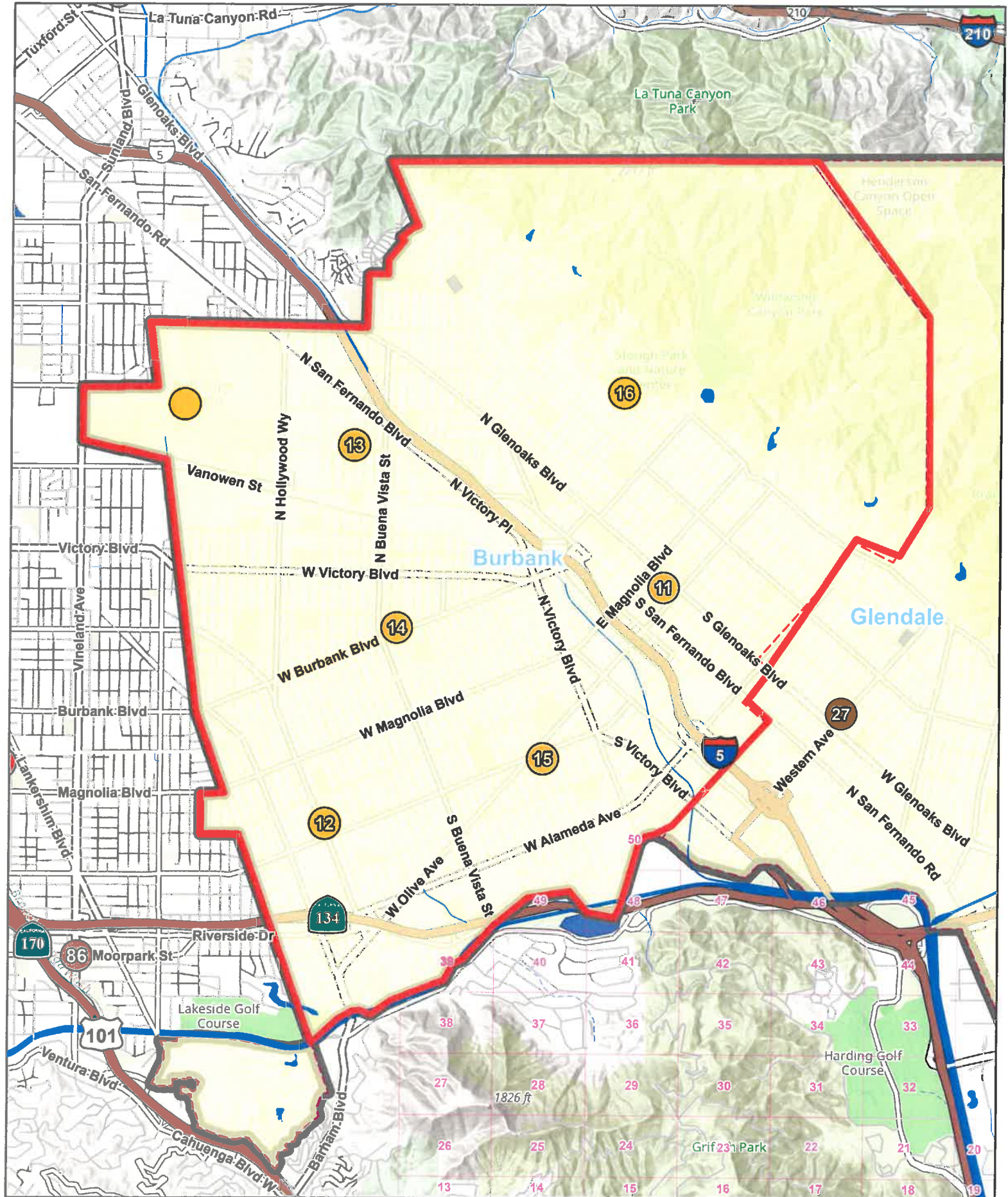
CITY OF BURBANK

- # LAFD Fire Station
- # Glendale Fire Station
- Burbank Fire Station

- Automatic Aid Boundaries
- Los Angeles City Boundaries
- Other City Boundaries

RESOURCES:

- Up to : 2. Light Forces
- 3. Engines
- 1. Battalion Chief

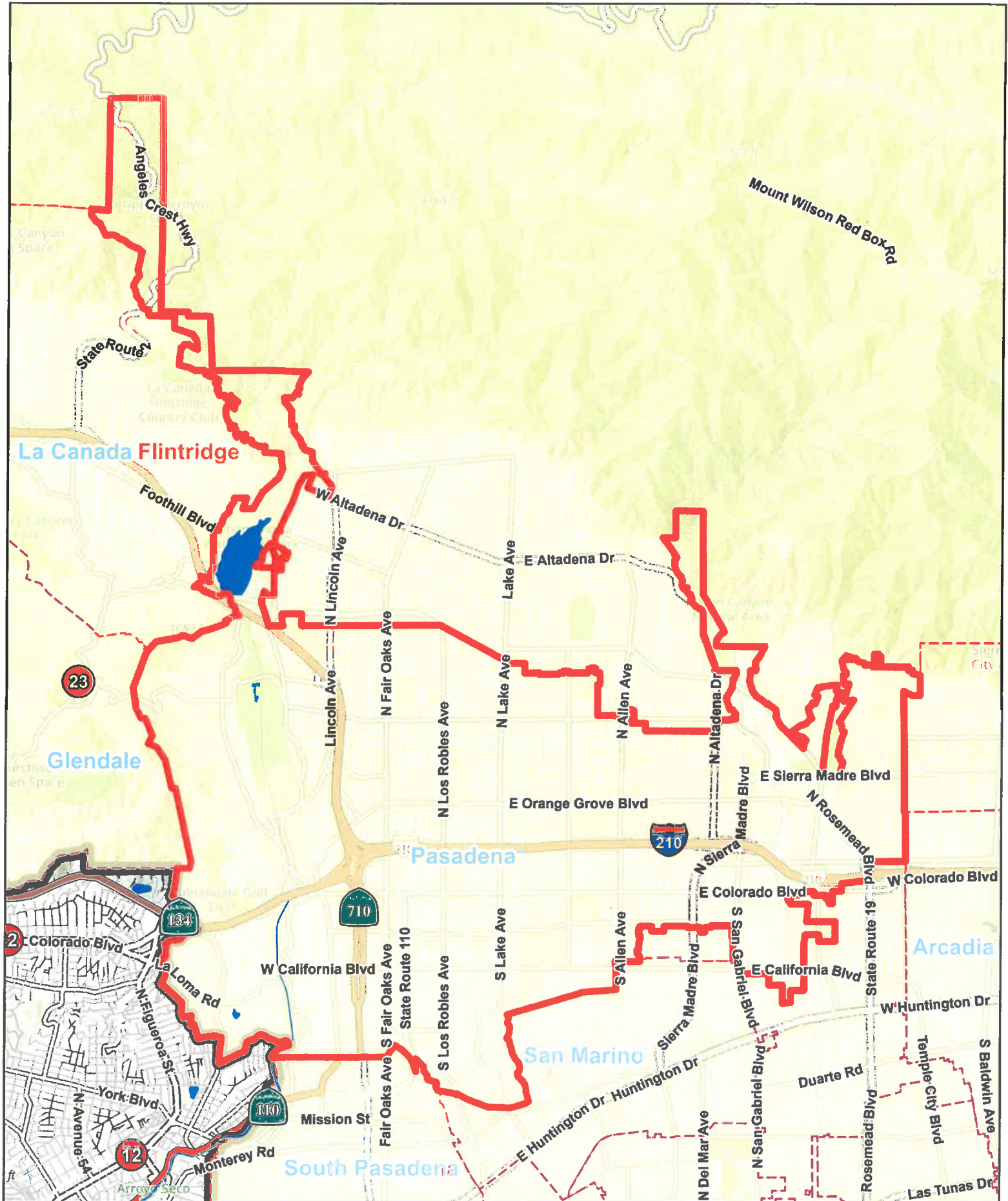


LFD to PAS
Automatic Aid Map No. 3
FIRE RESPONSE
CITY OF PASADENA

- # LAFD Fire Station
- # Glendale Fire Station
- ☀ Burbank Fire Station

- Automatic Aid Boundaries
- Los Angeles City Boundaries
- Other City Boundaries

RESOURCES:
Up to : 2. Light Force
3. Engines
1. Battalion Chief



LFD to GLN

Automatic Aid Map No. 4

FIRE/EMS RESPONSE

N/B HWY 2

- # LAFD Fire Station
- # Glendale Fire Station
- # Burbank Fire Station

- Automatic Aid Boundaries
- Los Angeles City Boundaries
- Other City Boundaries

RESOURCES:

1. Engine



LFD to BRK

Automatic Aid Map No. 5

SWIFT WATER RESCUE

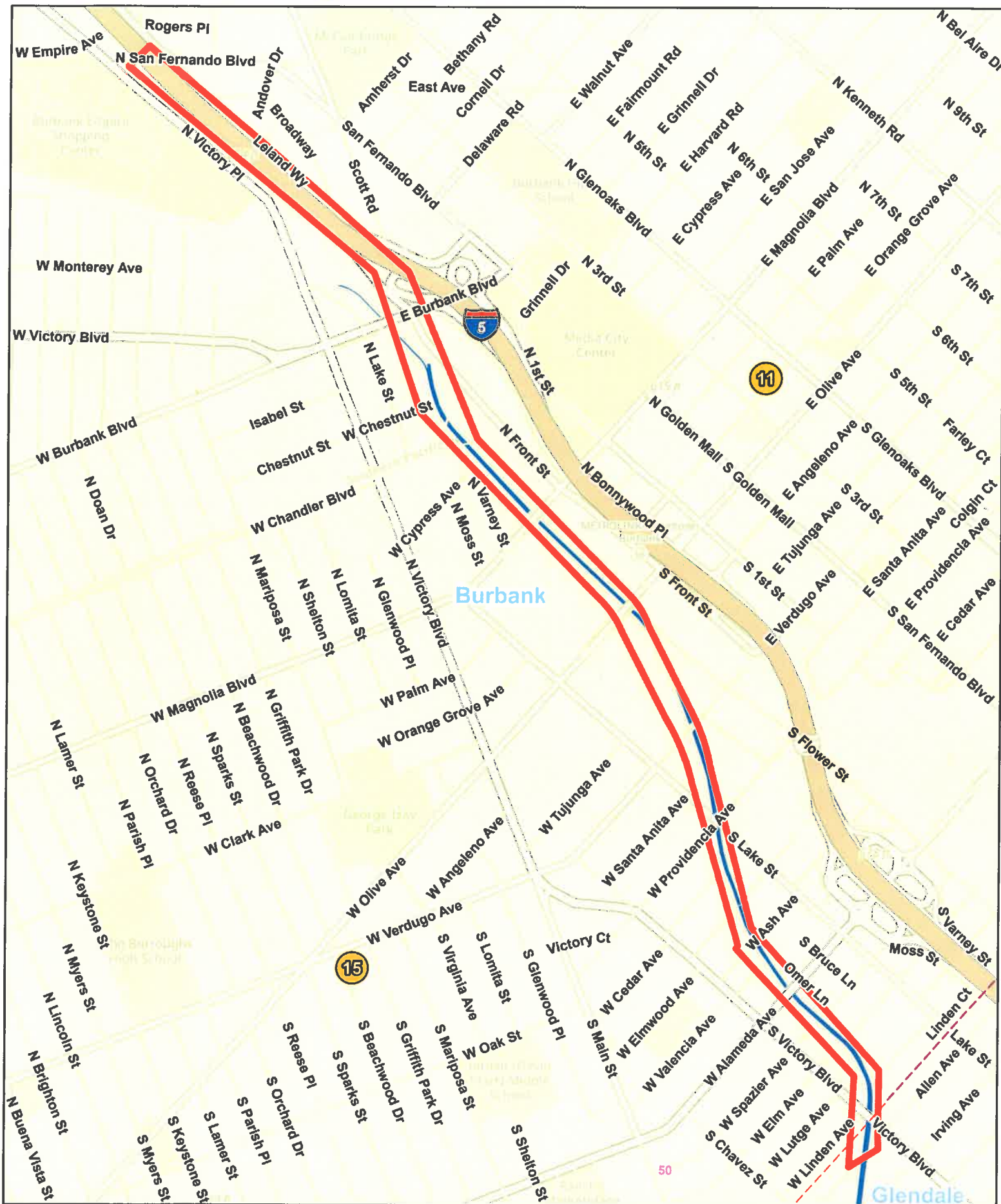
BURBANK WESTERN CHANNEL

- # LAFD Fire Station
- # Glendale Fire Station
- # Burbank Fire Station

- Automatic Aid Boundaries
- Los Angeles City Boundaries
- Other City Boundaries

RESOURCES:

- 1. Battalion Chief
- 1. Swift Water Rescue Team
- 1. Light Force
- 1. Engine



LFD to GLN

Automatic Aid Map No. 5A

SWIFT WATER RESPONSE

VERDUGO CHANNEL and LA RIVER

- # LAFD Fire Station
- # Glendale Fire Station
- # Burbank Fire Station

- Automatic Aid Boundaries
- Los Angeles City Boundaries
- Other City Boundaries

RESOURCES:

- 1. Battalion Chief
- 1. Swift Water Rescue Team
- 1. Light Force
- 1. Engine



GLN to LFD

Automatic Aid Map No. 6

FIRE RESPONSE

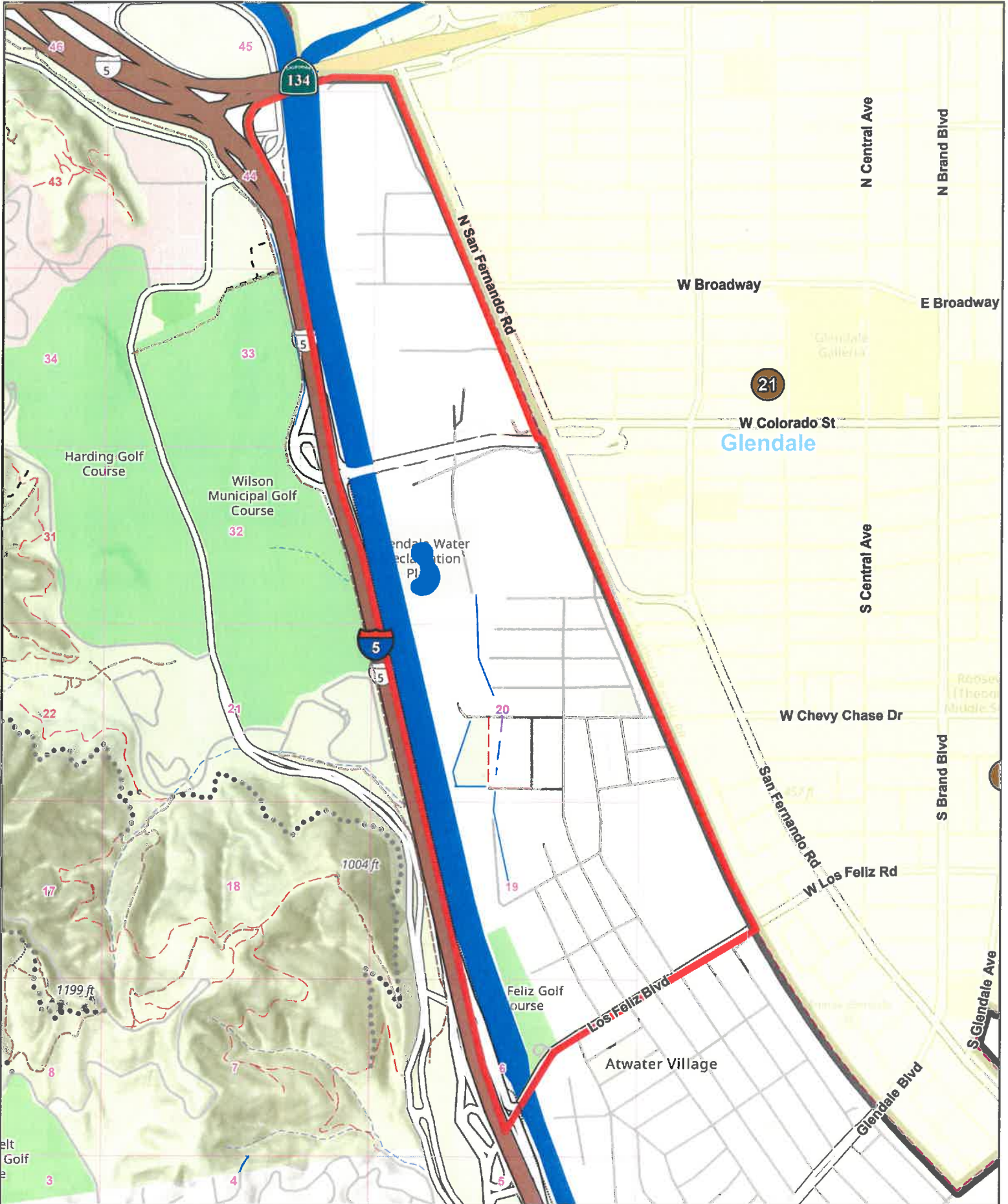
W. SAN FERNANDO RD to L.A. RIVER

- # LAFD Fire Station
- # Glendale Fire Station
- # Burbank Fire Station

- Automatic Aid Boundaries
- Los Angeles City Boundaries
- Other City Boundaries

RESOURCES:

- 1. Truck
- 2. Engines
- 1. Battalion Chief



GLN to LFD

Automatic Aid Map No. 6A

EMS RESPONSE

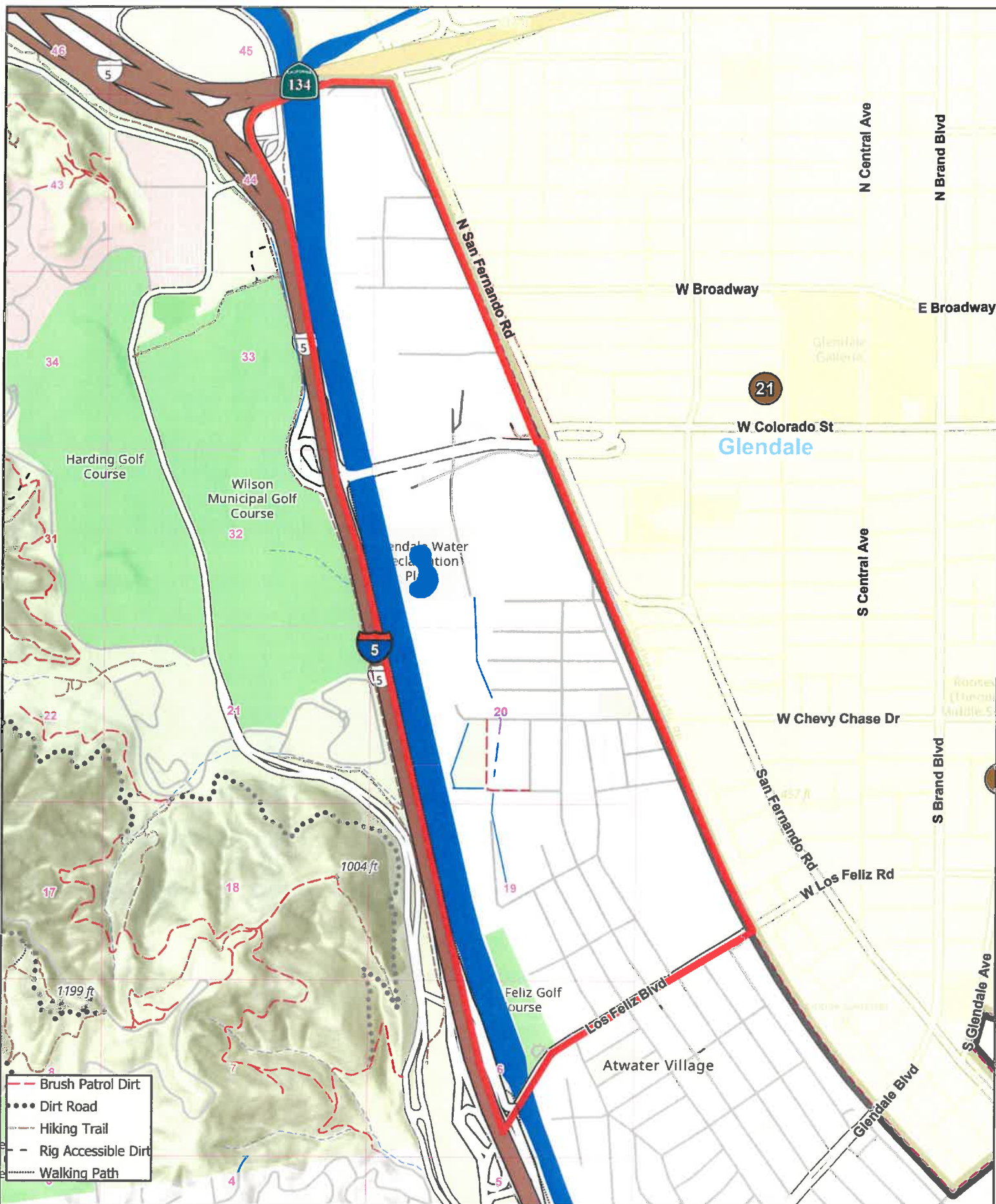
W. SAN FERNANDO RD to L.A. RIVER

- # LAFD Fire Station
- # Glendale Fire Station
- # Burbank Fire Station

- Automatic Aid Boundaries
- Los Angeles City Boundaries
- Other City Boundaries

RESOURCES:

- 1. Engine
- 1. ALS/BLS

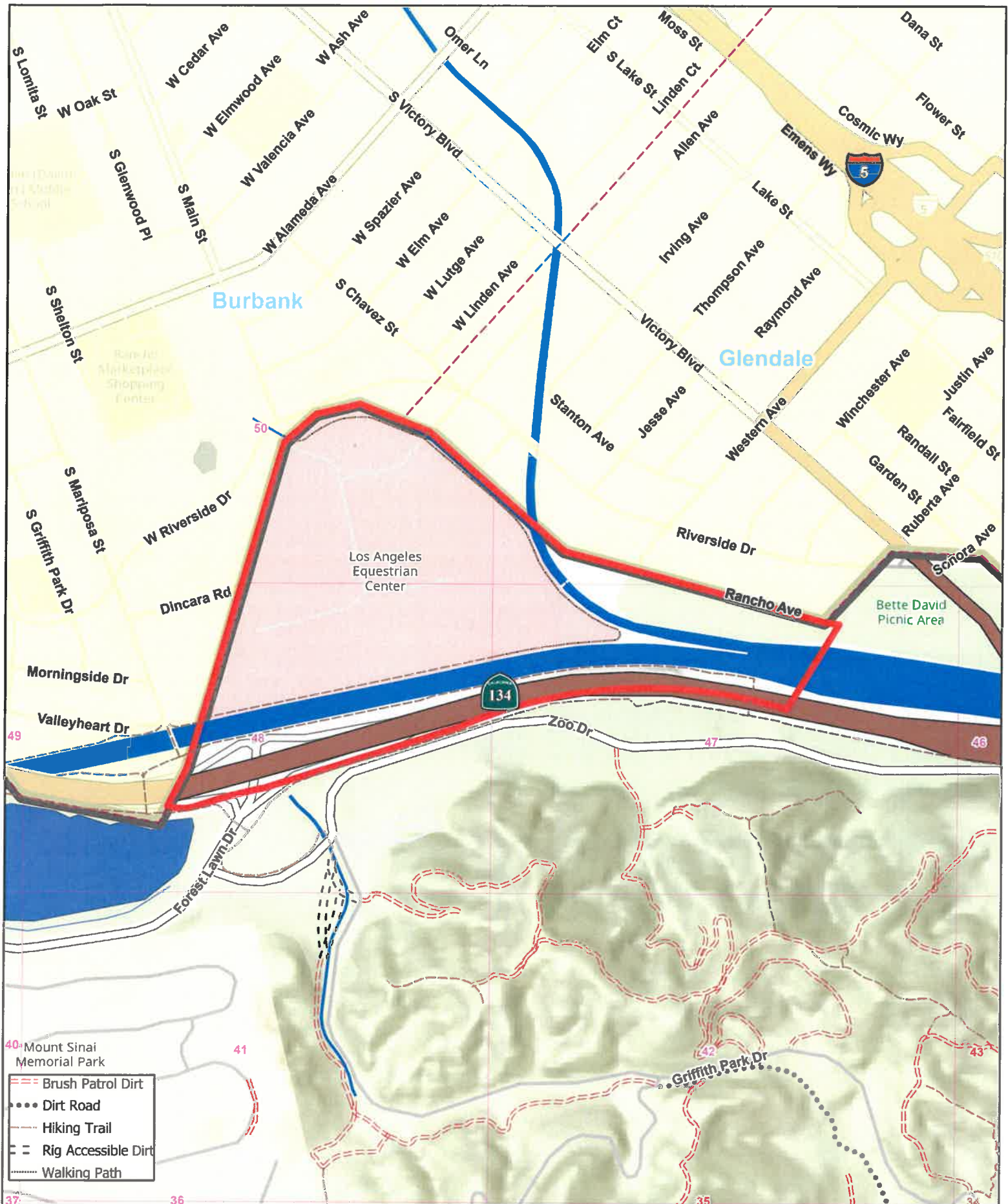


GRIFFITH PARK (Equestrian Ctr)

- # LAFD Fire Station
- # Glendale Fire Station
- # Burbank Fire Station

-  Automatic Aid Boundaries
-  Los Angeles City Boundaries
-  Other City Boundaries

1. Truck
2. Engines
1. Battalion Chief



BRK to LFD

Automatic Aid Map No. 7A

EMS RESPONSE

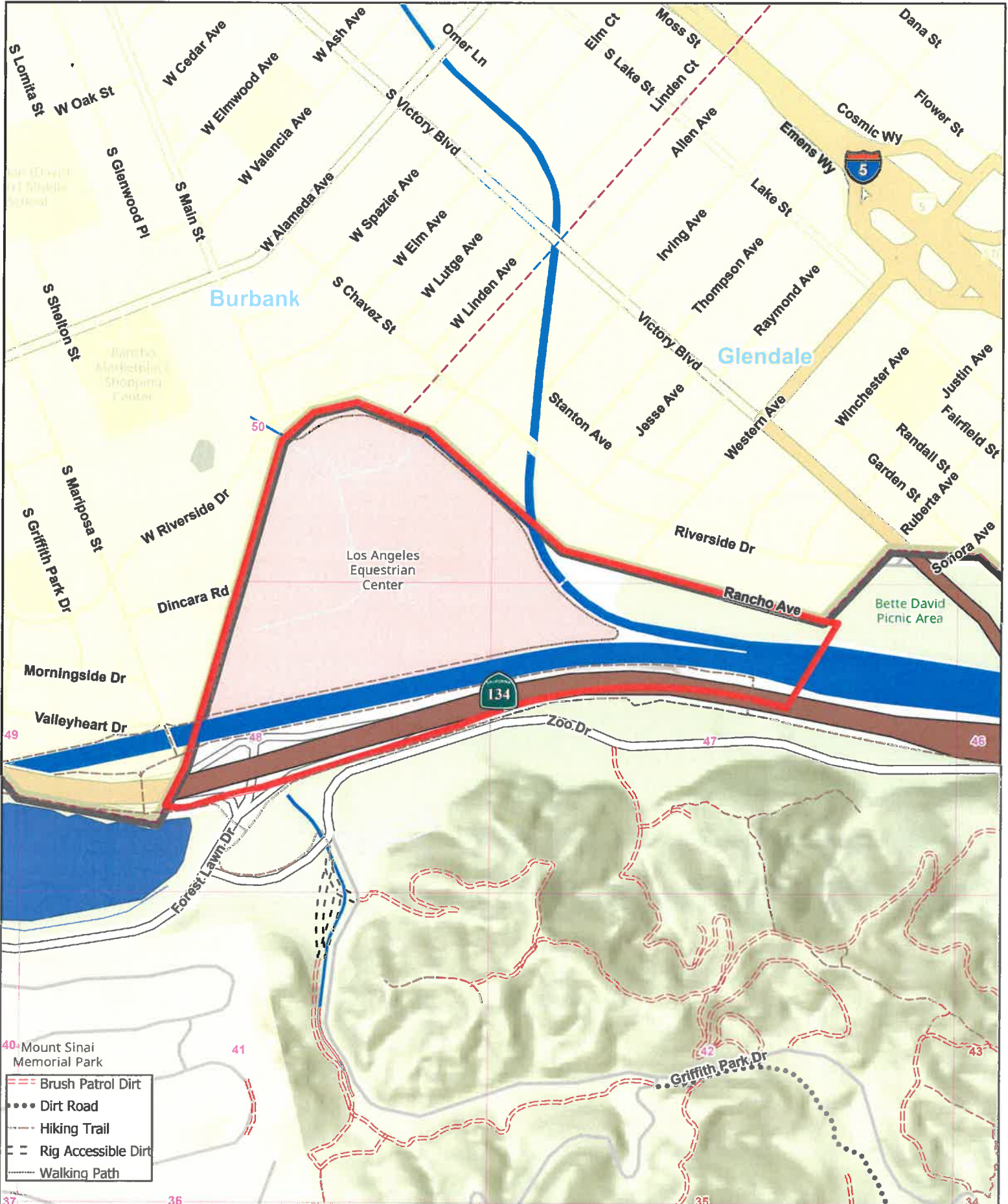
GRIFFITH PARK (Equestrian Ctr)

- # LAFD Fire Station
- # Glendale Fire Station
- Burbank Fire Station

- Automatic Aid Boundaries
- Los Angeles City Boundaries
- Other City Boundaries

RESOURCES:

- 1. Engine
- 1. ALS/BLS



BRK to LFD
Automatic Aid Map No. 8
FIRE RESPONSE
LAKESIDE COUNTRY CLUB

- # LAFD Fire Station
- # Glendale Fire Station
- # Burbank Fire Station

- Automatic Aid Boundaries
- Los Angeles City Boundaries
- Other City Boundaries

- RESOURCES:**
- 1. Truck
 - 2. Engines
 - 1. Battalion Chief



BRK to LFD
Automatic Aid Map No. 8A
EMS RESPONSE
LAKESIDE COUNTRY CLUB

- # LAFD Fire Station
- # Glendale Fire Station
- # Burbank Fire Station

- Automatic Aid Boundaries
- Los Angeles City Boundaries
- Other City Boundaries

- RESOURCES:**
- 1. Engine
 - 1. ALS/BLS



BRK to LFD

Automatic Aid Map No. 9

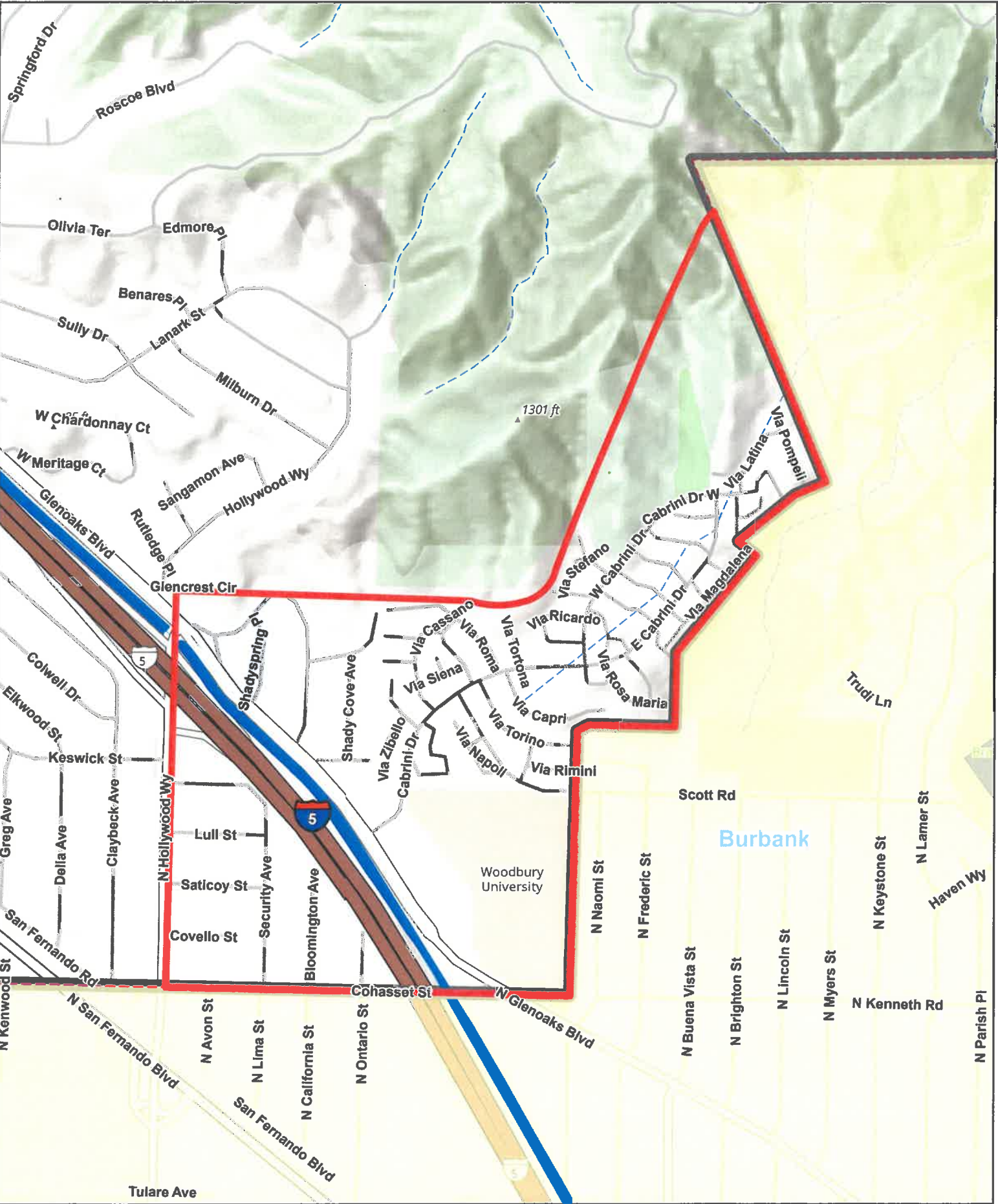
**FIRE RESPONSE
CABRINI**

- # LAFD Fire Station
- # Glendale Fire Station
- # Burbank Fire Station

- Automatic Aid Boundaries
- Los Angeles City Boundaries
- Other City Boundaries

RESOURCES:

- 1. Truck
- 2. Engines
- 1. Battalion Chief



BRK to LFD

Automatic Aid Map No. 9A

EMS RESPONSE

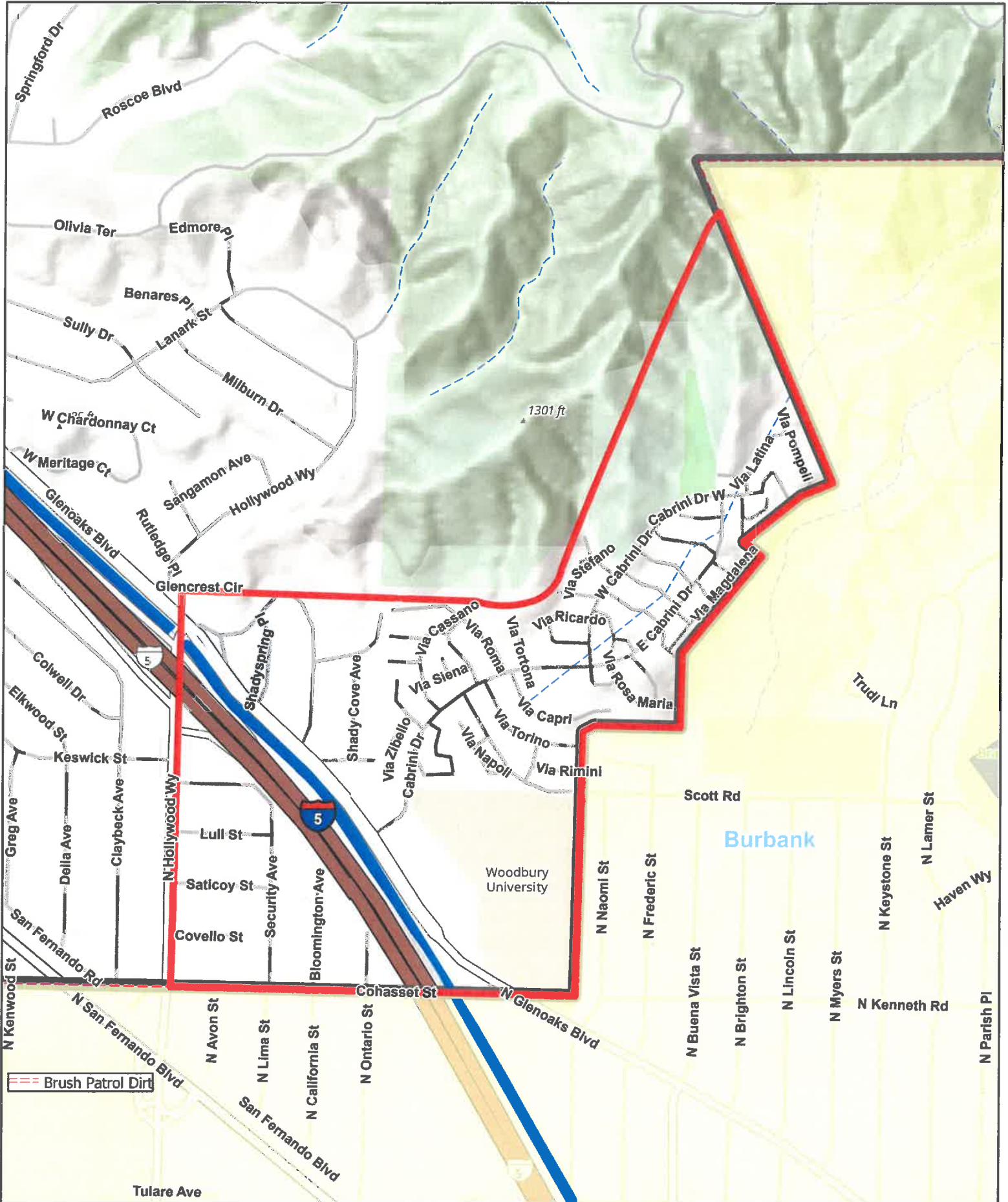
CABRINI

- # LAFD Fire Station
- # Glendale Fire Station
- # Burbank Fire Station

- Automatic Aid Boundaries
- Los Angeles City Boundaries
- Other City Boundaries

RESOURCES:

- 1. Engine
- 1. ALS/BLS



GLN to LFD

Automatic Aid Map No. 10

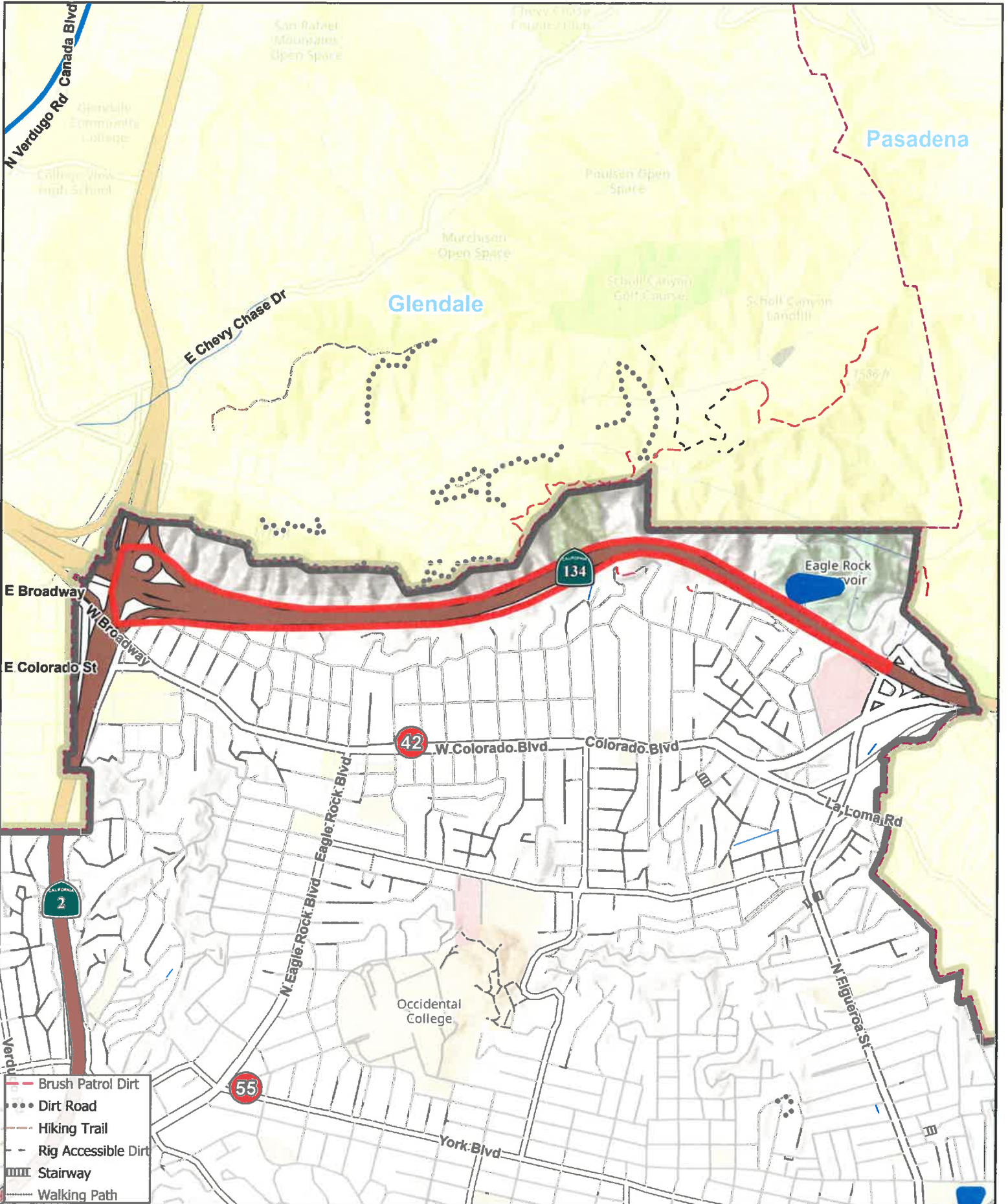
FIRE/EMS RESPONSE

WESTBOUND 134 FWY

- # LAFD Fire Station
- # Glendale Fire Station
- # Burbank Fire Station

- Automatic Aid Boundaries
- Los Angeles City Boundaries
- Other City Boundaries

RESOURCES:
1. Engine



GLN to LFD
Automatic Aid Map No. 11
FIRE/EMS RESPONSE
S/B GOLDEN STATE FWY

- # LAFD Fire Station
- # Glendale Fire Station
- # Burbank Fire Station

- Automatic Aid Boundaries
- Los Angeles City Boundaries
- Other City Boundaries

RESOURCES:
1. Engine



GLN to LFD
Automatic Aid Map No. 12
FIRE/EMS RESPONSE
W/B FOOTHILL FWY

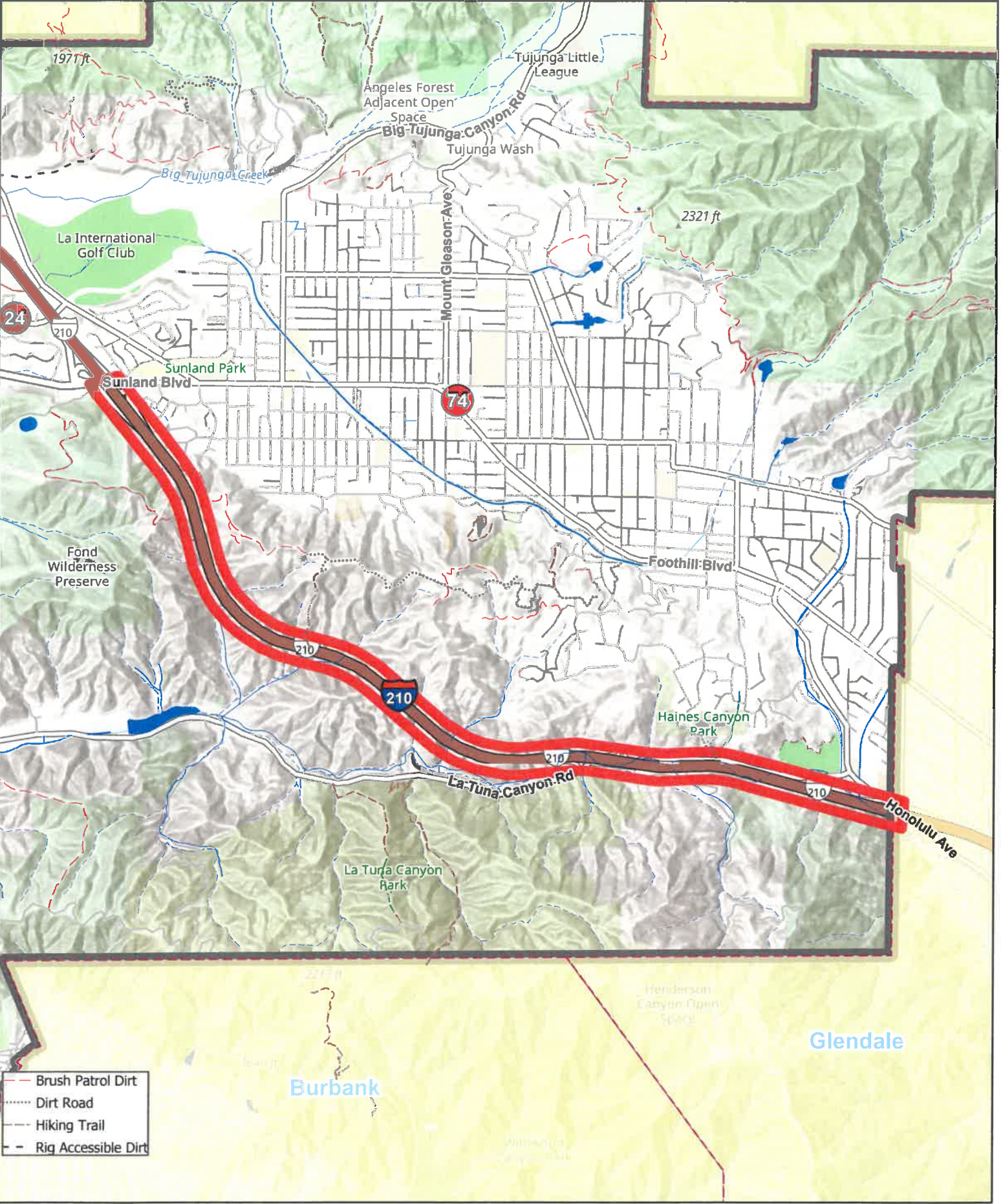
- #

LAFD Fire Station
- #

Glendale Fire Station
- #

Burbank Fire Station
- Automatic Aid Boundaries
- Los Angeles City Boundaries
- Other City Boundaries

RESOURCES:
1. Engine



BRK to LFD

Automatic Aid Map No. 13

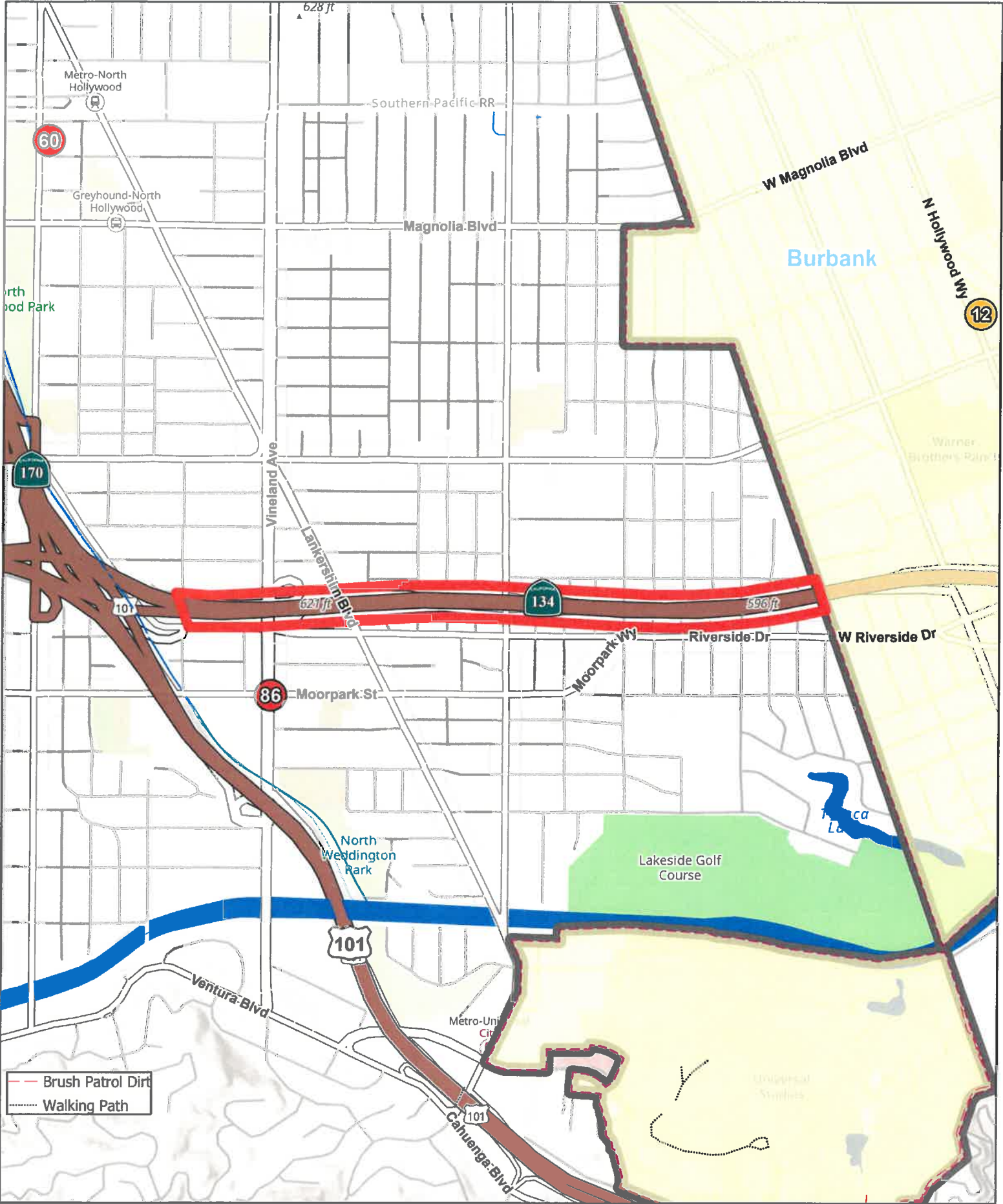
FIRE/EMS RESPONSE

W/B CA-134

- # LAFD Fire Station
- # Glendale Fire Station
- # Burbank Fire Station

- Automatic Aid Boundaries
- Los Angeles City Boundaries
- Other City Boundaries

RESOURCES:
1. Engine



BRK to LFD

Automatic Aid Map No. 14

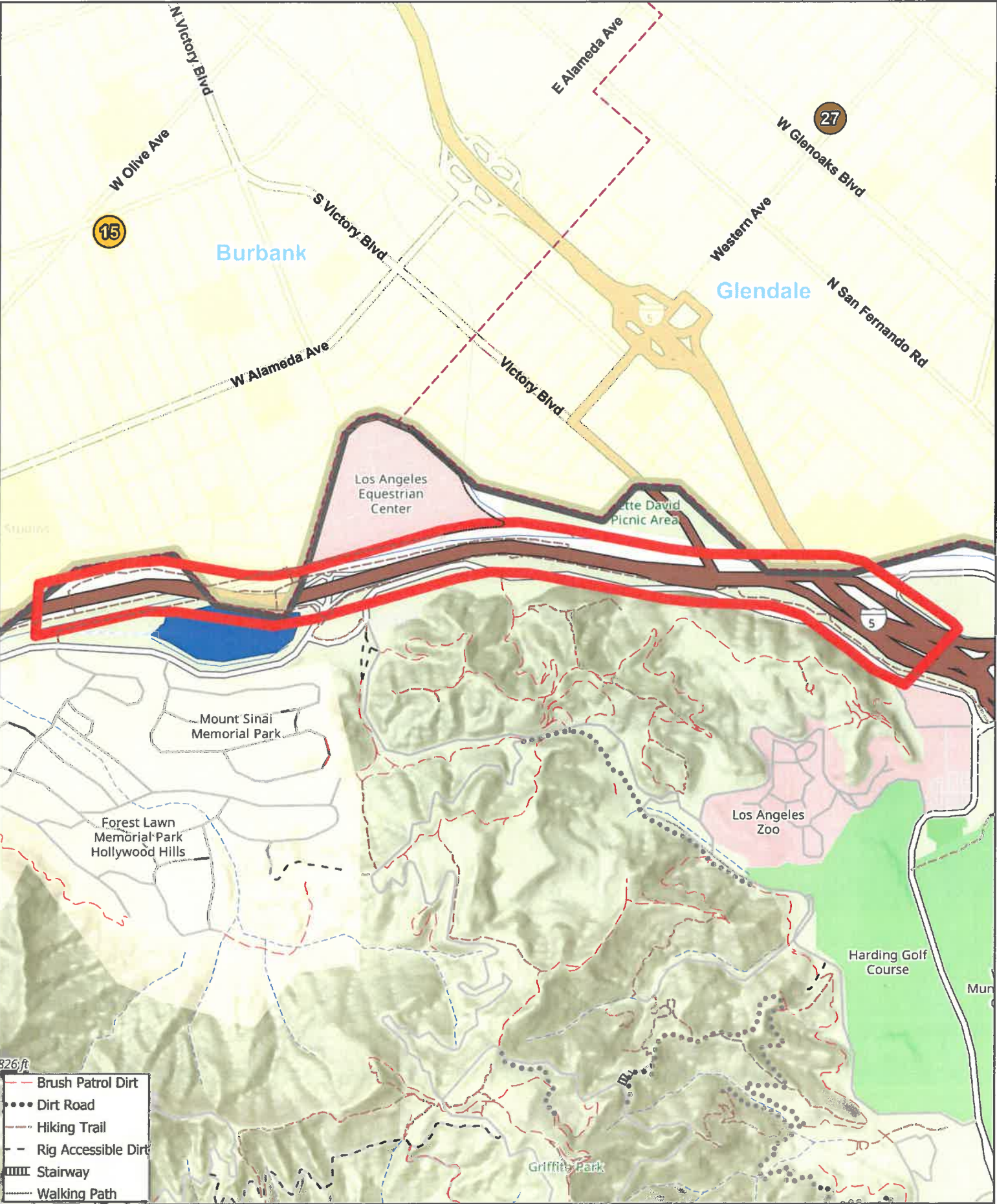
FIRE/EMS RESPONSE

E/B CA-134 FWY

- # LAFD Fire Station
- # Glendale Fire Station
- # Burbank Fire Station

- Automatic Aid Boundaries
- Los Angeles City Boundaries
- Other City Boundaries

RESOURCES:
1. Engine



GLN to LFD

Automatic Aid Map No. 15

FIRE/EMS RESPONSE

5/134 INTERCHANGE

- # LAFD Fire Station
- # Glendale Fire Station
- # Burbank Fire Station

- Automatic Aid Boundaries
- Los Angeles City Boundaries
- Other City Boundaries

RESOURCES:
1. Engine



BRK to LFD

Automatic Aid Map No. 16

SWIFT WATER RESCUE

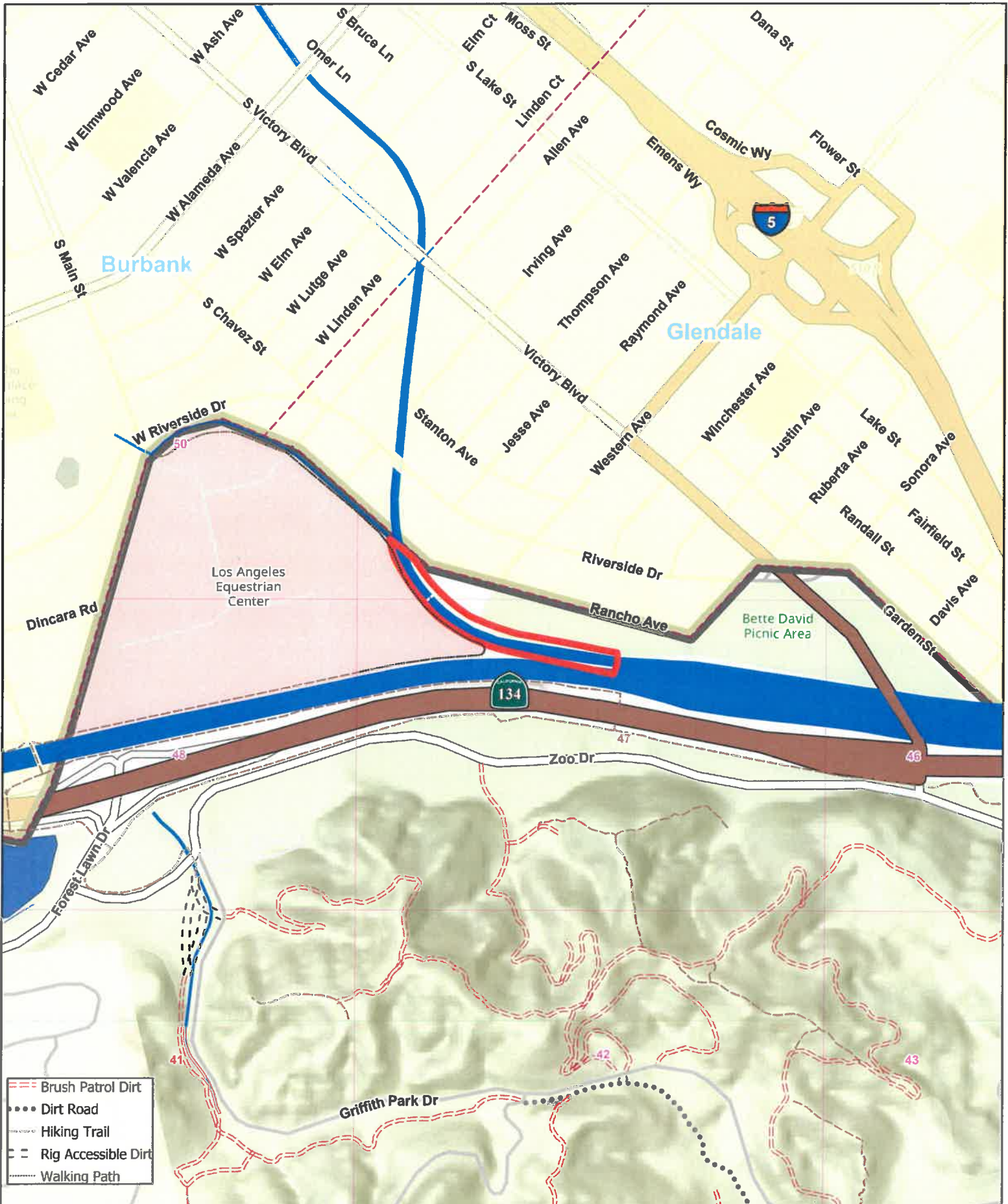
L.A. RIVER/BURBANK CHNL.

- # LAFD Fire Station
- # Glendale Fire Station
- # Burbank Fire Station

- Automatic Aid Boundaries
- Los Angeles City Boundaries
- Other City Boundaries

RESOURCES:

- 1. Battalion Chief
- 1. Engine
- 1. Urban Search Rescue Apparatus
- 1. Truck



BRK to LFD

Automatic Aid Map No. 17

SWIFT WATER RESCUE

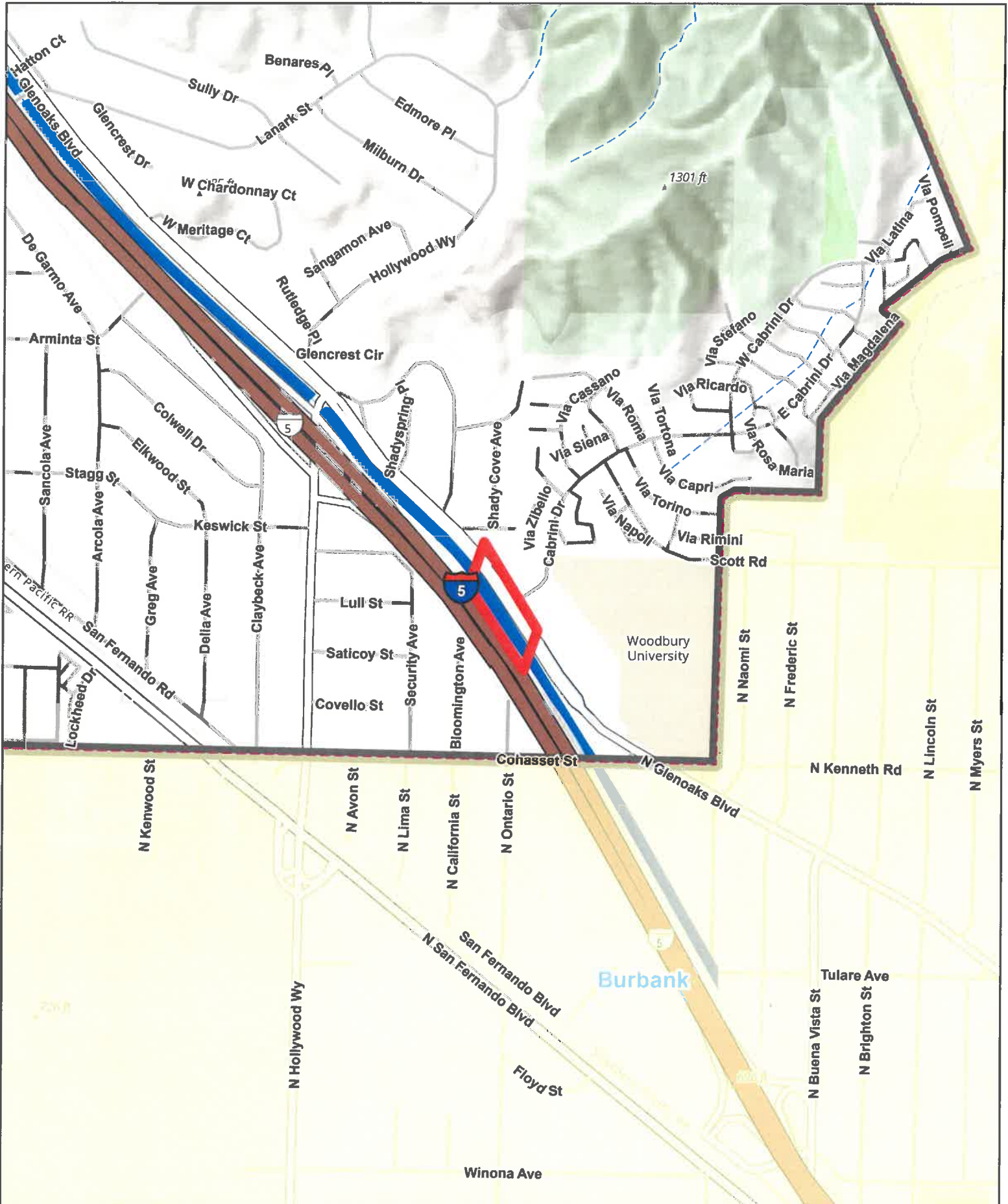
BURBANK CHN. at CABRINI

- # LAFD Fire Station
- # Glendale Fire Station
- # Burbank Fire Station

- Automatic Aid Boundaries
- Los Angeles City Boundaries
- Other City Boundaries

RESOURCES:

- 1. Battalion Chief
- 1. Engine
- 1. Urban Search Rescue Apparatus
- 1. Truck



GLN to LFD

Automatic Aid Map No. 18

SWIFT WATER RESCUE

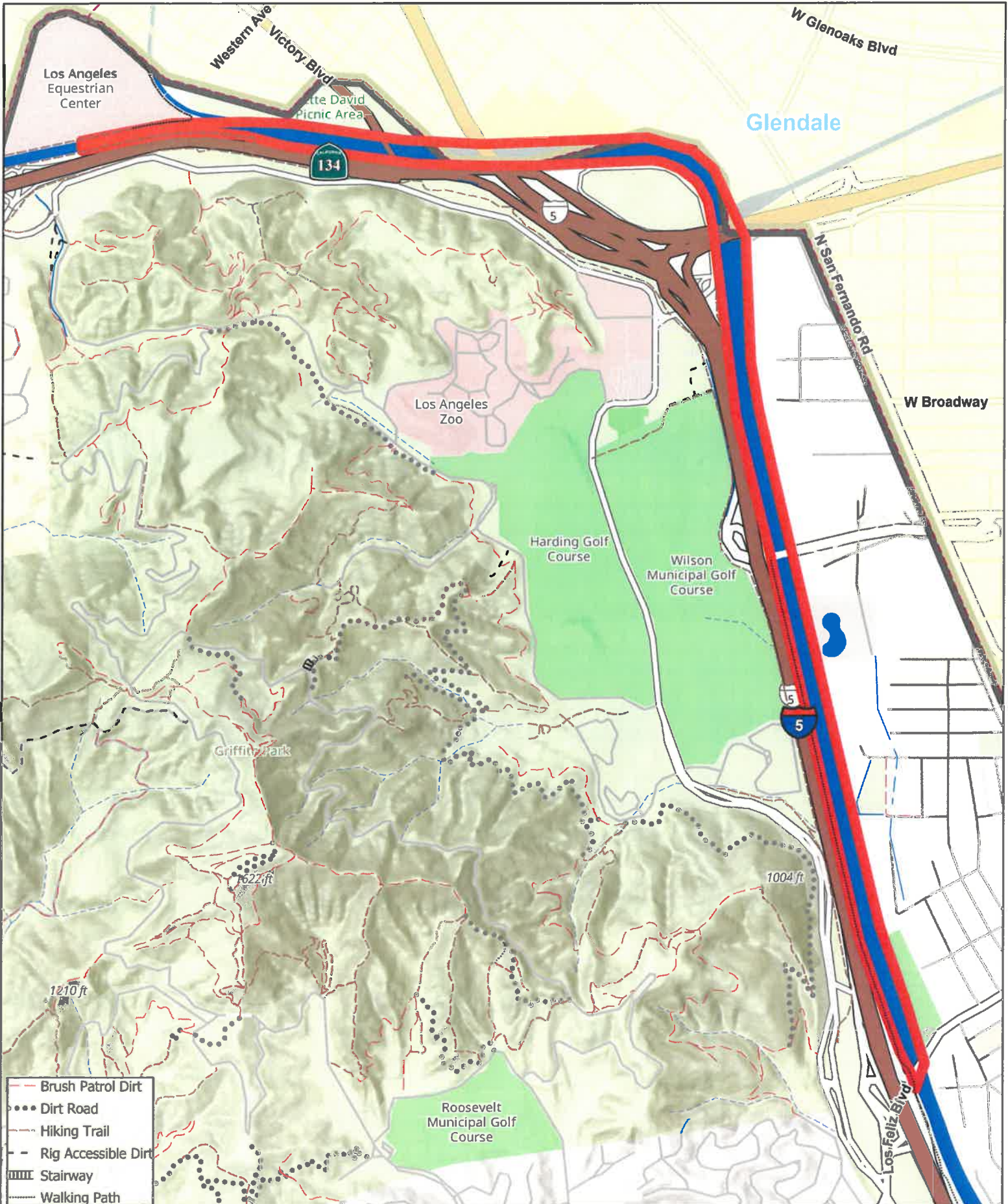
NO. BANK LA RIVER

- # LAFD Fire Station
- # Glendale Fire Station
- # Burbank Fire Station

- Automatic Aid Boundaries
- Los Angeles City Boundaries
- Other City Boundaries

RESOURCES:

- 1. Battalion Chief
- 1. Engine
- 1. Urban Search Rescue Apparatus
- 1. Truck



GLN to LFD

Automatic Aid Map No. 19

BRUSH RESPONSE

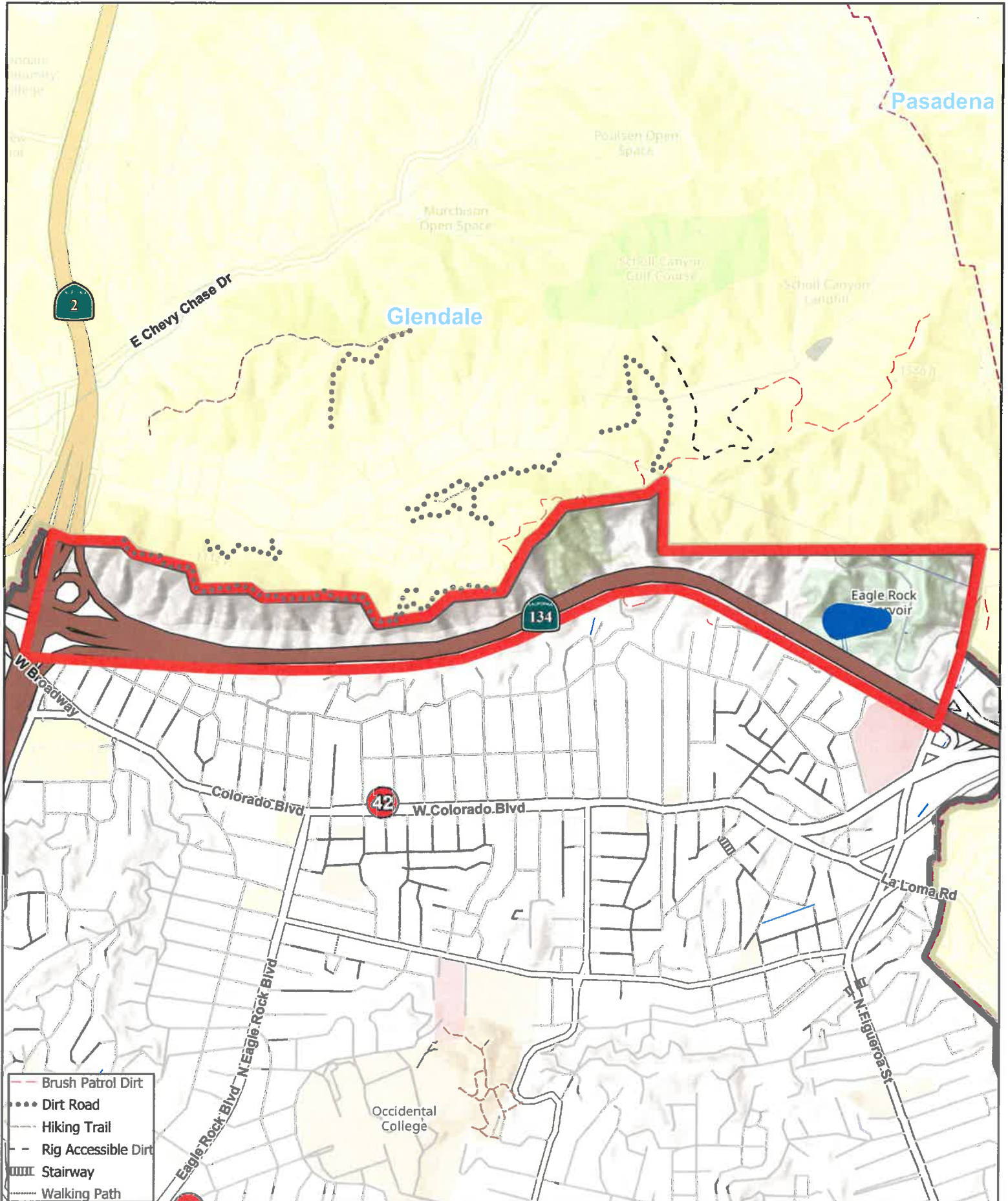
NORTH OF 134 FWY

- # LAFD Fire Station
- # Glendale Fire Station
- # Burbank Fire Station

- Automatic Aid Boundaries
- Los Angeles City Boundaries
- Other City Boundaries

RESOURCES:

- 5. Engines
- 1. Water Tender
- 1. Battalion Commander



GLN to LFD

Automatic Aid Map No. 20

BRUSH RESPONSE

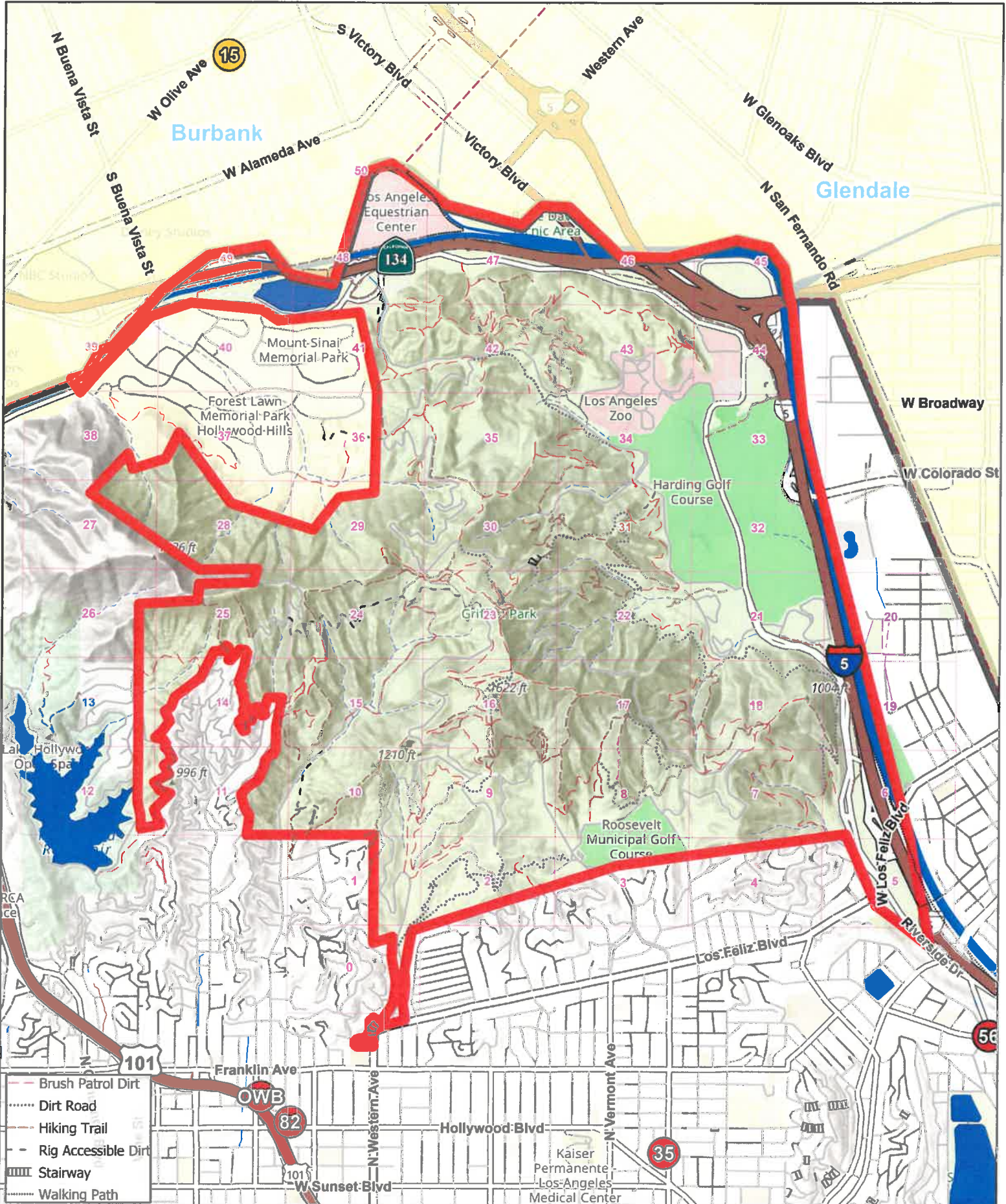
GRIFFITH PARK

- # LAFD Fire Station
- # Glendale Fire Station
- # Burbank Fire Station

- Automatic Aid Boundaries
- Los Angeles City Boundaries
- Other City Boundaries

RESOURCES:

- 5. Engines
- 1. Water Tender
- 1. Battalion Commander



GLN to LFD

Automatic Aid Map No. 21

BRUSH RESPONSE

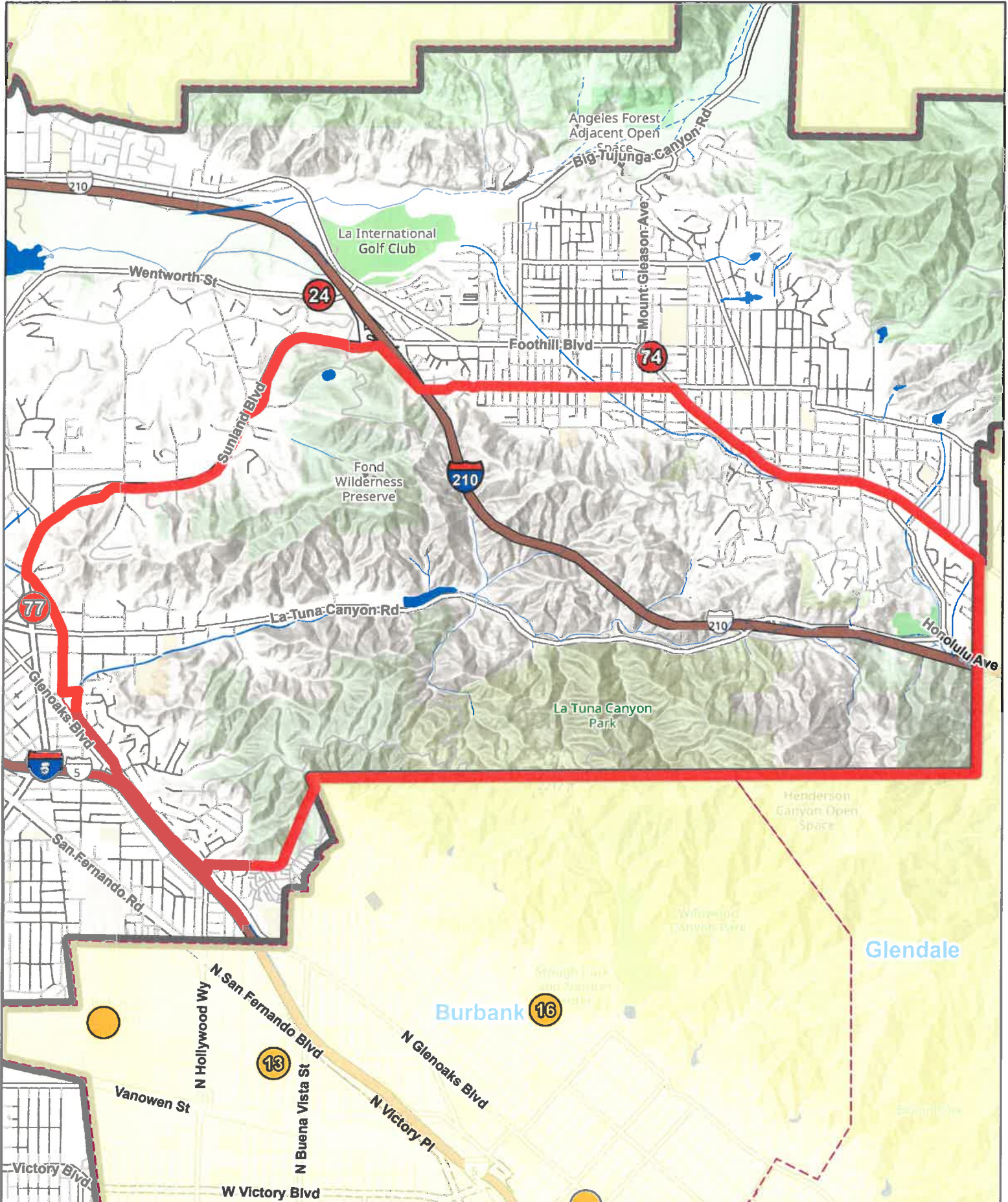
VERDUGO MOUNTAIN

- # LAFD Fire Station
- # Glendale Fire Station
- ☼ Burbank Fire Station

- Automatic Aid Boundaries
- Los Angeles City Boundaries
- Other City Boundaries

RESOURCES:

- 5. Engines
- 1. Water Tender
- 1. Battalion Commander



GLN to LFD
Automatic Aid Map No. 22
BRUSH RESPONSE
MOUNT WASHINGTON

- # LAFD Fire Station
- # Glendale Fire Station
- ☀ Burbank Fire Station

- Automatic Aid Boundaries
- Los Angeles City Boundaries
- Other City Boundaries

- RESOURCES:**
- 5. Engines
 - 1. Water Tender
 - 1. Battalion Commander

