



Operations South Bureau Staff

- ▣ Ronnie Villanueva, Deputy Chief
- ▣ Jaime Moore, Assistant Chief
- ▣ James Holland, Captain II
 - ▣ Training Support Specialist
- ▣ Todd Cremins, Captain I/Paramedic
 - ▣ EMS/Resilience Officer
- ▣ Lori Skroce, Management Analyst
- ▣ Erika Cabrera, Secretary
- ▣ Nanci Medina, EMS Educator



Battalions & Stations

Battalion 6

Fire Stations 36, 38, 40,
48, 49, 79, 85, 101, 110,
111, 112



Battalion 13

Fire Stations 15, 21, 33,
46, 57, 64, 65, 66



Battalion 18

Fire Stations 34, 43, 58,
61, 68, 92, 94



Communities Served

- ▣ Century City
- ▣ Crenshaw
- ▣ Baldwin Hills
- ▣ Fairfax
- ▣ Harbor City
- ▣ Harbor Gateway
- ▣ Leimert Park
- ▣ Mid-City
- ▣ San Pedro
- ▣ Palms
- ▣ Pico/Robertson
- ▣ South Los Angeles
- ▣ Hyde Park
- ▣ Watts

- ▣ Wilmington





Council Districts & Members



Council District 4
David Ryu
Fire Station 61
68



Council District 5
Paul Koretz
Fire Stations 43, 58, 92
67



Council District 8
Marqueece Harris-Dawson
Fire Stations 57, 64, 66
15, 33, 34, 46, 65, 94



Council District 9
Current Price, Jr.
Fire Stations 15, 21, 33, 46
57, 64, 65, 66



Council District 10
Herb Wesson, Jr.
Fire Station 34, 68, 94
69



Council District 15
Joe Buscaino
Fire Stations 36, 38, 40, 48, 49, 65, 79,
85, 101, 110, 111, 112
64

Neighborhood Councils

30 Neighborhood Councils

Battalion 6

- Central San Pedro
- Coastal San Pedro
- Harbor City
- Harbor Gateway North
- Harbor Gateway South
- Northwest San Pedro
- Wilmington

Battalion 13

- Central Alameda
- CANN DU
- Empowerment Congress Central Area
- Empowerment Congress North Area
- Empowerment Congress Southeast Area
- Empowerment Congress Southwest Area
- Park Mesa Heights
- South Central
- Voices of 90037
- Watts
- Zapata-King

Battalion 18

- Empowerment Congress West Area
- Greater Wilshire
- Mid City
- Mid City West
- Olympic Park
- P.I.C.O.
- Palms
- South Robertson
- United Neighborhoods
- West Adams
- Westside
- Westwood

Major Stakeholders



University of Southern California



Los Angeles Memorial Coliseum &
Banc of California Stadium



Port of Los Angeles



The Grove/Farmers Market

University of Southern California

- ▣ California's oldest private research university
- ▣ Largest private employer in the City of Los Angeles
 - 25,000 employees
- ▣ 44,000 students
 - Undergraduate and graduate
- ▣ 308-acre campus



Los Angeles Memorial Coliseum & Banc of California Stadium



USC Football



LA Rams Football



Banc of California Stadium
Los Angeles Football Club

Port of Los Angeles

- ▣ Nation's #1 port in terms of container volume
 - Over 8 million TEUs per year
- ▣ 7,500 acres in size
 - 4,300 acres of land
 - 3,200 acres of water
 - 43 miles of waterfront
- ▣ 27 terminals
 - Container, automobile, liquid bulk, dry bulk, breakbulk, cruise



The Grove/Farmers Market

The Grove



- 600,000 square foot retail and entertainment complex
- 18 million visitors annually
 - More than Disneyland!

Farmers Market



- Over 100 vendors such as gourmet grocers, tourist shops, and eateries
- Los Angeles Historic Landmark
- In operation since 1934

Incident Types

- ▣ Battalion 6 (Harbor Area)
 - Cliff Rescues
 - Cruise Ship EMS Incidents
 - Multi-Casualty Incidents
 - Container Terminal Incidents
 - Marina Liveaboards
 - Vessel Fires
 - Sinking Vessels
 - Wharf Fires
 - Airplane Collisions



Incident Types

- ▣ Battalion 13 (South Los Angeles)
 - LAFD's Busiest Battalion
 - ▣ Almost 87,141 total calls in 2017
 - ▣ Over 49,750 in 2018, thus far
 - Structure Fires
 - EMS Incidents
 - Metro Blue Line Rail Incidents
 - Freeway Incidents



Incident Types

- ▣ Battalion 18 (South & West Los Angeles)
- ▣ Variety of Terrain
 - High Rise
 - Structure Fires
 - Brush Fires
 - Light Rail
 - Freeway Incidents



Special Resources

- ▣ Advanced Provider Response Unit - FS 15
- ▣ Fireboats & Dive Program- FS 49, 110, 111, 112
- ▣ Urban Search & Rescue (US&R) - FS 85
- ▣ HAZMAT - FS 21, 48



Events



Los Angeles Fleet Week



FYF Fest



Taste of Soul



Pick Pico

Los Angeles Fleet Week

Four Day Event Featuring:

- ▣ Guided Military Ship Tours
- ▣ Military Demonstrations
- ▣ Apparatus Display
- ▣ Live Entertainment
- ▣ Food Trucks



Taste of Soul

- ▣ One Day Family Festival on Crenshaw Blvd in Baldwin Hills/Crenshaw/Leimert Park Area
- ▣ Event Features:
 - Live Music & Entertainment
 - Great Food
 - Health Screenings
 - Job Recruitment
 - Community Outreach
- ▣ Event Attendance
 - Grown from 50,000 in 2005 to over 350,000 in 2017



FYF Fest

- ▣ Annual two-day music festival
 - Rock, Indie, Hip-Hop, & Electronic Music
- ▣ Held at LA Sports Arena & Exposition Park in South LA
- ▣ Over 70,000 attendees over two days



Pick Pico

- ▣ Community Street Fair in West LA
 - Hosted by The Westside Neighborhood Council
- ▣ Over 100 booths
 - Food, live entertainment, kids activities, etc.
- ▣ Promotes and supports local business and community environment



Training Coordination

- ▣ Fireground Survival
- ▣ EMT Skills
- ▣ Paramedic CE
- ▣ Dive Program
- ▣ HAZMAT FRO
- ▣ Active Shooter
- ▣ Oil Refinery
Training Partnership
- ▣ Alameda
Corridor Drill
- ▣ Incident Command
& "Mayday"



SAVE Card Program

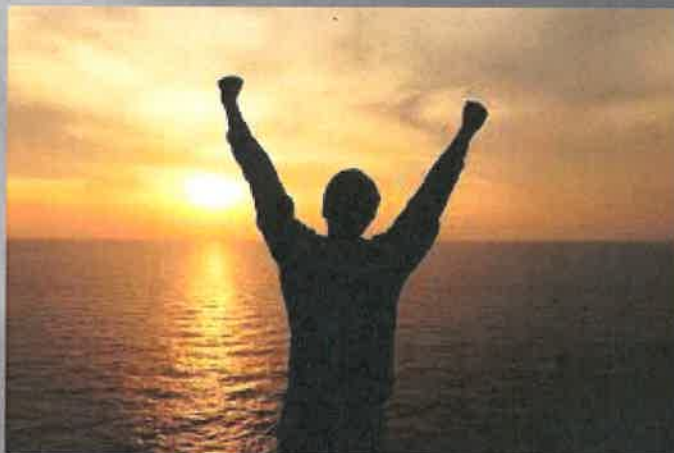
- ▣ Supplying Aid to Victims of Emergency (SAVE)
- ▣ California Fire Foundation Program
- ▣ OSB oversees the program for LAFD
- ▣ Provide short-term support for victims of disasters
- ▣ \$100 debit cards provided
 - Food
 - Medicine
 - Lodging
 - Transportation
- ▣ 167 cards activated
 - Since program adoption



Challenges

- ❑ Active Bureau
 - Preparing for large events and gatherings
 - OSB has frequent large-scale events
 - Two professional Sports teams, one College team with high attendance, each week
 - No EIT for Battalion 6
 - 11 stations and Dive Program
 - Providing equal attention to all three battalions
- ❑ All sworn OSB members are special duty
 - No platoon duty members
 - On-call for significant events
- ❑ Uniqueness of the Port of Los Angeles
 - OSB could benefit from having a dedicated staff member managing marine resources and programs in the Port of LA

Accomplishments



Banning High School Firefighter Magnet Program

- ❑ Introduces and exposes high school students to careers in Firefighting and Emergency Medical Services
- ❑ Hands-on experience
- ❑ Skills
 - Fire/Life Safety
 - CPR
 - Physical Fitness
 - Community Service



Terminal Mediation

- ❑ Interact with labor and terminal management to prevent labor stoppage
- ❑ Extinguished crane fire



Kaiser Permanente South Bay 911 Call Reduction

- ❑ Problem: Increased 911 call volume
- ❑ Solution: Kaiser and OSB staff met regularly to address problem and identify solutions
- ❑ Results: Reported 61% drop in 911 calls



MySafe:LA

- ❑ Partnership with MySafe:LA
 - Safe Community Project
- ❑ Fire/Life Safety Education
 - Marlton School for the Deaf
 - Park La Brea Apartment Complex
 - Gulf Avenue Elementary School
- ❑ Smoke Detector Canvassing
 - Performed Throughout Bureau
- ❑ Hands-Only CPR

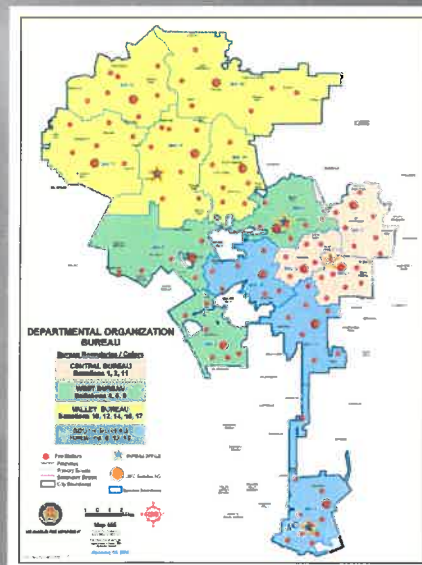


Banc of California Stadium Los Angeles

- Home of the Los Angeles Football Club
 - Professional soccer franchise based in Los Angeles
 - Successfully opened on April 18, 2018
 - Hosting of sporting and concert events
 - 25,000 seating capacity
- 



Benefits of 4-Bureau Structure



Community Relations

- ❑ 4 Bureau Structure has allowed for Better Community Relations
 - Bureau Office is the singular point of contact
 - Newsletter has allowed for the Bureau to communicate directly to citizens and neighborhood councils



Councilmember Relations

- ❑ Developed relationships with Council Offices
- ❑ Key staff knows OSB is available
- ❑ CD 15 in same office building as OSB
- ❑ Responded to dozens of requests
- ❑ Notification of significant incidents



Inter-Agency Relations

- ▣ Committees
 - Area Maritime Security Committee
 - Port Protector
 - Southern California Marine Firefighting Workgroup
 - ▣ SCIMO (So. Cal. Industrial Mutual Aid Org)
 - ▣ POTR (Port Ops Threat Reduction)
 - ▣ United States Coast Guard
 - ▣ Los Angeles Port Police
 - ▣ US Customs & Border Protection
 - ▣ US Immigration and Customs Enforcement
 - ▣ Long Beach Fire Department
 - ▣ Mayor's Crisis Response Team
 - ▣ Unified Command Posts at Large Scale Special Events
- And More!

