

June 6, 2017

LOS ANGELES FIRE DEPARTMENT



RALPH M. TERRAZAS
FIRE CHIEF

June 6, 2017

BOARD OF FIRE COMMISSIONERS
FILE NO. 17-069

TO: Board of Fire Commissioners

FROM:  Ralph M. Terrazas, Fire Chief

SUBJECT: FIRESTAT SECTION STATUS REPORT ON TIERED FIRESTAT
MEETINGS, DATA DASHBOARDS AND DATA TRENDS FROM 2013 TO
2016

FINAL ACTION:	<input type="checkbox"/> Approved	<input type="checkbox"/> Approved w/Corrections	<input type="checkbox"/> Withdrawn
	<input type="checkbox"/> Denied	<input type="checkbox"/> Received & Filed	<input type="checkbox"/> Other

SUMMARY

At the last quarterly update on the FireStat process, it was requested that a written report be provided on the tiered process, data trends, and how the data is made accessible to the field.

RECOMMENDATION

That the Board:
Receive and file.

FISCAL IMPACT

No fiscal impact.

DISCUSSION

In 2017, the Department continued implementing the performance management process by introducing Tiered FireStat. This tiered process is designed to promote communication through the ranks with the goal of expanding the Department's engagement on all levels. Since the implementation of this tiered process, the Department has held FireStat Inspection Meetings for Quarter 1 and Quarter 2 in all four Geographic Bureaus on two of the three platoons. FireStat Inspection Meetings for the third platoon are scheduled to begin in June. Additionally, FireStat Inspection Meetings have been held in various Bureaus, Sections, and Units within Administrative Operations. FireStat is working on all levels to establish a foundation of performance management that improves the Department's effectiveness and efficiency.

The FireStat Section also acts as the stewards of data for the Department serving both internal and external requests for information, data and reports. To manage the performance for members in the field, the FireStat Section has created online dashboards which allow field personnel to observe their performance in a number of areas. The dashboards visualize and quantify metrics such as Turnout Time, Travel Time, Composite Operational Response Time (CORT=turnout time and travel time added together), Frequent Automatic Alarm Locations, and EMS Call Generators. All of these metrics can be seen starting from 2013 to the current date. The data can be analyzed by platoon, separated by Bureau, Battalion, Station, and/or Unit. These dashboards are available to all members via a link on the LAFDweb portal. FireStat actively works with sworn members to regularly improve and update these dashboards. The goal is to increase accountability and to promote ownership within the field. FireStat is constantly working to improve the accessibility of data.

The attached graphs will help visualize the number of incidents and response times that the LAFD has responded to since calendar year 2013. The graphs will help identify trends that the Department has observed over the last 3 years since the FireStat process began. Included are Incident Counts, Turnout Time, Travel Time, and CORT. These metrics are available City-wide, for each Geographic Bureau, and have been isolated by Battalion. The metrics have been analyzed for EMS Incidents, Non-EMS Incidents, and the Total Incidents to which the Department responded. Included are City-wide heat maps which indicate the Incident Counts for EMS, Non-EMS, and the total incidents for each calendar year beginning in 2013 and ending in 2016.

CONCLUSION

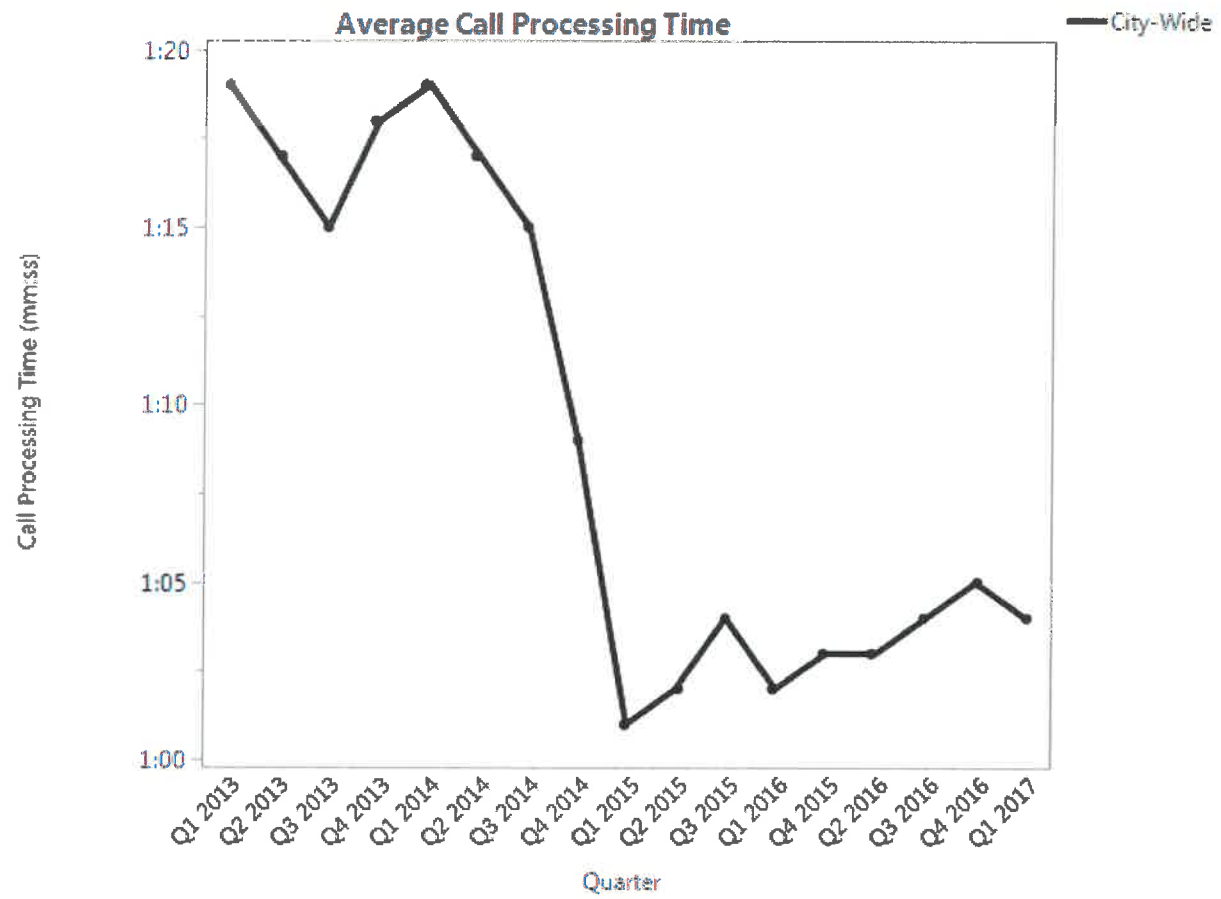
FireStat continues to evolve through its implementation of performance management as well as through its role as stewards of Department data. With FireStat, and the establishment of metrics, the Department is able to analyze its effectiveness and efficiency on all levels.

Board report prepared by Jaime Moore, Battalion Chief, FireStatLA.

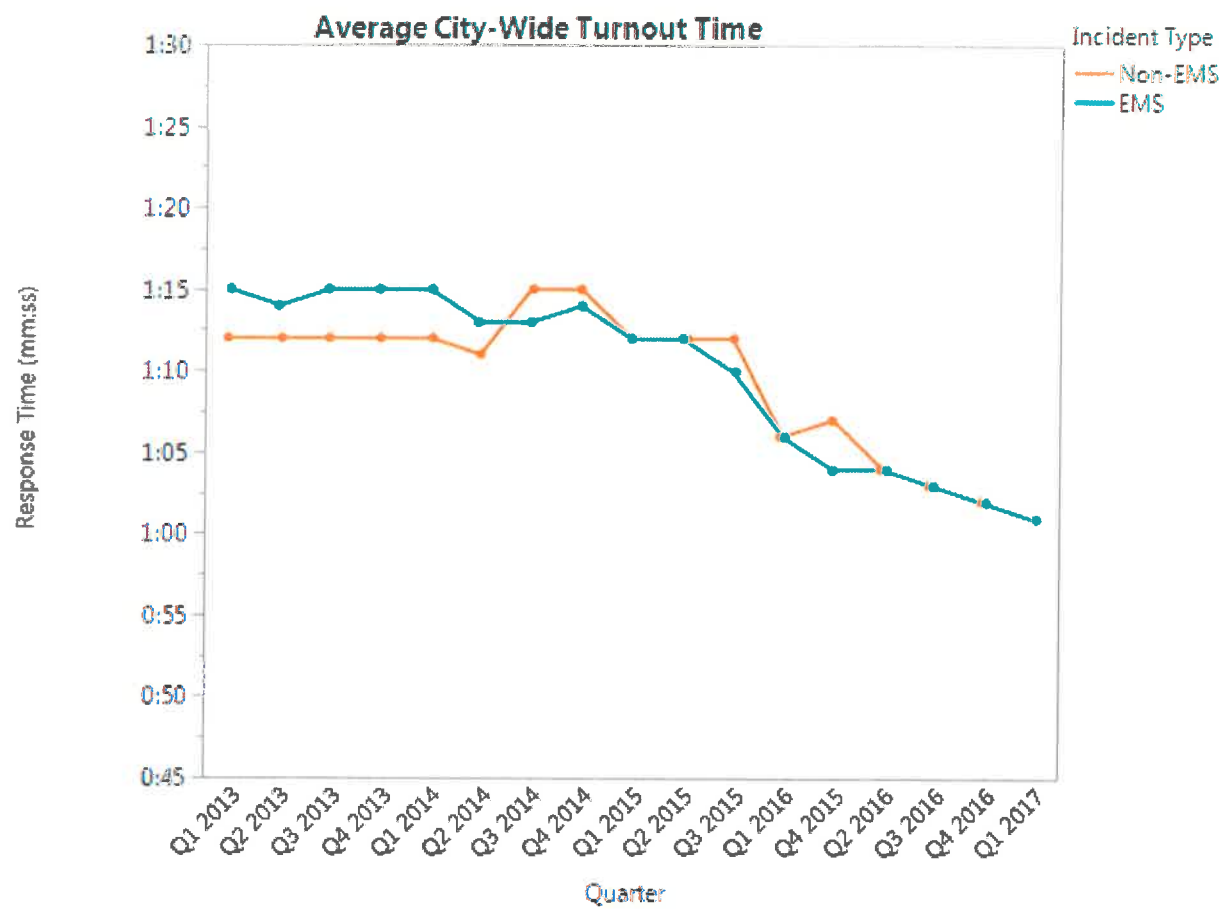
Attachments

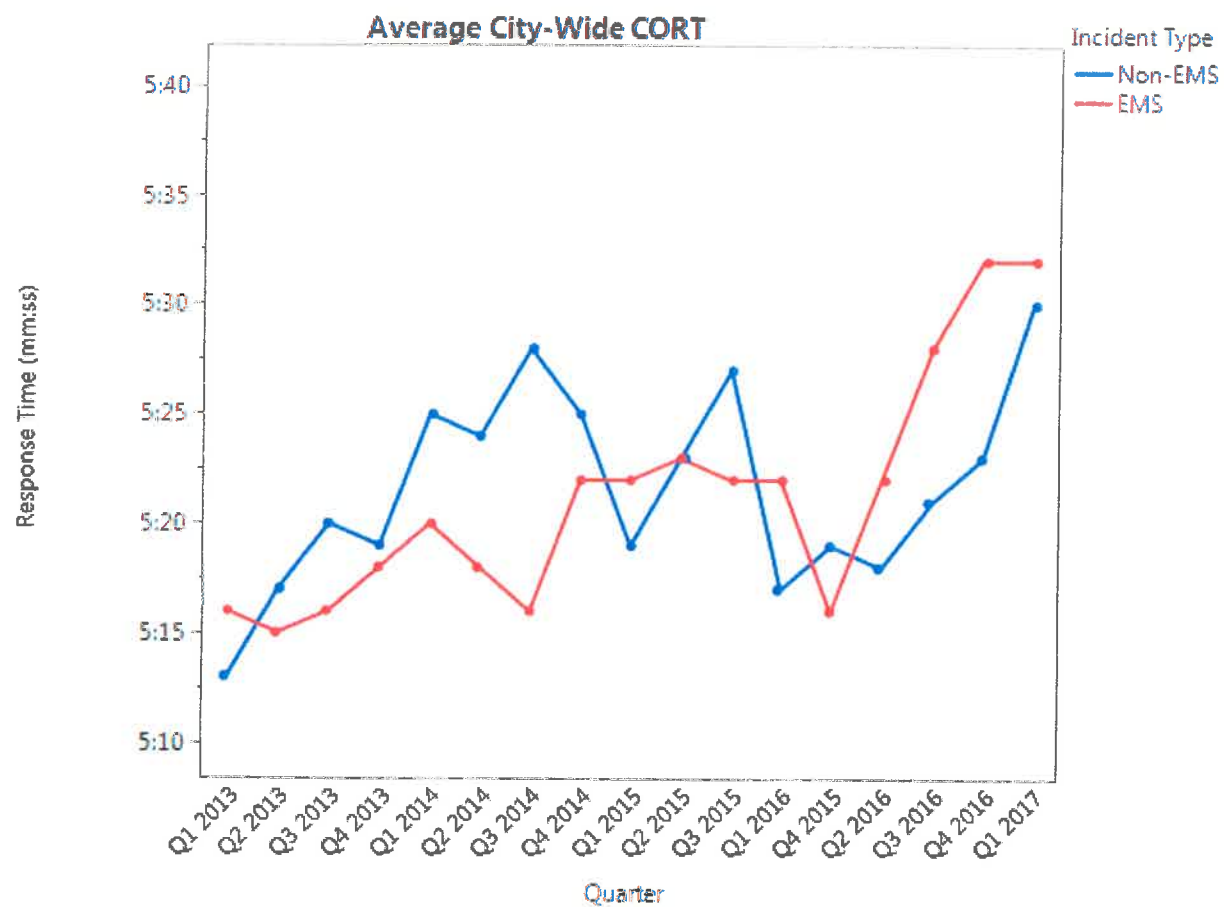
City-Wide Level Data



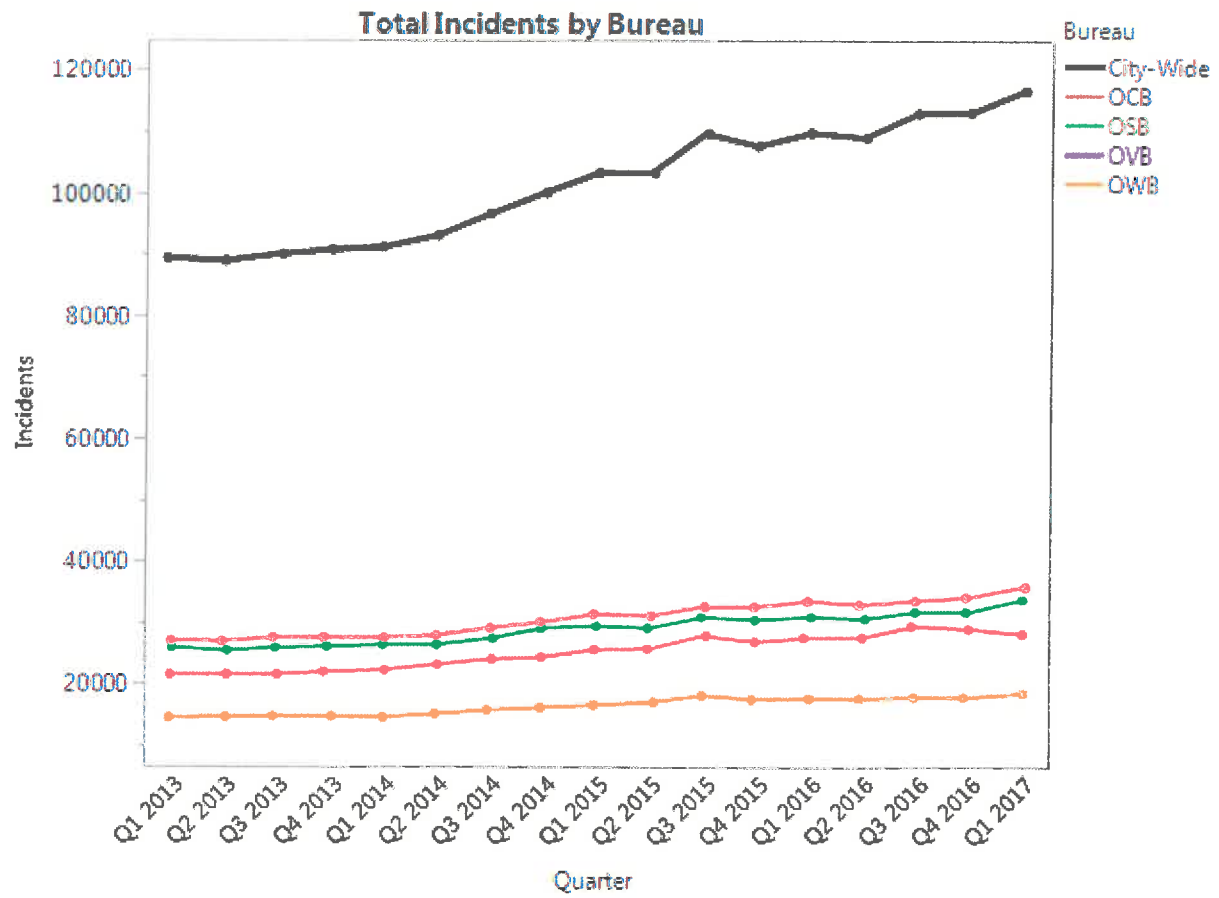


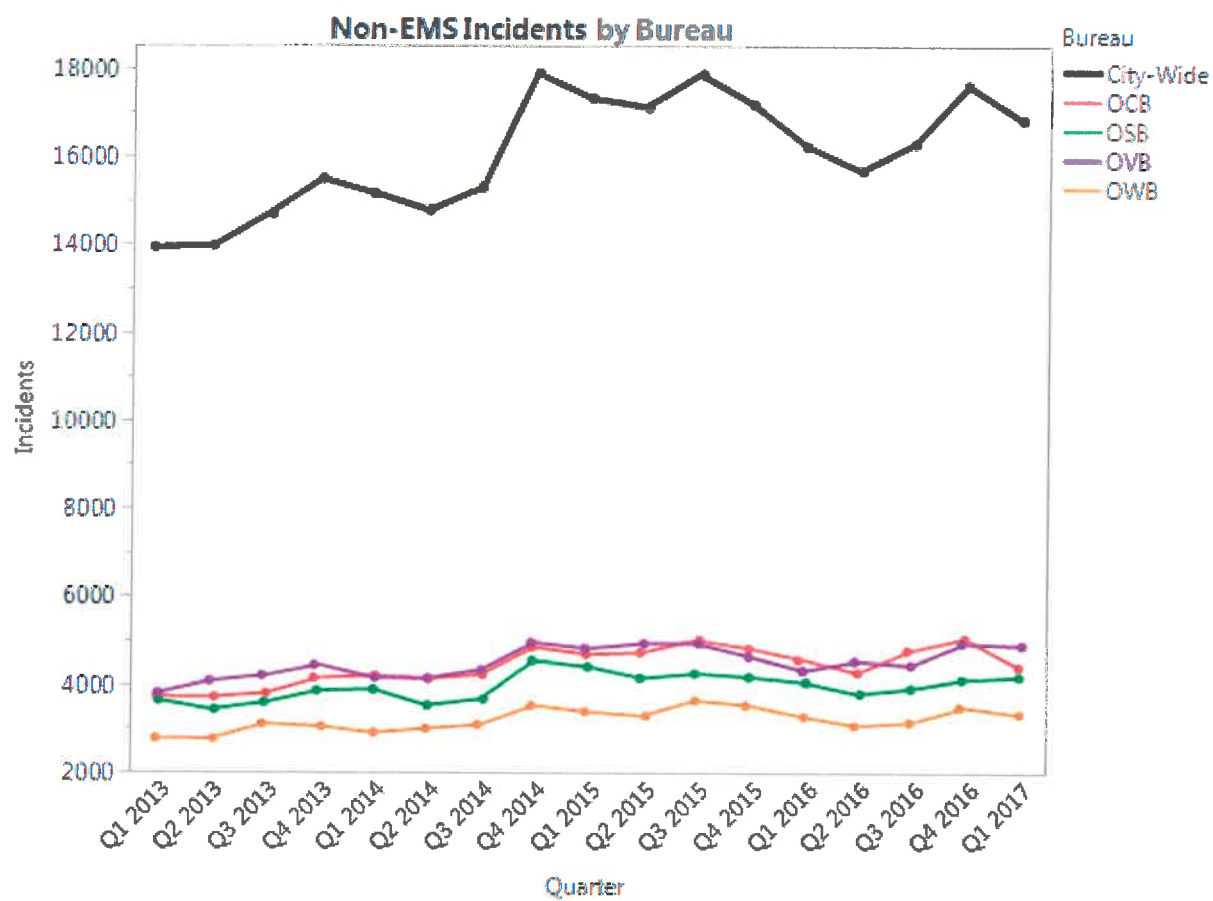


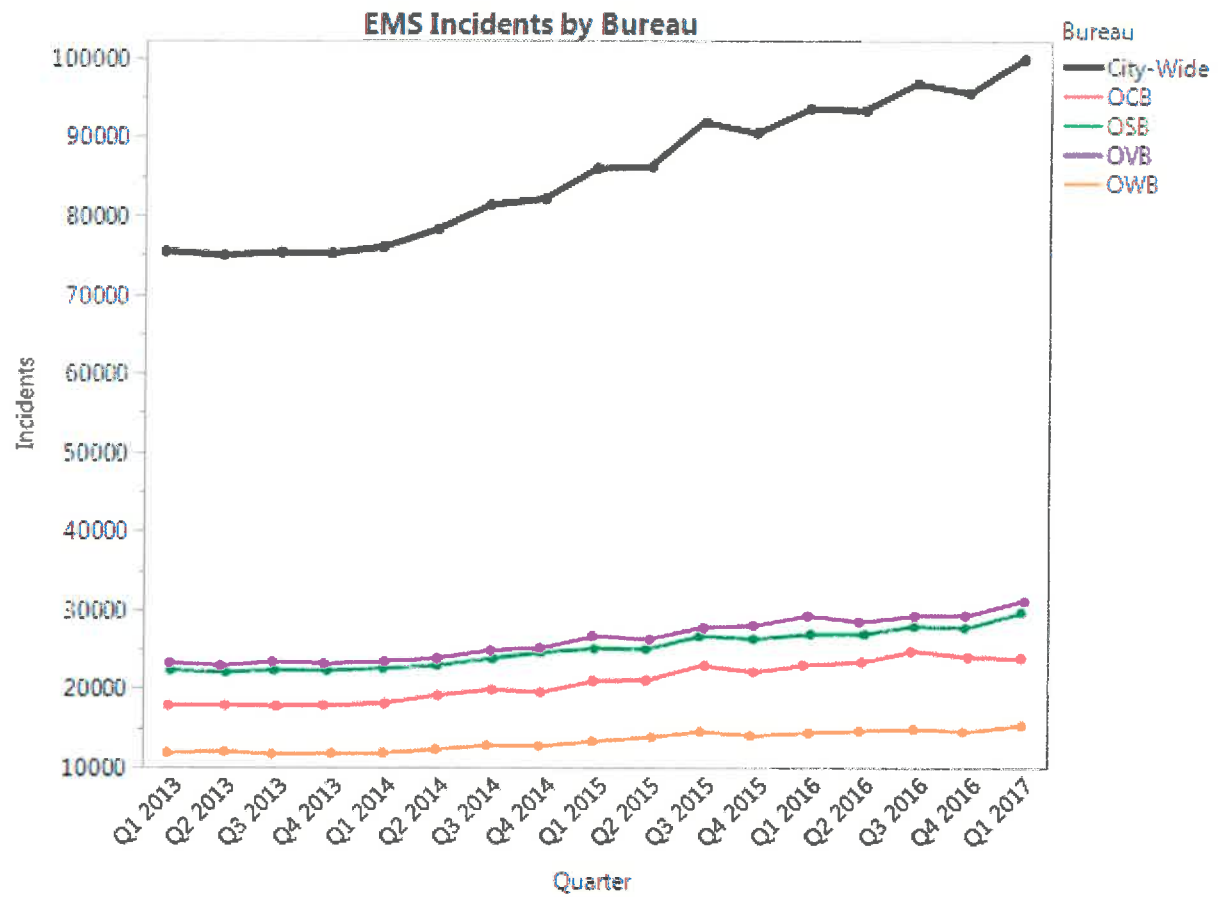


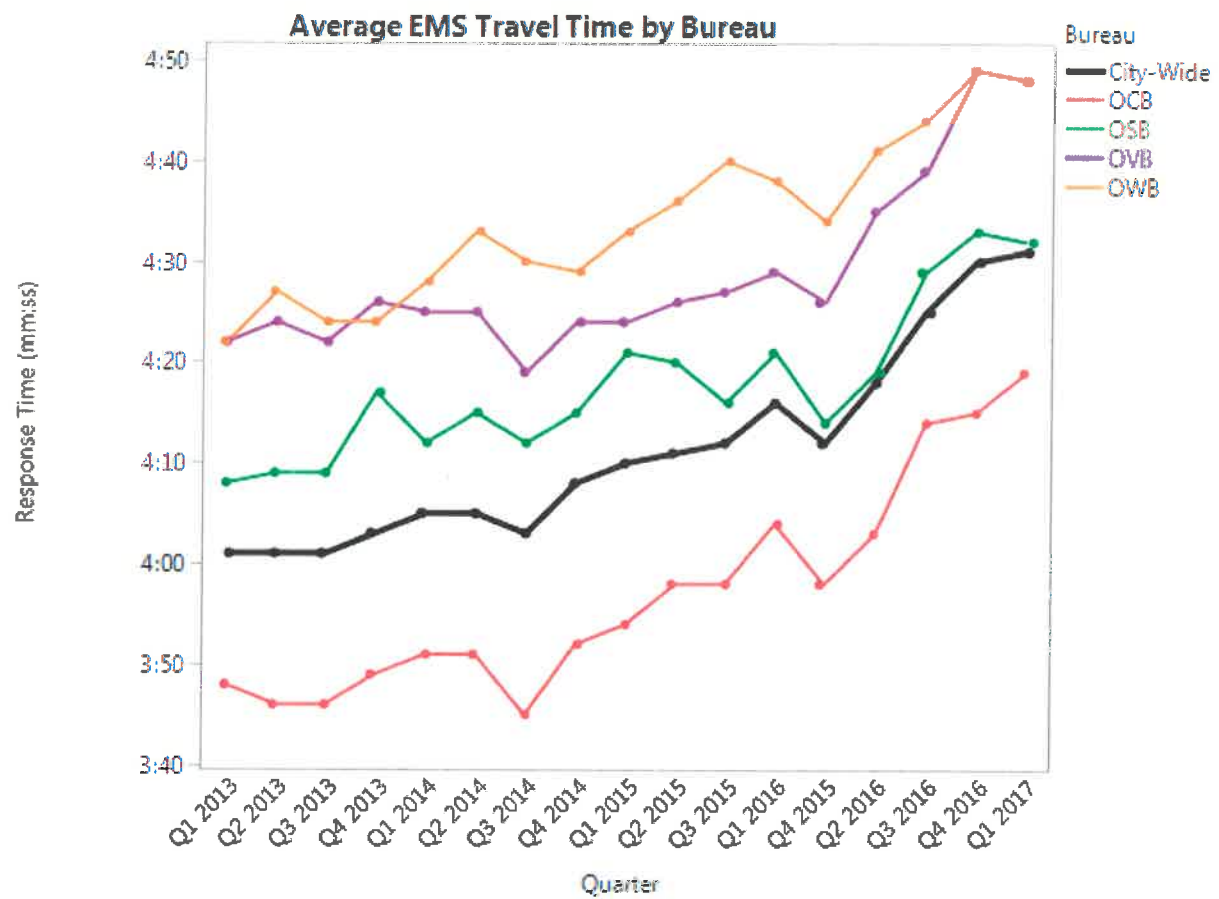


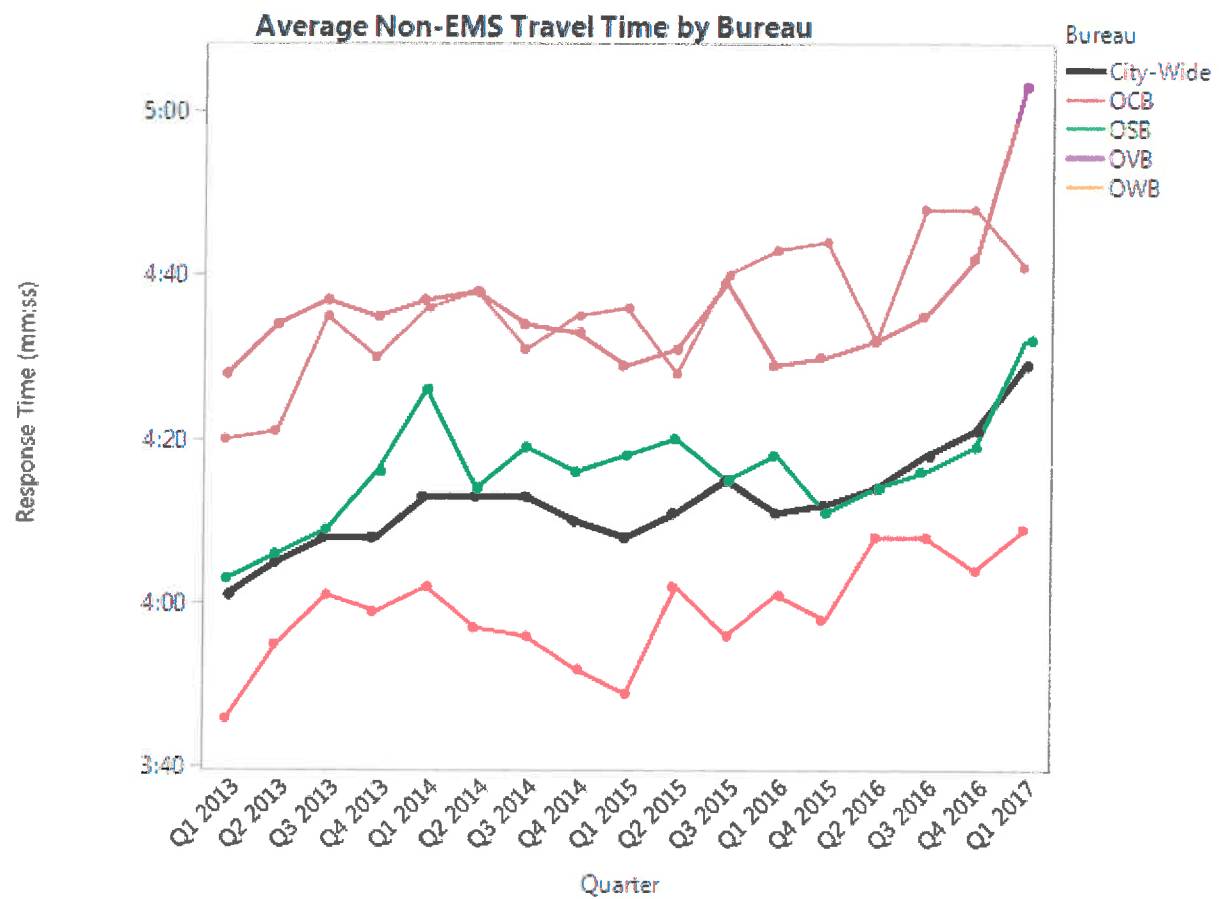
Bureau-Level Data

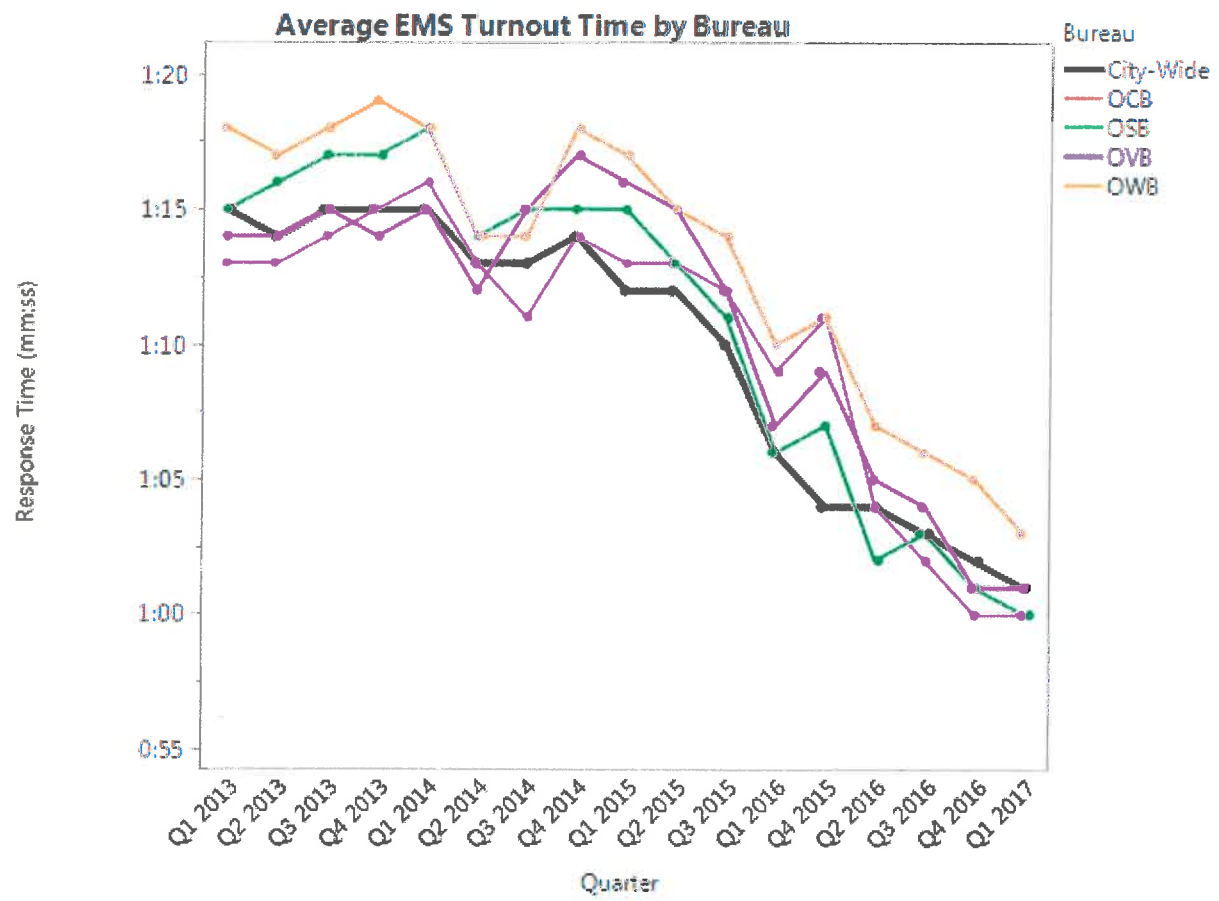


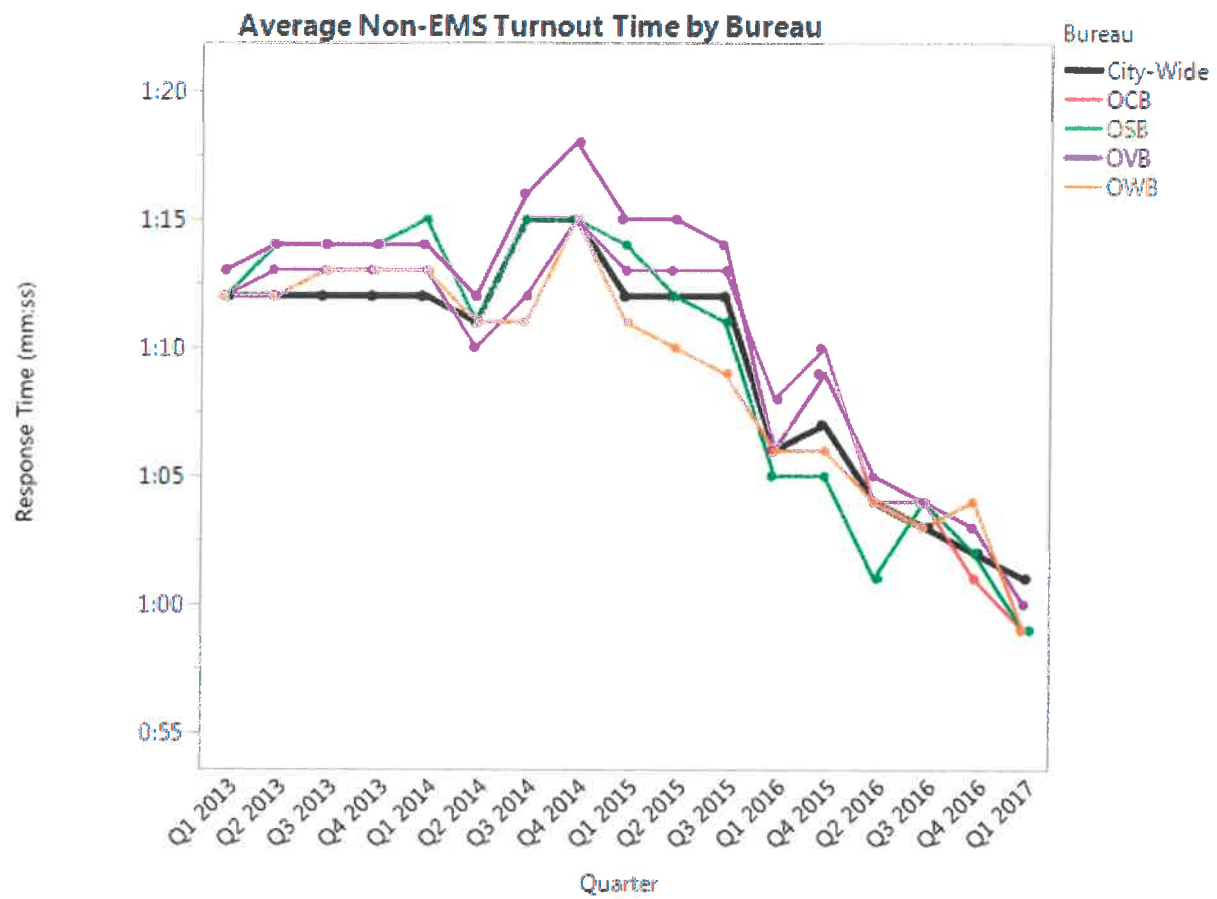


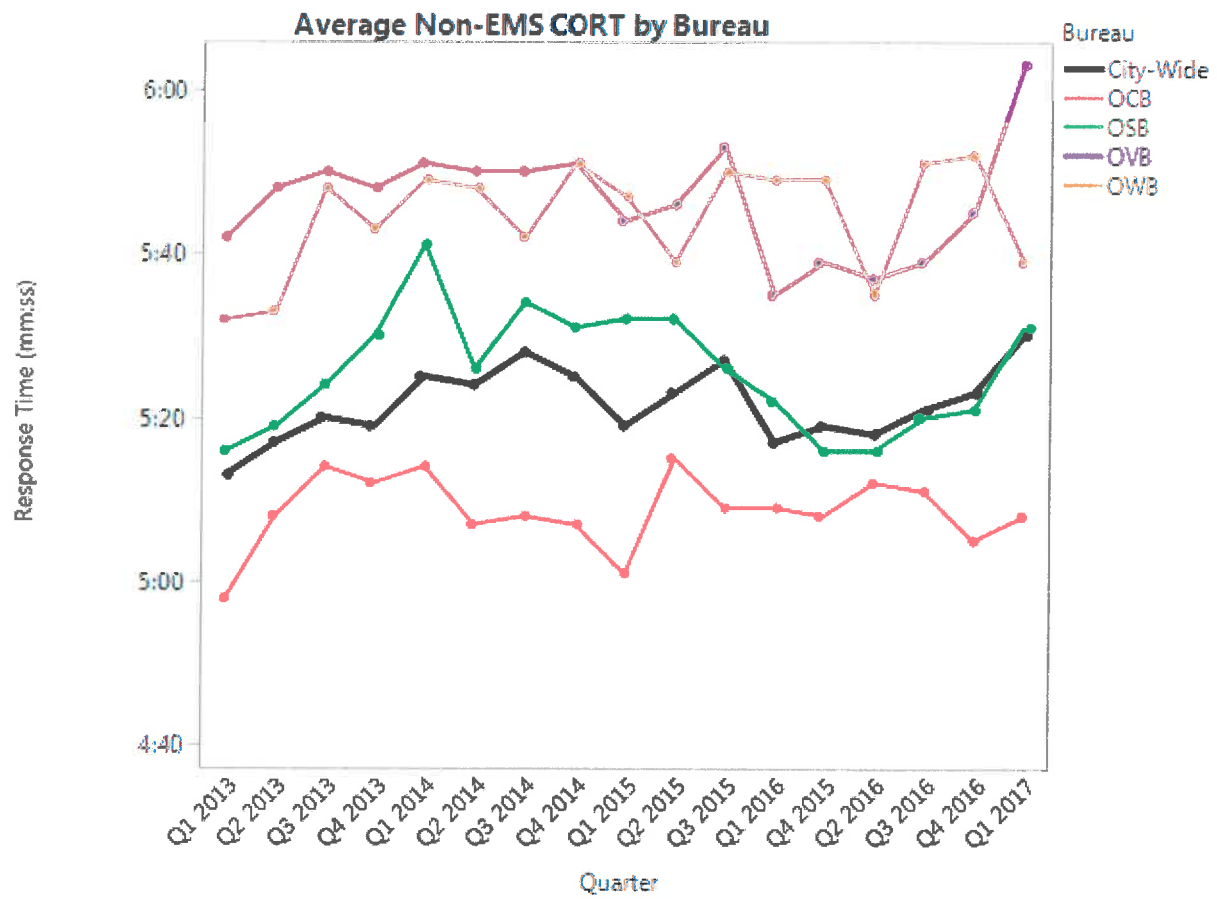


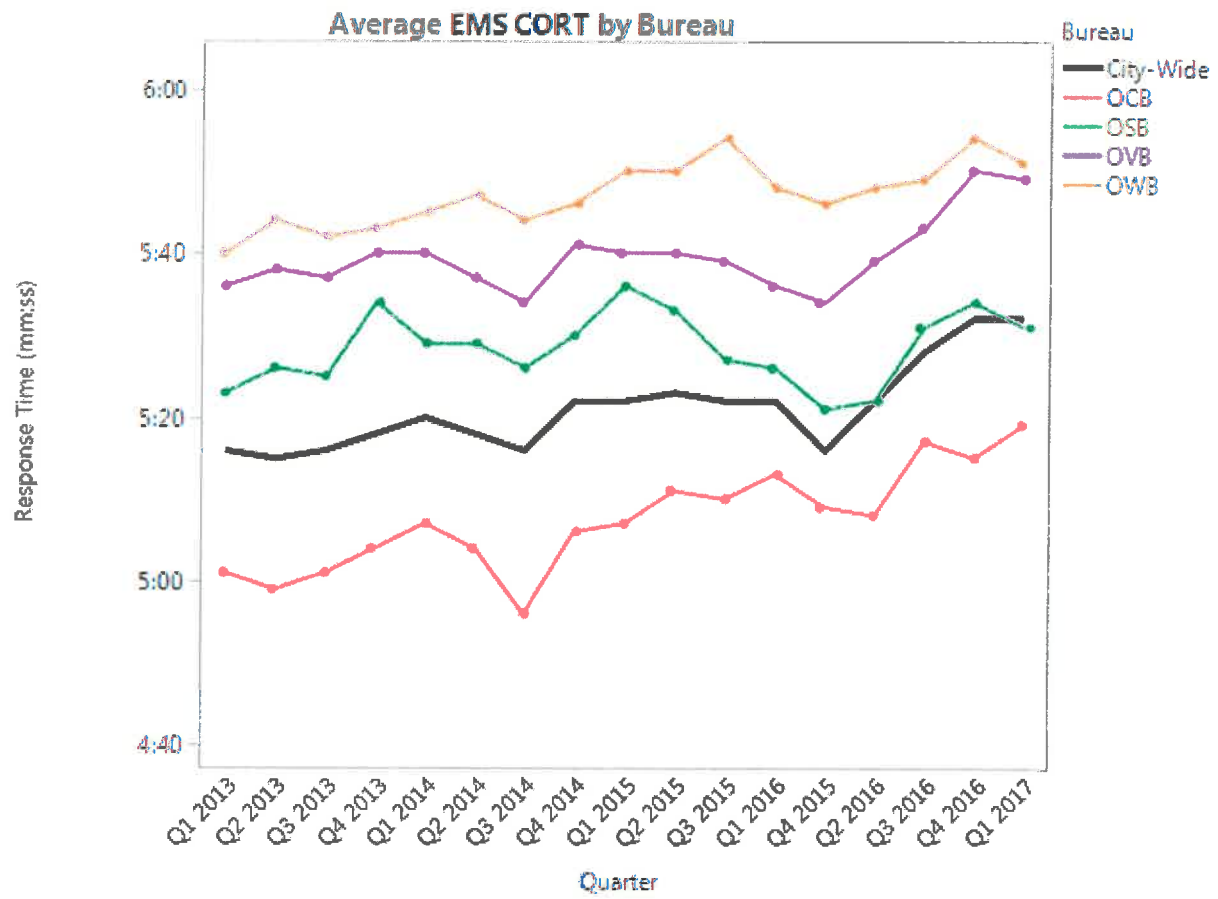




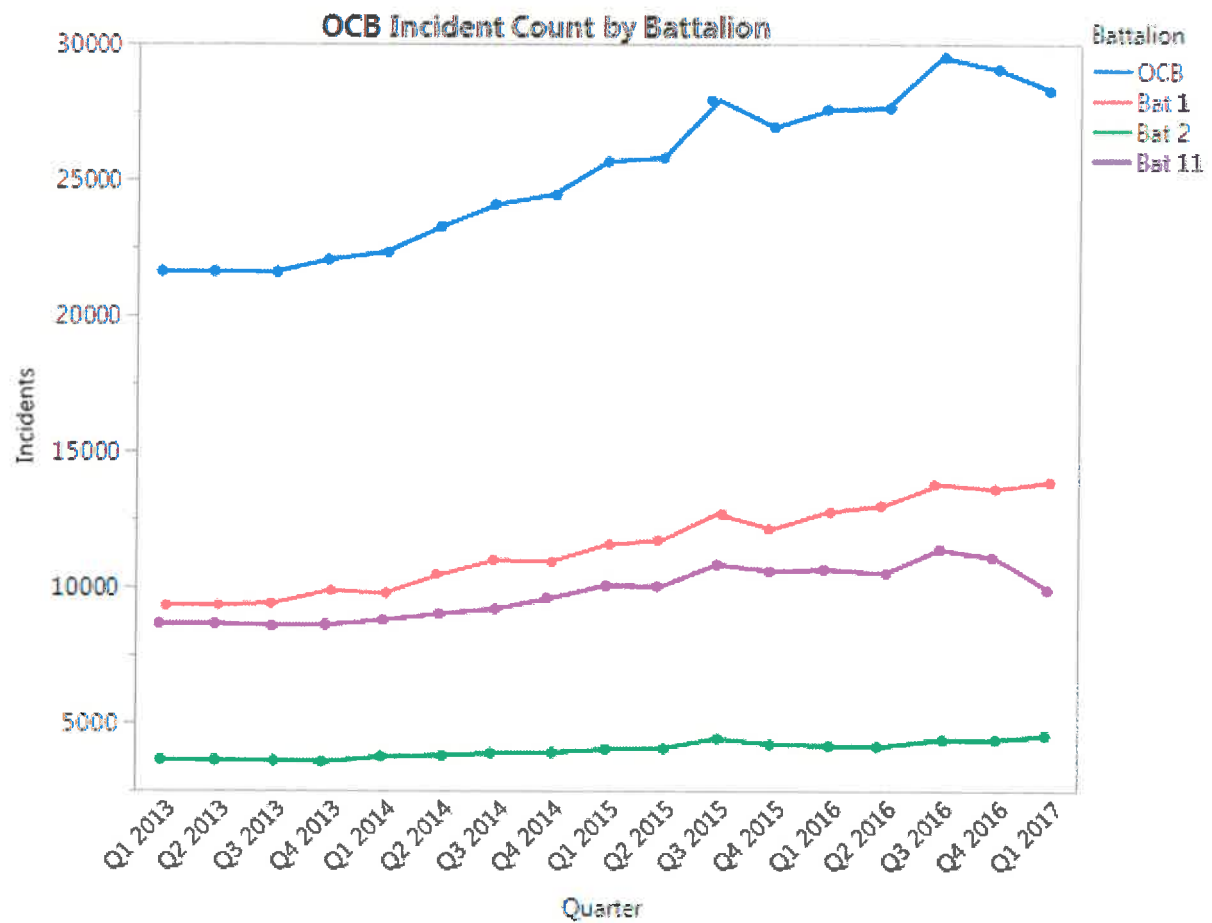


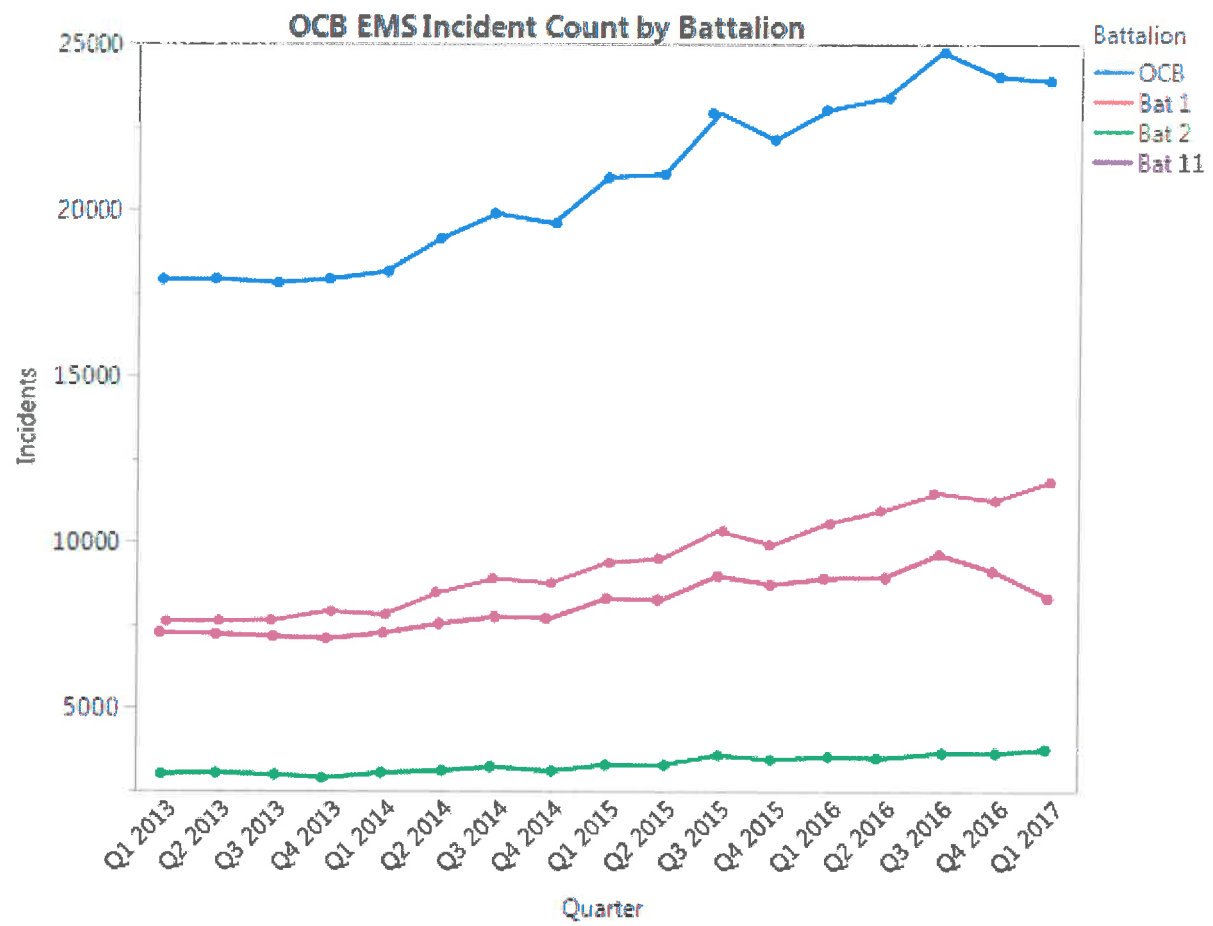


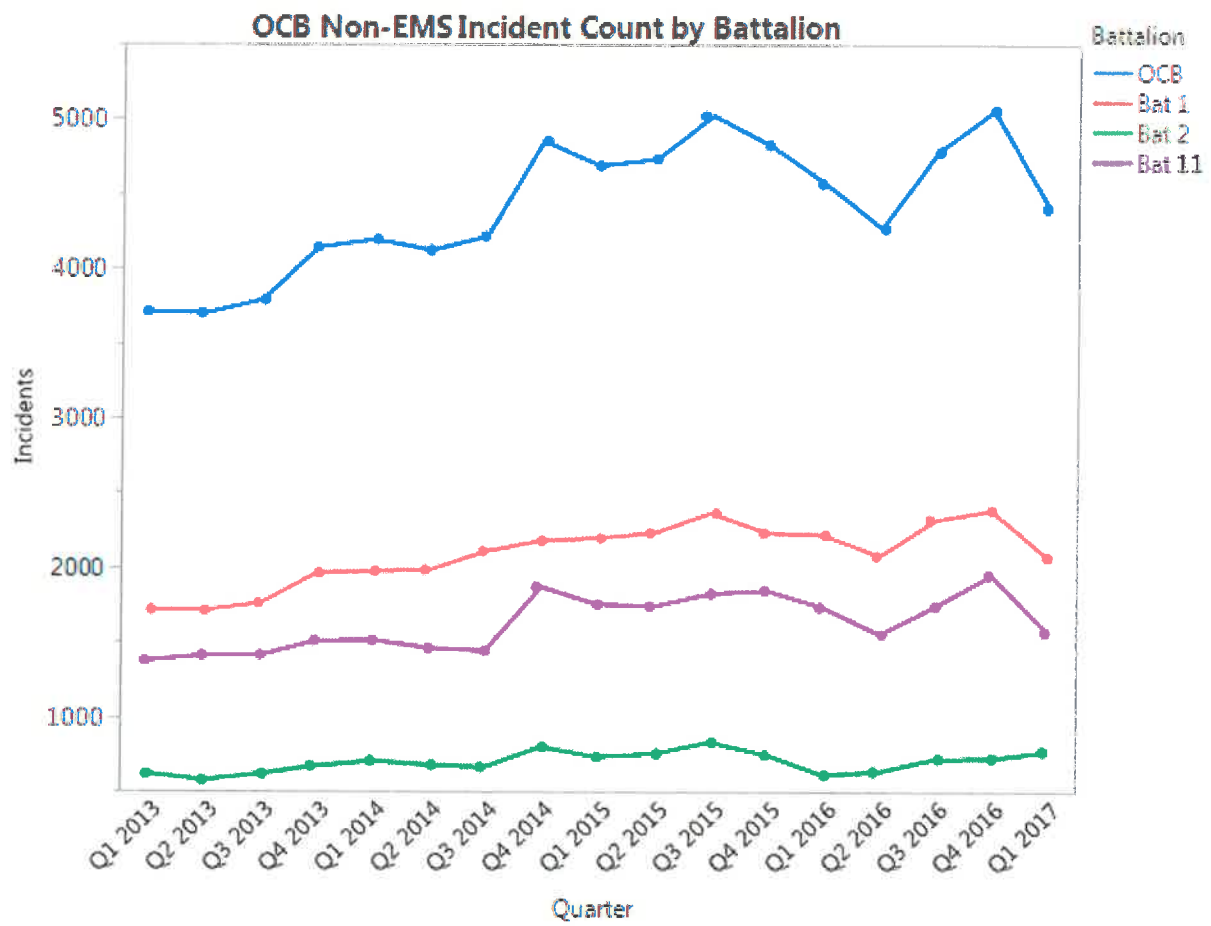


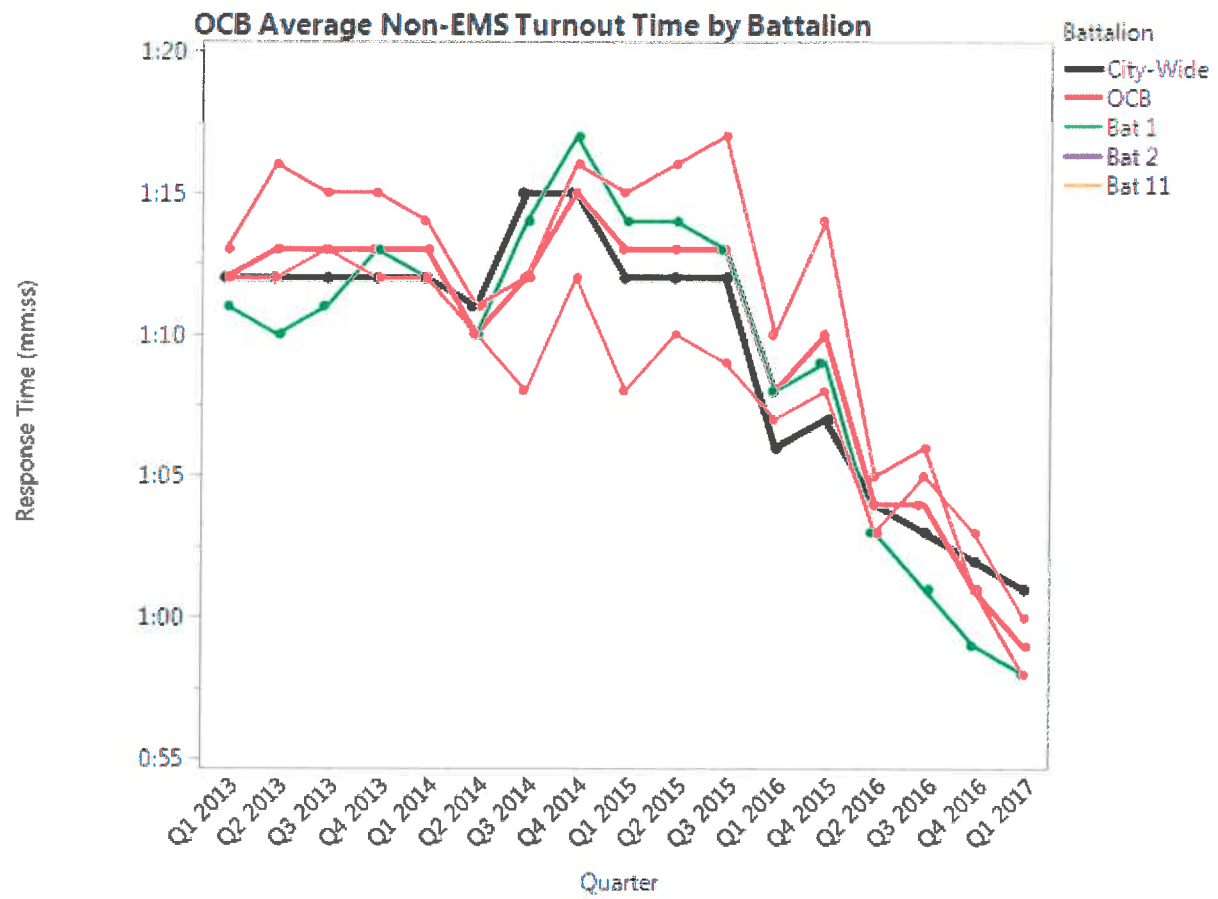


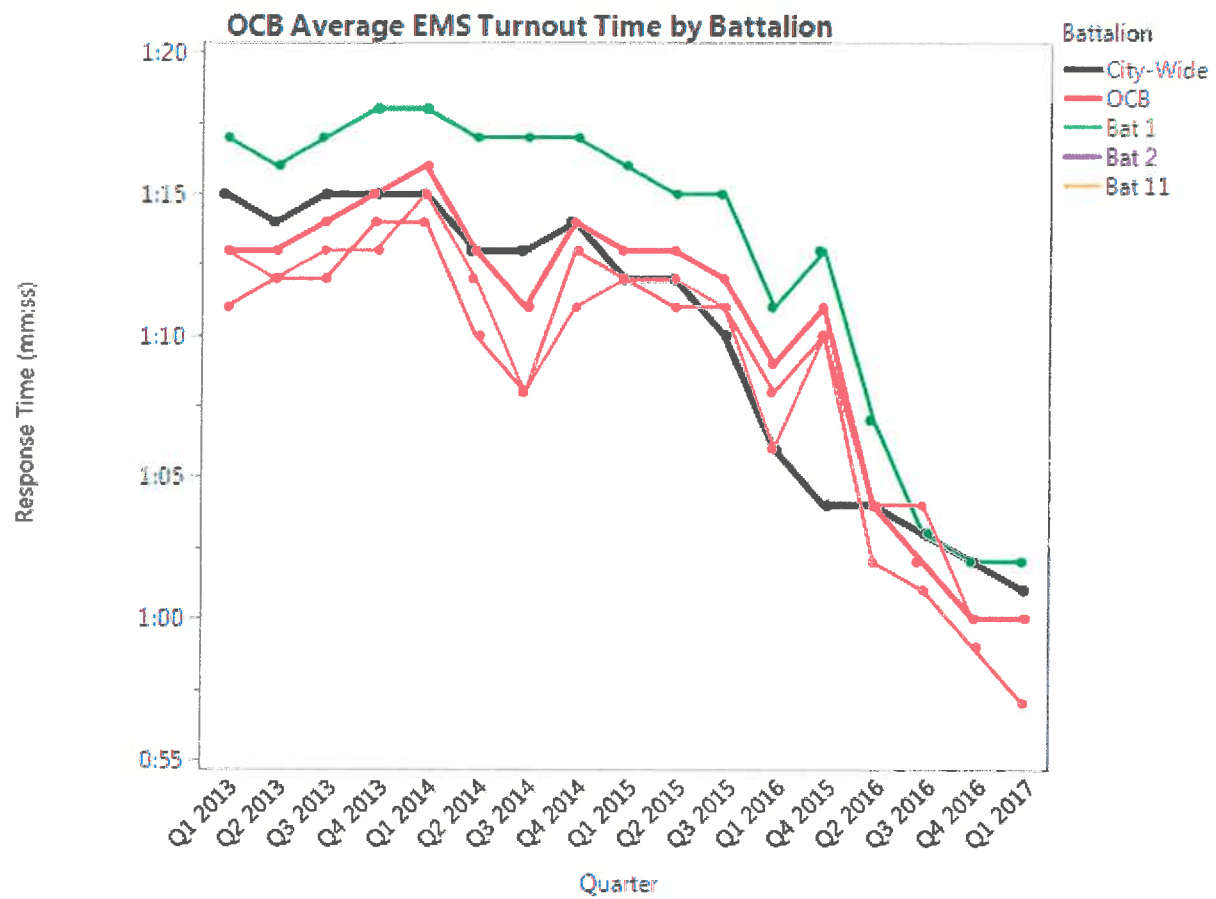
Battalion-Level Data

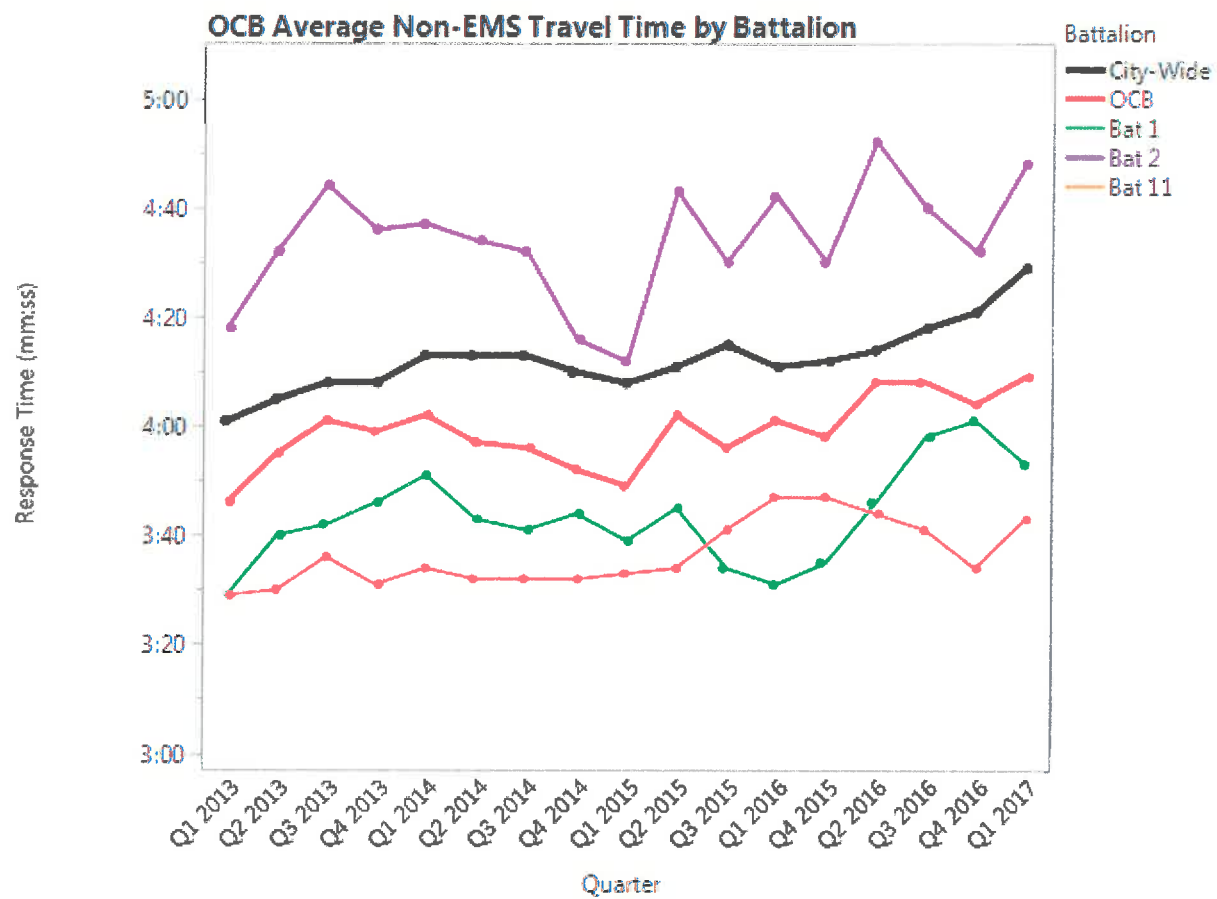


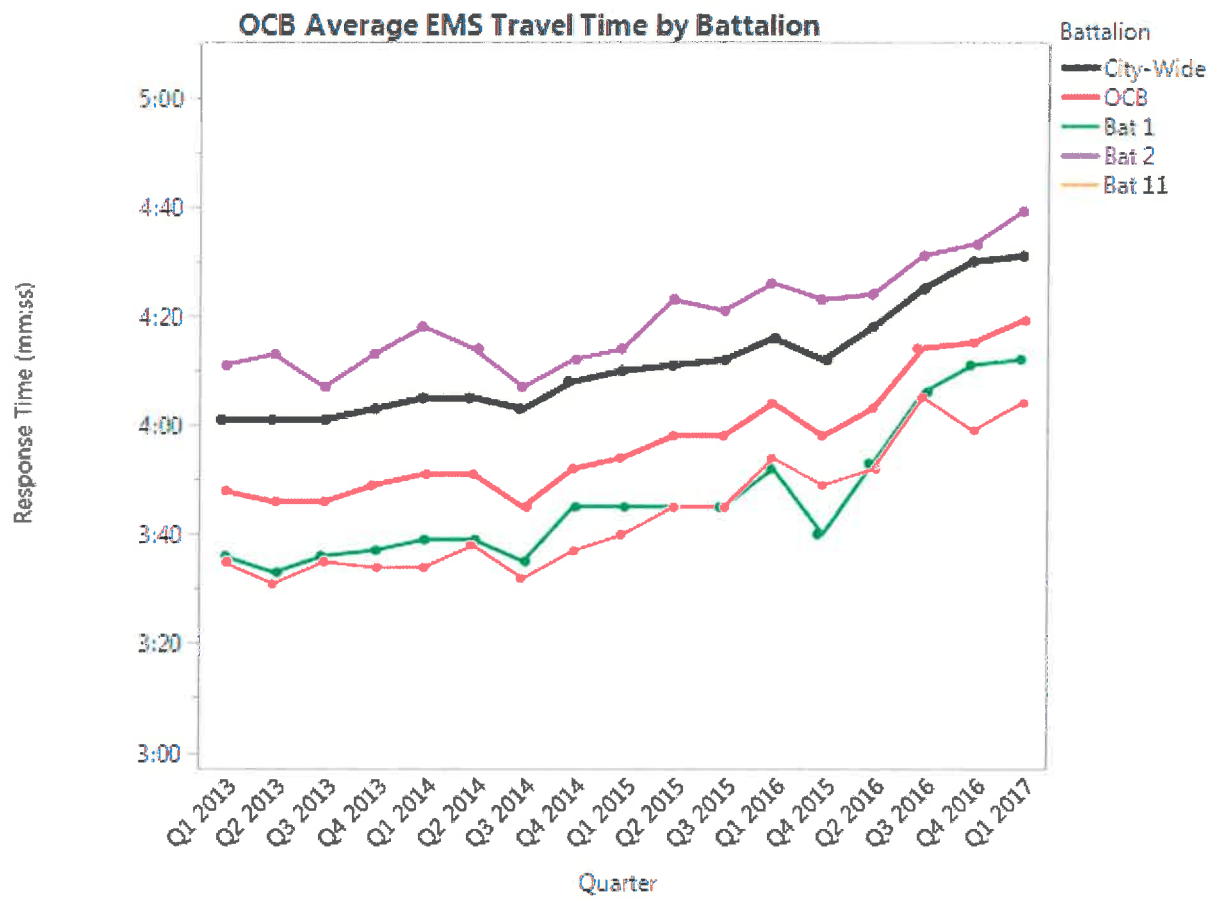


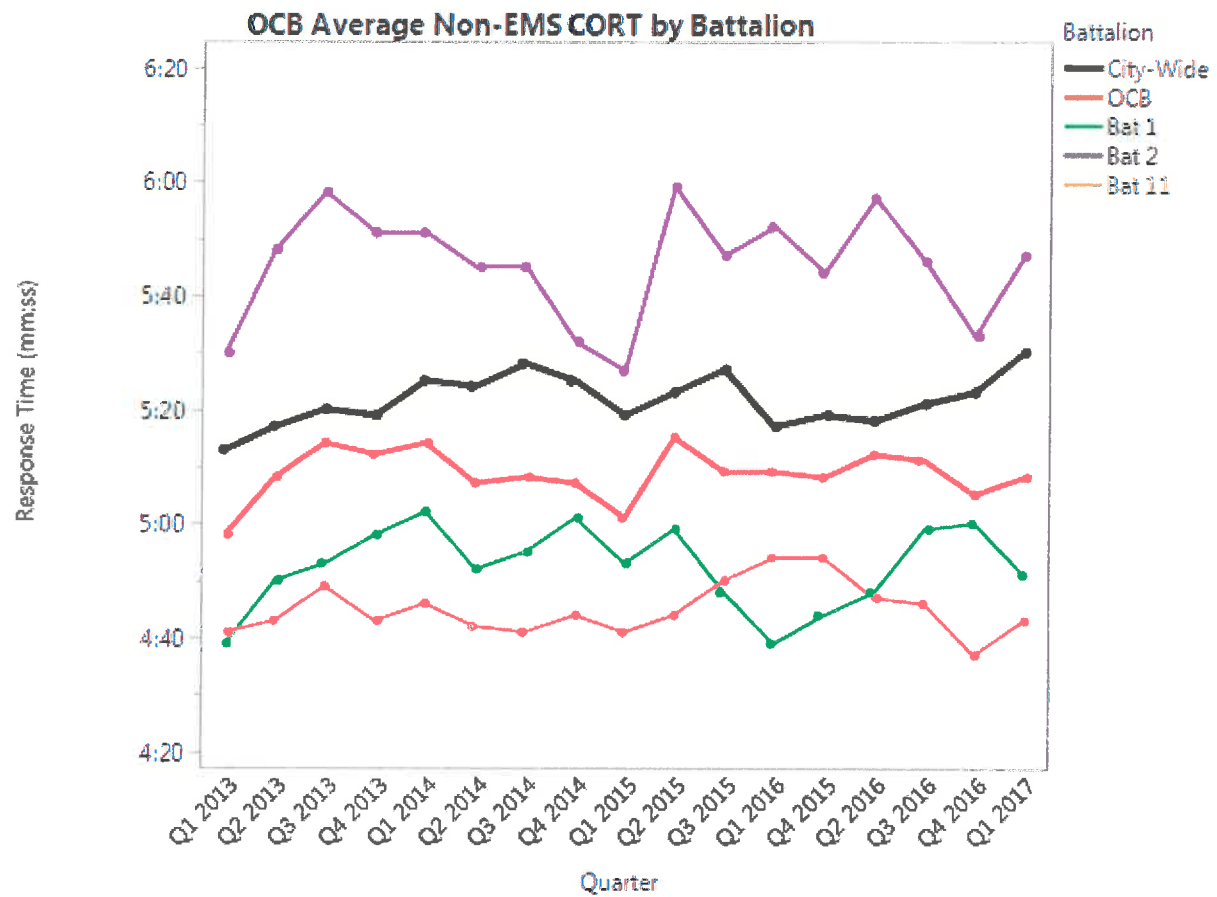


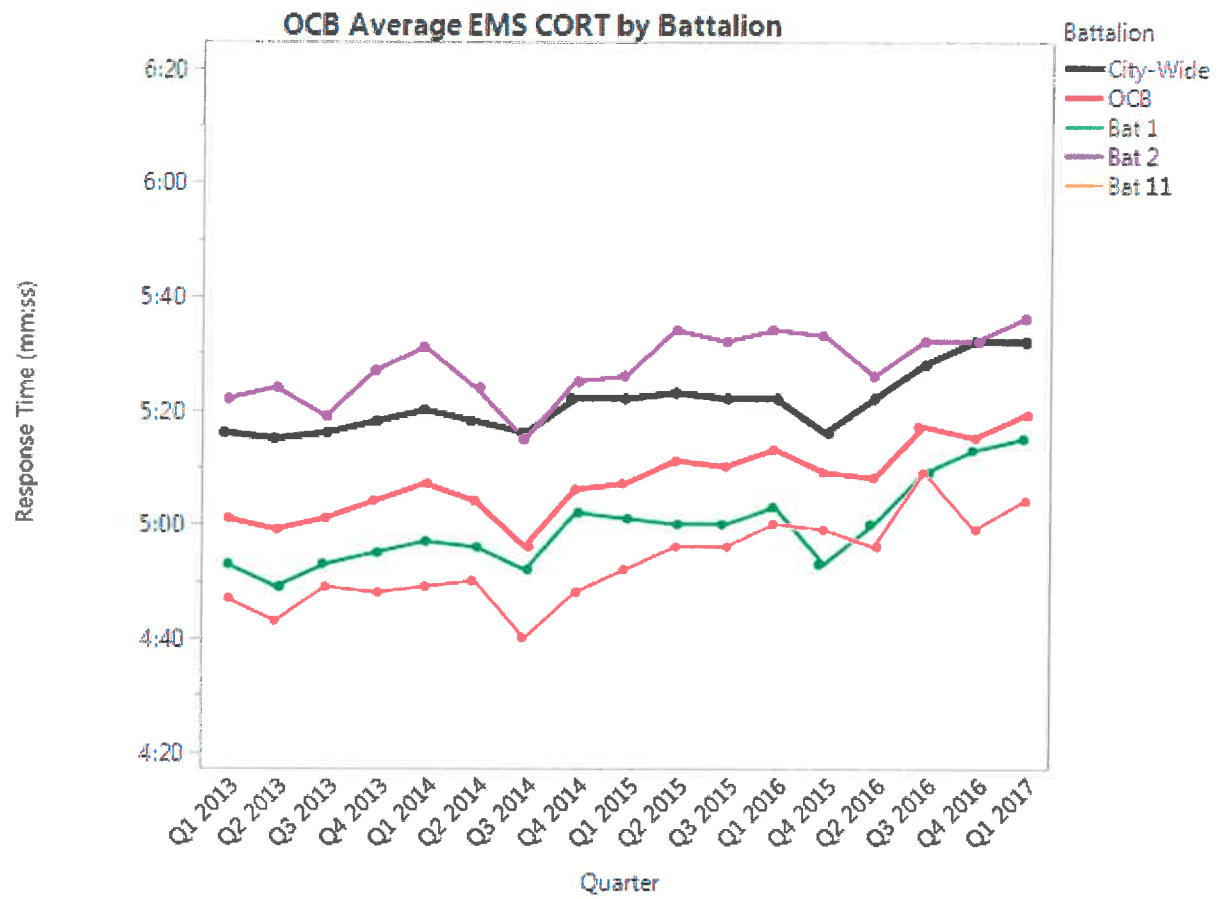


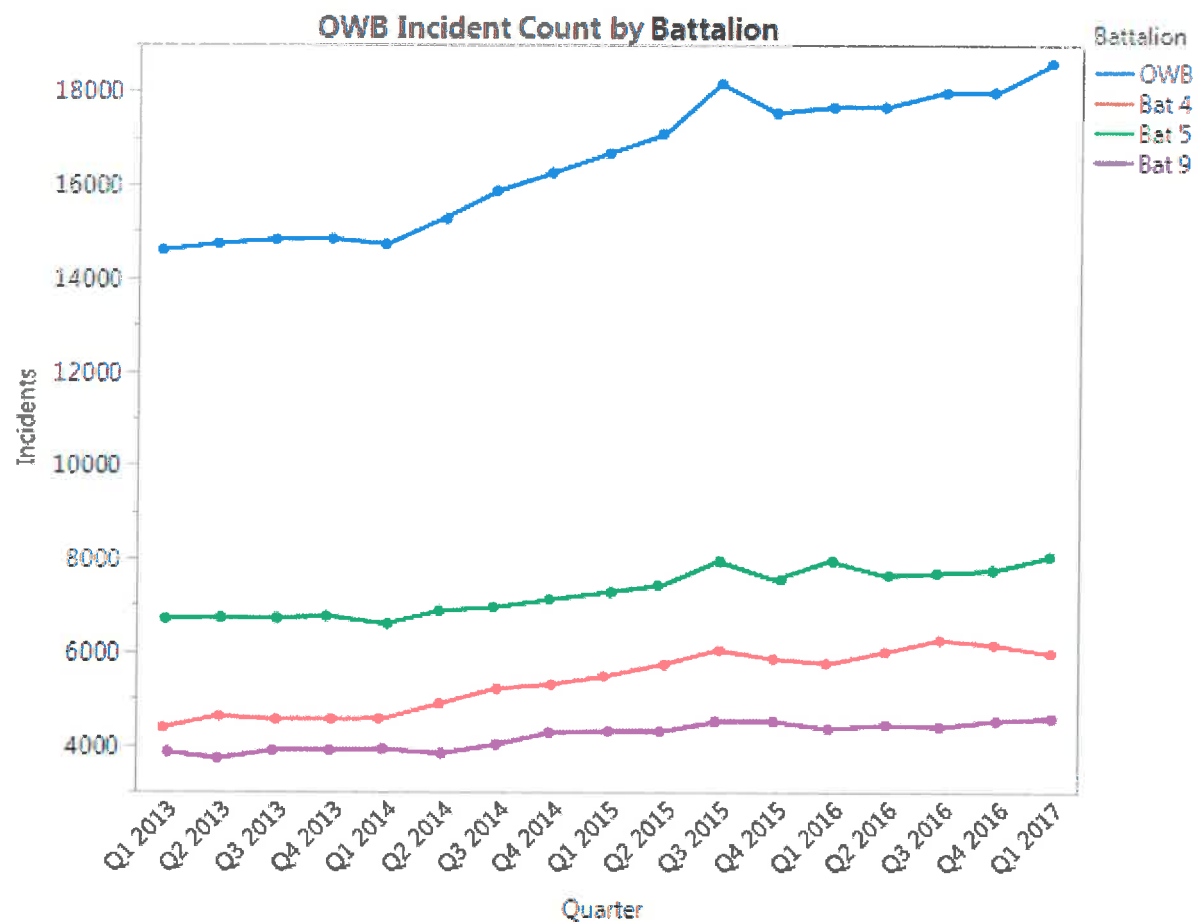


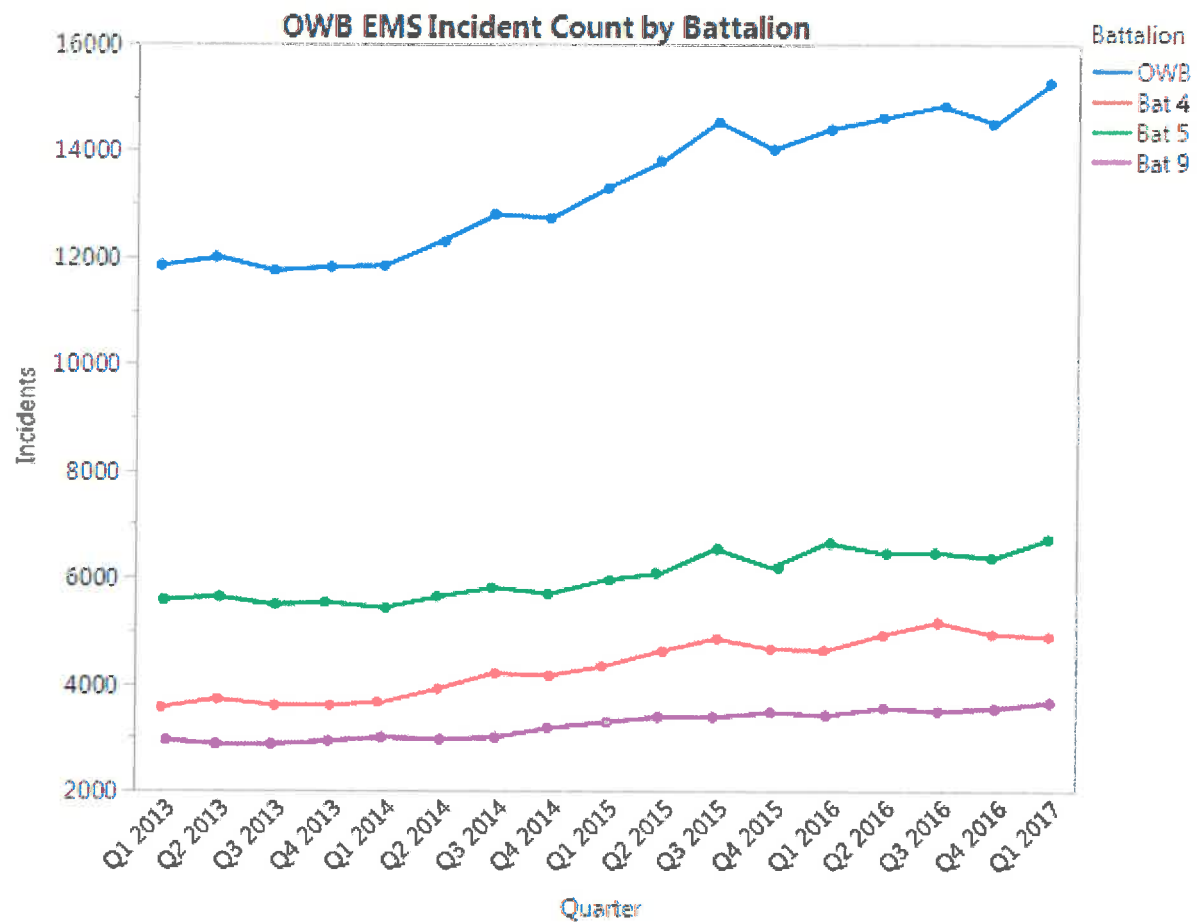


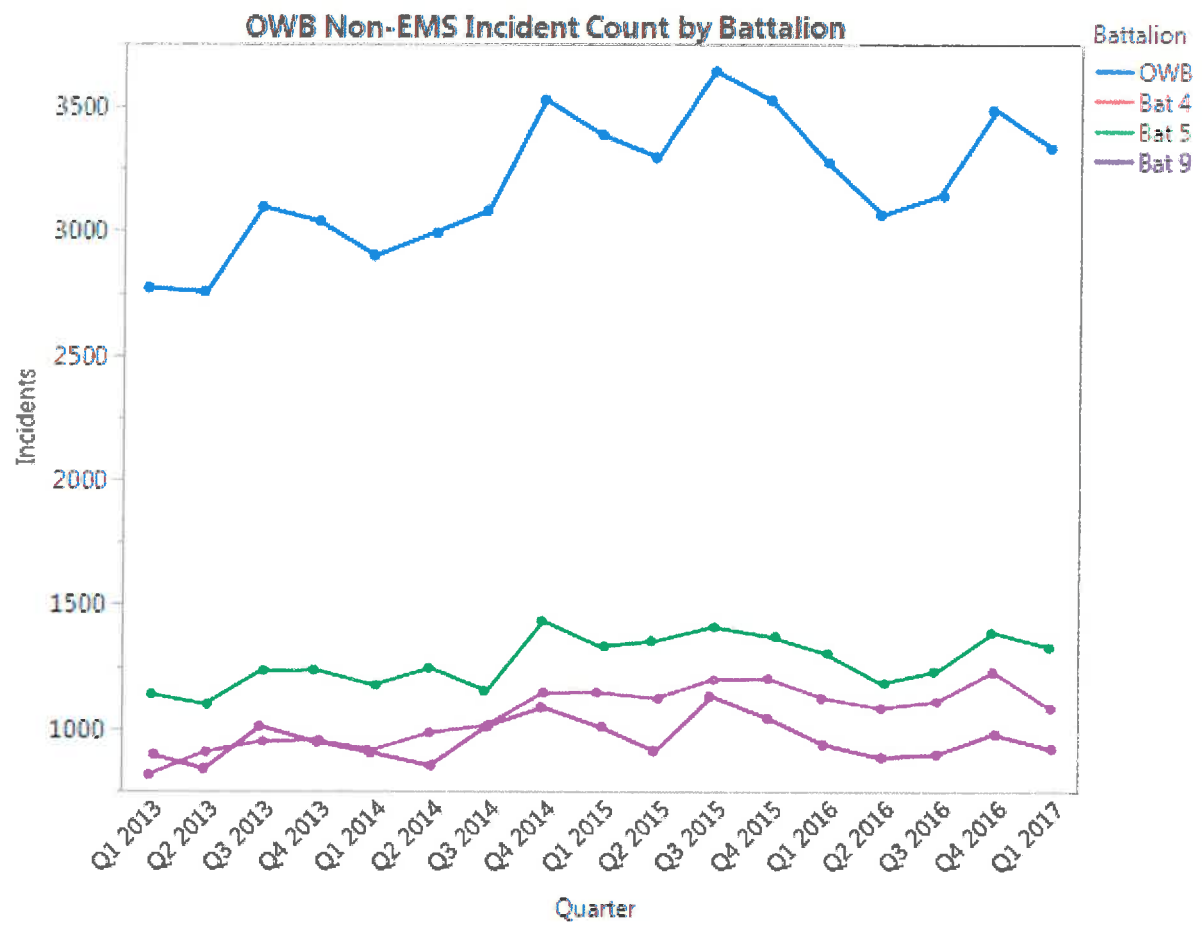


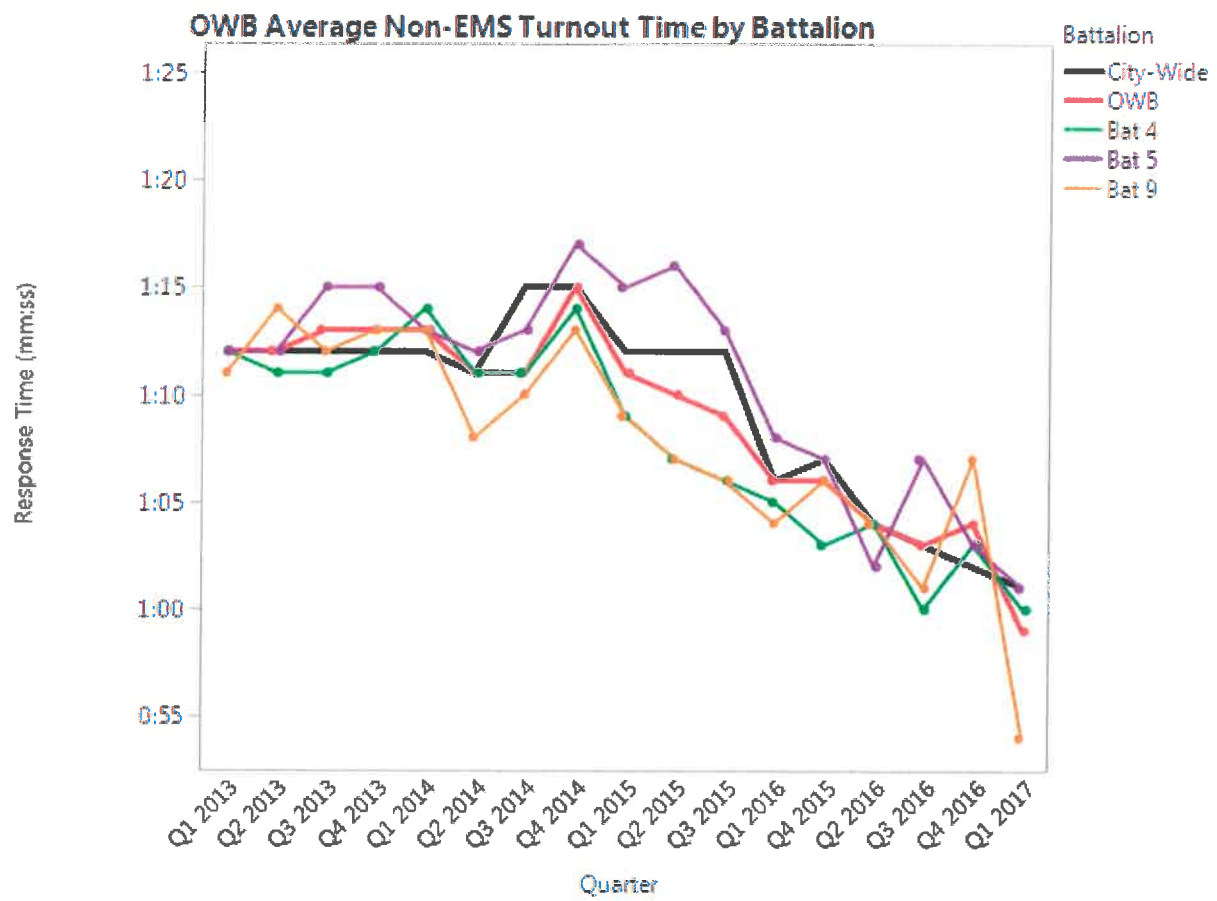


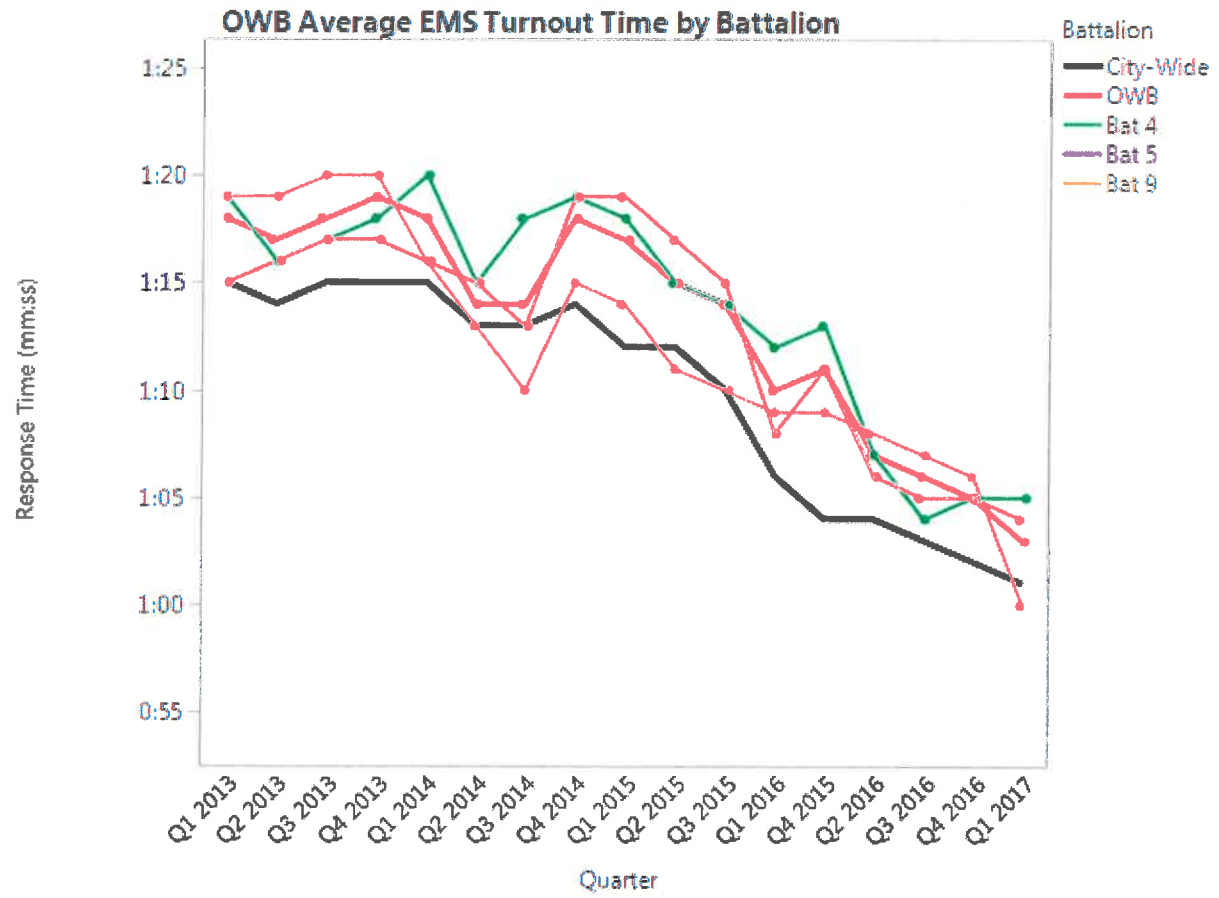


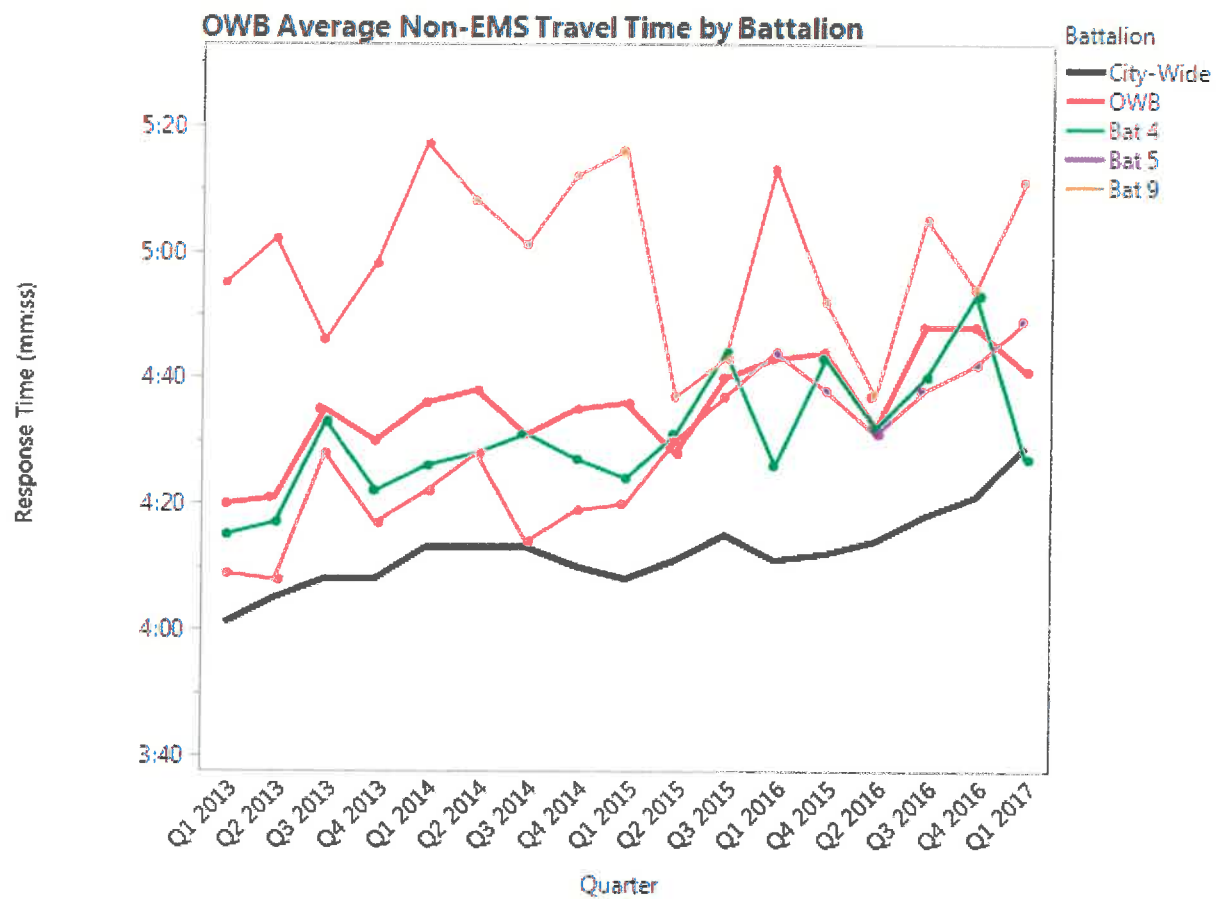


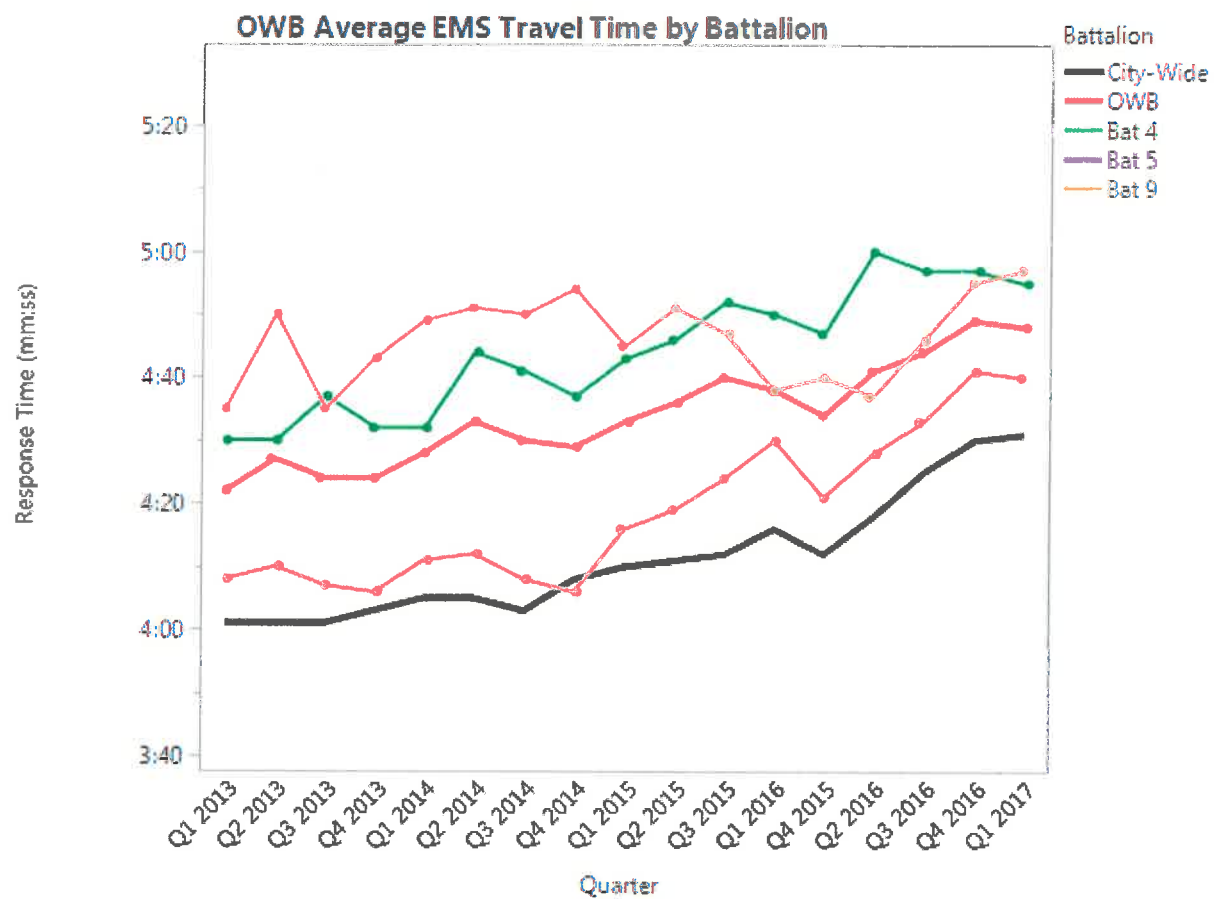


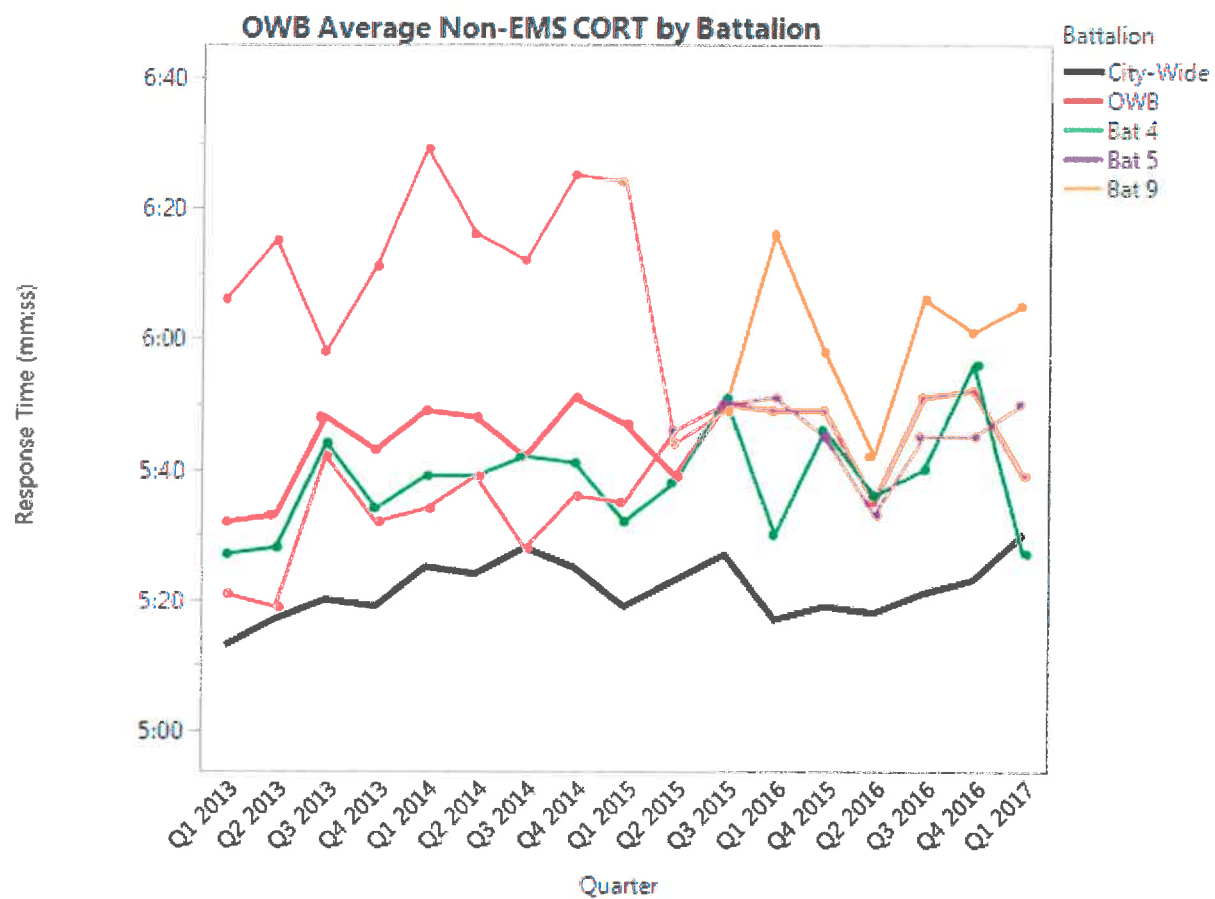


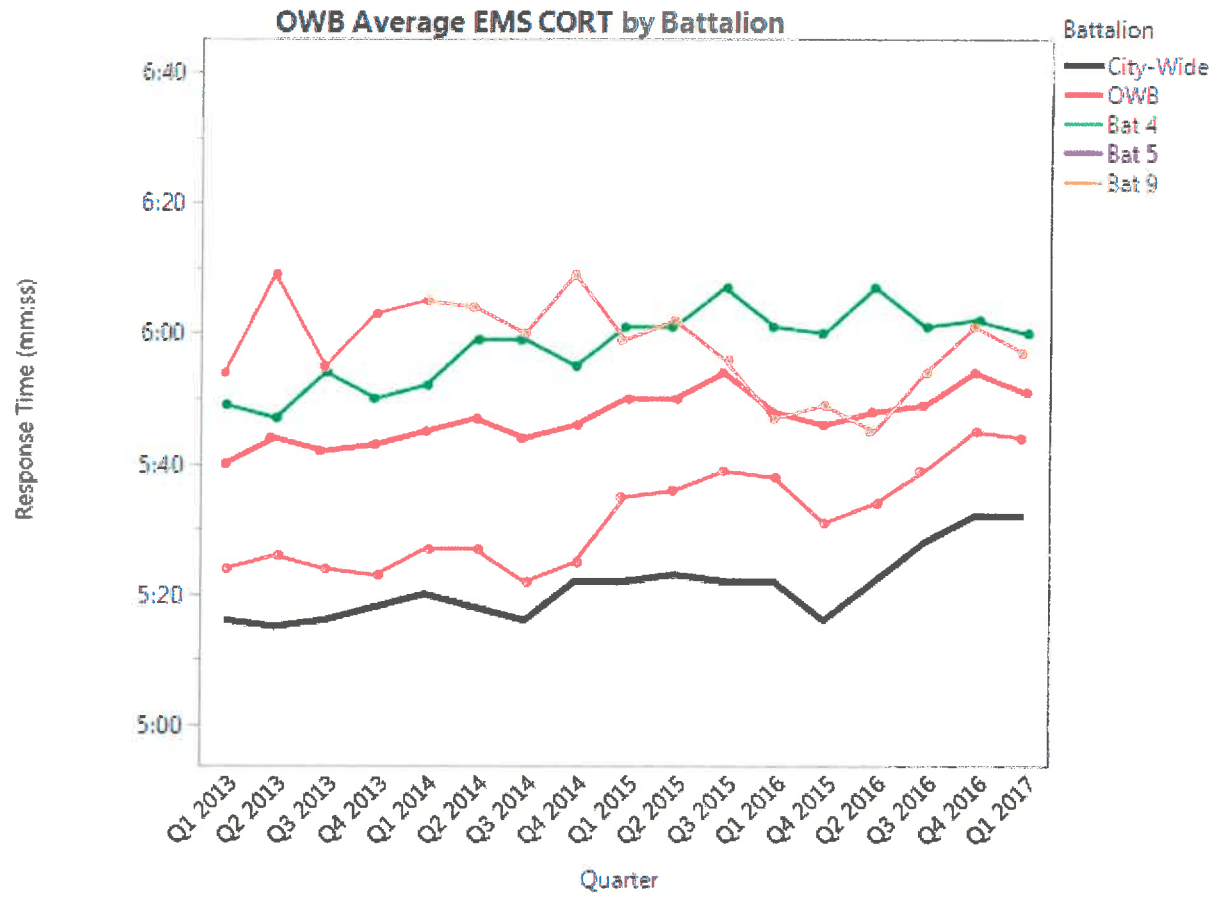


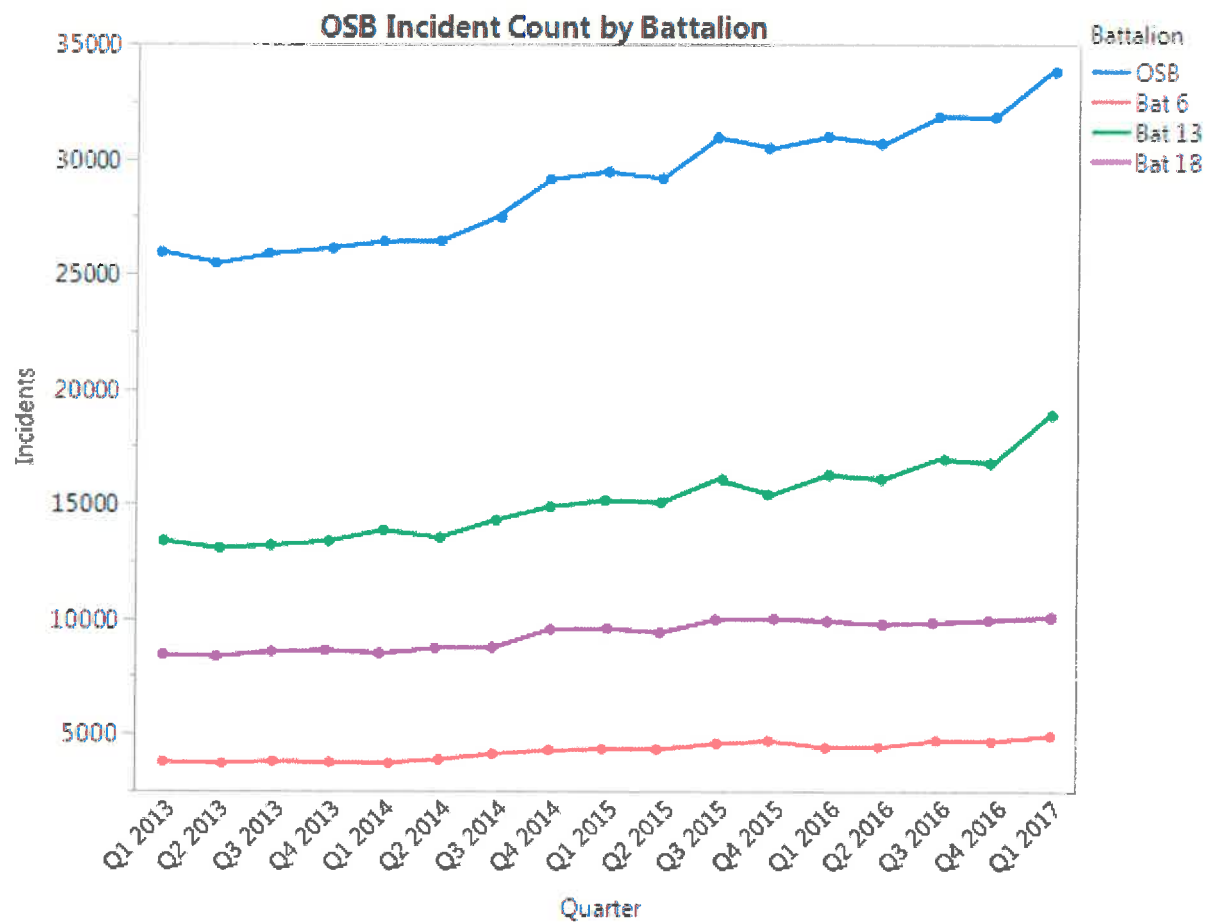


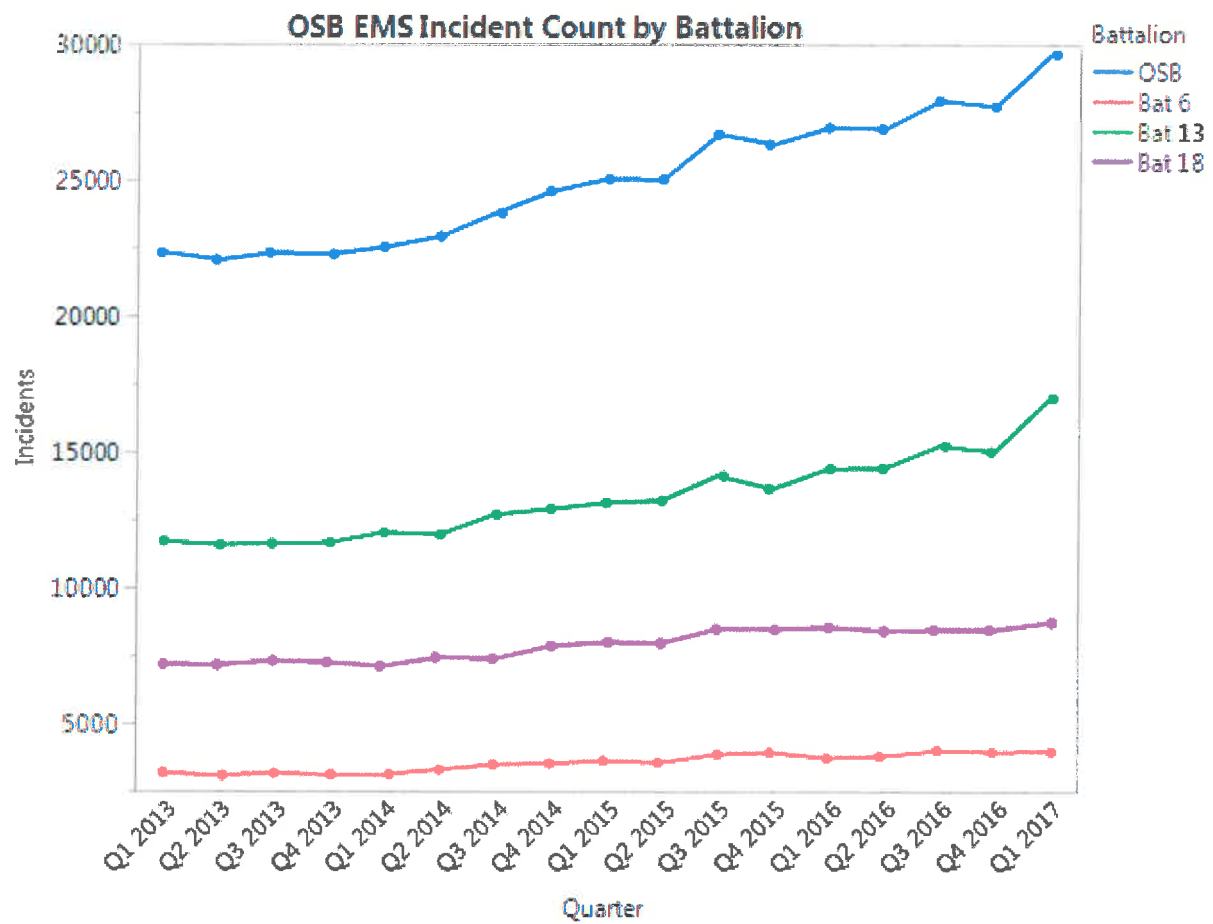


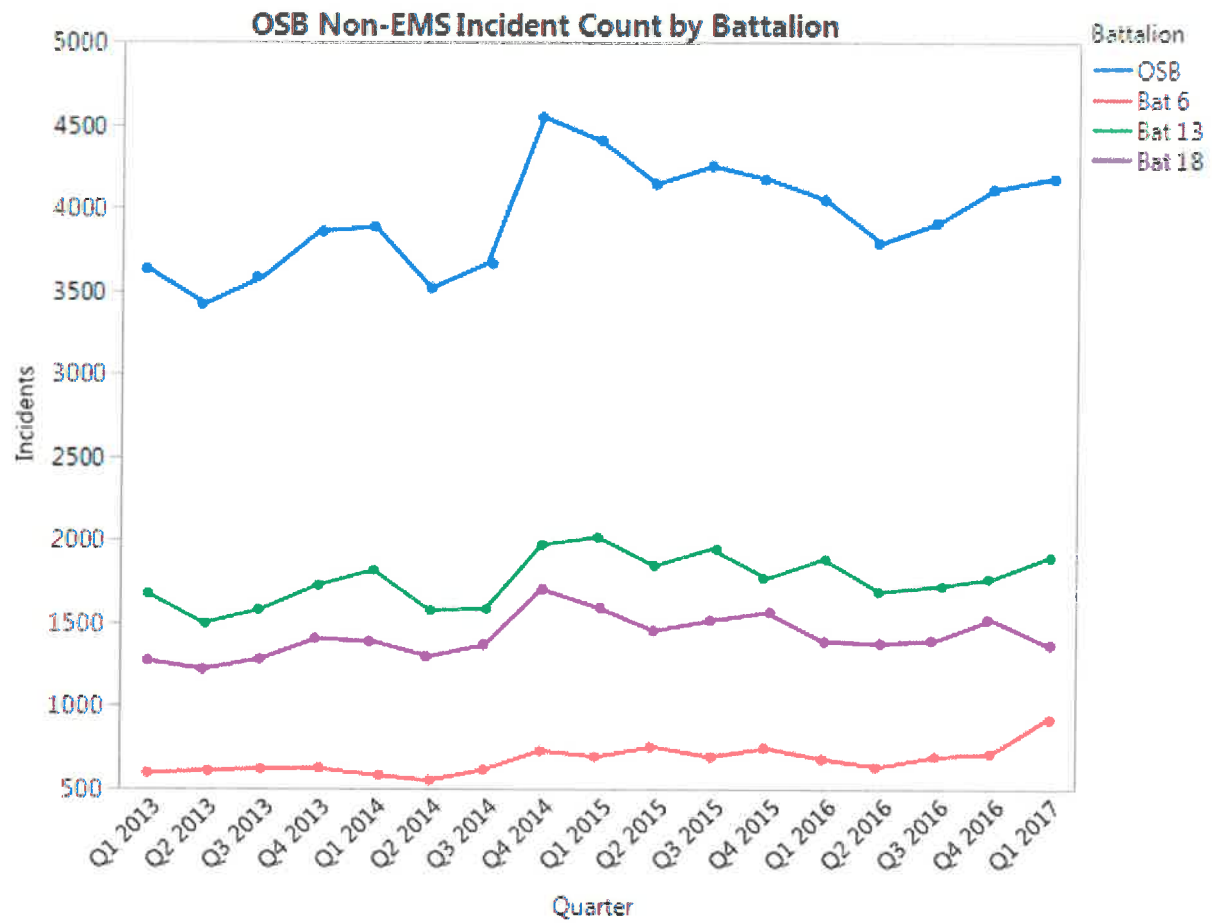


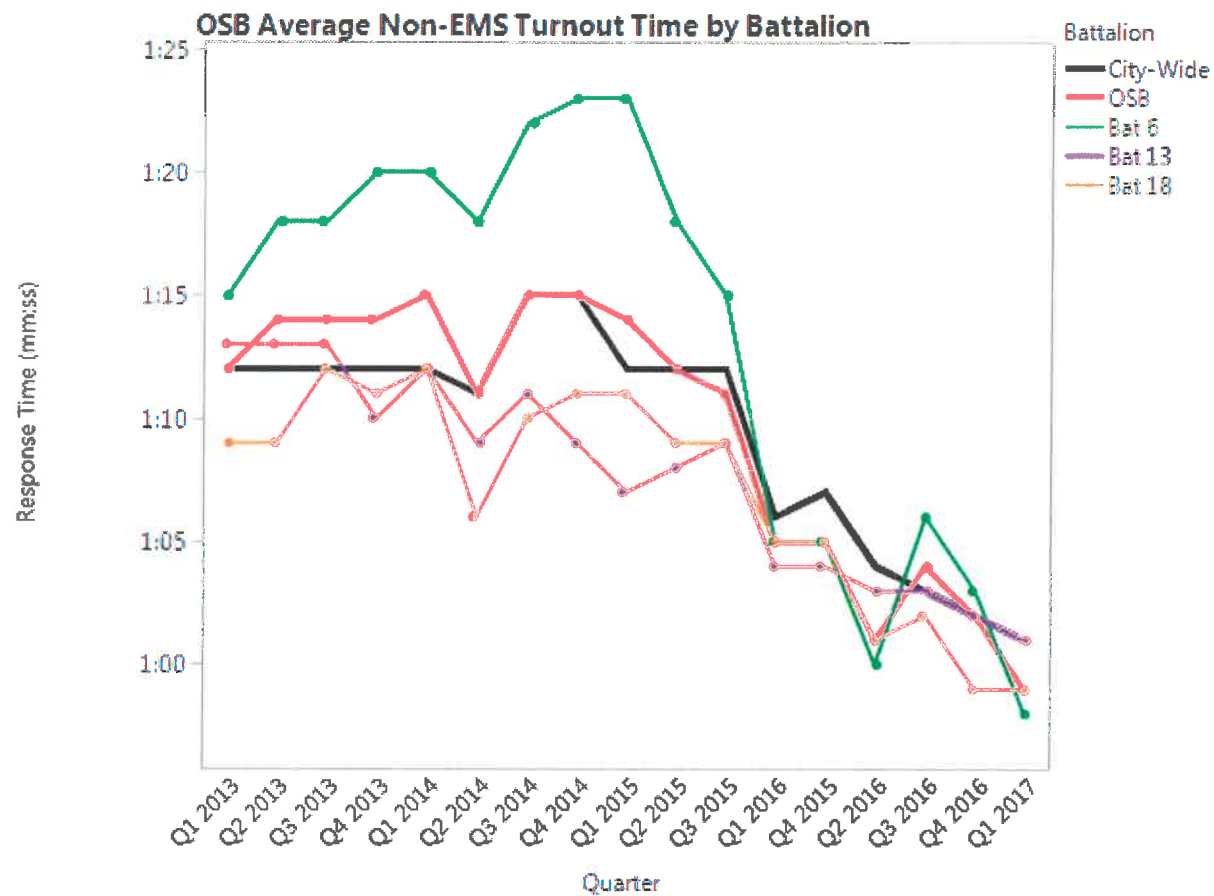


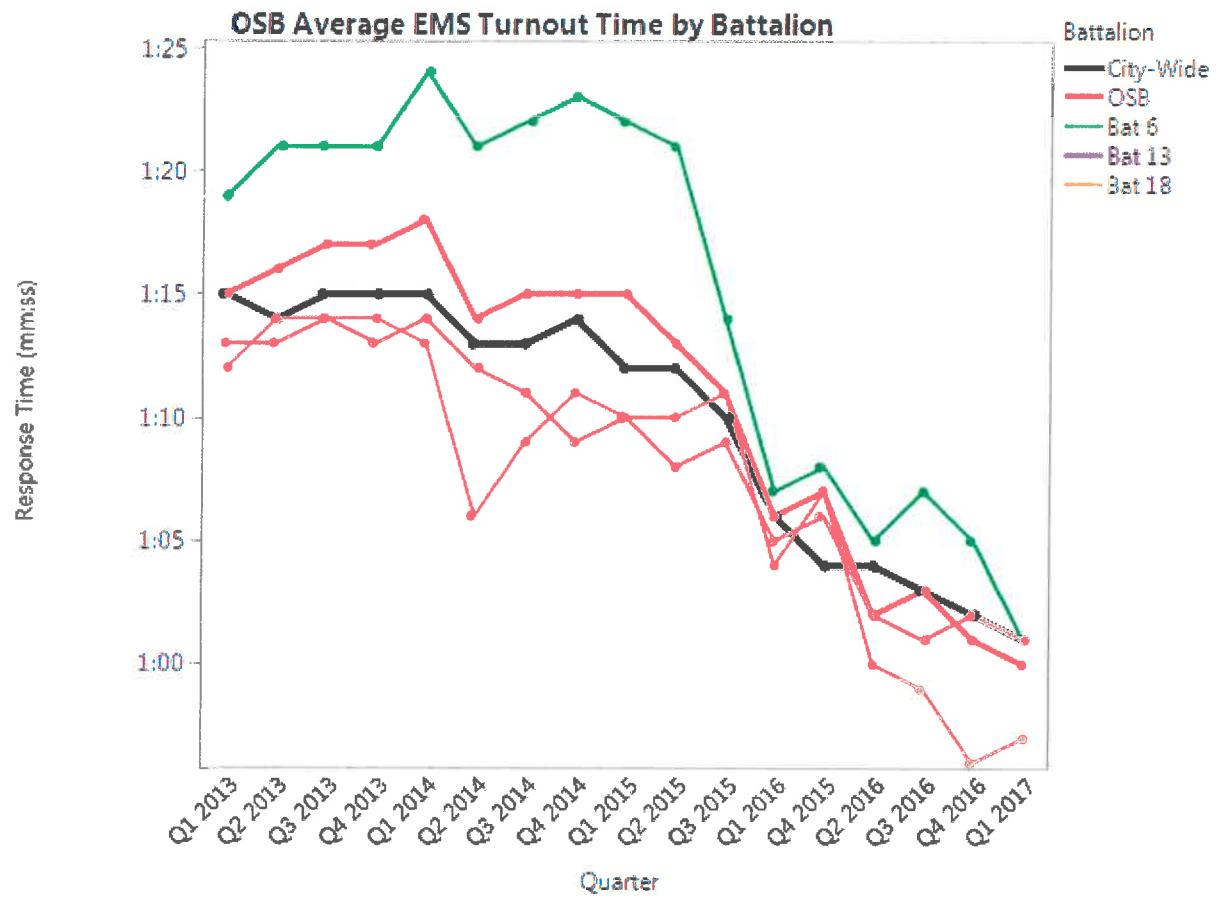


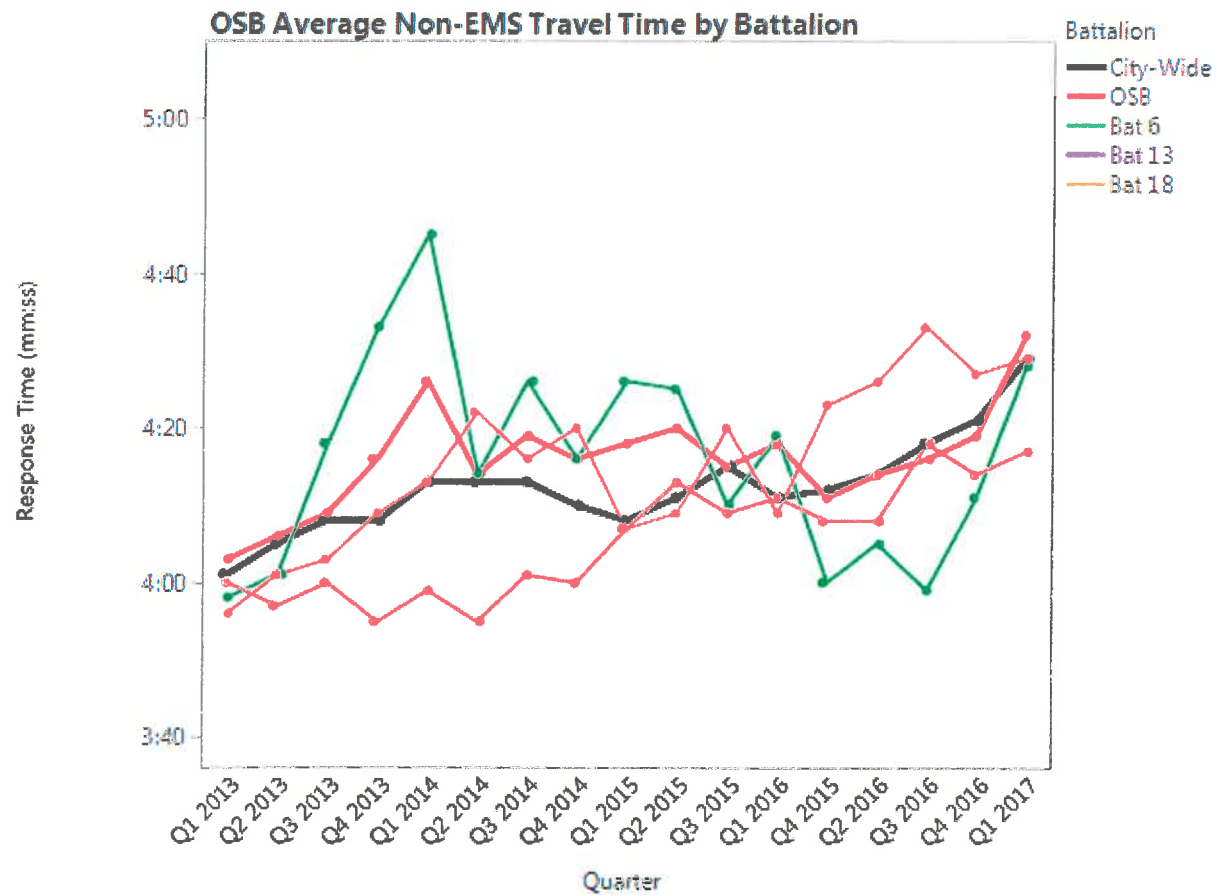


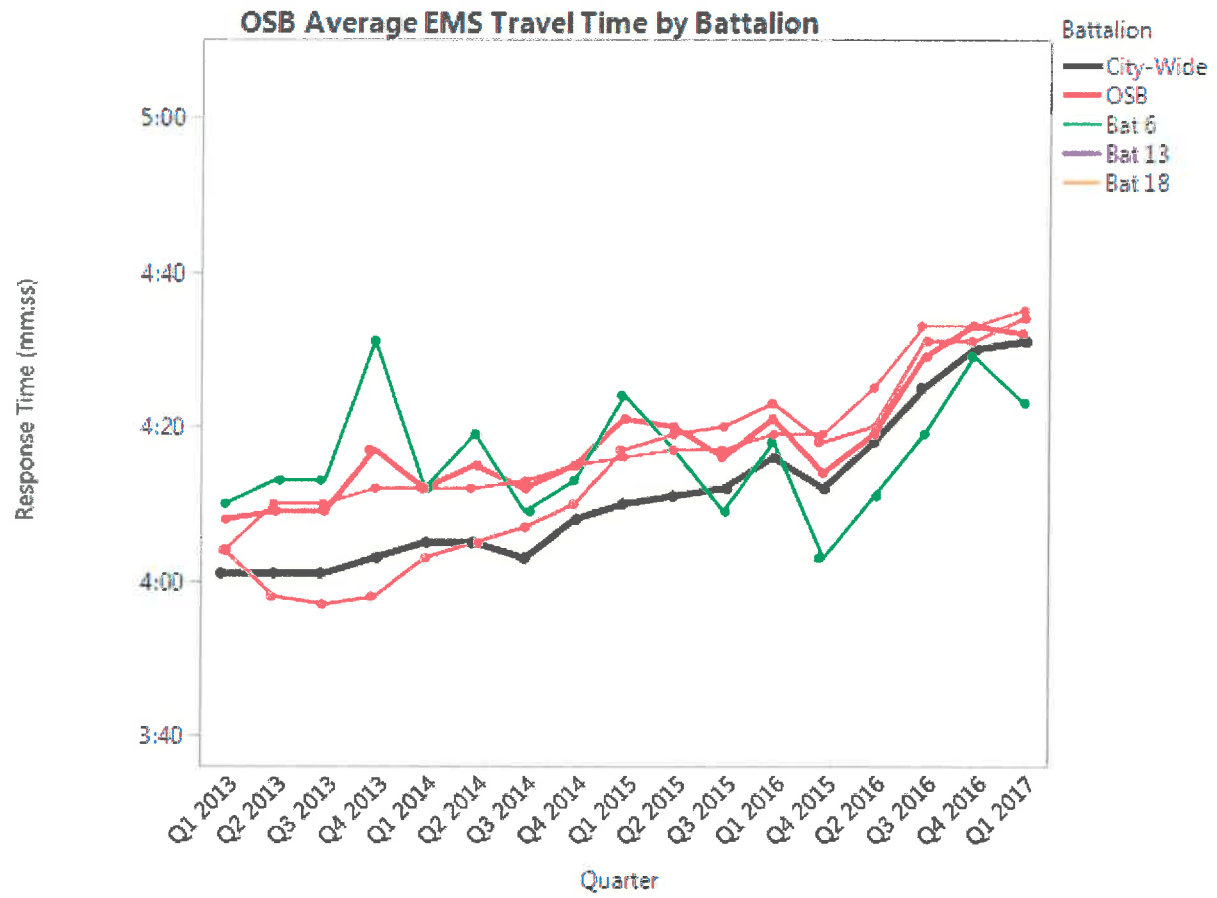


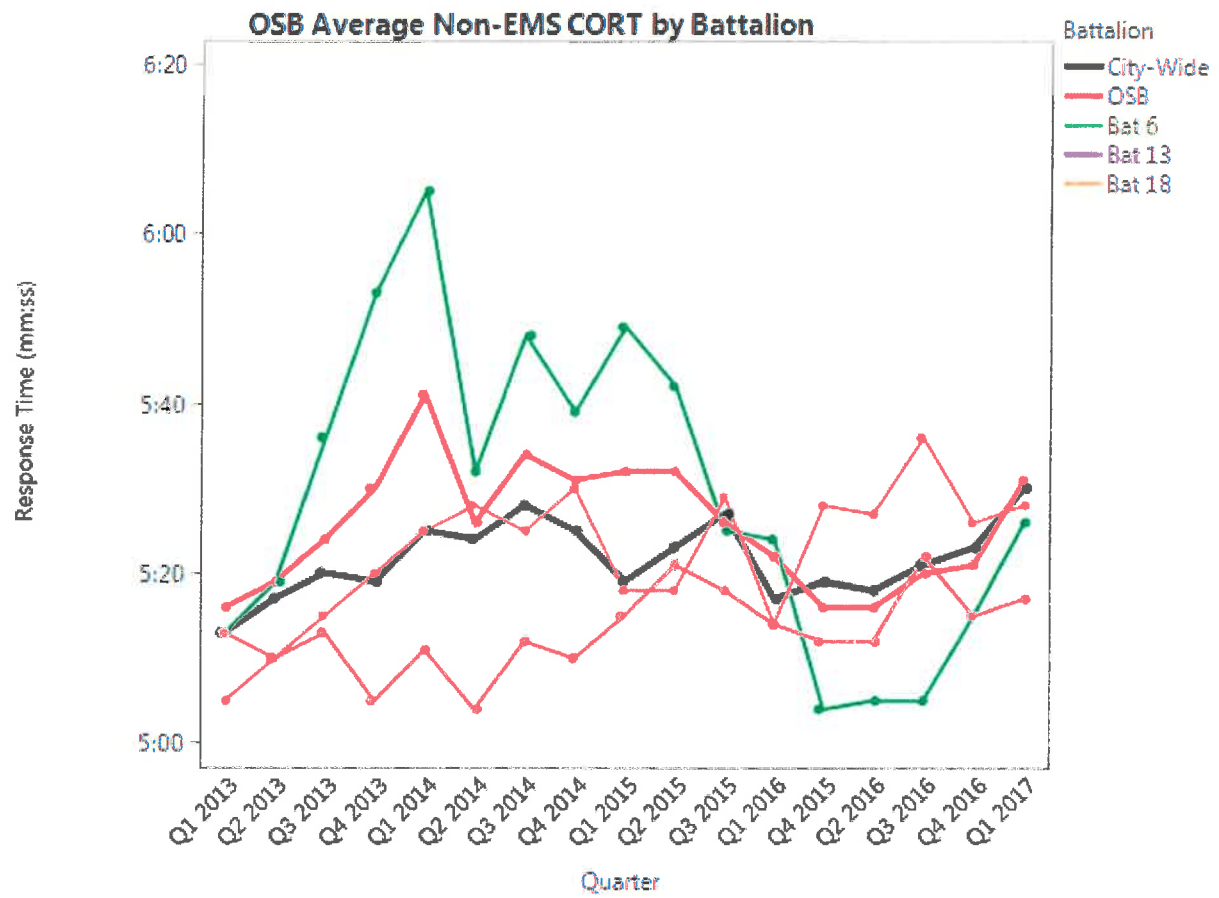


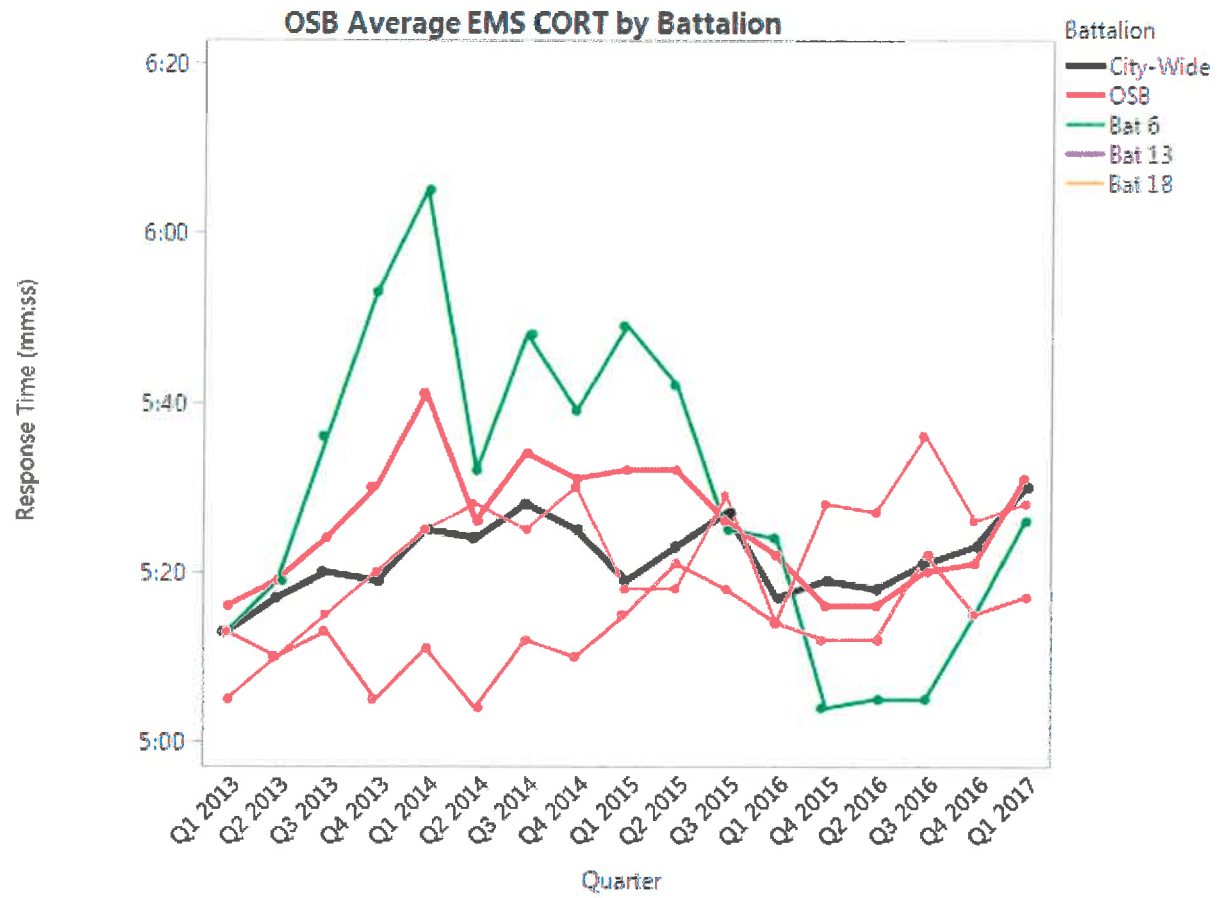


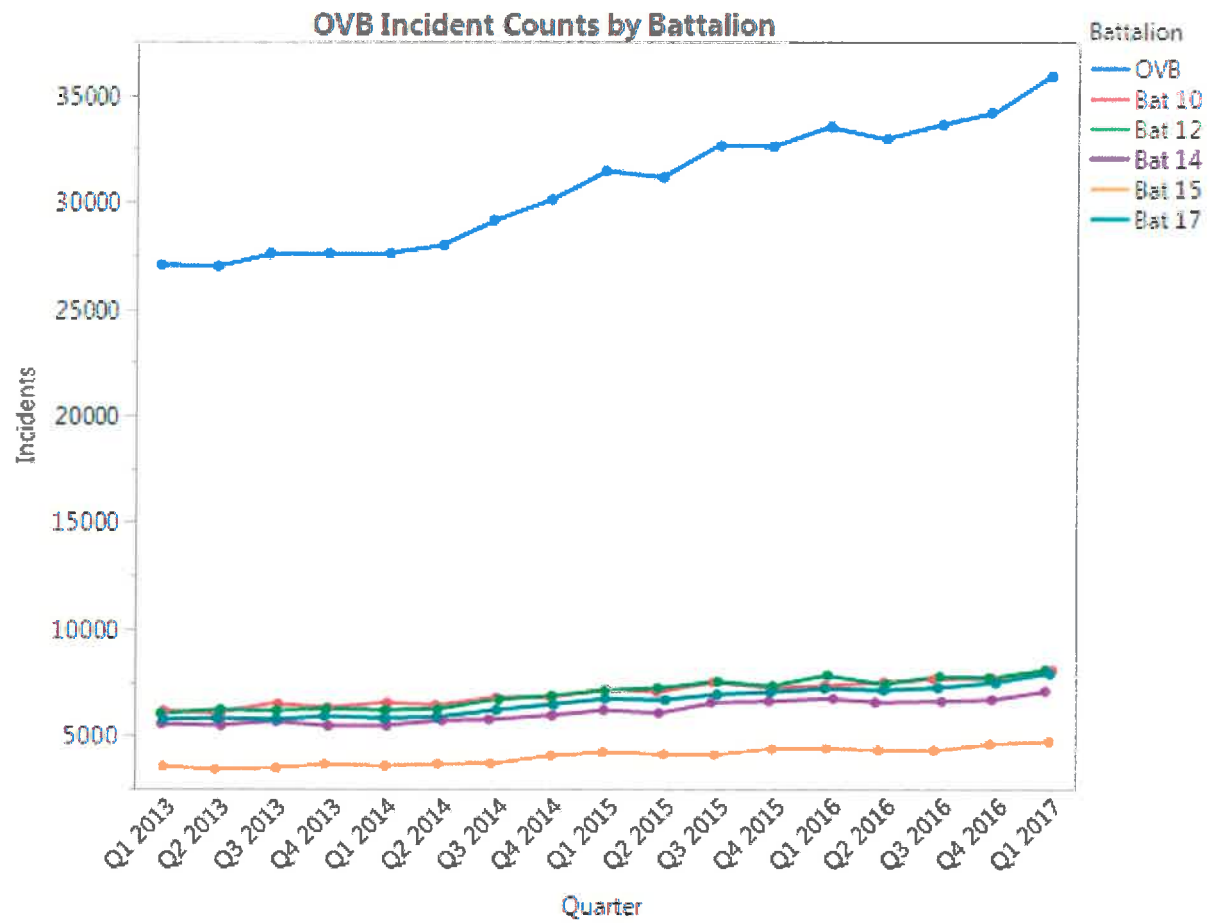


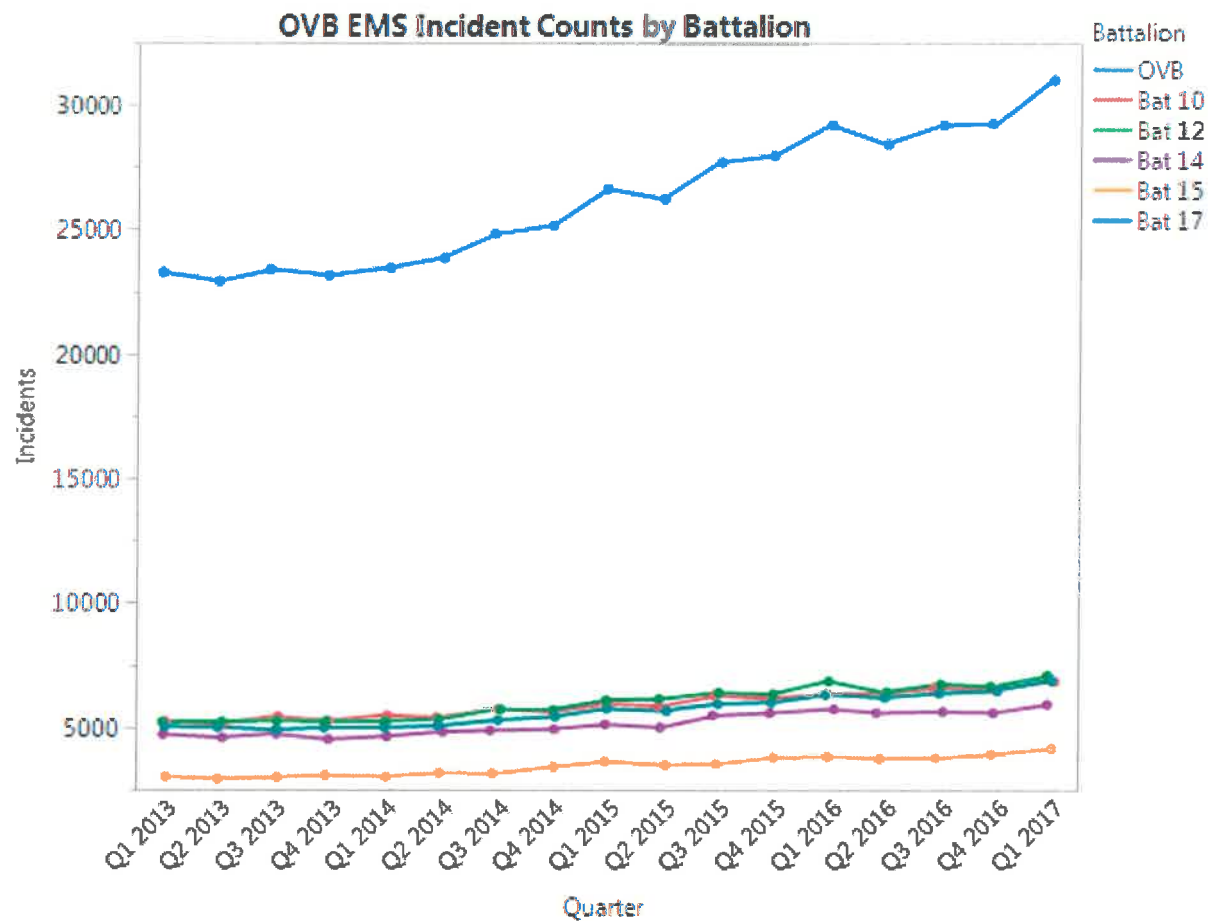


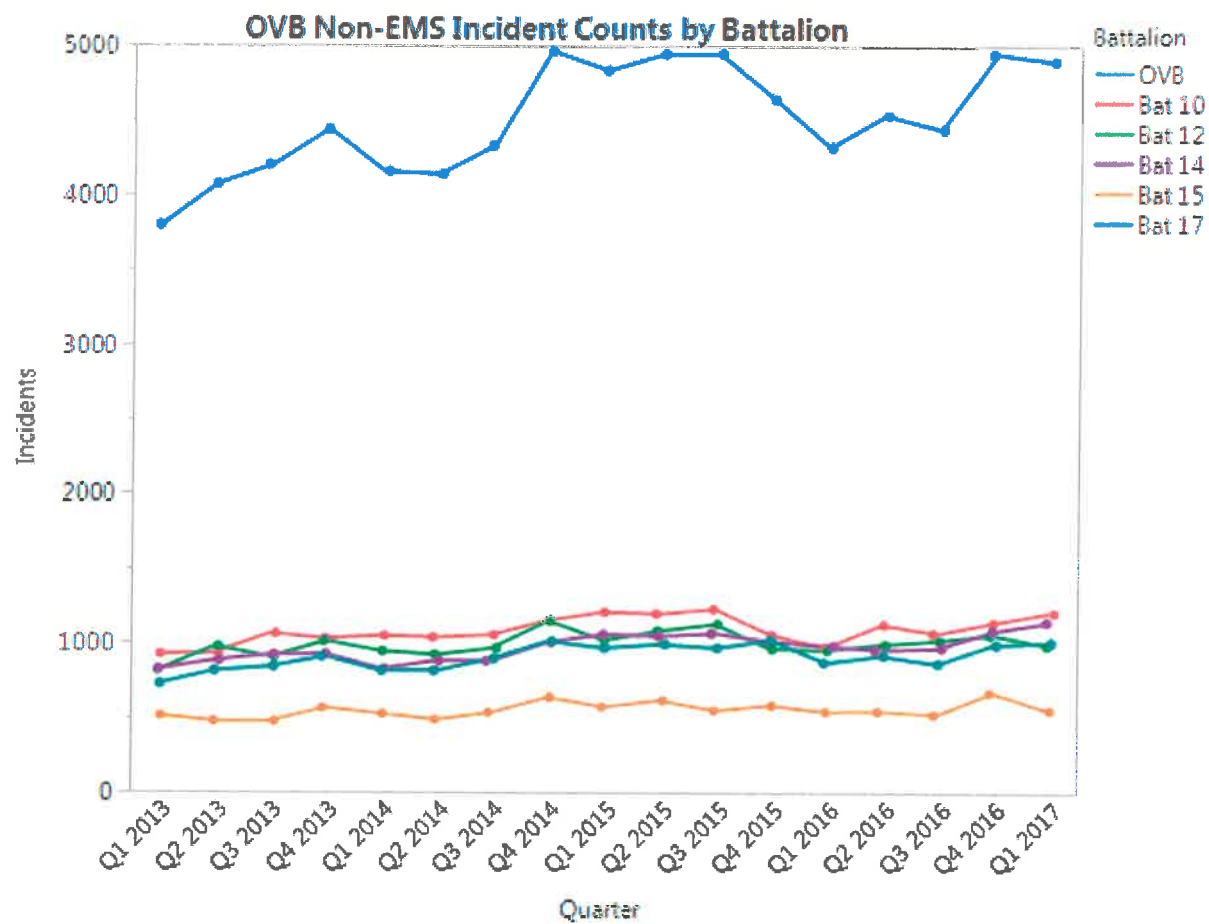


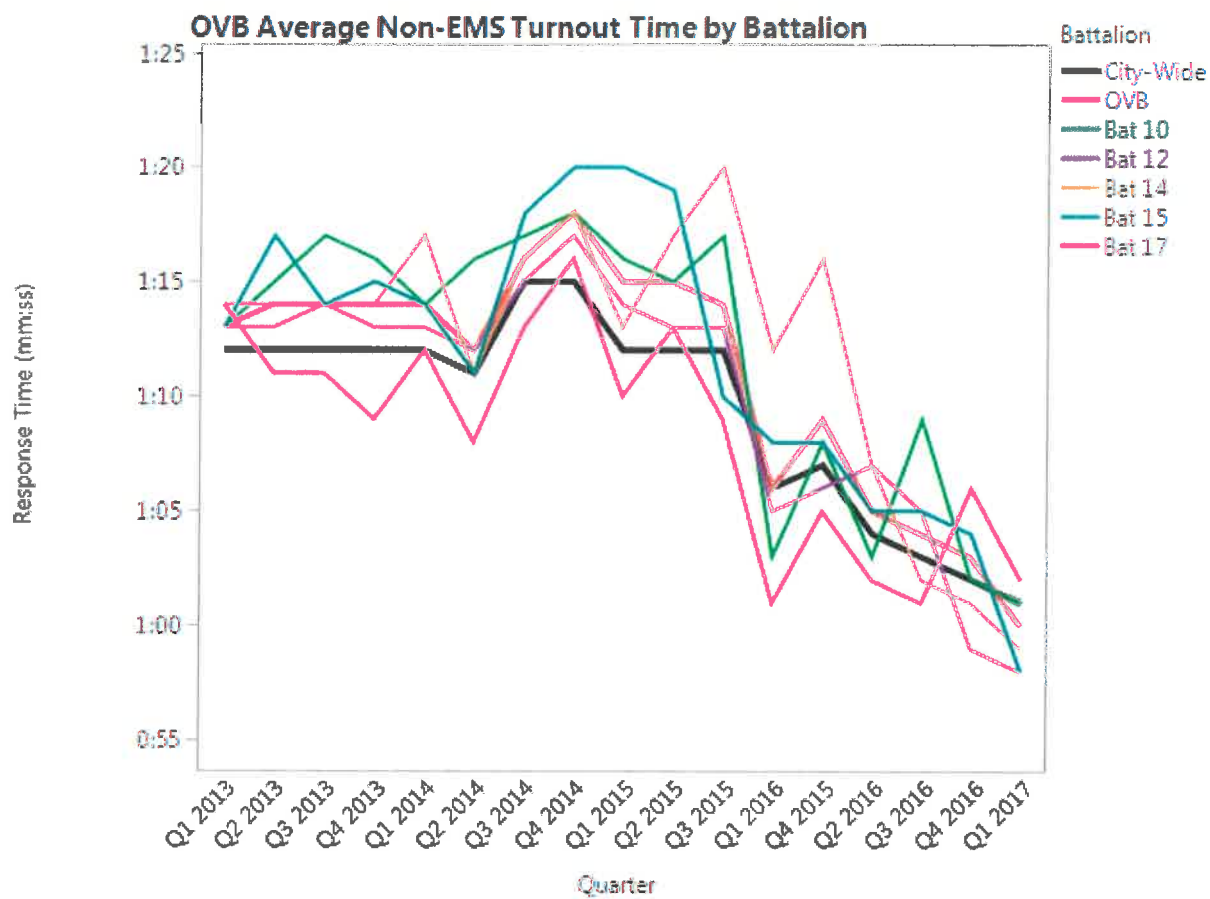


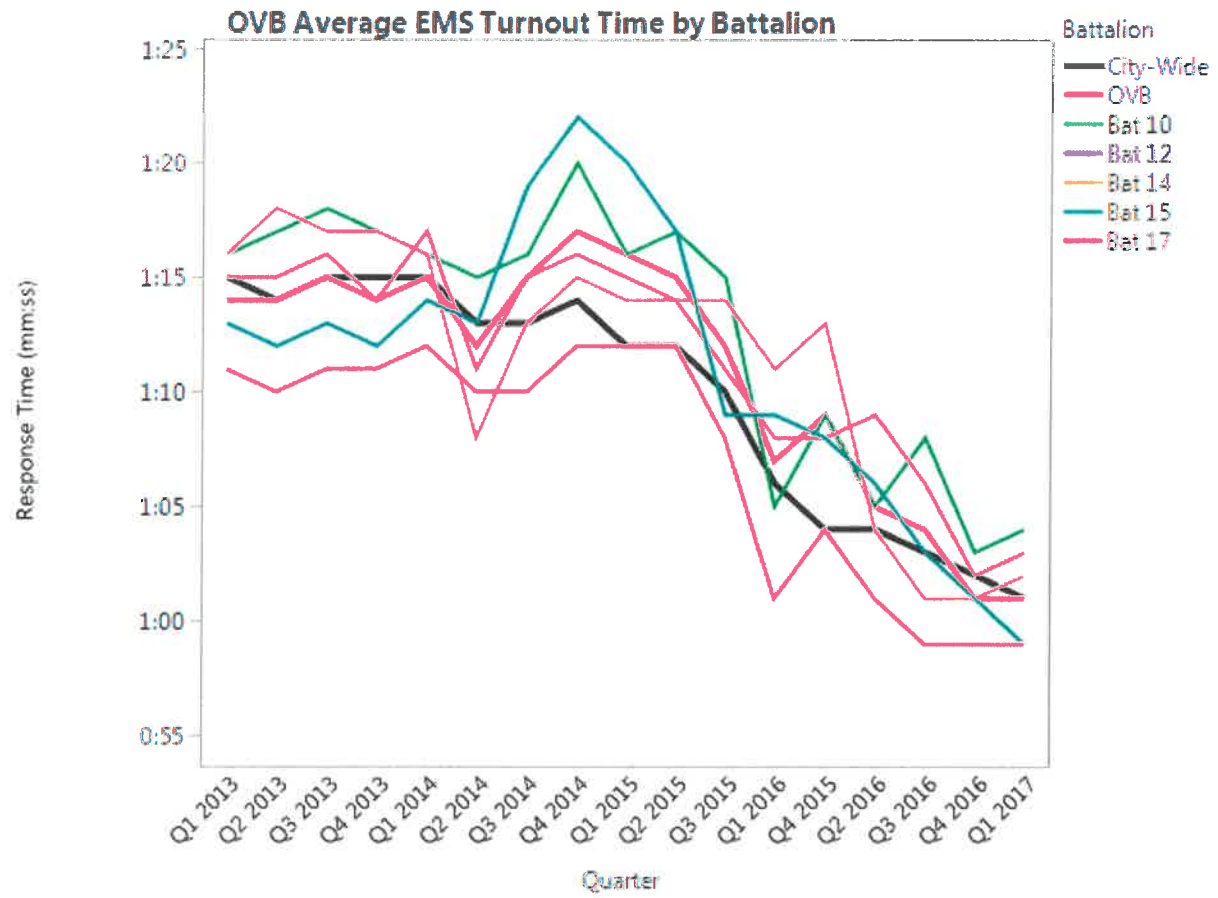


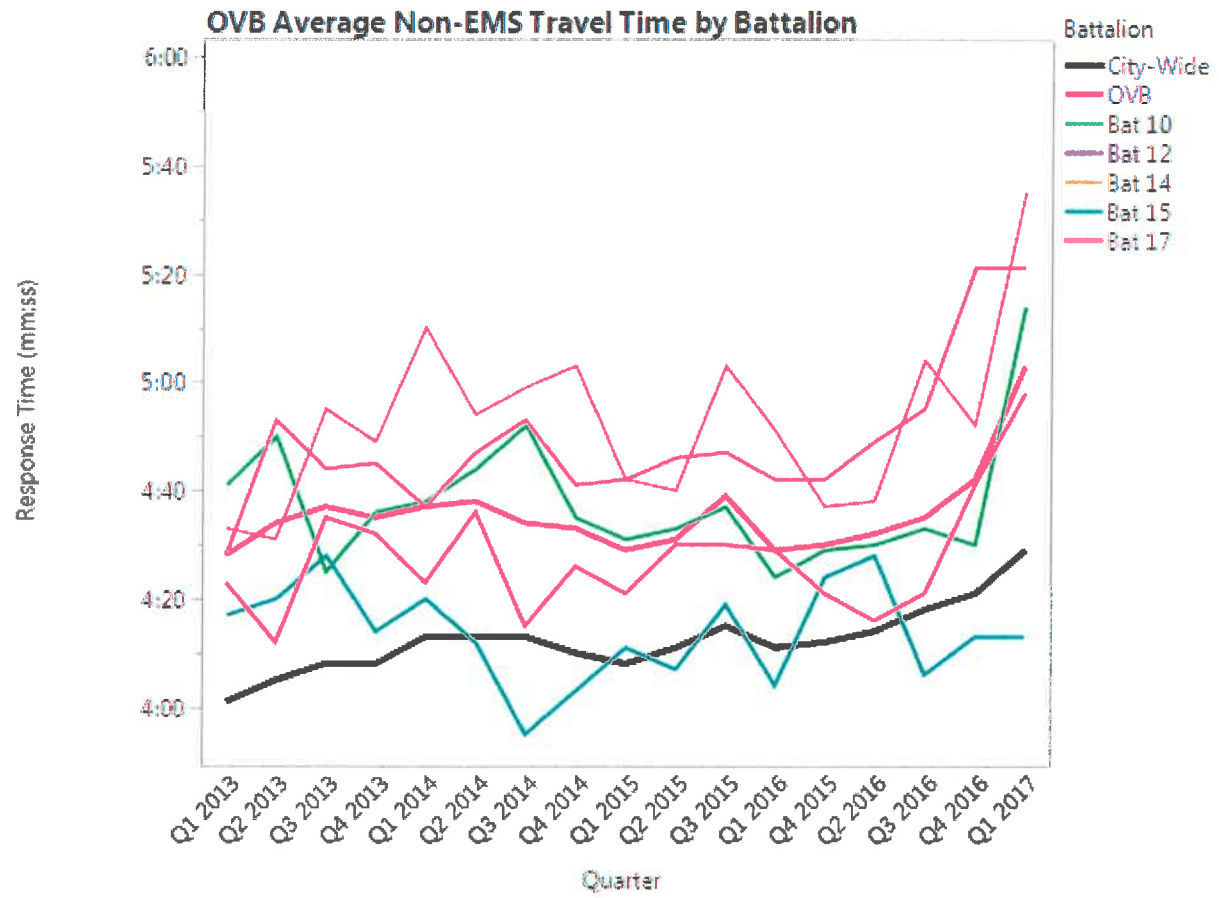


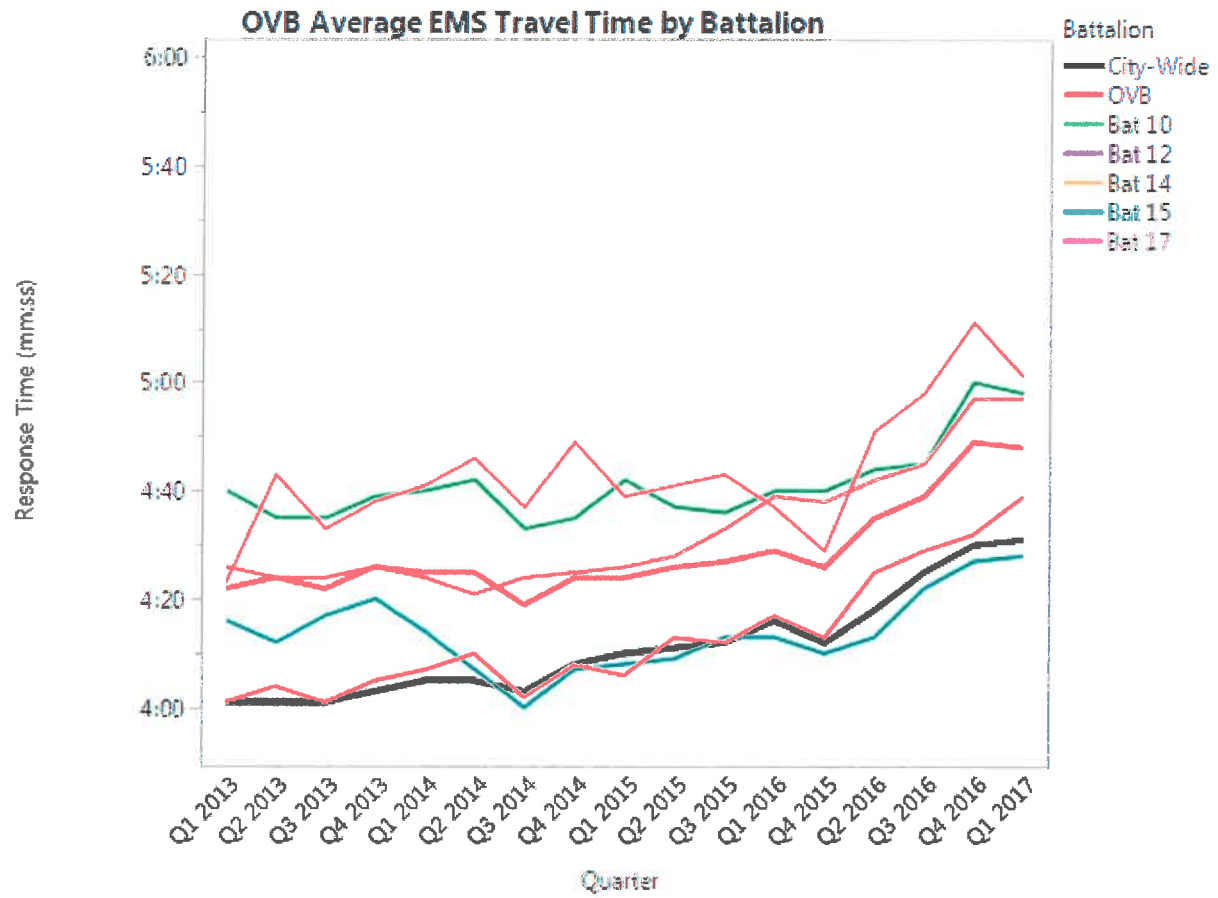


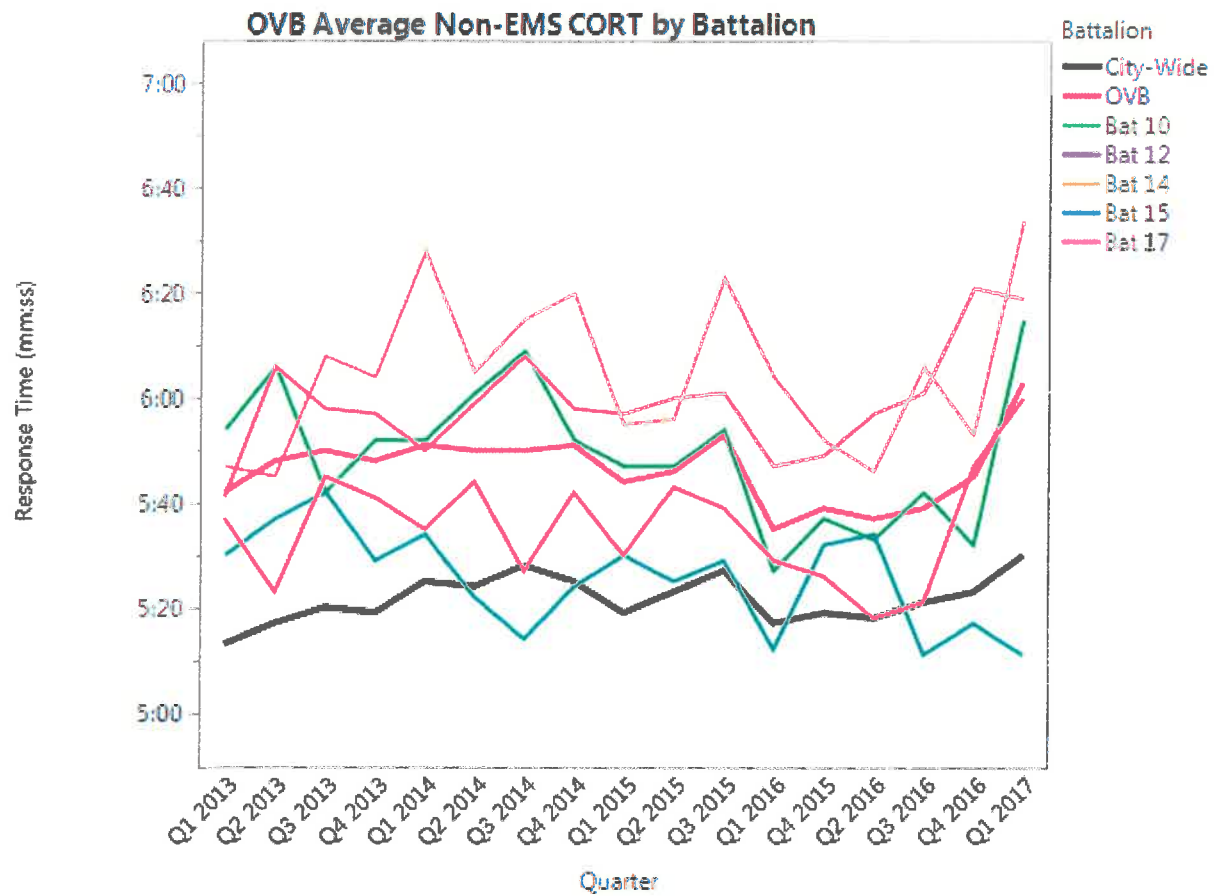


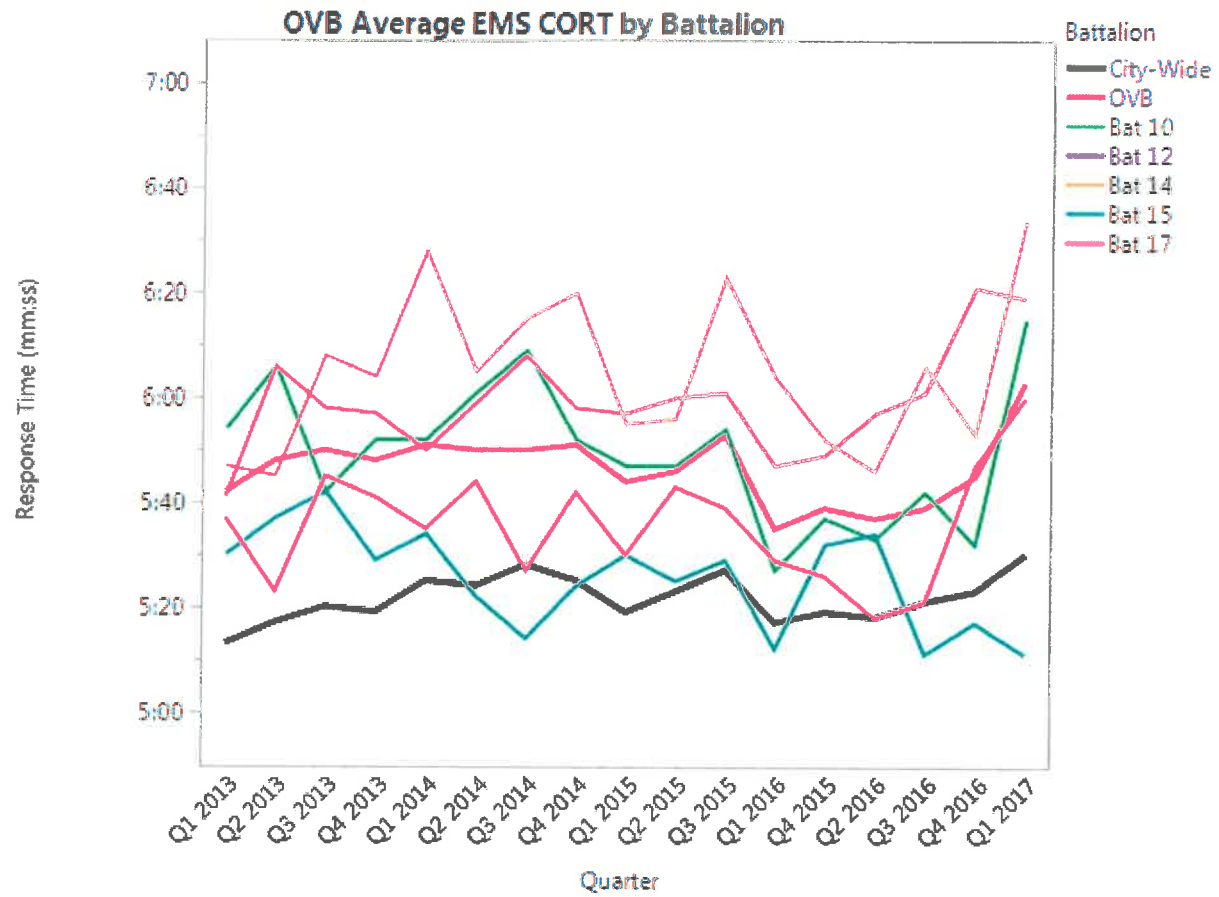






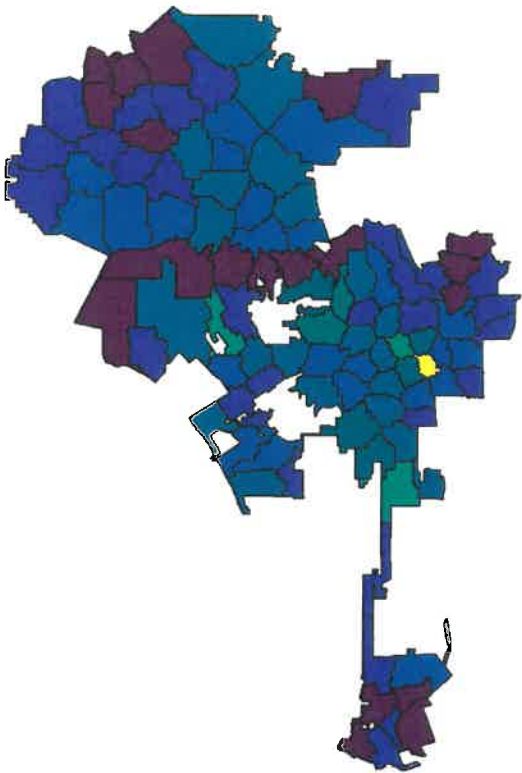
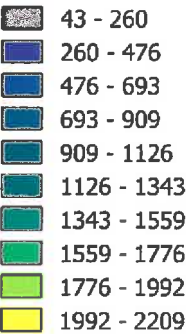




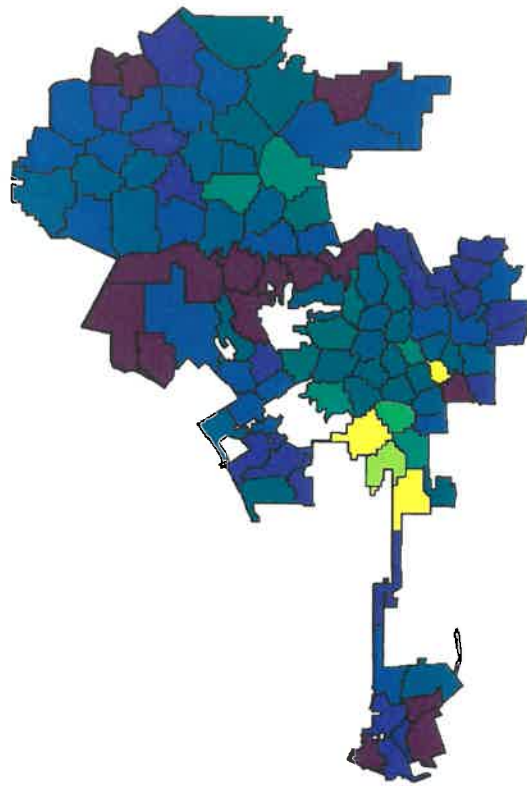
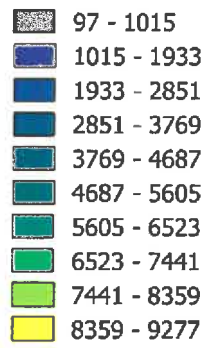


Annual Incident Maps

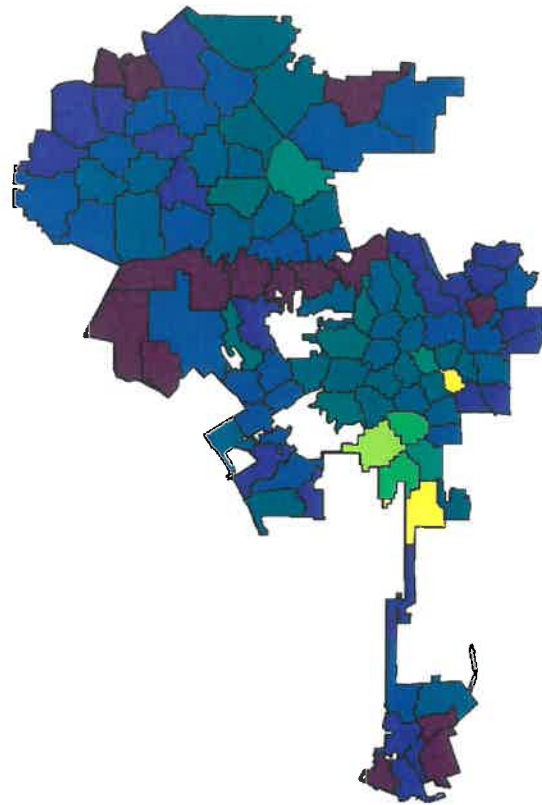
2013 Non-EMS Incident Counts



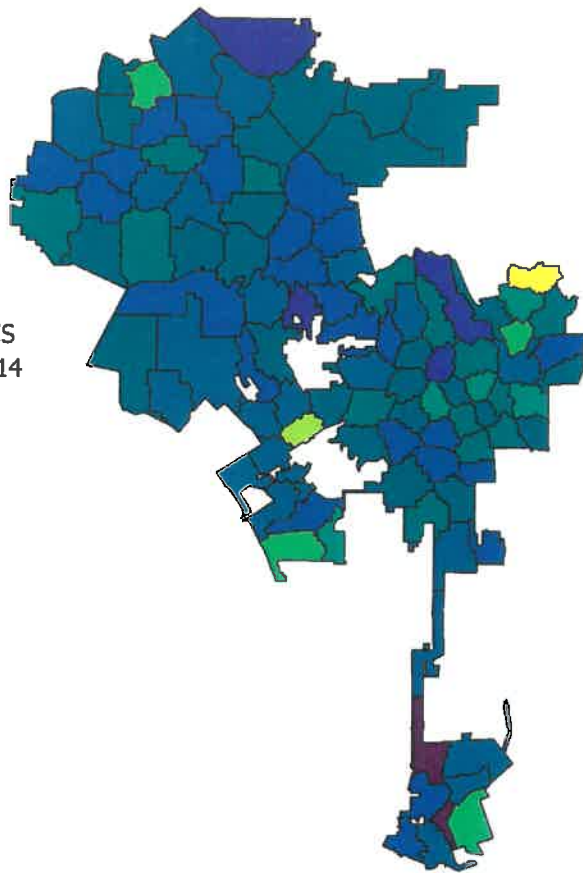
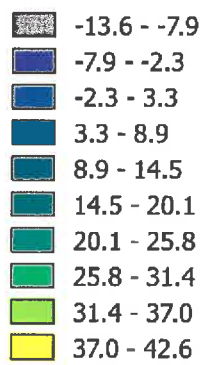
2013 EMS Incident Counts



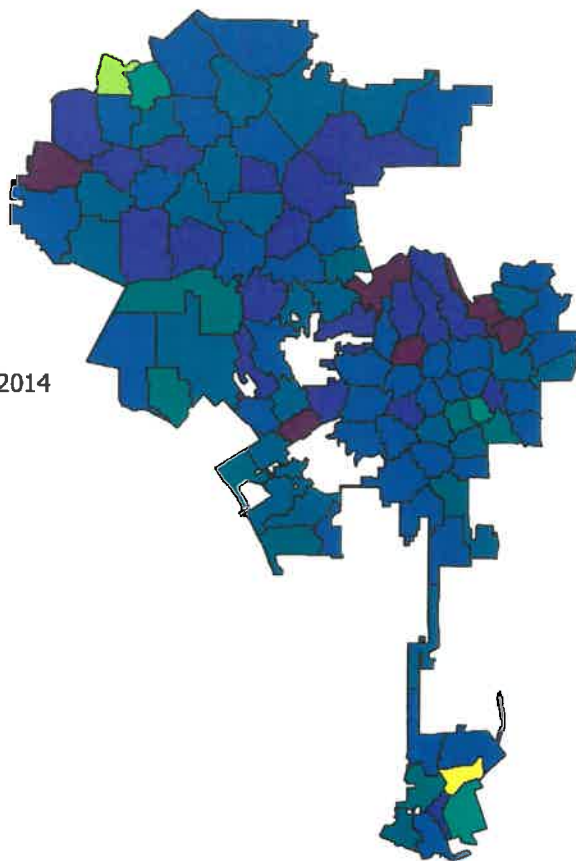
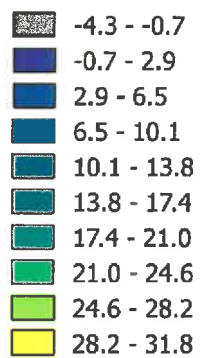
2013 Total Incident Counts



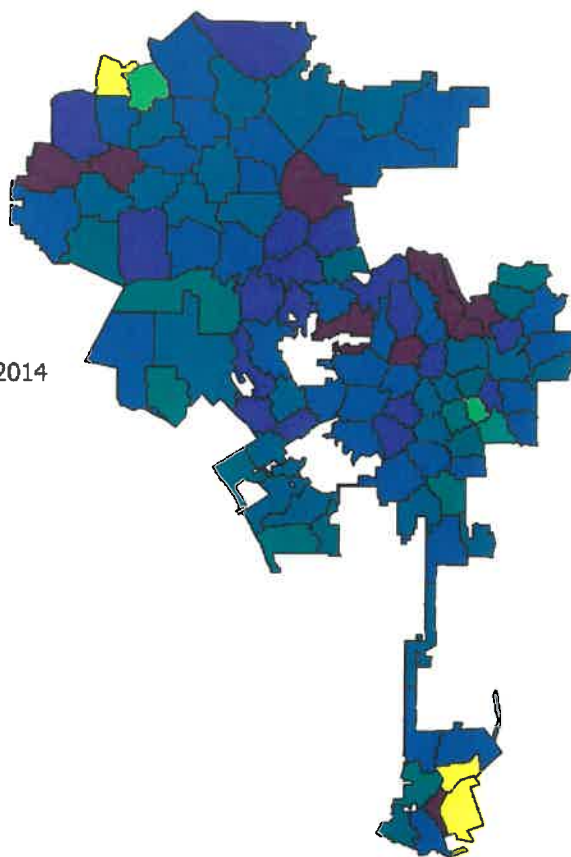
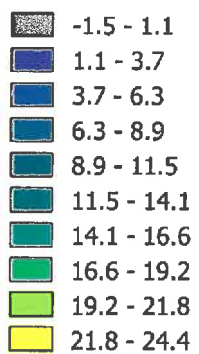
Percent Change in Non-EMS
Incidents from 2013 to 2014



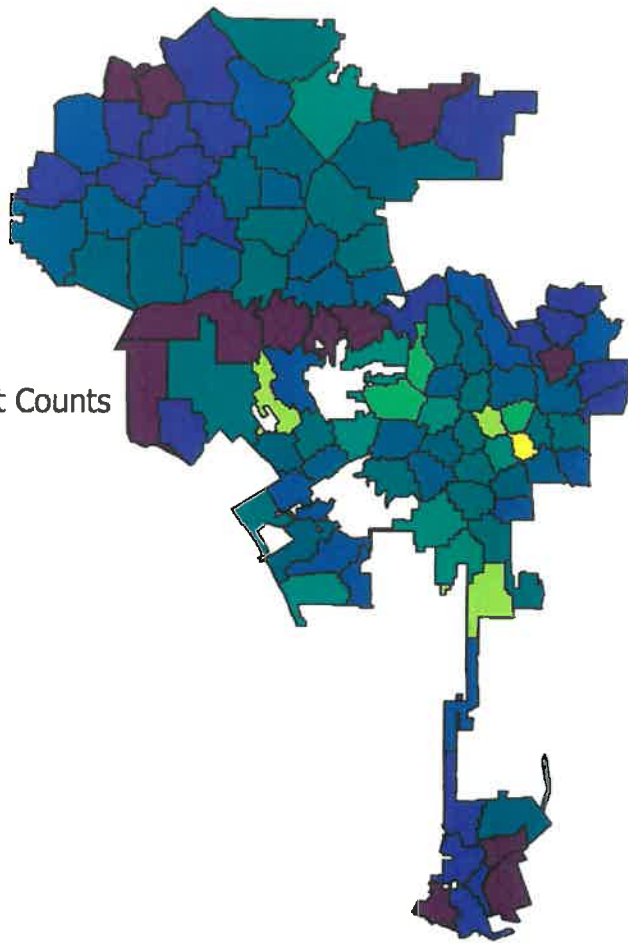
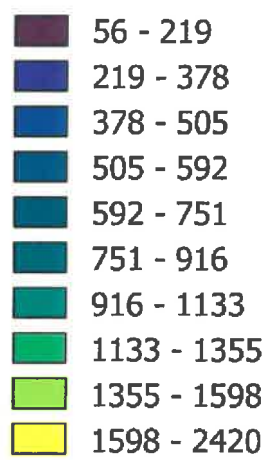
Percent Change in EMS
Incidents from 2013 to 2014



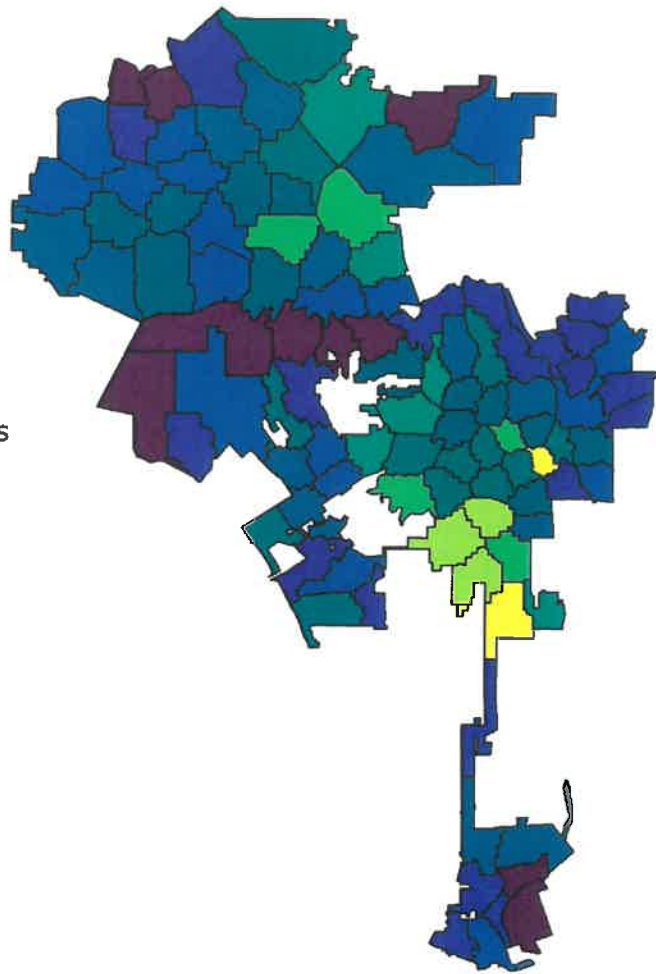
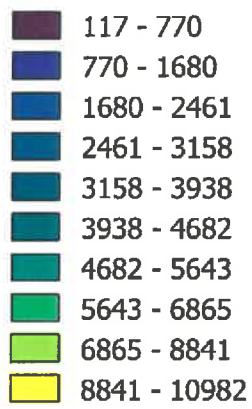
Percent Change in Total
Incidents from 2013 to 2014



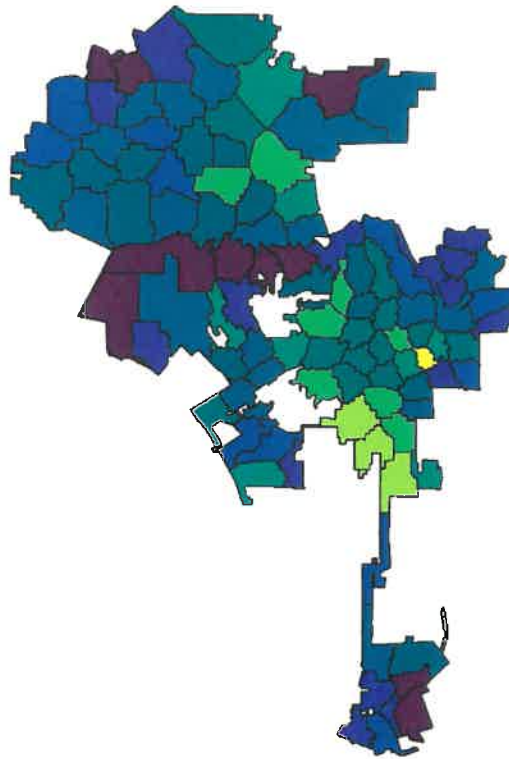
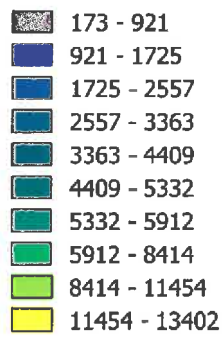
2014 Non-EMS Incident Counts



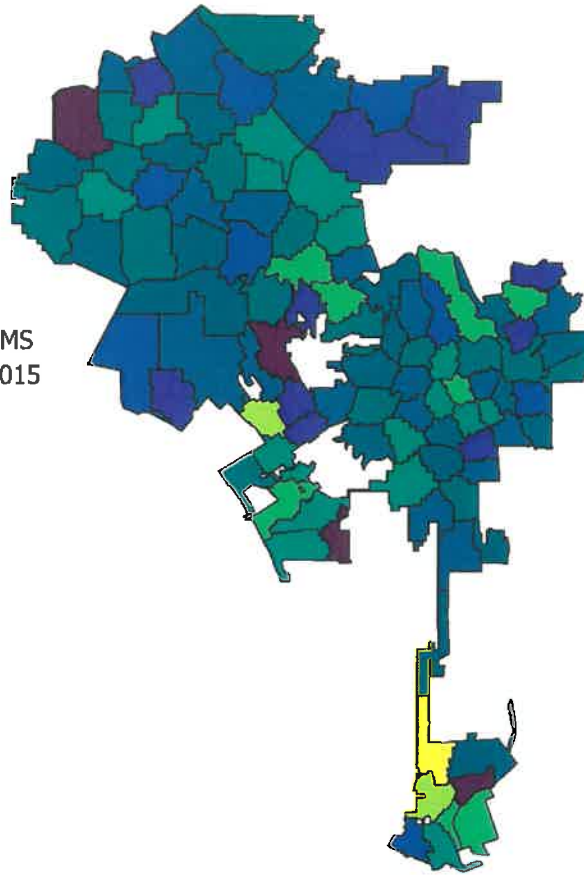
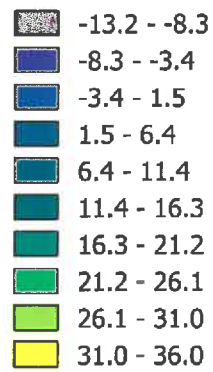
2014 EMS Incident Counts



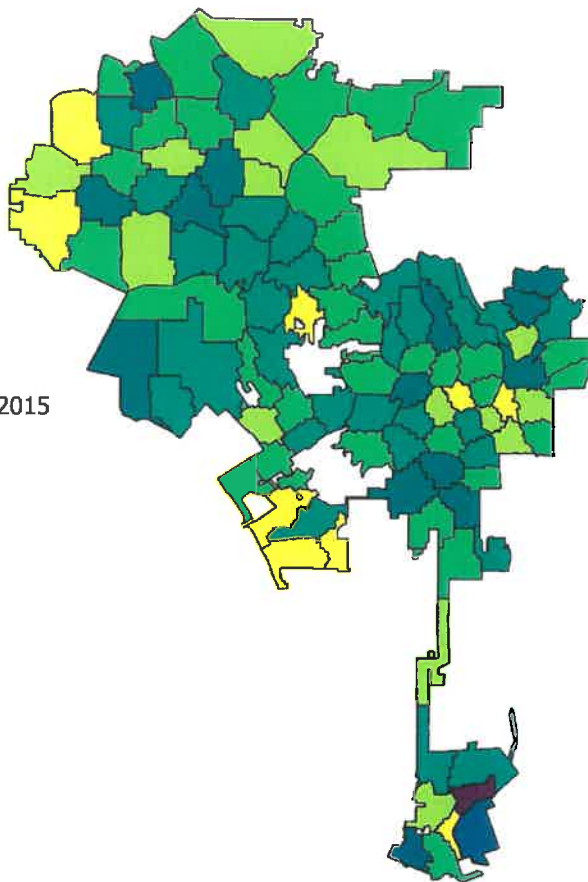
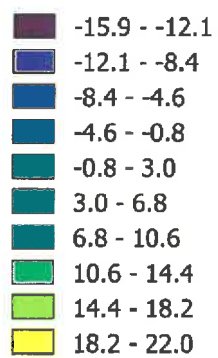
2014 Total Incident Counts



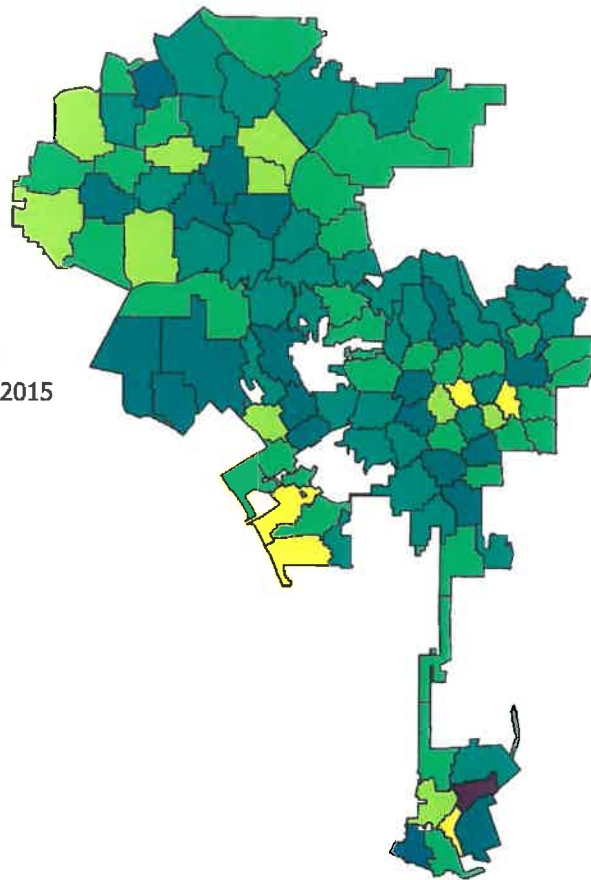
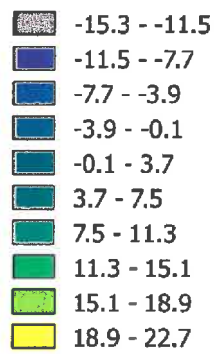
Percent Change in Non-EMS
Incidents from 2014 to 2015



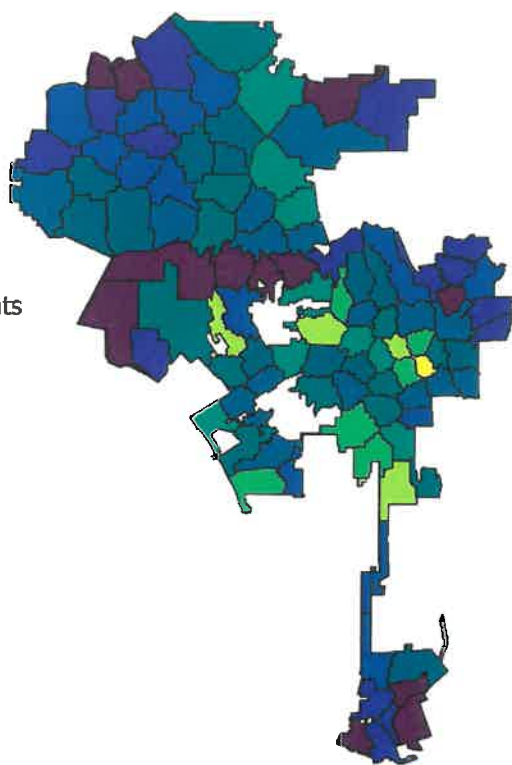
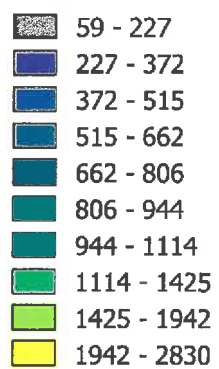
Percent Change in EMS
Incidents from 2014 to 2015



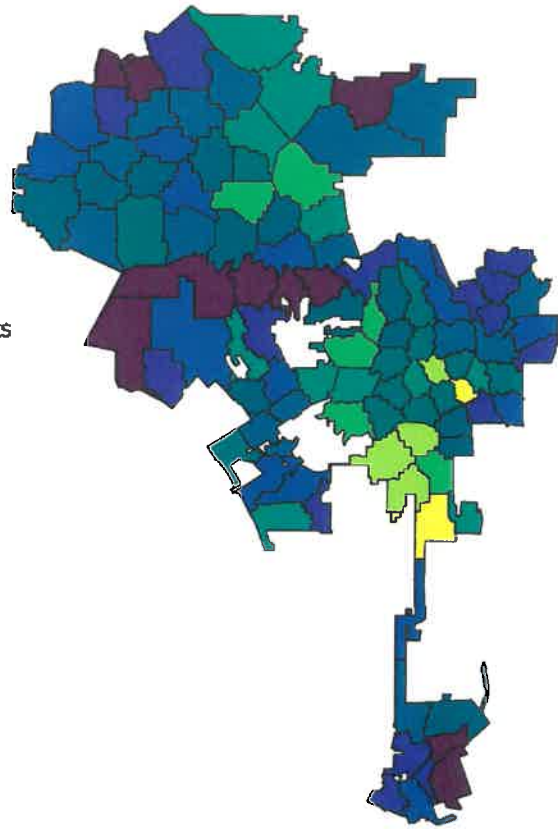
Percent Change in Total
Incidents from 2014 to 2015



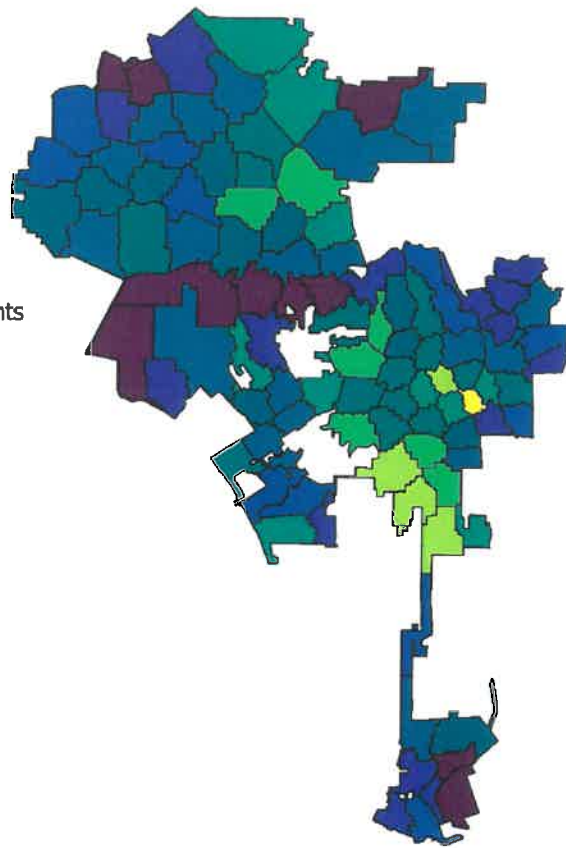
2015 Non-EMS Incident Counts



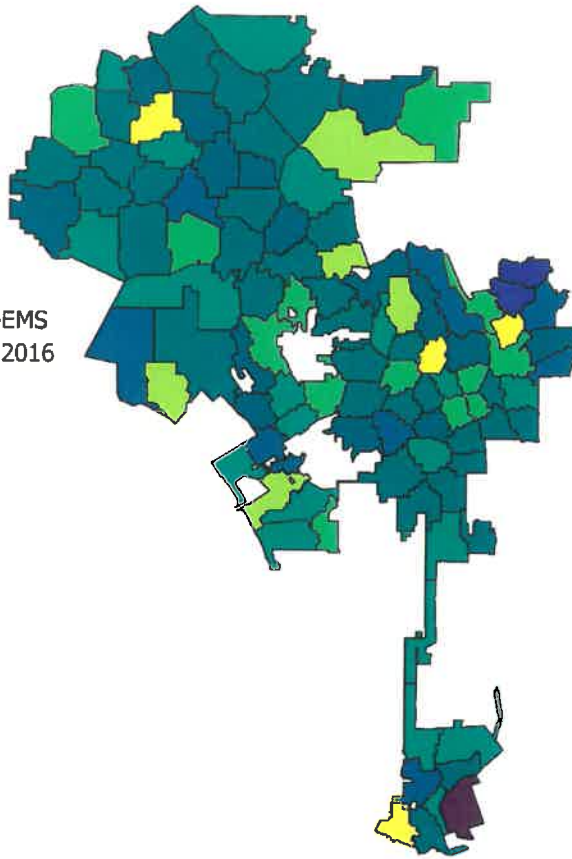
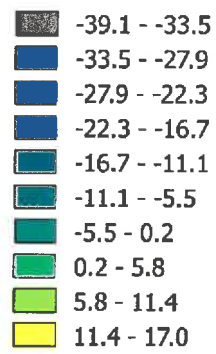
2015 EMS Incident Counts



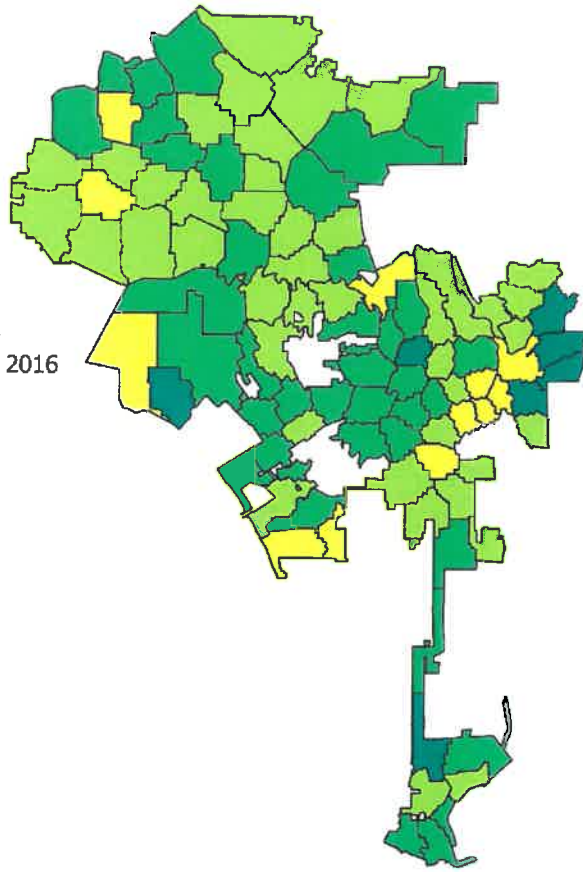
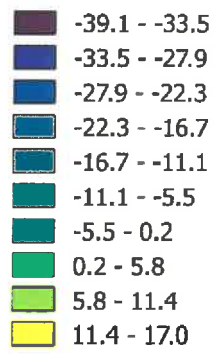
2015 Total Incident Counts



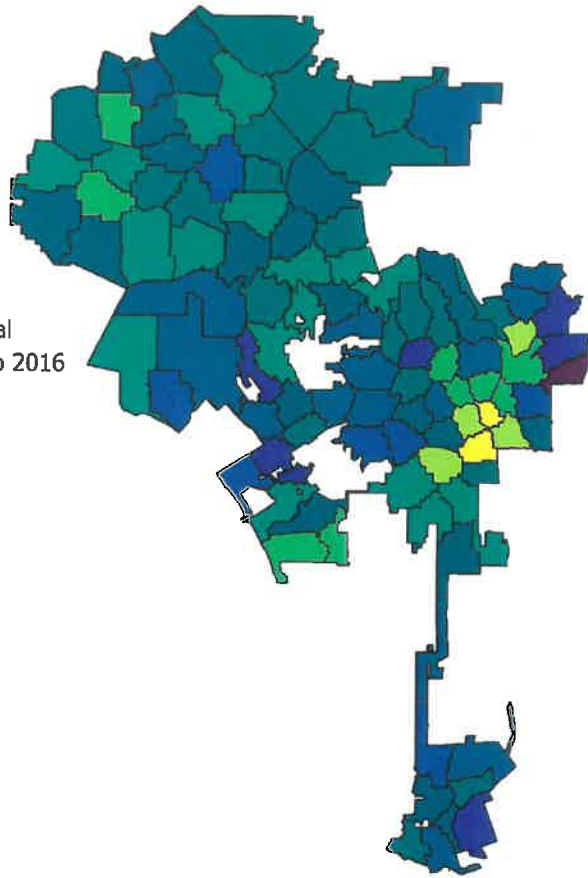
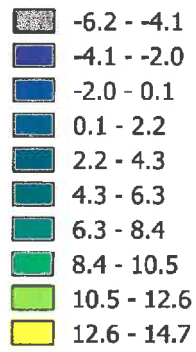
Percent Change in Non-EMS
Incidents from 2015 to 2016



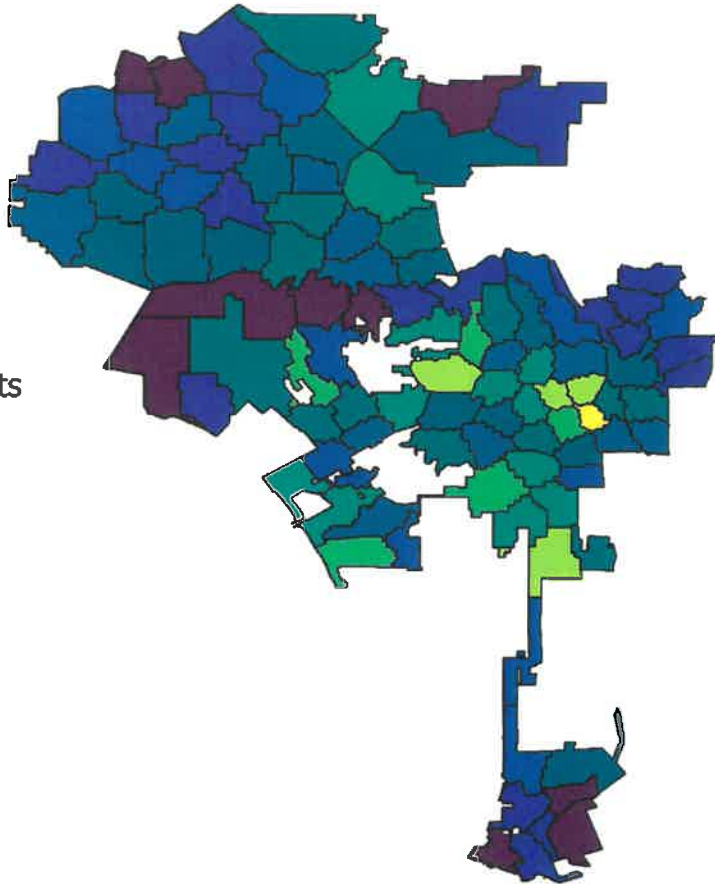
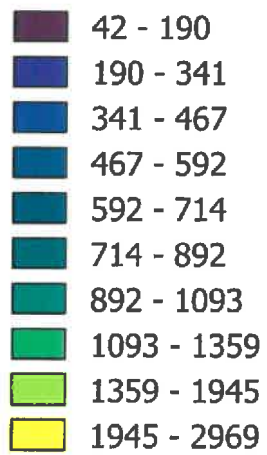
Percent Change in EMS
Incidents from 2015 to 2016



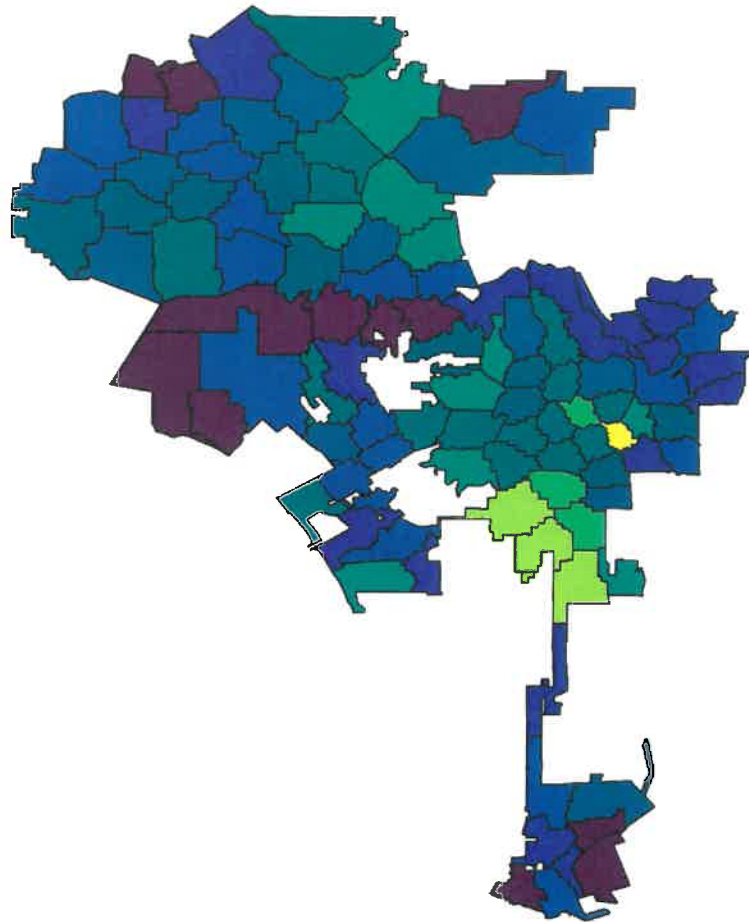
Percent Change in Total
Incidents from 2015 to 2016



2016 Non-EMS Incident Counts



2016 EMS Incident Counts



2016 Total Incident Counts

