



# LOS ANGELES FIRE DEPARTMENT

RALPH M. TERRAZAS  
FIRE CHIEF

October 6, 2016

BOARD OF FIRE COMMISSIONERS  
FILE NO. 16-120

TO: Board of Fire Commissioners

FROM:  Ralph M. Terrazas, Fire Chief

SUBJECT: FISCAL YEAR 2016-17 ANNUAL ORGANIZATION CHART

|               |                                   |   |                                    |
|---------------|-----------------------------------|---|------------------------------------|
| FINAL ACTION: | <input type="checkbox"/> Approved | <input type="checkbox"/> Approved w/Corrections | <input type="checkbox"/> Withdrawn |
|               | <input type="checkbox"/> Denied   | <input type="checkbox"/> Received & Filed       | <input type="checkbox"/> Other     |

## SUMMARY

In accordance with the department manual for Budget System of the City of Los Angeles, the annual Organization Chart is submitted for your approval.

## RECOMMENDATIONS

That the Board:

1. Adopt and sign the attached Organizational Chart for Fiscal Year 2016-17.
2. Authorize the Personnel Services Section to make technical adjustments, as necessary, to implement the Board's intention.

## CONCLUSION

Upon approval, please return the approved and signed board report and the original Organizational Chart for Fiscal Year 2016-17 to Frank Serrano at Personnel Services Section.

Board report prepared by Frank Serrano, Personnel Analyst II, Personnel Services Section.

Attachment



# LOS ANGELES FIRE DEPARTMENT ORGANIZATION CHART FISCAL YEAR 2016-2017

APPROVED BY:

---

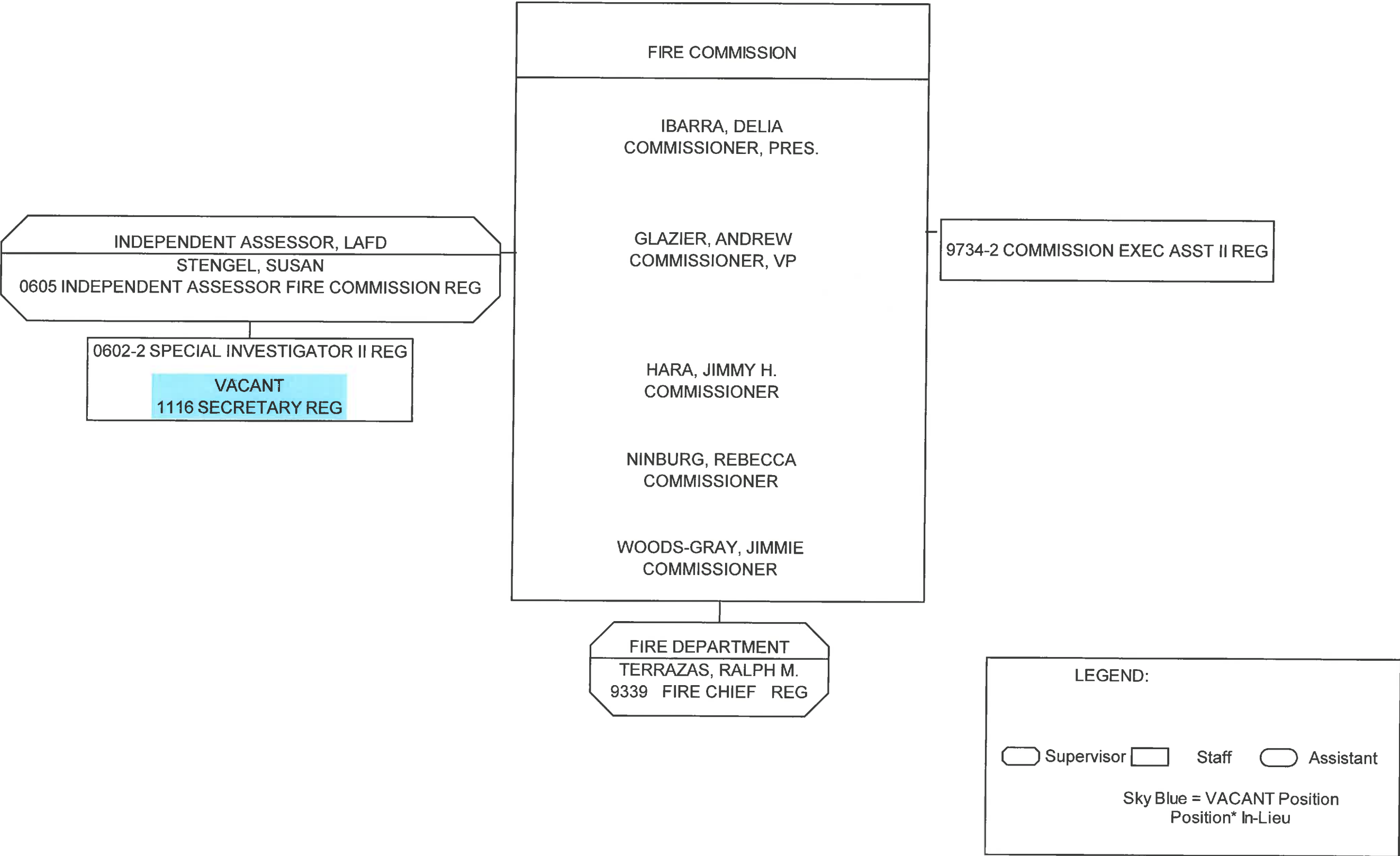
FIRE CHIEF

APPROVED BY:

---

BOARD OF FIRE COMMISSIONERS

# BOARD OF FIRE COMMISSIONERS

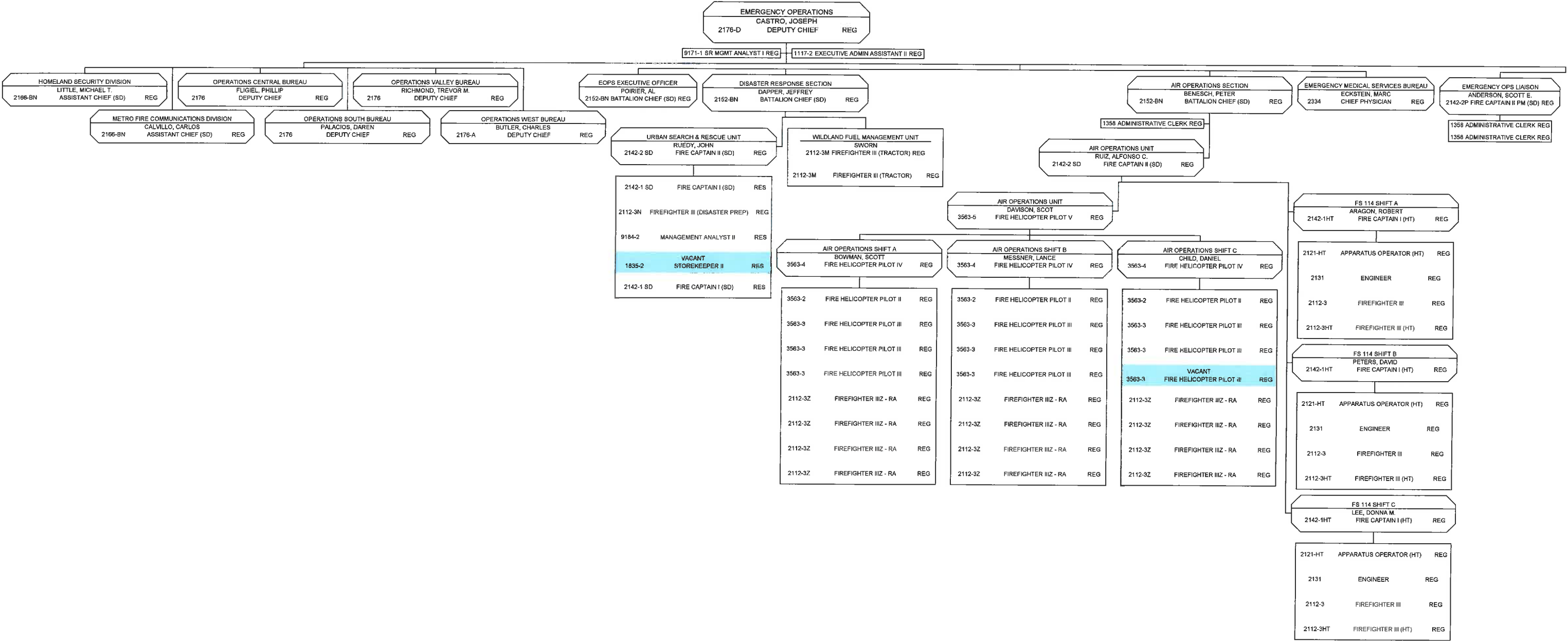


## AG3850 General Administration &amp; Support



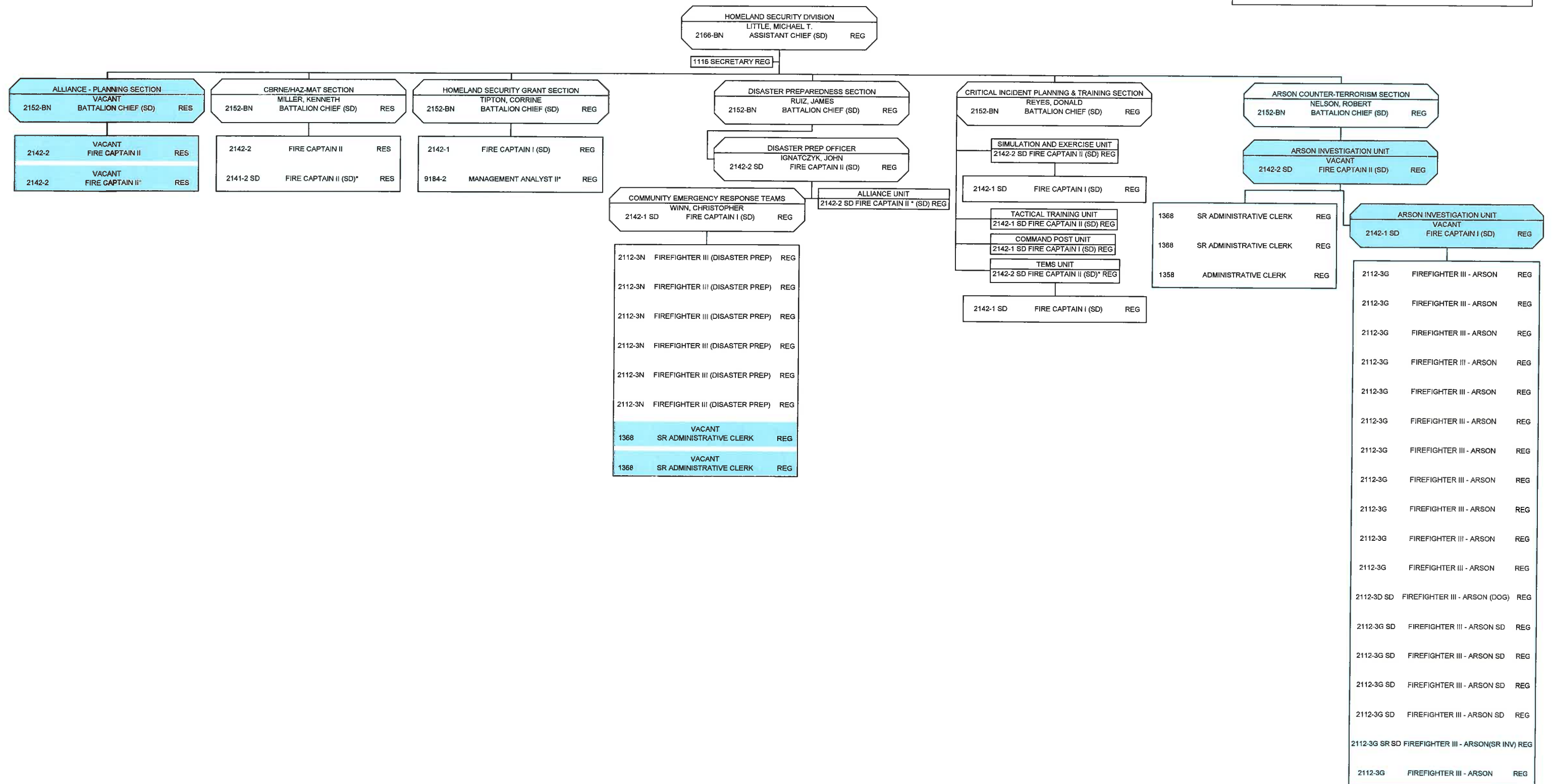
EMERGENCY OPERATIONS

AH3803 Fire Suppression  
AH3808 Emergency Medical Services  
AG3850 General Administration and Support



# EMERGENCY OPERATIONS - HOMELAND SECURITY DIVISION

AG3850 General Administration & Support  
AC3801 Arson Investigation & Counter Terrorism



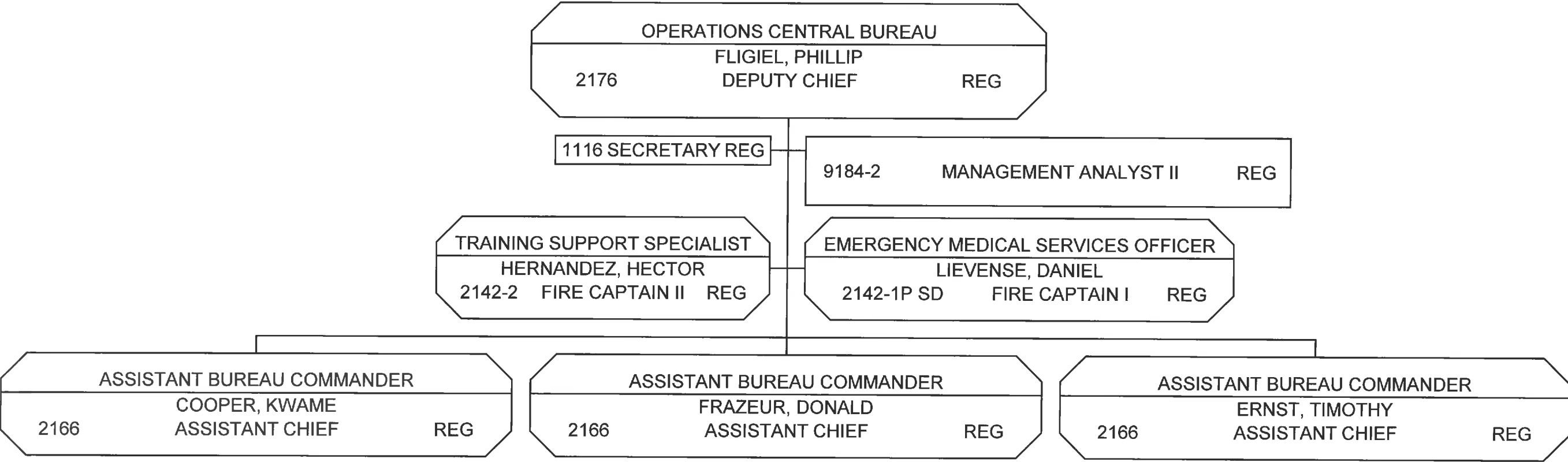
AF3804 Operations Control and Dispatch  
AG3850 General Administration & Support





# OPERATIONS CENTRAL BUREAU

AH3803 Fire Suppression  
AH3808 Emergency Medical Services  
AG3850 General Admin & Support





AH3803 Fire Suppression  
 AH3808 Emergency Medical Services  
 AG3850 General Admin & Support



AH3803 Fire Suppression  
AH3808 Emergency Medical Services  
AG3850 General Admin & Support

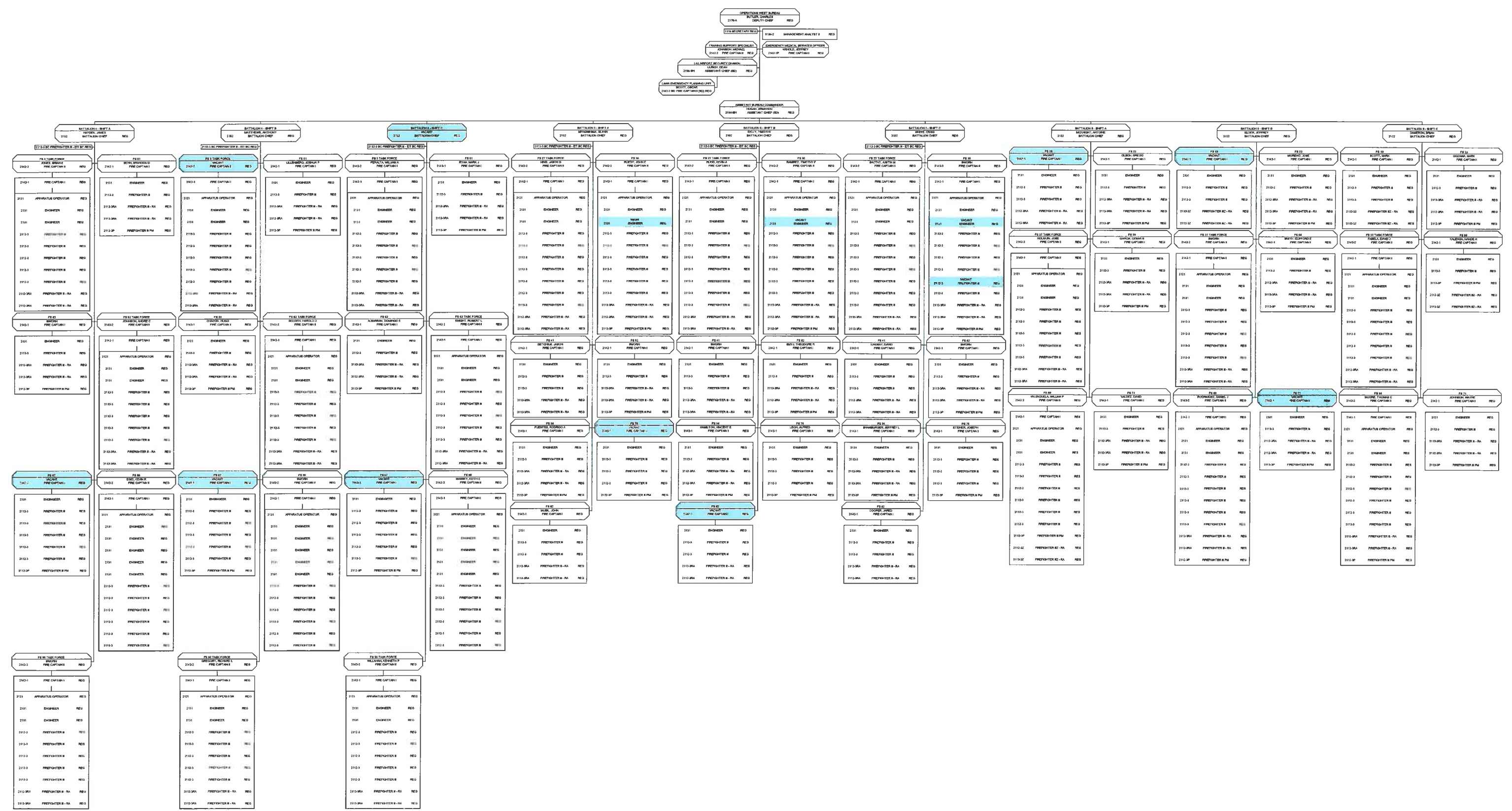


|  |
|--|
| AH3803 Fire Suppression<br>AH3808 Emergency Medical Services<br>AG3850 General Admin & Support |
|--|



OPERATIONS WEST BUREAU - SHIFT A, B, C

AH3803 Fire Suppression  
AH3808 Emergency Medical Services  
AG3850 General Admin & Support

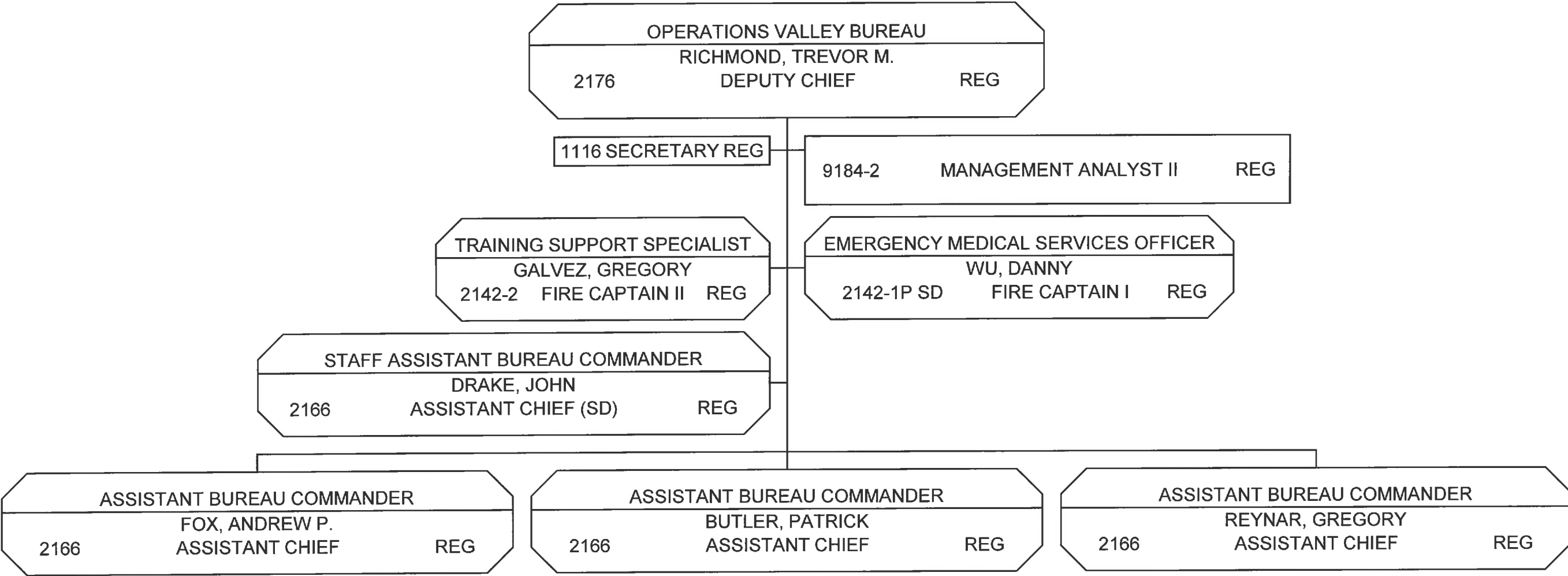


H3803 Fire Suppression  
H3808 Emergency Medical  
Services  
G3850 General Admin & Support



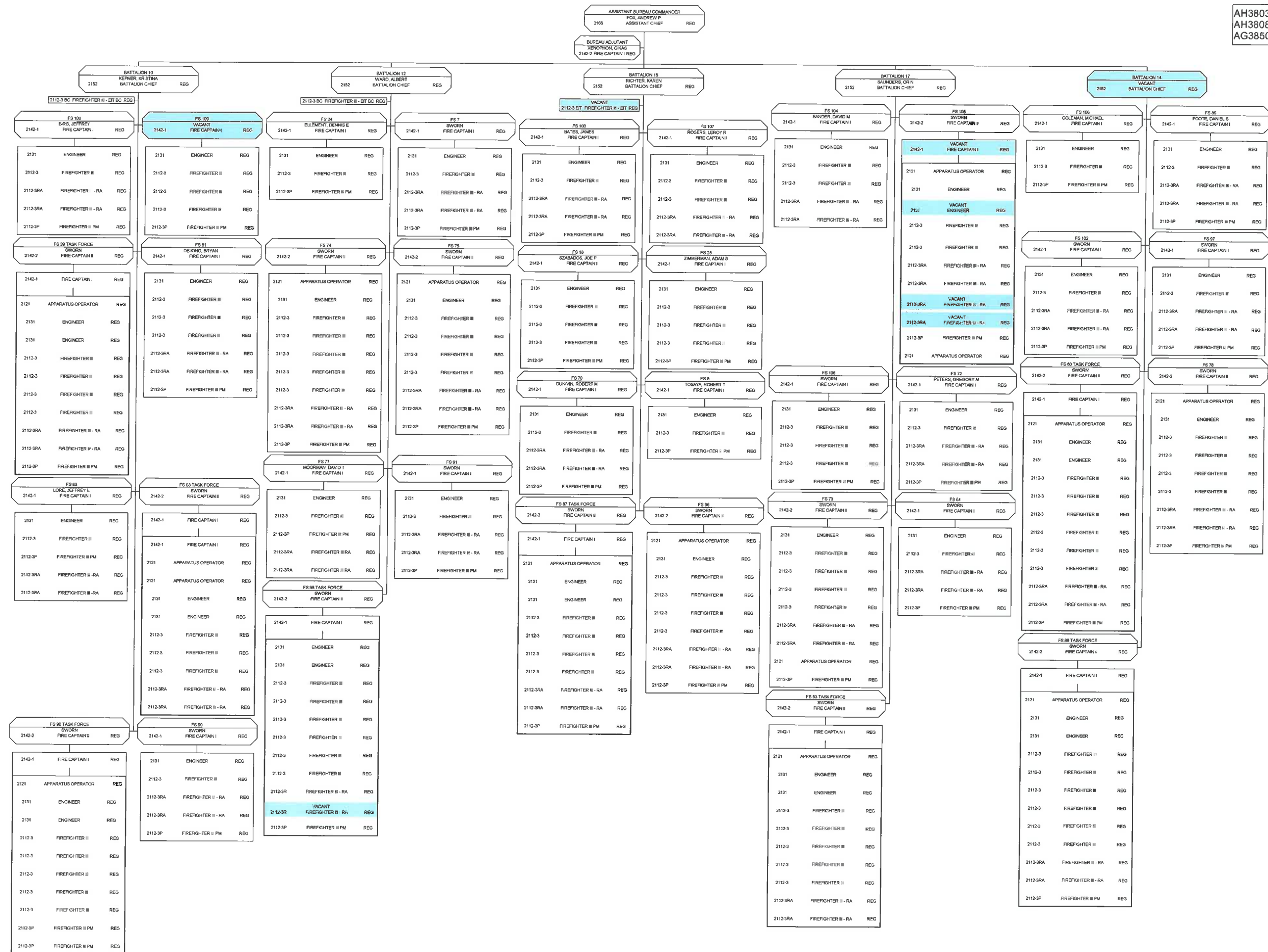
# OPERATIONS VALLEY BUREAU

AH3803 Fire Suppression  
AH3808 Emergency Medical Services  
AG3850 General Admin & Support





AH3803 Fire Suppression  
AH3808 Emergency Medical Services  
AG3850 General Admin & Support

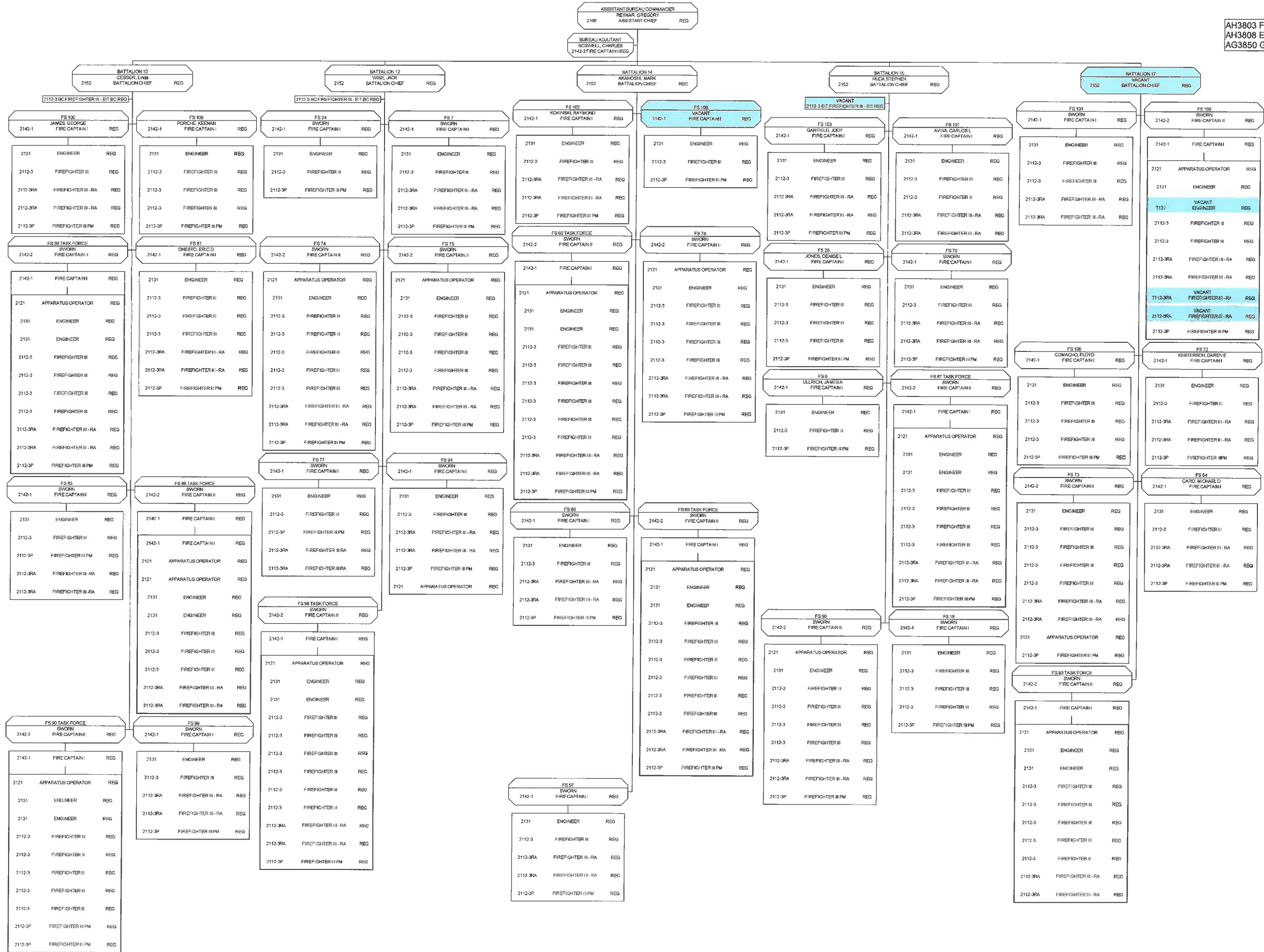




|  |
|--|
| AH3803 Fire Suppression<br>AH3808 Emergency Medical Services<br>AG3850 General Admin & Support |
|--|



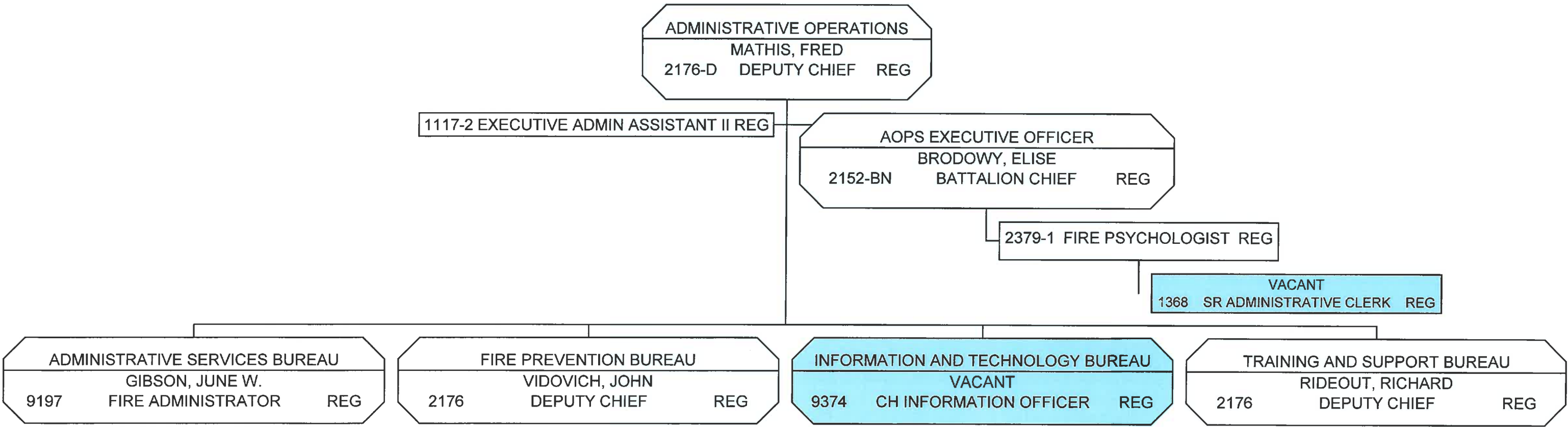
OPERATIONS VALLEY BUREAU - SHIFT C



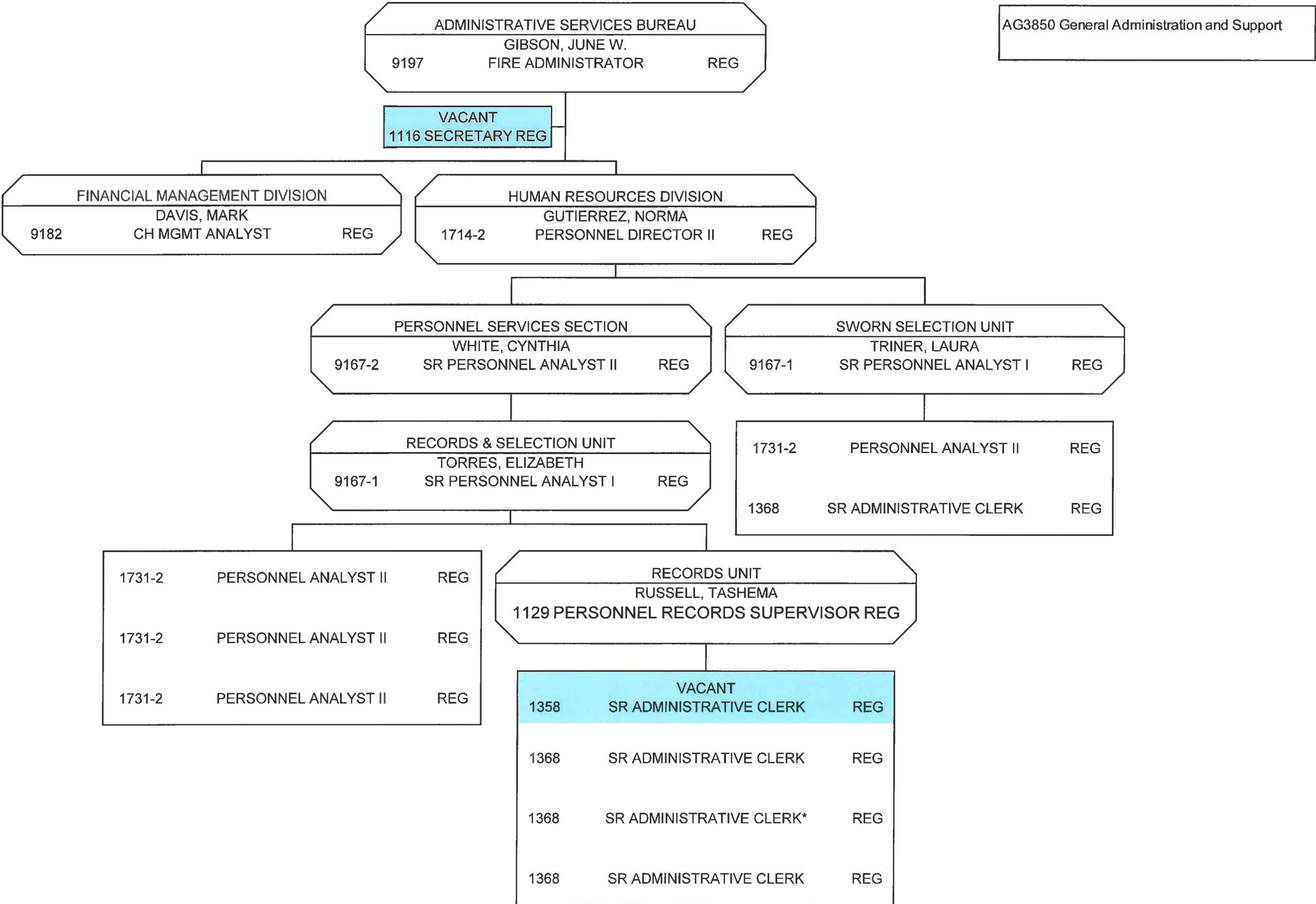
AH3803 Fire Suppression  
AH3808 Emergency Medical Services  
AG3850 General Admin & Support

# ADMINISTRATIVE OPERATIONS

AG3850 General Administration and Support



# ADMINISTRATIVE SERVICES BUREAU



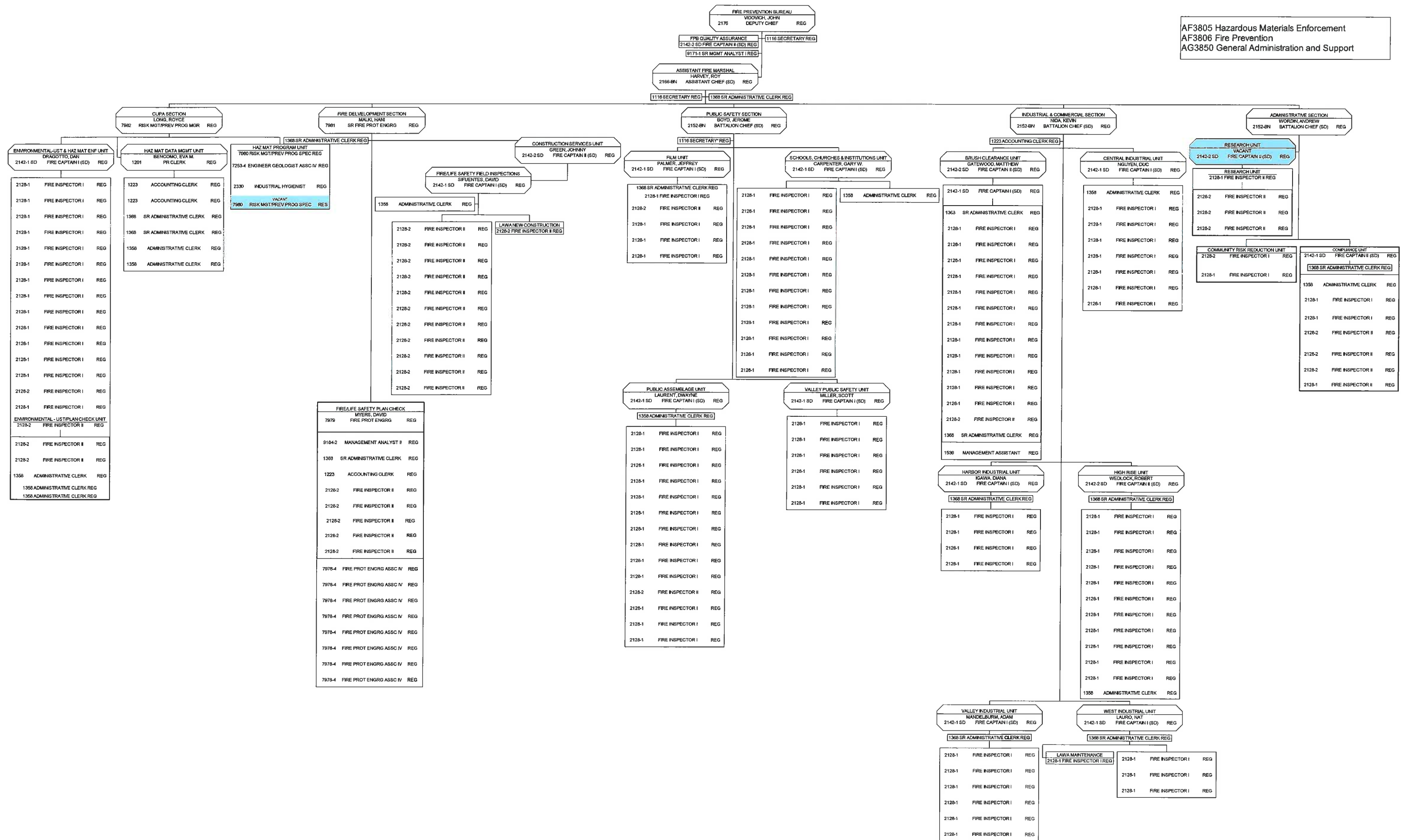
AG3850 General Administration and Support



## AG3850 General Administration and Support



# FIRE PREVENTION AND PUBLIC SAFETY BUREAU



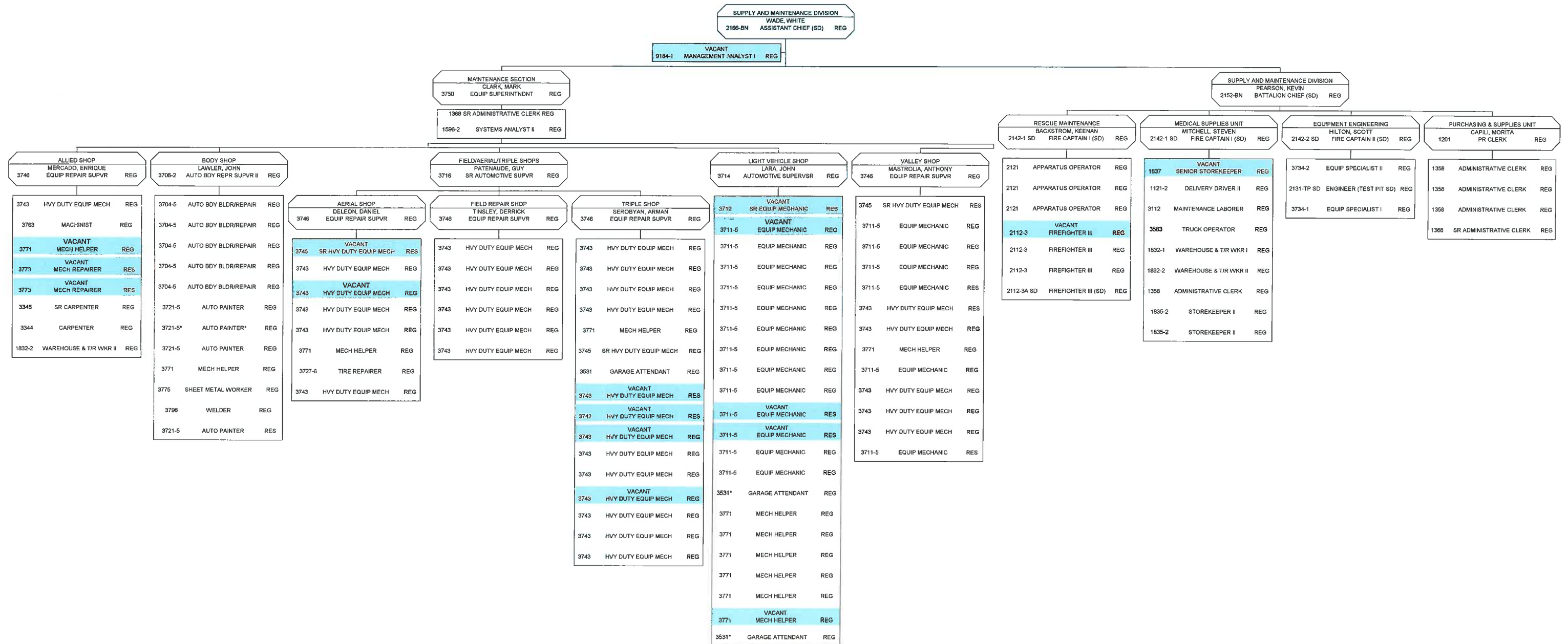
AG3847 Training  
AG3850 General Administration and Support  
AF3805 Hazardous Materials Enforcement





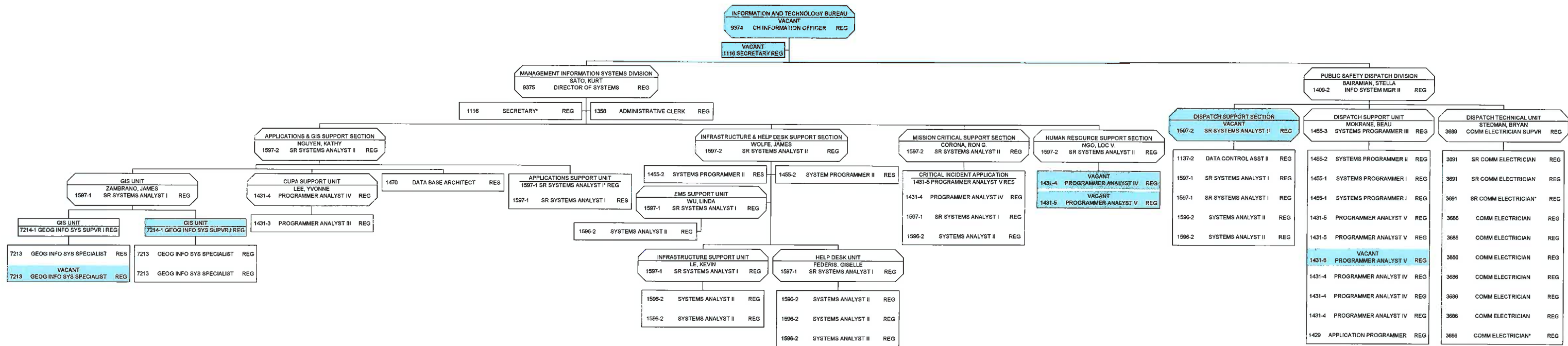
## TRAINING AND SUPPORT BUREAU - SUPPLY AND MAINTENANCE DIVISION

AG3848 Procurement, Maintenance and Repair  
AG3850 General Administration and Support  
AG3847 Training  
AF3805 Hazardous Materials Enforcement



# INFORMATION AND TECHNOLOGY BUREAU

AG3849 Technology Support  
AG3850 General Administration and Support  
AC3804 Metropolitan Fire Communications



# EMERGENCY MEDICAL SERVICES BUREAU

AH3803 Fire Suppression  
AH3808 Emergency Medical Services  
AG3850 General Admin & Support

