

**BOARD REPORT
CITY OF LOS ANGELES
DEPARTMENT OF TRANSPORTATION**

Date: December 14, 2023

To: Board of Transportation Commissioners

From: Laura Rubio-Cornejo, General Manager 
Department of Transportation

Subject: **PROPOSED OVERNIGHT PARKING RESTRICTIONS FOR PARKING LOT NOS. 622, 640,
AND 665**

SUMMARY

The Los Angeles Department of Transportation (LADOT) recommends a change to the hours of operation for Parking Lot Nos. 622 and 640 in Reseda, and Parking Lot No. 665 in the Vermont Vista area.

RECOMMENDATION

That the Board:

AUTHORIZE LADOT to change the hours of operation for LADOT Parking Lot Nos. 622 and 640 in Reseda, and Lot No. 665 in Vermont Vista area to include an overnight parking restriction from 12:00 AM to 6:00 AM nightly with an option to issue overnight parking permits upon LADOT's determination.

BACKGROUND

Lot No. 622 is a surface lot located at 7131 Canby Avenue, Reseda in Council District (CD) 3. The parking lot is adjacent to commercial properties (see Attachment "A"). The lot has a total of 62 parking spaces consisting of 34 two-hour spaces, 24 ten-hour spaces, and four disabled spaces. The lot is open and free to the public daily with a ten-hour time limit between 8:00 AM to 6:00 PM except on Sundays.

Lot No. 640 is a surface lot located at 7130 Darby Avenue, Reseda in CD 3. The parking lot is adjacent to commercial properties and near residential properties (see Attachment "A"). The lot has a total of 46 parking spaces consisting of 44 ten-hour spaces and two disabled spaces. The lot is open and free to the public daily with a ten-hour time limit between 8:00 AM to 6:00 PM except on Sundays.

Lot No. 665 is a surface lot located at 323 W. 87th Street in the Vermont Vista area of CD 8. The parking lot is adjacent to commercial properties and near residential homes (see Attachment "B"). This lot is currently closed to the public, but is being utilized by an affordable housing developer through a revocable permit. During normal operation, the lot is open and free to the public daily with a ten-hour time limit between 8:00 AM to 6:00 PM except on Sundays.

Pursuant to LAMC Sections 88.54 and 88.55, the Board is authorized to determine the rates, maximum legal parking time, and the hours of operation for all publicly owned off-street parking facilities under the control of LADOT.

DISCUSSION

LADOT is dealing with vandalism, trash, and encampments on multiple public parking lots. For Parking Lot Nos. 622 and 640, CD 3, LADOT, and Los Angeles Police Department (LAPD) received numerous complaints regarding encampments and vehicle dwellings interfering with the operation of the parking lots and affecting the safety of the patrons parking at those lots. On October 26, 2023, LADOT received the attached letter from Councilmember Blumenfield requesting to establish closure hours of 12:00 AM to 6:00 AM (see Attachment "C"). For Lot No. 665, LADOT received complaints that multiple encampments and vehicle dwellings at the lot interfered with the operation of the lot. When LADOT's contractor attempted to maintain the parking lot, people living on the lot threatened them. See Attachment "D" for photos of the subject parking lots.

The Council offices, with the assistance of LAPD, LADOT, LA Sanitation, LA Homeless Services Authority, and others worked together to clear and clean the lots, but the unhoused individuals return soon after to occupy the lots. The continued presence of encampments combined with aggressive behavior created situations where lot maintenance cannot be completed, and the public do not feel safe to park in the lots. Based on a prior consultation with the City Attorney, a determination was made that the City can close the parking lot to the public with proper posted signage that would allow the City to cite and/or remove any trespasser(s) and impound attended and unattended personal property [subject to noticing and storage compliance as outlined in Los Angeles Municipal Code (LAMC) Section 56.11] if found in violation of the posted parking lot closure hours.

To help address the issues at these lots, LADOT recommends closing the parking lots nightly with an overnight parking restriction from 12:00 AM to 6:00 AM daily. These hours would cause the least impact to the operation of the lot and the needs of the community while addressing the operational and safety concerns regarding the parking lot. The appropriate signage, as stated above, allows the City to cite and/or remove any trespassers and impound attended and unattended personal property. Any valid need to park at Lot Nos. 622, 640, and 665 during the closure hours can be met by overnight parking permits issued under the purview of LADOT.

FISCAL IMPACT STATEMENT

There is no impact to the General Fund. There is a minimal impact to the Special Parking Revenue Fund for the fabrication and installation costs of the new parking lot signs.

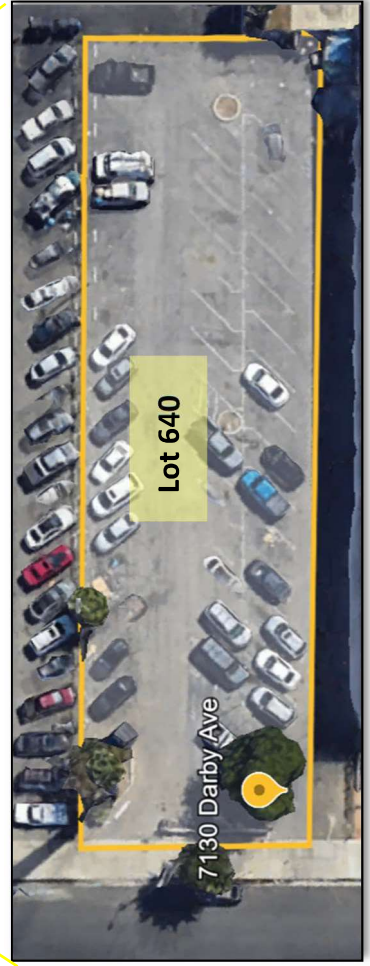
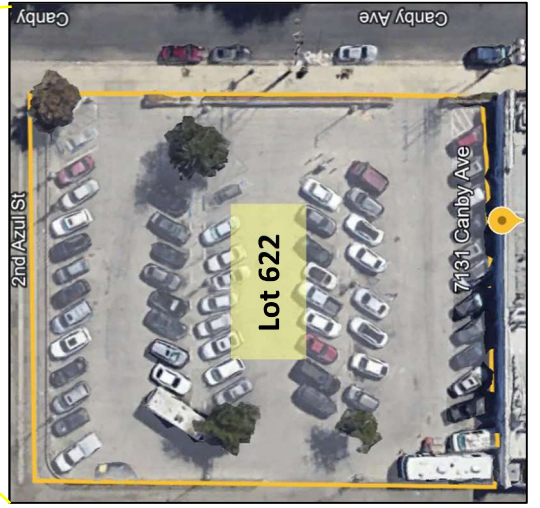
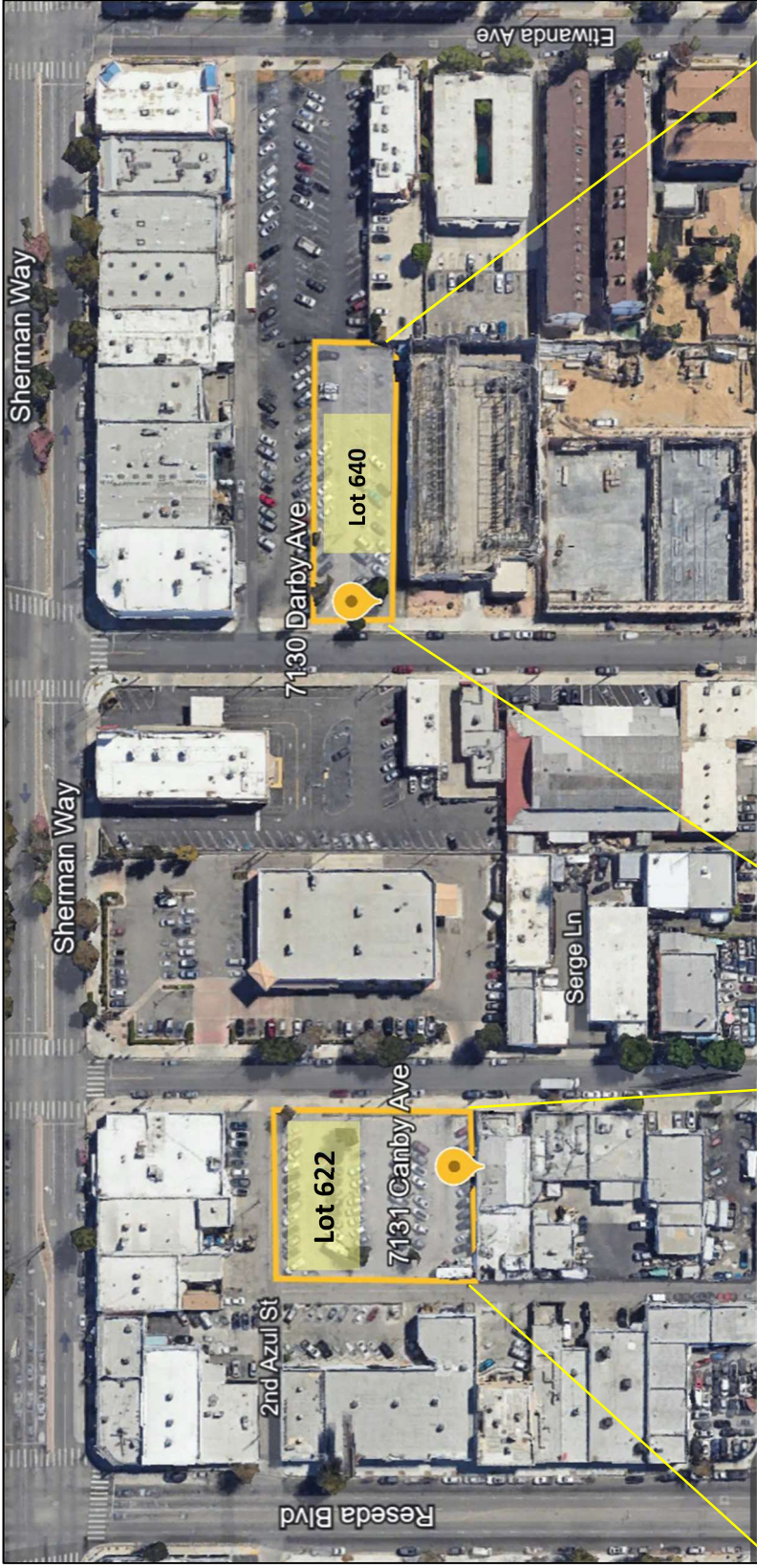
LRC:MC:sb

Attachments

c: Lisa Hansen, CD 3
Solomon Rivera, CD 8

ATTACHMENT "A"

PARKING LOT NOS. 622 & 640 – AERIAL VIEW



ATTACHMENT "B"

PARKING LOT NO. 665 – AERIAL VIEW



ATTACHMENT "C"



BOB BLUMENFIELD

Councilmember, Third District

October 26, 2023

Ken Husting
Bureau of Parking Management
Department of Transportation
100 South Main Street, 10th Floor
Los Angeles, CA 90012

Re: Closure Hours for LADOT Lots 622 and 640

Dear Mr. Husting:

I respectfully request that the Department of Transportation (LADOT) and the Transportation Commission to establish closure hours of midnight to 6 am at the following two LADOT parking lots:

Canby & Sherman Way Parking Lot
7131 Canby Ave, Reseda CA
LADOT Facility No: 622

Darby & Sherman Way Parking Lot
7130 Darby Ave, Reseda CA
LADOT Facility No: 640

These parking lots, in Reseda's central business district, provide necessary off-street parking for patrons of local businesses and will become increasingly important as the City and its partners complete renovation of the Reseda Theater and the Reseda Skate Rink on Sherman Way.

However, my staff and I receive numerous complaints from the public regarding encampments and vehicle dwelling interfering with the operation and safety of these parking lots and their patrons. Establishing closure hours will help ensure that the parking lots remain available for their intended purpose. I remain committed to addressing the problem and homelessness, and creating additional permanent and interim housing solutions, including safe parking for vehicular dwelling.

I thank you in advance for your consideration of this request.

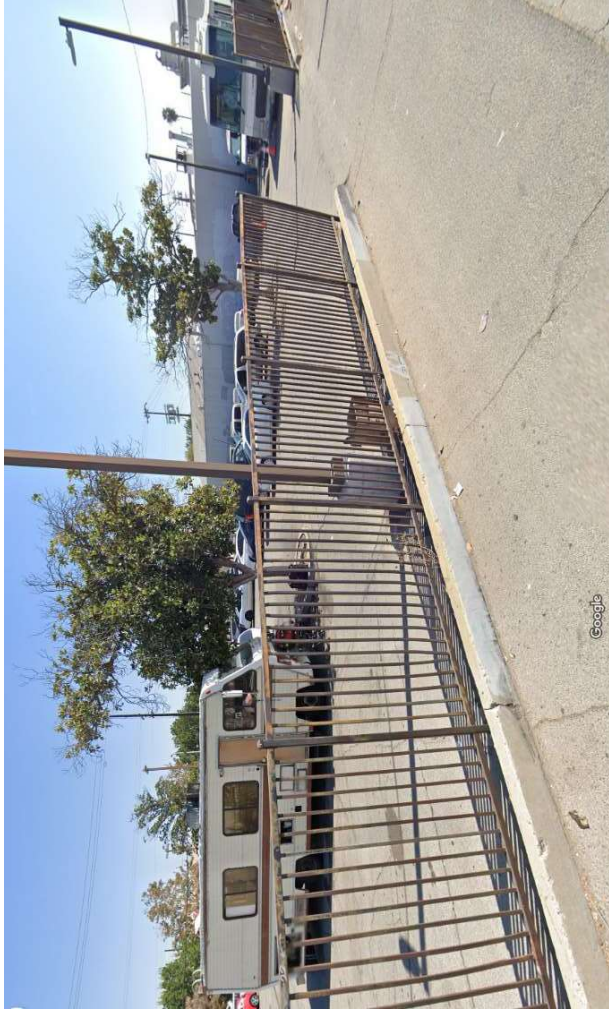
Sincerely,

BOB BLUMENFIELD
Councilmember
City of Los Angeles

ATTACHMENT "D"

PHOTOS OF PARKING LOT NOS. 622, 640, 665

PARKING LOT NO. 622



ATTACHMENT "D" CONTINUED

PARKING LOT NO. 640



PARKING LOT NO. 665

