

LA WiFi Initiative

Town Hall Meetings
September 27, 2007

Randi Levin

General Manager & Chief Technology Officer

City of L.A., Information Technology Agency

Agenda

- Welcome & Introductions
- Background & Project Overview
- Guest Speakers
- Public Comments



Introductions

What is Wi-Fi?

- Wi-Fi provides fast, wireless access to the Internet
- Common uses include:
 - web browsing
 - email
 - mobile data access
 - voice

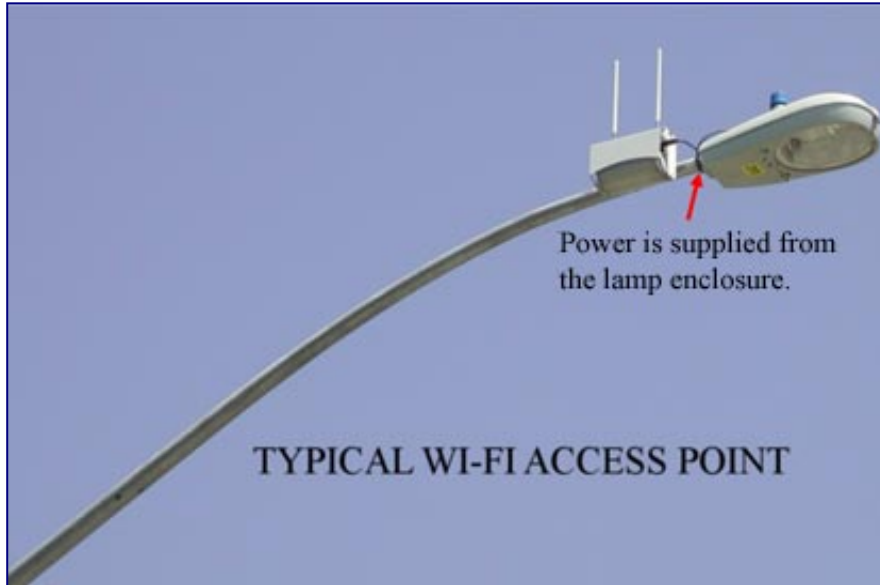


What is Wi-Fi?

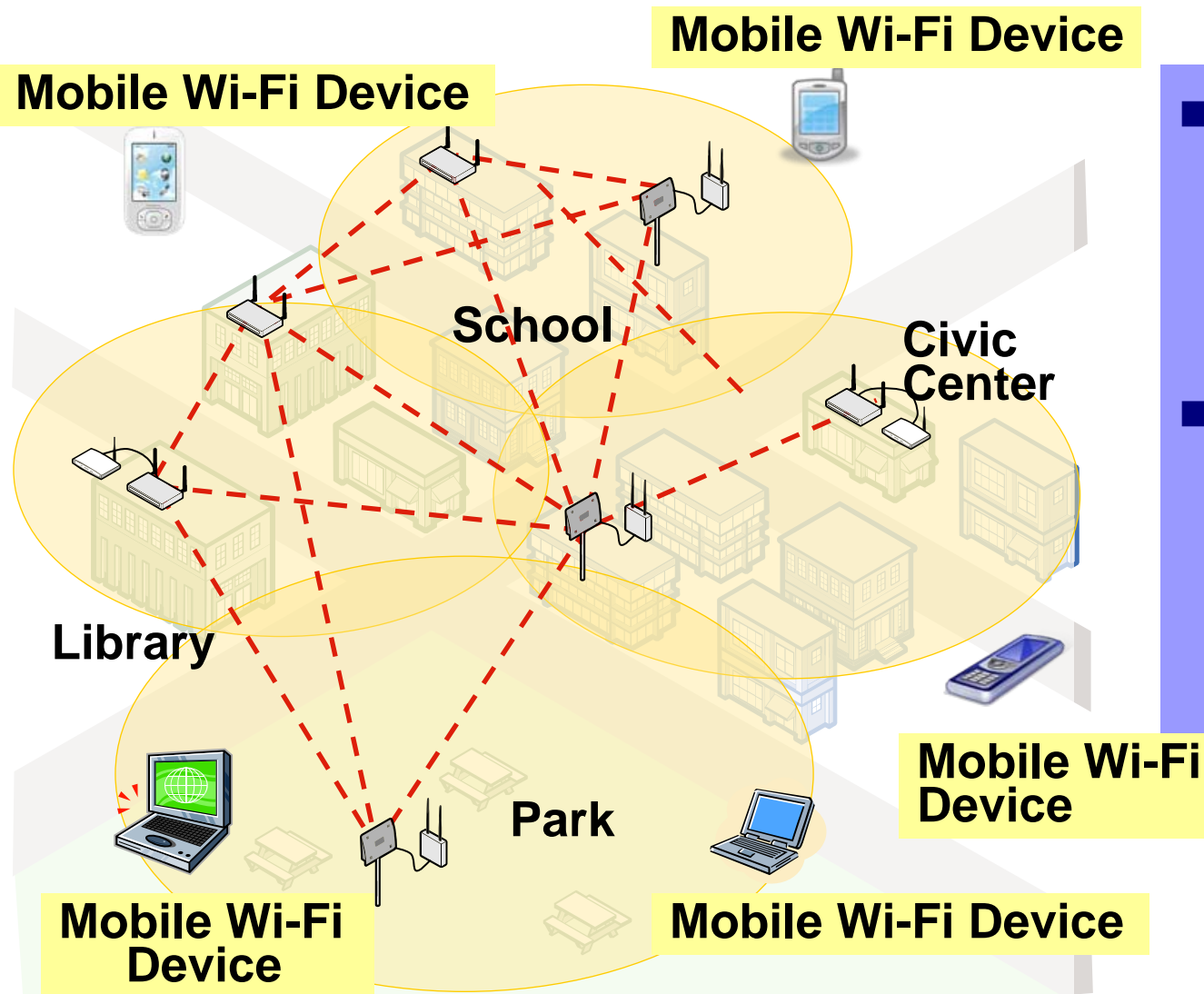
- Wi-Fi is brand owned by the Wi-Fi Alliance to promote interoperability of wireless devices
- Wi-Fi transmits data using radio waves in the unlicensed spectrum



Equipment Mounts on Street Lights and Rooftops

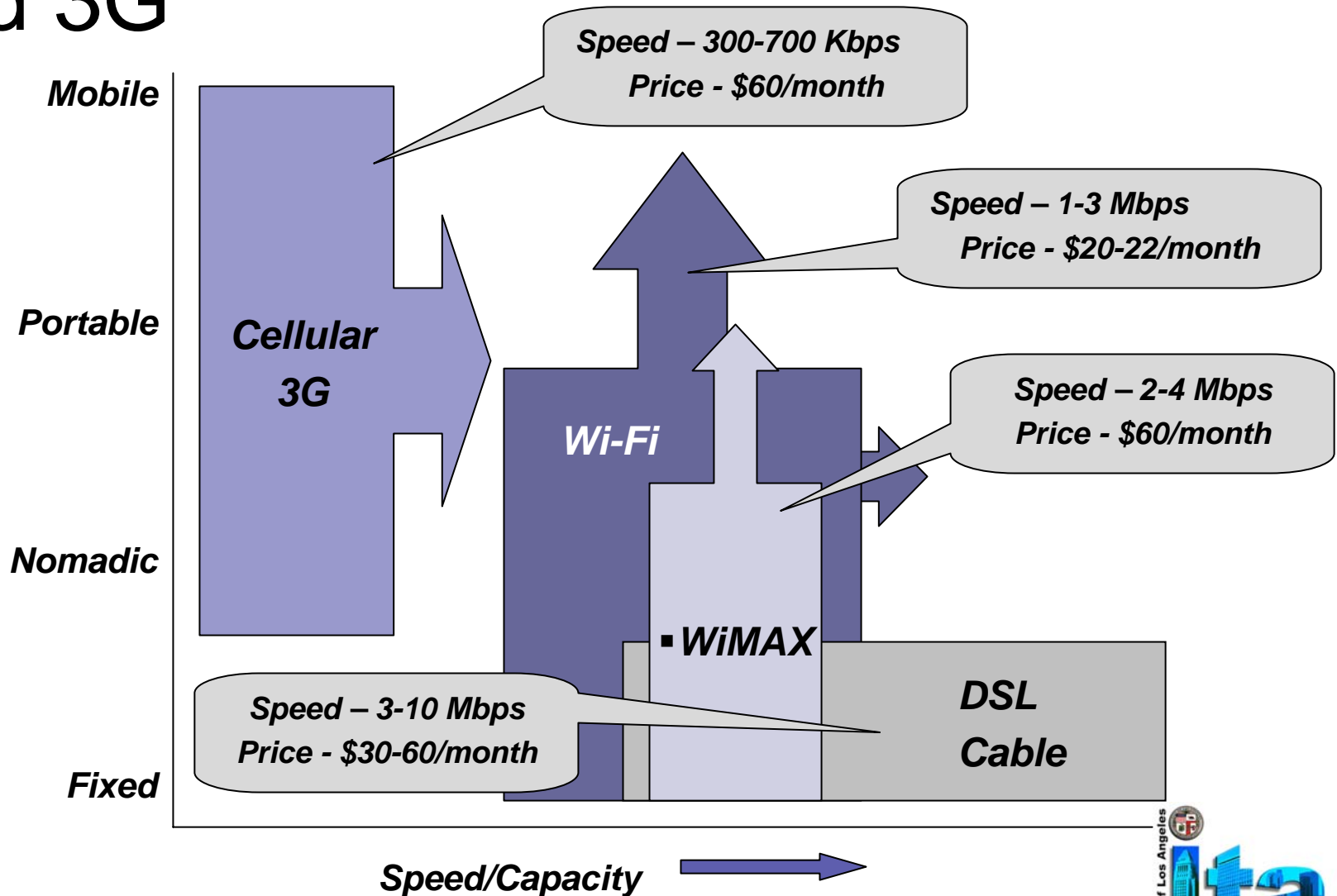


How Wi-Fi Mesh Works



- Multiple wireless access points create a “wireless district”
- Users connect to the network using standard Wi-Fi enabled devices

Relationship Between Wi-Fi, WiMAX and 3G



LA WiFi Initiative

“LA WiFi will help us meet the technology needs of our world-class media and creative industries, give a leg up to small business, plug every neighborhood directly into the knowledge-based global economy, and make computer training programs for students an after-school reality.”

Mayor Antonio Villaraigosa -February 13, 2007

LA WiFi Initiative

“Providing a city-wide wireless telecommunications program is another way of bridging the gap between local government and the communities it serves.”

***Councilmember Tony Cardenas, Chair,
Information Technology and General
Services Council Committee – February 13, 2007***

LA WiFi Goals

- Increase Access to Broadband
 - Fill gaps in affordable high-speed Internet services
- Spur Economic Development
 - Help attract and retain businesses
 - Support travel and tourism
- Bridge “Digital Divide”
 - Technology Training
 - Lease programs for computers
 - Libraries/Community Technology Centers

LA WiFi Goals

- Leverage Technology for Public Safety
 - Wireless Video Surveillance Cameras
 - Remote access to data
- Improve City Services
 - On-line citizen access to services and information
 - Real time inspections and permitting

Examples of Citywide Wi-Fi Initiatives

Deploying

Portland, OR 135 sq. miles
Riverside, CA 85.6 sq. miles
Minneapolis, MN 58 sq. miles

Operational

Philadelphia, PA 135 sq. miles
Corpus Christi, TX 147 sq. miles
Anaheim, CA 49 sq. miles
Saint Cloud, FL 9 sq. miles

Re-evaluating

Silicon Valley Wireless, CA
(39 cities in 4 counties 1,500 sq. miles)
Chicago, IL 234 sq. miles
San Francisco, CA 47 sq. miles
Houston, TX 639 sq. miles
Pasadena, CA 23 sq. miles

Studying

Los Angeles, CA 464 sq. miles
Miami Dade, FL 1,946 sq. miles
Boston, MA 49 sq. miles

City of Los Angeles Metrics/Stakeholders

Metrics -

- 464 sq. miles
- 3.7 million residents
- 34,000 city employees
- 88 neighboring cities (L.A. City 40% of pop.)

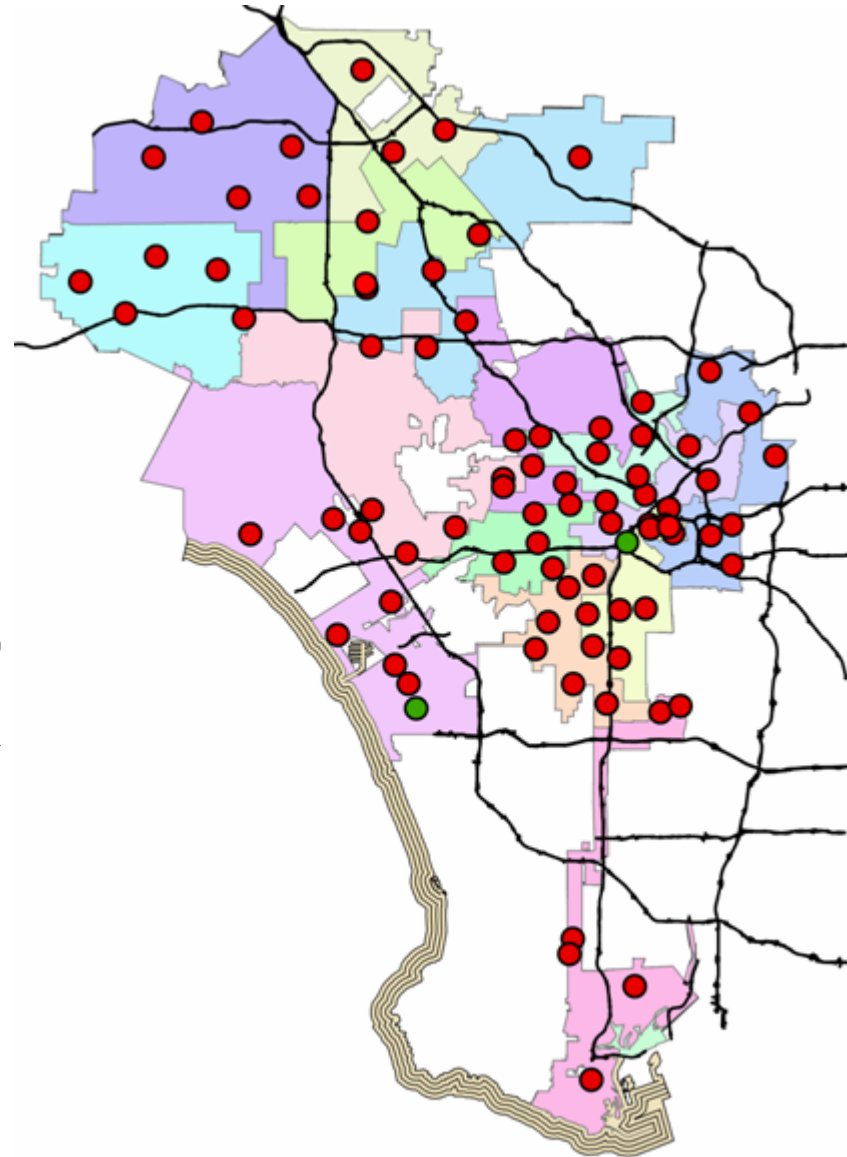
Stakeholders -

- elected officials
- internal agencies & regional partners
- external partners (community & vendors)

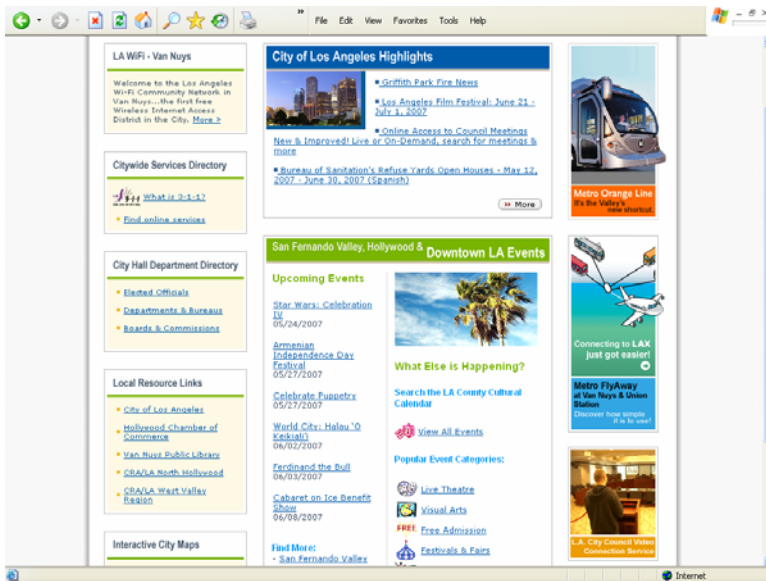
Current Wi-Fi Locations Provided by City

- *72 Library locations - Indoor*
- *Pershing Square*
- *Van Nuys Civic Center*
- *Jordan Downs Housing Project*
- *L.A. Airports - LAX (fee for use)*
- *L.A. Convention Center (fee for use)*

- *Free Public Wi-Fi*
- *Fee Based Wi-Fi*



Improved Citizen Access to City Services and Information



Location Specific City Services

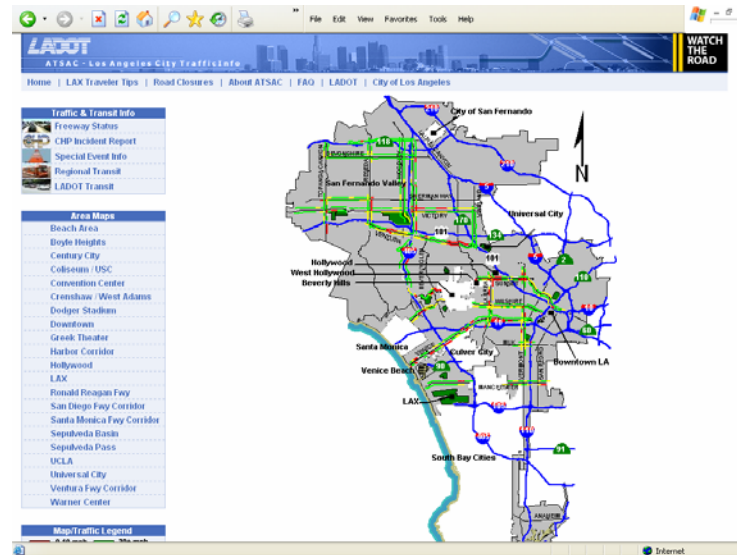
Real-Time Rapid Bus Info

Metro Rapid On Your Cell

How Does it Work?
Selected bus services are equipped with a transponder for vehicle tracking. Using this position information, the Los Angeles Transit Priority System helps buses to stay on schedule and reduce delays on bus routes. Additionally, this data is used to develop the bus arrival predictions in real-time which are made available via the public Internet.

How Can I Access The Bus Arrival Information?
The information can be accessed by any Internet enabled devices such as desktop browsers, cellular phones, PDAs, and other mobile devices.

[Go to rapidbus.net](#)



Real-Time Traffic Info

Examples of Government Use

Municipal Workforce



Code Enforcement
Building Inspection
Field Reporting

Transportation



Traffic Control
Disaster Management
Cameras

Public Works



Work Order Management
Mobile CAD
Citizen Response

Examples of Government Use

Law Enforcement



Video Surveillance
Incident Reporting
AVL

Machine to Machine (M2M)



Parking Meters
Water Meters
Electricity Meters

Fire



Incident management
Hazardous Materials
Building Maps

LA Wi-Fi – Milestones

- Public Announcement of LA Wi-Fi Initiative
February 13, 2007
- Issue RFQ for Wi-Fi Consulting Services
February 14, 2007
- Hired Civitium, June 25, 2007
- Wireless Broadband Study & Community Outreach, Summer - Fall 2007

LA Wi-Fi – Next Steps

- Report to Mayor/Council
Fall – Winter 2007
- Issue RFP to Build Network/Select Vendor
TBD
- Contract Execution
TBD
- Begin Proof of Concept/Build-Out
TBD



Guest Speakers

LA WiFi Townhall Objectives

- Provide an opportunity for input on LA WiFi and how best to expand wireless services to L.A.'s neighborhoods and communities
- To express what the communities broadband needs are
- To provide input on what the City's role should be
- To identify issues that the City should take into consideration when formulating its direction

Ground Rules For Participation

- Each Speaker will be allowed 3 minutes for public comment

- Written comments are encouraged, Please submit any comments:
 - at today's town hall meeting or
 - via email: LAWiFi@lacity.org



www.lawifi.lacity.org