

# L.A. Wi-Fi

## Wireless Broadband Study & Community Outreach

***Randi Levin, CTO***

***City of L.A., Information Technology Agency***

***September 10, 2007***

# Agenda

- Municipal Wi-Fi Background & Trends
- L.A. Wi-Fi Goals
- City of Los Angeles Metrics/Stakeholders
- Accomplishments
- Project Milestones
- Stakeholder Outreach

# Market Overview



## Updated: August 2007 list of US cities and counties with WiFi

On 1 August 2007 I updated the list of US cities and counties with wireless networks (as well as those with networks in deployment or planning stages). Download the PDF from [here](#).

**Attention journalists:** there is now a Muniwireless FAQ page to answer 99% of your questions. Please go to: <http://isolde100.backpackit.com/pub/1182845>

As of 1 August 2007, there were **415 cities and counties in the US** in the deployment / planning phase and with networks up and running. If you add the number of cities and counties that are seriously considering municipal Wi-Fi, that number rises to 455.

If there are any inaccuracies in this list or if I missed your city or county, please let me know by posting a comment in the Comments Box below.

Type of network	Jul 2005	Feb 2006	Apr 2006	Jun 2006	Sep 2006	Dec 2006	Mar 2007	Aug 2007
Region/citywide	38	56	58	59	68	79	81	92
City hotzones	22	29	32	32	43	48	57	68
Muni or public safety use only	28	32	35	35	35	36	38	40
Planned deployments	34	59	69	121	135	149	164	215
<b>Total</b>	<b>122</b>	<b>176</b>	<b>194</b>	<b>247</b>	<b>281</b>	<b>312</b>	<b>340</b>	<b>415</b>

# Recent Market Developments

- EarthLink's scaling back workforce & investment in the municipal Wi-Fi market
- Other providers struggling to raise private capital
- Chicago unable to reach terms with EarthLink & AT&T
- Trend towards business models where public and private sector share more risk
- Government use needed to strengthen business case

# Examples of Citywide Wi-Fi Initiatives

## Deploying

Portland, OR 135 sq. miles  
Riverside, CA 85.6 sq. miles  
Minneapolis, MN 58 sq. miles  
Pasadena, CA 23 sq. miles

## Operational

Philadelphia, PA 135 sq. miles  
Corpus Christi, TX 147 sq. miles  
Anaheim, CA 49 sq. miles  
Saint Cloud, FL 9 sq. miles

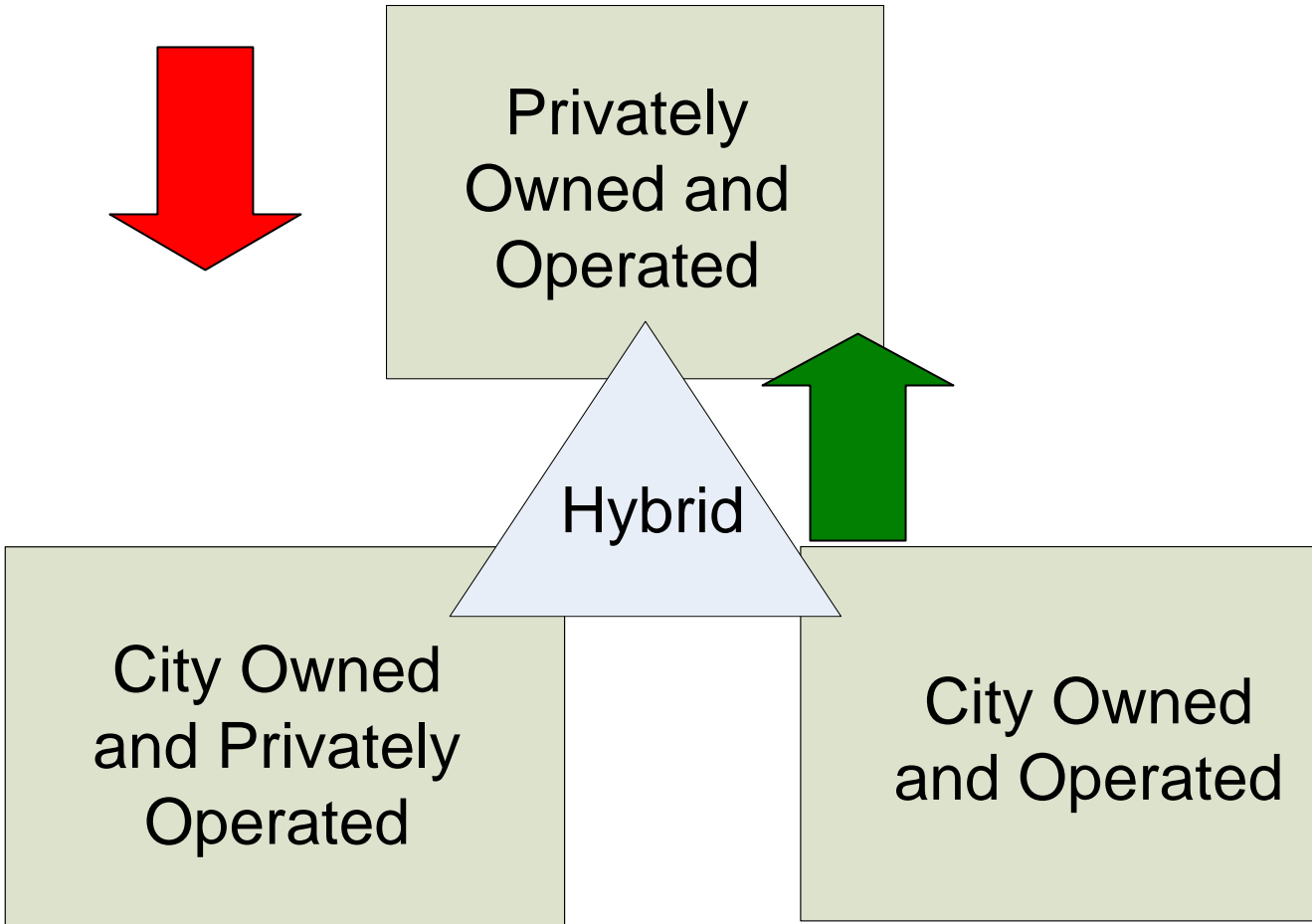
## Re-evaluating

Silicon Valley Wireless, CA  
(39 cities in 4 counties 1,500 sq. miles)  
Chicago, IL 234 sq. miles  
San Francisco, CA 47 sq. miles  
Houston, TX 639 sq. miles

## Studying

Los Angeles, CA 470 sq. miles  
Miami Dade, FL 1,946 sq. miles  
Boston, MA 49 sq. miles

# Municipal Wireless Business Models



# L.A. WiFi Goals

- Increase Access to Broadband
- Spur Economic Development
- Bridge “Digital Divide”
- Leverage Technology for Public Safety
- Improve City Services

# City of Los Angeles Metrics/Stakeholders

## **Metrics -**

- 464 sq. miles
- 3.7 million residents
- 34,000 city employees
- 88 neighboring cities (L.A. City 40% of pop.)

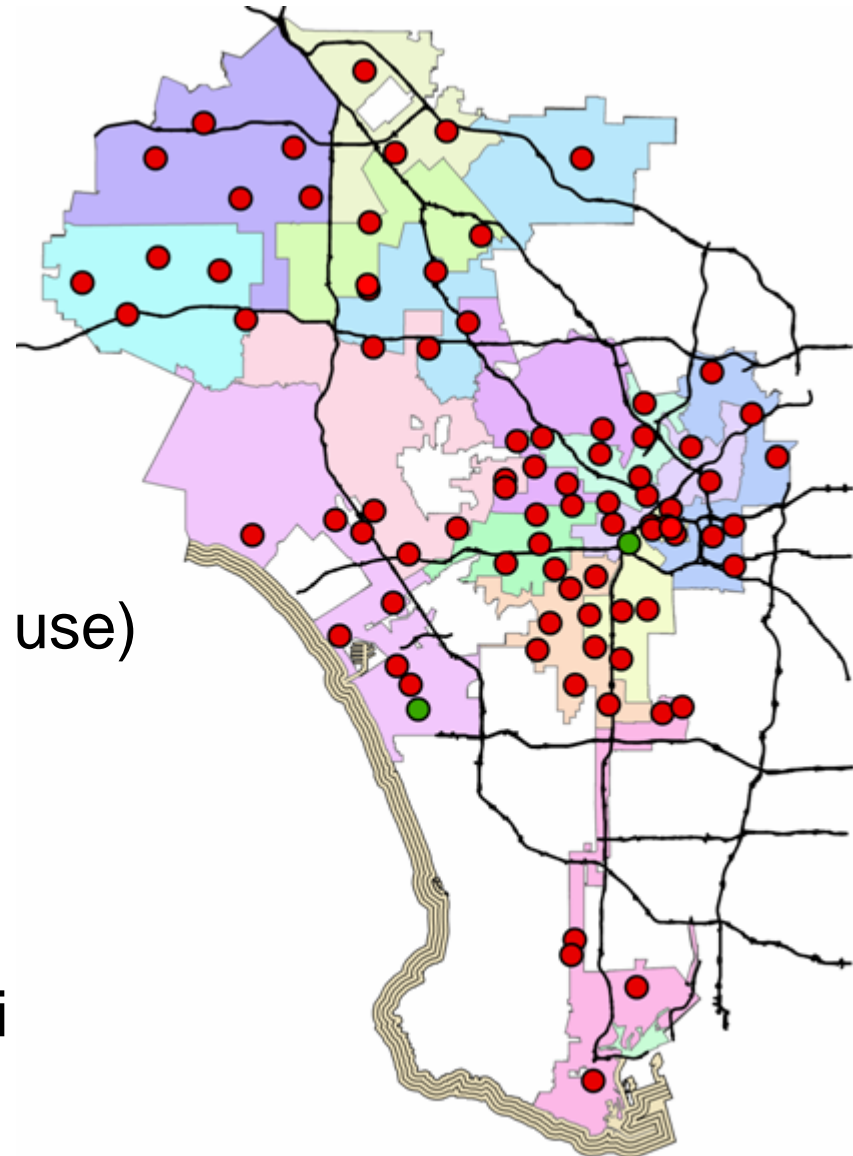
## **Stakeholders -**

- elected officials
- internal agencies & regional partners
- external partners (community & vendors)

# Current Wi-Fi Locations Provided by City

- 72 Library locations
- Pershing Square
- Van Nuys Civic Center
- Jordan Downs Housing Project
- L.A. Airports - LAX (fee for use)
- L.A. Convention Center (fee for use)

- Free Public Wi-Fi
- Fee Based Wi-Fi



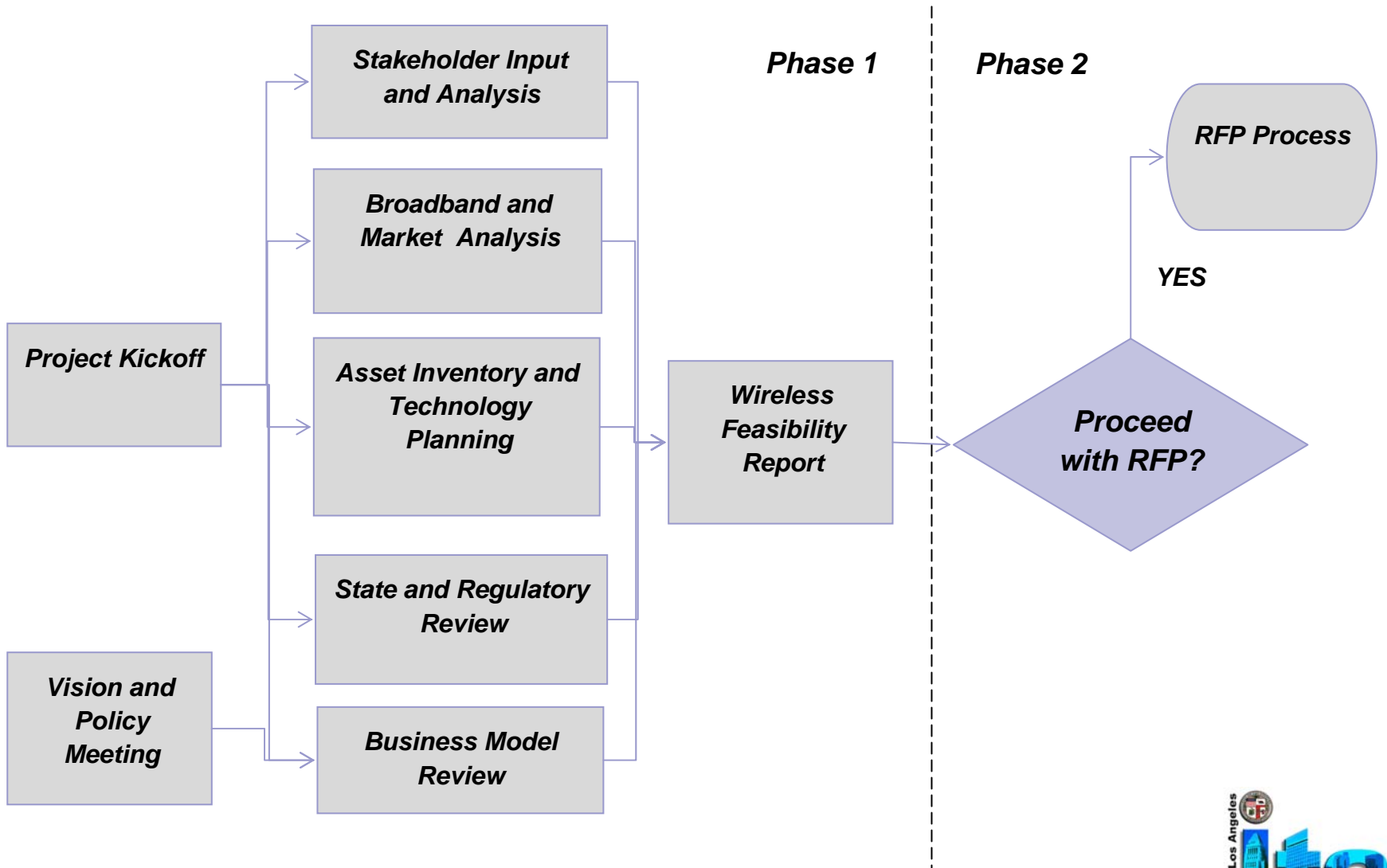
# L.A. Wi-Fi – Milestones

- Public Announcement of LA Wi-Fi Initiative  
February 13, 2007
- Issue RFQ for Wi-Fi Consulting Services  
February 14, 2007
- Hired Civitium  
June 25, 2007
- Wireless Broadband Study & Community Outreach  
Summer 2007

# LA Wi-Fi – Milestones continued:

- Report to Mayor/Council  
Fall - Winter 2007
- Issue RFP for build out of Network/Select Vendor  
TBD
- Contract Execution  
TBD
- Begin Proof of Concept/Build-out  
TBD

# L.A. WiFi Process



# Stakeholder Outreach Plan

- Internal - City Departments (assets inventory & application needs)
- External - Focus Group Meetings (e.g. community, regional municipalities, business, education etc.)
- Web Site, Email & Online Survey(s)



<http://www.lawifi.lacity.org/>