



AGENDA

Regular Board Meeting
Tuesday, August 20th, 2024 at 7:00PM
Toluca Lake Elementary School – Auditorium
4840 Cahuenga Blvd., North Hollywood CA 91601



Supporting documents available at [GTLNC.org](https://www.gtlnc.org).

For public comments, please fill out a separate speaker card for each agendized item on which you wish to be heard. Up to two (2) minutes per speaker.

1. Call to Order. Roll call. Announcements.
2. Brown Act Public Comments on non-agenda items only. Please fill out a speaker card.
3. Update from Community, City, Regional and State Representatives.
4. Approve June 18th, 2024 Board Meeting Minutes.
5. Election of successor board members to fill vacated seats. President’s Nominees: Federico Figus and Lindey Lambert. Attachments 1 and 2.
6. Election of Officers (retroactive to term of office year commencing July 1st, 2024).

6.1 President *	Nominated: Tess Taylor
6.2 Vice President	Nominated: Doug Hamblin
6.3 Treasurer **	Nominated: Arthur Wypchlak
6.4 Secretary	Nominated: [position vacant]
6.5 Alternate Secretary	Nominated: Paul Hartel

*Secondary bank signatory and primary bank card holder; **secondary bank card holder.
7. Appointment of Community Impact Statement filers of the Board.
8. Appointment (or re-appointment) of Committee Chairs.

8.1 Governmental Affairs	Nominated: Doug Hamblin
8.2 Outreach & Elections	Nominated: Tim Micsko
8.3 Planning and Land Use	Nominated: Paul Hartel
8.4 Public Safety	Nominated: Shawn Besharaty
9. Proposed Resolution opposing City of Los Angeles Planning Department proposal of three draft ordinances to increase density (Attachment 3):
 1. Draft Citywide Housing Incentive Program Ordinance (CPC-2023-7068-CA);
 2. Draft Housing Element Sites and Minimum Density Ordinance (CPC-2024-387-CA); and
 3. Draft Resident Protections Ordinance (CPC-2024-388-CA).
10. Non code-compliant proposal to permit construction of 6’ tall fences and gates along property line for approx. 156 linear feet at 12 South Toluca Estates Drive in Toluca Lake (Case # ZA-2024-2037-F). (Applicant’s Representative: Chris Parker, Esq.).
LINK: Supporting documents at <https://www.gtlnc.org/>
LINK: <https://planning.lacity.gov/pdiscaseinfo/search/casenummer/ZA-2024-2037-F>
11. Proposed Resolution to oppose City of Los Angeles proposed Sewer Service Charge rate increase of \$700 million over the next four years. Attachment 4.

Tuesday, August 20th, 2024

12. Proposed Resolution to oppose Council File 24-0867 (Rodriguez) Neighborhood Council Bylaws / Youth Participation / Diversity Increase / Leadership Growth which interferes with neighborhood council by-laws, seeks increased control over neighborhood councils, and is unwarranted intrusion. Attachment 5.
13. Consent calendar to approve the following items with supporting documents attached. The NC Funding Clerk has requested, despite the lifting of system wide Neighborhood Council budget rollover limitation, that all payments previously approved by GTLNC but not yet remitted within the 23/24 fiscal year be re-approved for the 24/25 fiscal year.
 - 13.1 June 2024 GTLNC Monthly Expenditure Report. Attachment 6.
 - 13.2 July 2024 GTLNC Monthly Expenditure Report.
 - 13.3 Re-approve remitting up to \$268.00 to pay Traffic Signal Cabinet artist Christine Geltz for Certificate of Insurance as required by the City of Los Angeles under the Neighborhood Council Funding Program Policies and Guidelines dated April 8th, 2019 (Policy 2.5: Expenditures of Community Improvement Projects). Attachment 7.
 - 13.4 Re-approve remitting up to \$268.00 to pay Traffic Signal Cabinet artist Katie Sunderalingham for Certificate of Insurance as required by the City of Los Angeles under the Neighborhood Council Funding Program Policies and Guidelines dated April 8th, 2019 (Policy 2.5: Expenditures of Community Improvement Projects). Attachment 8.
 - 13.5 Re-approve remitting up to \$6,000.00 for GTLNC mailers to residents and businesses.
 - 13.6 Re-approve remitting up to \$1,500.00 Neighborhood council-specific Web site designer Wendy L. Moore of MooreBusinessResults.com for GTLNC administrative and marketing support including outreach, websites, social media, digital communication and content creation.
 - 13.7 Approve up to \$76.80 for AppleOne Employment Agency invoice: \$76.80 for period ending June 30th, 2024.
14. Committee Reports.
 - 14.1 Treasurer's Report. (Arthur Wypchlak, Treasurer)
 - 14.2 Government Affairs. (Doug Hamblin, Chair)
 - 14.3 Outreach and Elections. (Tim Micsko, Chair)
 - 14.4 Planning and Land Use. (Paul Hartel, Chair)
 - 14.5 Public Safety. (Shawn Besharaty, Chair)
15. Information Items.
 - 15.1 GTLNC has one board seat opening. Deadline to apply at GTLNC.org: Tuesday, September 17th, 2024 at 6:00PM PST.
16. Old Business.
17. New Business.
18. Next meeting: Tuesday, July September 17th, 2024 at 7:00PM at Toluca Lake Elementary School, Auditorium, at 4840 Cahuenga Blvd., North Hollywood CA.
19. Adjournment.

Tuesday, August 20th, 2024

2024 GTLNC Meeting Schedule

1st Monday at 6:00PM - Public Safety
1st Tuesday at 6:00PM - Governmental Affairs
2nd Monday at 7:00PM - Planning and Land Use
2nd Tuesday at 7:00PM - Outreach & Elections
3rd Tuesday at 7:00PM - Regular Board Meeting

All meetings take place at Toluca Lake Elementary School at 4840 Cahuenga Blvd., N. Hollywood, CA 91601. Committee meetings are in Room 17, regular board meetings in auditorium. Committee meetings occasionally meet via Zoom, check GTLNC.org for details.

PUBLIC INPUT AT NEIGHBORHOOD COUNCIL MEETINGS: Comments from the public on agenda items will be heard only when respective item is considered. Comments from the public on other matters not appearing on the agenda that are within the Board’s jurisdiction will be heard during General Public Comment period. Please note that under the Brown Act, the Board is prevented from acting on a matter that you bring to its attention during the General Public Comment period; however, the issue raised by a member of the public may become the subject of a future Board meeting. Public comment is limited to 2 minutes per speaker, unless adjusted by presiding officer of the Board.

PUBLIC POSTING OF AGENDAS - GTLNC agendas are posted for public review as follows:

- Discovery Store (Community Kiosk), at the Southeast corner of Forman Ave. and Riverside Dr.;
- [GTLNC.org](https://www.gtlnc.org); or
- You can also receive our agendas via email by subscribing to L.A. City’s Early Notification System at <https://www.lacity.org/government/subscribe-agendasnotifications/neighborhood-councils>

THE AMERICANS WITH DISABILITIES ACT: As a covered entity under Title II of the Americans with Disabilities Act, the City of Los Angeles does not discriminate on the basis of disability and, upon request, will provide reasonable accommodation to ensure equal access to its programs, services and activities. Sign language interpreters, assistive listening devices and other auxiliary aids and/or services, may be provided upon request. To ensure availability of services, please make your request at least 3 business days (72 hours) prior to the meeting you wish to attend by contacting Board Secretary via email at media@gtlnc.org.

PUBLIC ACCESS OF RECORDS: In compliance with Government Code section 54957.5, non-exempt writings that are distributed to a majority or all of the board in advance of a meeting may be viewed at [GTLNC.org](https://www.gtlnc.org) or at the scheduled meeting. In addition, if you would like a copy of any record related to an item on the agenda, please contact Board Secretary via email at media@gtlnc.org

RECONSIDERATION AND GRIEVANCE PROCESS: For information on the GTLNC’s process for board action reconsideration, stakeholder grievance policy, or any other procedural matters related to this Council, please consult the GTLNC Bylaws. The Bylaws are available at our Board meetings and our website [GTLNC.org](https://www.gtlnc.org)

SERVICIOS DE TRADUCCION: Si requiere servicios de traducción, favor de avisar al Concejo Vecinal 3 días de trabajo (72 horas) antes del evento. Si requiere servicios de traducción, favor de avisar al Concejo Vecinal 3 días de trabajo (72 horas) antes del evento. Por favor contacte Secretary, o por correo electrónico at media@gtlnc.org para avisar al Concejo Vecinal.

NOTICE TO PAID REPRESENTATIVES: If you are compensated to monitor, attend, or speak at this meeting, City law may require you to register as a lobbyist and report your activity. See Los Angeles Municipal Code Section 48.01 et seq. More information is available at ethics.lacity.org/lobbying. For assistance, please contact the Ethics Commission at (213) 978-1960 or ethics.commission@lacity.org

CONSENT CALENDAR: Every item on the Consent Calendar is considered bundled and voted on as a single item. If a Board Member or Stakeholder has an objection to an item being on the Consent Calendar or wishes to pull an item, they need to raise that objection to an item and ask to have that item or items considered separately. There will be no discussion or comment on the substance of any item unless it is removed from the Consent Calendar. Removed items will be moved to end of the agenda for consideration, or earlier within discretion of Chair.

Attachment 1

Item 5

Greater Toluca Lake Neighborhood Council
Board Member Nominee: Federico Figus

Nominee's Name: Federico Figus

Occupation: Financial Investment / Advisor

Phone: 818-281-0529

Email: figusf@yahoo.com

Stakeholder Status:

Lives within GTLNC boundaries.

How or from whom did you hear about the GTLNC?

From Tess Taylor, Jill Young-Manson, Debby Bartlett

How often do you attend GTLNC meetings? When time permits, but more often recently.

What are your goals for our community?

To fight for a more balanced share of the noise and pollution affecting the south San Fernando Valley. Addressing unwanted multi-house developments in our area, creating and maintaining a safe environment for everyone young and old that call our area home.

What skills do you have that might be especially useful for the GTLNC?

Aviation expert, strong internet and web knowledge, finance and accounting professional, working knowledge of Spanish

Are you prepared to contribute at least ten (10) hours a month to community service through the council? Yes.

What areas of community service particularly interest you?

Anything related to aviation, transportation, real estate

Do you have any interests that might conflict with Neighborhood Council responsibilities? No

Attachment 2

Item 5

Greater Toluca Lake Neighborhood Council

Board Member Nominee: Lindey Lambert

Nominee's Name: Lindey Lambert

Occupation: Life and Business Strategist / social media

Phone: 310-770-2037

Email: lindey@AmuseMedia.us

Stakeholder Status: I live in Greater Toluca Lake

How or from whom did you hear about the GTLNC?

Been to meetings, from the neighborhood newsletter.

How often do you attend GTLNC meetings?

In the past wasn't able, now I am.

What are your goals for our community?

I love the small town feel of Toluca Lake. I want to see our neighborhoods thrive and residential quality of life protected, have traffic laws respected, and build community.

What skills do you have that might be especially useful for the GTLNC?

Sales and marketing, communication (written and verbal) EQ knowledge, knowledge of social media, corporate and small business background

Are you prepared to contribute at least ten (10) hours a month to community service through the council? Yes

What areas of community service particularly interest you?

I grew up here Toluca Lake is very special. Marketing, planning and development community policing, continuing to grow with ole keeping the small town vibe

Do you have any interests that might conflict with Neighborhood Council responsibilities? No

Attachment 3

Item 9

DRAFT RESOLUTION

To be filed with the Offices of Mayor Karen Bass, Council President and Councilmember for Council District 2 Paul Krekorian, Los Angeles City Planning Department

Presented at GTLNC Regular Board Meeting on Tuesday, August 20th, 2024

The Greater Toluca Lake Neighborhood Council opposes the three draft ordinances of the Housing Element of the General Plan Rezoning Program, notifications of which were emailed to residents by the Los Angeles City Planning Department on August 1st, 2024 inviting comment (deadline to comment is Monday, August 26th, 2024):

1. [Draft Citywide Housing Incentive Program Ordinance \(CPC-2023-7068-CA\)](#). (104 pages). Developers, builders and their global investors have already been given massive windfall profits through unjust upzoning and the waiver of our protective building height and density maximums – all of which accelerate the destruction of our residential neighborhoods and degrade our business areas. Now they want more...and have a City and its departments more than willing to give it to them.
2. [Draft Housing Element Sites and Minimum Density Ordinance \(CPC-2024-387-CA\)](#). (9 pages). Since when is “minimum density” ever justified, especially when none of Los Angeles’ residents and voter victims requested it? The Los Angeles City Planning Department’s advocacy for “spot zoning” (universally disfavored in urban planning) promotes a future in which we all live crammed together like sardines, so that a few are grossly and unjustly enriched.
3. [Draft Resident Protections Ordinance \(CPC-2024-388-CA\)](#). (11 pages). This proposal ignores the need for existing neighborhoods and residents to have long absent municipal services restored to acceptable levels, and focuses instead on granting to those migrating into entitlement housing unprecedented protections, which will displace small Mom and Pop investment in the rental housing market, leaving it to be dominated and controlled by corporate and global real estate.

These factors should be considered:

1. Los Angeles is full and the population is stagnant (Los Angeles Population Growth Rate By Year).
2. Fertility rates worldwide are in decline (U.S. Demographic Table).
3. Current vacancy rate in Los Angeles confirms over 93,000 unrented units ([The Vacancy Report](#)).
4. Short-term rentals like Airbnb and Vrbo have created a massive market for the renting of apartments and single-family homes as temporary or vacation rentals, putting home ownership even further out of reach for the average person.

These policies come from sources bent on profiting from the destruction of our residential quality of life - and with complete impunity.

GTLNC opposes all three proposals for the following reasons, among others:

1. The City of Los Angeles' aging infrastructure cannot accommodate existing demand, much less the intensified uses created by gratuitous, fictionally based building and population density.
2. [The Southern California Association of Governments \(SCAG\) 6th cycle Regional Housing Needs Assessment](#) (RHNA) projects that Southern California "must plan to accommodate" 1,341,827 new housing units by October 2029, of which the City of Los Angeles must accommodate over 400,000 new housing units. There is no evidence to support any such need, let alone these absurd demands.
3. Los Angeles is fully built out. If the need for housing were so urgent, why not build where land is much cheaper instead of in some of the most expensive zip codes in the world?
4. It's the Land, Stupid: How the Homebuilder Cartel Drives High Housing Prices (by Matt Stoller whose *newsletter covers the politics of monopoly power*).
5. The people doing this to us don't care about our quality of life, it's all about profit.

Residents and voters are the ones being victimized by this. And since our elected representatives repeatedly breach their fiduciary duty to protect us, we need to make our objections known in the strongest possible way that these proposals are completely unacceptable. They permanently and irreparably damage our neighborhoods, and for no legitimate purpose.

Let's use the democratic process to demand that our elected officials and city staff serve our interests first and foremost, and not developers, the construction industry and global real estate investors.

All three of these egregious amendments to the Los Angeles Municipal Code will have a profound impact and degrade our residential neighborhoods still further as we continue to reel from the long term devastation from the diversion of the City of Los Angeles operating funds towards homeless services and away from municipal services for Greater Toluca Lake and all of Los Angeles.

GTLNC opposes all these proposals which destroy our property, our peace of mind and the reason for which we built our lives here.

Attachment 4

Item 11

DRAFT RESOLUTION

To be filed with the Offices of Mayor Karen Bass, Council President and Councilmember for Council District 2 Paul Krekorian, Board of Public Works, Los Angeles Department of Sanitation, Office of Public Accountability

Presented at GTLNC Regular Board Meeting on Tuesday, August 20th, 2024

The Greater Toluca Lake Neighborhood Council opposes the City of Los Angeles proposed Sewer Service Charge rate increase of \$700 million over the next four years. This would double current customer rates beginning with a 22% increase in October 2024. The lack of transparency is shocking.

There has been little to no outreach by the Bureau of Sanitation. Rate payers have not had access to financial information, a meaningful opportunity to review and analyze the proposed rate increase, or the ability to comment and voice their concerns. The bad faith manner in which this de facto “voter referendum” has been conveyed to customers virtually guarantees adoption of this controversial rate increase by this government monopoly utility. Also absent is an independent third party review and analysis, including by the City of Los Angeles’ Office of Public Accountability.

NEW SEWER SERVICE CHARGE RATES PROPOSED



North Outfall Sewer Rehabilitation, 101 Freeway to Cardinal Street



Cochran-Adams Sewer Replacement Project

LA'S CLEAN WATER PROGRAM



The City of Los Angeles is proposing to resume Sewer Service Charge rate increases that were paused in 2020 because of the COVID-19 pandemic. The proposed increase is necessary to protect Angelenos' public health and the environment. You are receiving this notice to inform you of the proposed rates, scheduled informational webinars, and a public hearing where the LA City Council will consider adoption of the new rates.

The Sewer Service Charge you pay on your Los Angeles Department of Water and Power utility bill is the source of funding for LA's wastewater system. The charge is based on a percentage of the amount of metered water that you use. It provides revenues for operating and maintaining LA's 6,700 miles of sewers and four water reclamation plants that treat the sewage discharged into the wastewater system. It also provides for new sewer construction, repairs, and other wastewater infrastructure improvements.

We know that many households are still in need. There is financial assistance available for Angelenos. The City currently offers a discounted Sewer Service Charge rate through LA's EZ-SAVE Program. This assistance will continue for eligible households. See inside for more information.

PROTECTING PUBLIC HEALTH AND THE ENVIRONMENT

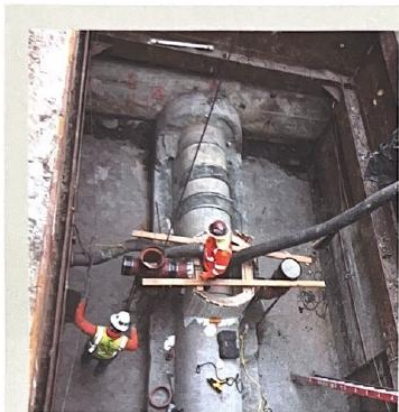
Your Sewer Service Charge goes toward protecting Angelenos' health and the environment by making upgrades and repairs to LA's aging wastewater system and its reclamation plants. This is the system that safely removes wastewater from your homes, businesses, schools and community facilities, and then processes it at LA's four reclamation plants. Many pipelines need to be repaired or replaced and improvement projects for the sewers and treatment facilities are underway to continue making sure we protect public health and that we are safeguarding our environment, including our waterways, beaches and ocean.

YOUR SEWER SERVICE CHARGE RATES PAY FOR:

<p>24/7 operations - wastewater - sewers and treatment</p>	<p>Routine maintenance and emergency repairs</p>	<p>Repairs and construction of new sewers and other infrastructure improvements</p>	<p>Environmental monitoring, public health protection</p>	<p>Increasing resiliency of facilities, building backup systems for greater safety</p>	<p>Community education and construction project notification</p>
--	--	---	---	--	--



North Outfall Sewer Rehabilitation, 101 Freeway to Cardinal Street



North Outfall Sewer Rehabilitation

PROPOSED SEWER SERVICE CHARGE RATES

Rates have been developed to bring in sufficient revenues to operate and maintain a safe and reliable sewer system. The proposed rates equitably allocate costs to our residential, commercial, industrial and other customer categories – and are proportional to your use of the City’s wastewater system facilities.

Proposed City of LA Sewer Service Charge Rates

	CURRENT	FALL 2024	MAR 2025	JULY 2025	JAN 2026	JULY 2026	JULY 2027	JULY 2028
Rates below apply to City of Los Angeles Sewer Service Charge customers								
\$/HCF*	\$5.80	\$7.08	\$7.56	\$8.48	\$9.28	\$10.13	\$11.01	\$11.96
Rates below apply to City of Los Angeles Low-Income Sewer Service Charge customers								
\$/HCF*	\$4.00	\$4.89	\$5.22	\$5.85	\$6.41	\$6.99	\$7.60	\$8.25
Rates below apply to industrial customers monitored by the Industrial Waste Management Division								
Low-Strength SSC - \$/HCF*	\$4.02	\$4.15	\$4.38	\$5.01	\$5.41	\$6.00	\$6.50	\$7.12
Biochemical Oxygen Demand \$/lb. of BOD	\$0.60	\$0.73	\$0.80	\$0.86	\$0.96	\$1.02	\$1.10	\$1.17
Total Suspended Solids \$/lb. of TSS	\$0.61	\$0.64	\$0.70	\$0.74	\$0.83	\$0.86	\$0.92	\$0.97
Rates below apply to customers that receive wastewater collection services from the City of Los Angeles and treatment services from the Los Angeles County Sanitation Districts								
Sewage Conveyance Charge \$/HCF*	\$0.87	\$1.89	\$1.95	\$2.25	\$2.38	\$2.51	\$2.63	\$2.91
Sewage Conveyance Charge Low-Income \$/HCF*	\$0.60	\$1.30	\$1.35	\$1.55	\$1.64	\$1.73	\$1.82	\$2.01

UPCOMING PROJECTS

In the next five years, the City will invest in hundreds of projects citywide, with anticipated costs exceeding \$3 billion.

Projects will be launched to build, enhance, or replace critical pumping plants that prevent sewage overflows.

Modernizing the North Outfall Sewer – the backbone of LA’s 6,700-mile sewer system – will be completed after two decades of construction projects, ensuring its service for generations to come.

Water reclamation plants will prepare for the resiliency needs for the future of Los Angeles.

- \$/HCF = Cost (rate) per hundred cubic feet of water used. 1 HCF is equal to 748 gallons.
- Low-Strength = wastewater that contains BOD or TSS concentrations less than the designated BOD and TSS values.
- Biochemical Oxygen Demand (BOD) = the amount of oxygen needed to degrade the organic matter in the wastewater.
- Total Suspended Solids (TSS) = total amount of suspended or “floating” particles in the wastewater flow.
- Sewage Conveyance Charge = this is a charge for the use of LA sewers only and excludes LA’s wastewater treatment systems.
- Note: Future bills will no longer include surcharges.



BILL CALCULATOR: Your future sewer bills depend on the adopted rates as well as how much water you use. You can estimate your future sewer bills based on the amount of Sewer Service Charge HCF (Hundred Cubic Feet) shown on your last LADWP utility bill using our bill calculator at www.lacitysan.org/rates.



P.O. Box 151539
Los Angeles, CA 90015

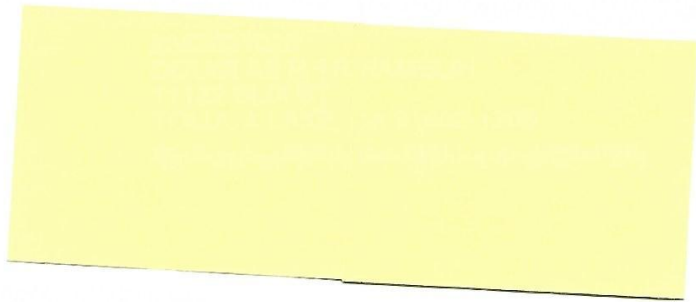


This notice is available in multiple languages at www.lacitysant.org/rates

Este aviso está disponible en varios idiomas en www.lacitysant.org/rates



PRESORTED
FIRST CLASS
U.S. POSTAGE
PAID
LOS ANGELES, CA
PERMIT NO. 3389



NOTICE OF PUBLIC HEARING

PROPOSED SEWER SERVICE CHARGE RATES FOR LASAN CUSTOMERS

August 27, 2024
10:00 a.m.

Los Angeles City Hall
John Ferraro Council Chamber,
Room 340
200 North Spring Street,
Los Angeles, 90012



Los Angeles–Glendale Water Reclamation Plant

Attachment 5

Item 12

DRAFT RESOLUTION

To be filed as to [Council File 24-0867](#) as a Community Impact Statement

Presented at GTLNC Regular Board Meeting on Tuesday, August 20th, 2024

The Greater Toluca Lake Neighborhood Council opposes [Council File 24-0867](#) (Rodriguez) Neighborhood Council Bylaws / Youth Participation / Diversity Increase / Leadership Growth which interferes with neighborhood council bylaws, seeks increased control over neighborhood councils, and is an unwarranted intrusion. This motion contradicts the purpose of the Neighborhood Council System, and undermines the reason it was created in the first place.

[Council File 24-0867](#) promotes the appearance of inclusiveness and equal access (which neighborhood councils fully already are), and cloaks its author's true aim which is to gut neighborhood councils of seasoned board members with their experience and institutional knowledge sufficient to challenge her.

The [Los Angeles City Charter](#) (Article IX, Sec. 906) guarantees Neighborhood Councils' ability to determine their own leaders.

Also, Article III, Section 2(b)(ii) of the [Plan for a Citywide System of Neighborhood Councils](#) (the Plan), states:

“Terms of members of the Governing Body shall be for two or four years, to be decided upon by individual Neighborhood Councils. Neighborhood Councils may limit the total number of terms that a member of the Governing Body may serve, if the term limitations are set forth in the Neighborhood Council's bylaws after the date this provision was amended.”

This provision establishes that individual Neighborhood Councils have the authority to determine their own term lengths, and implementation of term limits is at the discretion of each Neighborhood Council, to be set forth in their respective bylaws.

The current motion contradicts this established legal framework, which emphasizes local control and flexibility.

Any attempt to impose universal term limits on the entire Neighborhood Council system should be rejected.

Attachment 6, Item 13.1

Monthly Expenditure Report



Reporting Month: June 2024

Budget Fiscal Year: 2023-2024

**NC Name: Greater Toluca Lake
Neighborhood Council**

Monthly Cash Reconciliation					
Beginning Balance	Total Spent	Remaining Balance	Outstanding	Commitments	Net Available
\$27794.13	\$3785.19	\$24008.94	\$5000.00	\$0.00	\$19008.94

Monthly Cash Flow Analysis					
Budget Category	Adopted Budget	Total Spent this Month	Unspent Budget Balance	Outstanding	Net Available
Office	\$29700.00	\$2594.28	\$17959.65	\$0.00	\$17959.65
Outreach		\$1190.91		\$0.00	
Elections		\$0.00		\$0.00	
Community Improvement Project	\$0.00	\$0.00	\$0.00	\$0.00	\$0.00
Neighborhood Purpose Grants	\$2300.00	\$0.00	\$2300.00	\$5000.00	\$-2700.00
Funding Requests Under Review: \$0.00		Encumbrances: \$0.00		Previous Expenditures: \$7955.16	

Expenditures						
#	Vendor	Date	Description	Budget Category	Sub-category	Total
1	GOOGLE GSUITE_GTLNC.O	06/01/2024	Monthly billing (May 2024) for GTLNC Google Workspace Business Starter: Usage of 21 seats	General Operations Expenditure	Office	\$151.20
2	SMK SURVEYMONKEY.COM	06/07/2024	Annual Survey Monkey subscription to create surveys to assess stakeholder interests and concerns	General Operations Expenditure	Outreach	\$468.00
3	NOHO PRINT & COPY INC	06/12/2024	Design and printing of two (2) Premium 32" X 82" 2-color vertical re-tractable GTLNC banners for use at community events and conferences.	General Operations Expenditure	Outreach	\$485.10
4	NOHO PRINT & COPY INC	06/12/2024	Agenda packets for GTLNC Committees: Planning and Land Use (June 10th, 2024), Outreach (June 11th, 2024) and Governmental Affairs (June 12th, 2024).	General Operations Expenditure	Office	\$44.10
5	AMAZON MAR 111-008075	06/13/2024	16.5" large digital wall timer clock with countdown timer for use at GTLNC meetings.	General Operations Expenditure	Office	\$39.41
6	RANDYS DONUTS NOHO	06/18/2024	Approve up to \$250 for snacks for GTLNC Regular Board Meetings, to include (but not limited to) incidentals such as beverages, napkins, plates, plastic cutlery, trash bags, etc.	General Operations Expenditure	Outreach	\$16.00

AGENDA: GTLNC Regular Board Meeting

Tuesday, August 20th, 2024

7	SHARKYS WOODFIRED MEXI	06/18/2024	Approve up to \$250 for snacks for GTLNC Regular Board Meetings, to include (but not limited to) incidentals such as beverages, napkins, plates, plastic cutlery, trash bags, etc.	General Operations Expenditure	Outreach	\$221.81
8	NOHO PRINT & COPY INC	06/19/2024	Copies of agenda packets for June 18, 2024 GTLNC Regular Board Meeting	General Operations Expenditure	Office	\$40.79
9	SP ANDERSON TROPHY	06/20/2024	Approve request for cost adjustment for fifteen (15) sets of GTLNC Board Member business cards and name badges with lanyards, for a total of up to \$1,000.	General Operations Expenditure	Office	\$261.98
10	Los Angeles Unified School District	05/21/2024	Motion Approve payment to LAUSD of \$980 to rent Toluca Lake Elementary School Auditorium and Classrooms for GTLNC meetings	General Operations Expenditure	Office	\$980.00
11	APPLEONE EMPLOYMENT SERVICES	05/31/2024	Motion: Budget up to \$150 per month for 12 months for GTLNC minute-taker at the regular board meetings	General Operations Expenditure	Office	\$76.80
12	TYS Creative	05/23/2024	Motion: Approval for up to \$1,000.00 for Website hosting and administration services for GTLNC.org and VoteTolucaLake.org to TYS Creative for period of March 2024 to June 2024.	General Operations Expenditure	Office	\$1000.00
Subtotal:						\$3785.19

Outstanding Expenditures						
#	Vendor	Date	Description	Budget Category	Sub-category	Total
1	EnrichLA	05/09/2024	Motion: Approve Neighborhood Purpose Grant for Enrich LA project at Toluca Lake Elementary for \$5,000	Neighborhood Purpose Grants		\$5000.00
Subtotal: Outstanding						\$5000.00

Attachment 7, Item 13.3



CERTIFICATE OF LIABILITY INSURANCE

DATE (MM/DD/YYYY)
06/12/2024

THIS CERTIFICATE IS ISSUED AS A MATTER OF INFORMATION ONLY AND CONFERS NO RIGHTS UPON THE CERTIFICATE HOLDER. THIS CERTIFICATE DOES NOT AFFIRMATIVELY OR NEGATIVELY AMEND, EXTEND OR ALTER THE COVERAGE AFFORDED BY THE POLICIES BELOW. THIS CERTIFICATE OF INSURANCE DOES NOT CONSTITUTE A CONTRACT BETWEEN THE ISSUING INSURER(S), AUTHORIZED REPRESENTATIVE OR PRODUCER, AND THE CERTIFICATE HOLDER.

IMPORTANT: If the certificate holder is an ADDITIONAL INSURED, the policy(ies) must have ADDITIONAL INSURED provisions or be endorsed. If SUBROGATION IS WAIVED, subject to the terms and conditions of the policy, certain policies may require an endorsement. A statement on this certificate does not confer rights to the certificate holder in lieu of such endorsement(s).

PRODUCER East Main Street Insurance Services, Inc. Will Maddux PO Box 1298 Grass Valley CA 95945		CONTACT NAME: Will Maddux PHONE (A/C No. Ext): (530) 477-6521 FAX (A/C No.): E-MAIL ADDRESS: info@theeventhelper.com	
		INSURER(S) AFFORDING COVERAGE INSURER A: Evanston Insurance Company	NAIC # 35378
INSURED Christine R Geltz 1030 Bradbourne Ave #29 Duarte CA 91010		INSURER B: INSURER C: INSURER D: INSURER E: INSURER F:	

COVERAGES **CERTIFICATE NUMBER:** **REVISION NUMBER:**

THIS IS TO CERTIFY THAT THE POLICIES OF INSURANCE LISTED BELOW HAVE BEEN ISSUED TO THE INSURED NAMED ABOVE FOR THE POLICY PERIOD INDICATED. NOTWITHSTANDING ANY REQUIREMENT, TERM OR CONDITION OF ANY CONTRACT OR OTHER DOCUMENT WITH RESPECT TO WHICH THIS CERTIFICATE MAY BE ISSUED OR MAY PERTAIN, THE INSURANCE AFFORDED BY THE POLICIES DESCRIBED HEREIN IS SUBJECT TO ALL THE TERMS, EXCLUSIONS AND CONDITIONS OF SUCH POLICIES. LIMITS SHOWN MAY HAVE BEEN REDUCED BY PAID CLAIMS.

INSR LTR	TYPE OF INSURANCE	ADDL INSD	SUBR WVD	POLICY NUMBER	POLICY EFF (MM/DD/YYYY)	POLICY EXP (MM/DD/YYYY)	LIMITS
A	<input checked="" type="checkbox"/> COMMERCIAL GENERAL LIABILITY <input type="checkbox"/> CLAIMS-MADE <input checked="" type="checkbox"/> OCCUR <input checked="" type="checkbox"/> Host Liquor Liability <input type="checkbox"/> Retail Liquor Liability GEN'L AGGREGATE LIMIT APPLIES PER: <input checked="" type="checkbox"/> POLICY <input type="checkbox"/> PRO-JECT <input type="checkbox"/> LOC OTHER:	Y	N	3DS5475-M3858149	06/29/2024 12:01 AM	06/30/2024 12:01 AM	EACH OCCURRENCE \$ 1,000,000 DAMAGE TO RENTED PREMISES (other than fire) \$ 1,000,000 MED EXP (Any one person) \$ 5,000 PERSONAL & ADV INJURY \$ 1,000,000 GENERAL AGGREGATE \$ 2,000,000 PRODUCTS - COMPI/OP AGG \$ 2,000,000 Deductible \$ 1,000
	AUTOMOBILE LIABILITY <input type="checkbox"/> ANY AUTO <input type="checkbox"/> OWNED AUTOS ONLY <input type="checkbox"/> SCHEDULED AUTOS <input type="checkbox"/> HIRED AUTOS ONLY <input type="checkbox"/> NON-OWNED AUTOS ONLY						COMBINED SINGLE LIMIT (Ea accident) \$ BODILY INJURY (Per person) \$ BODILY INJURY (Per accident) \$ PROPERTY DAMAGE (Per accident) \$ \$
	<input type="checkbox"/> UMBRELLA LIAB <input type="checkbox"/> OCCUR <input type="checkbox"/> EXCESS LIAB <input type="checkbox"/> CLAIMS-MADE DED RETENTION \$						EACH OCCURRENCE \$ AGGREGATE \$ \$
	WORKERS COMPENSATION AND EMPLOYERS' LIABILITY ANY PROPRIETOR/PARTNER/EXECUTIVE OFFICER/MEMBER EXCLUDED? (Mandatory in NH) If yes, describe under DESCRIPTION OF OPERATIONS below	Y/N	N/A				PER STATUTE <input type="checkbox"/> OTH-ER <input type="checkbox"/> E.L. EACH ACCIDENT \$ E.L. DISEASE - EA EMPLOYEE \$ E.L. DISEASE - POLICY LIMIT \$

DESCRIPTION OF OPERATIONS / LOCATIONS / VEHICLES (ACORD 101, Additional Remarks Schedule, may be attached if more space is required)
 Certificate holder listed below is named as additional insured per attached MEGL 2217 01 19. Attendance: 5, Event Type: Art Installation - With Construction/Setup.

CERTIFICATE HOLDER City of Los Angeles 4305 Vineland Ave Los Angeles CA 91602	CANCELLATION SHOULD ANY OF THE ABOVE DESCRIBED POLICIES BE CANCELLED BEFORE THE EXPIRATION DATE THEREOF, NOTICE WILL BE DELIVERED IN ACCORDANCE WITH THE POLICY PROVISIONS. AUTHORIZED REPRESENTATIVE
---	--



COMMERCIAL GENERAL LIABILITY
POLICY NUMBER: 3DS5475-M3858149

EVANSTON INSURANCE COMPANY

THIS ENDORSEMENT CHANGES THE POLICY. PLEASE READ IT CAREFULLY.

ADDITIONAL INSURED – DESIGNATED PERSON OR ORGANIZATION

This endorsement modifies insurance provided under the following:
COMMERCIAL GENERAL LIABILITY COVERAGE FORM

SCHEDULE

<p>Name Of Additional Insured Person(s) Or Organization(s):</p> <p>City of Los Angeles 4305 Vineland Ave Los Angeles, CA 91602</p>

A. Section II – Who Is An Insured is amended to include as an additional insured the person(s) or organization(s) shown in the Schedule of this endorsement, but only with respect to liability for "bodily injury", "property damage" or "personal and advertising injury" caused, in whole or in part, by the acts or omissions of any insured listed under Paragraph 1. or 2. of Section II – Who Is An Insured:

1. In the performance of your ongoing operations; or
2. In connection with your premises owned by or rented to you.

However:

1. The insurance afforded to such additional insured only applies to the extent permitted by law; and
2. If coverage provided to the additional insured is required by a contract or agreement, the insurance afforded to such additional insured will not be broader than that which you are required by the contract or agreement to provide for such additional insured.

MEGL 2217 01 19

Includes copyrighted material of Insurance Services Office, Inc., with its permission.

Page 1 of 2

B. With respect to the insurance afforded to these additional insureds, the following is added to Section III – Limits Of Insurance:

If coverage provided to the additional insured is required by a contract or agreement, the most we will pay on behalf of the additional insured is the amount of insurance:

1. Required by the contract or agreement; or
2. Available under the applicable Limits of Insurance shown in the Declarations; whichever is less.

This endorsement shall not increase the applicable Limits of Insurance shown in the Declarations.

All other terms and conditions remain unchanged.

Tuesday, August 20th, 2024

Attachment 8, Item 13.4



CERTIFICATE OF LIABILITY INSURANCE

DATE (MM/DD/YYYY)
06/12/2024

THIS CERTIFICATE IS ISSUED AS A MATTER OF INFORMATION ONLY AND CONFERS NO RIGHTS UPON THE CERTIFICATE HOLDER. THIS CERTIFICATE DOES NOT AFFIRMATIVELY OR NEGATIVELY AMEND, EXTEND OR ALTER THE COVERAGE AFFORDED BY THE POLICIES BELOW. THIS CERTIFICATE OF INSURANCE DOES NOT CONSTITUTE A CONTRACT BETWEEN THE ISSUING INSURER(S), AUTHORIZED REPRESENTATIVE OR PRODUCER, AND THE CERTIFICATE HOLDER.

IMPORTANT: If the certificate holder is an ADDITIONAL INSURED, the policy(ies) must have ADDITIONAL INSURED provisions or be endorsed. If SUBROGATION IS WAIVED, subject to the terms and conditions of the policy, certain policies may require an endorsement. A statement on this certificate does not confer rights to the certificate holder in lieu of such endorsement(s).

PRODUCER East Main Street Insurance Services, Inc. Will Maddux PO Box 1298 Grass Valley CA 95945	CONTACT NAME: Will Maddux PHONE (A/C. No., Ext.): (530) 477-6521 FAX (A/C. No.): E-MAIL ADDRESS: info@theeventhelper.com																				
	<table border="1"> <tr> <th colspan="2">INSURER(S) AFFORDING COVERAGE</th> <th>NAIC #</th> </tr> <tr> <td>INSURER A:</td> <td>Evanston Insurance Company</td> <td>35378</td> </tr> <tr> <td>INSURER B:</td> <td></td> <td></td> </tr> <tr> <td>INSURER C:</td> <td></td> <td></td> </tr> <tr> <td>INSURER D:</td> <td></td> <td></td> </tr> <tr> <td>INSURER E:</td> <td></td> <td></td> </tr> <tr> <td>INSURER F:</td> <td></td> <td></td> </tr> </table>	INSURER(S) AFFORDING COVERAGE		NAIC #	INSURER A:	Evanston Insurance Company	35378	INSURER B:			INSURER C:			INSURER D:			INSURER E:			INSURER F:	
INSURER(S) AFFORDING COVERAGE		NAIC #																			
INSURER A:	Evanston Insurance Company	35378																			
INSURER B:																					
INSURER C:																					
INSURER D:																					
INSURER E:																					
INSURER F:																					
INSURED Katie Chrisanthi Sunderalingam 10742 1/2 Camarillo St Los Angeles CA 91602																					

COVERAGES **CERTIFICATE NUMBER:** **REVISION NUMBER:**

THIS IS TO CERTIFY THAT THE POLICIES OF INSURANCE LISTED BELOW HAVE BEEN ISSUED TO THE INSURED NAMED ABOVE FOR THE POLICY PERIOD INDICATED. NOTWITHSTANDING ANY REQUIREMENT, TERM OR CONDITION OF ANY CONTRACT OR OTHER DOCUMENT WITH RESPECT TO WHICH THIS CERTIFICATE MAY BE ISSUED OR MAY PERTAIN, THE INSURANCE AFFORDED BY THE POLICIES DESCRIBED HEREIN IS SUBJECT TO ALL THE TERMS, EXCLUSIONS AND CONDITIONS OF SUCH POLICIES. LIMITS SHOWN MAY HAVE BEEN REDUCED BY PAID CLAIMS.

INSR LTR	TYPE OF INSURANCE	ADDL INSD	SUBR WVD	POLICY NUMBER	POLICY EFF (MM/DD/YYYY)	POLICY EXP (MM/DD/YYYY)	LIMITS
A	<input checked="" type="checkbox"/> COMMERCIAL GENERAL LIABILITY <input type="checkbox"/> CLAIMS-MADE <input checked="" type="checkbox"/> OCCUR <input checked="" type="checkbox"/> Host Liquor Liability <input type="checkbox"/> Retail Liquor Liability GEN'L AGGREGATE LIMIT APPLIES PER: <input checked="" type="checkbox"/> POLICY <input type="checkbox"/> PRO-JECT <input type="checkbox"/> LOC OTHER:	Y	N	3DS5475-M3957548	06/29/2024 12:01 AM	06/30/2024 12:01 AM	EACH OCCURRENCE \$ 1,000,000
	DAMAGE TO RENTED PREMISES (other than fire) \$ 1,000,000						
	MED EXP (Any one person) \$ 5,000						
	PERSONAL & ADV INJURY \$ 1,000,000						
	<input checked="" type="checkbox"/> POLICY <input type="checkbox"/> PRO-JECT <input type="checkbox"/> LOC OTHER:						GENERAL AGGREGATE \$ 2,000,000
	<input type="checkbox"/> ANY AUTO <input type="checkbox"/> OWNED AUTOS ONLY <input type="checkbox"/> HIRED AUTOS ONLY <input type="checkbox"/> SCHEDULED AUTOS <input type="checkbox"/> NON-OWNED AUTOS ONLY						PRODUCTS - COM/OP AGG \$ 2,000,000
	<input type="checkbox"/> UMBRELLA LIAB <input type="checkbox"/> OCCUR <input type="checkbox"/> EXCESS LIAB <input type="checkbox"/> CLAIMS-MADE DED RETENTION \$						Deductible \$ 1,000
	WORKERS COMPENSATION AND EMPLOYERS' LIABILITY ANY PROPRIETOR/PARTNER/EXECUTIVE OFFICER/MEMBER EXCLUDED? (Mandatory in NH) If yes, describe under DESCRIPTION OF OPERATIONS below						COMBINED SINGLE LIMIT (Ea accident) \$
							BODILY INJURY (Per person) \$
							BODILY INJURY (Per accident) \$
							PROPERTY DAMAGE (Per accident) \$
							\$
							EACH OCCURRENCE \$
							AGGREGATE \$
							\$
							PER STATUTE OTH-ER
							E.L. EACH ACCIDENT \$
							E.L. DISEASE - EA EMPLOYEE \$
							E.L. DISEASE - POLICY LIMIT \$

DESCRIPTION OF OPERATIONS / LOCATIONS / VEHICLES (ACORD 101, Additional Remarks Schedule, may be attached if more space is required)
 Certificate holder listed below is named as additional insured per attached MEGL 2217 01 19. Attendance: 20, Event Type: Art Installation - With Construction/Setup.

CERTIFICATE HOLDER City of Los Angeles 4305 Vineland Avenue Los Angeles, CA 91602 4305 Vineland Ave Los Angeles CA 91602	CANCELLATION SHOULD ANY OF THE ABOVE DESCRIBED POLICIES BE CANCELLED BEFORE THE EXPIRATION DATE THEREOF, NOTICE WILL BE DELIVERED IN ACCORDANCE WITH THE POLICY PROVISIONS. AUTHORIZED REPRESENTATIVE
--	--

© 1988-2015 ACORD CORPORATION. All rights reserved.



COMMERCIAL GENERAL LIABILITY
POLICY NUMBER: 3DS5475-M3957548

EVANSTON INSURANCE COMPANY

THIS ENDORSEMENT CHANGES THE POLICY. PLEASE READ IT CAREFULLY.

ADDITIONAL INSURED – DESIGNATED PERSON OR ORGANIZATION

This endorsement modifies insurance provided under the following:
COMMERCIAL GENERAL LIABILITY COVERAGE FORM

SCHEDULE

Name Of Additional Insured Person(s) Or Organization(s):
City of Los Angeles 4305 Vineland Avenue Los Angeles, CA 91602 4305 Vineland Ave Los Angeles, CA 91602

A. Section II – Who Is An Insured is amended to include as an additional insured the person(s) or organization(s) shown in the Schedule of this endorsement, but only with respect to liability for "bodily injury", "property damage" or "personal and advertising injury" caused, in whole or in part, by the acts or omissions of any insured listed under Paragraph 1. or 2. of Section II – Who Is An Insured:

- 1. In the performance of your ongoing operations; or
- 2. In connection with your premises owned by or rented to you.

However:

- 1. The insurance afforded to such additional insured only applies to the extent permitted by law; and
- 2. If coverage provided to the additional insured is required by a contract or agreement, the insurance afforded to such additional insured will not be broader than that which you are required by the contract or agreement to provide for such additional insured.

MEGL 2217 01 19

Includes copyrighted material of Insurance Services Office, Inc., with its permission.

Page 1 of 2

B. With respect to the insurance afforded to these additional insureds, the following is added to Section III – Limits Of Insurance:

If coverage provided to the additional insured is required by a contract or agreement, the most we will pay on behalf of the additional insured is the amount of insurance:

- 1. Required by the contract or agreement; or
- 2. Available under the applicable Limits of Insurance shown in the Declarations; whichever is less.

This endorsement shall not increase the applicable Limits of Insurance shown in the Declarations.

All other terms and conditions remain unchanged.

Attachment 8, Item 13.4 (continued)



10742 1/2 CAMARILLO STREET
 NORTH HOLLYWOOD
 CA 91602
 WWW.KATIESWORK.COM
 323 397 2200

INVOICE 0042024 TO:
 Greater Toluca Lake Neighborhood Council

JOB NAME: Signal cabinet painting Insurance plan DATE: 12th June 2024

SERVICES	AMOUNT
Insurance for Design and painting of 2 x signal cabinets	\$268.00
TOTAL	\$268.00

THANK YOU

PLEASE MAKE CHECKS PAYABLE to KATIE C SUNDERALINGAM at ABOVE ADDRESS

Electronic transfer details: ZELLE - 323 397 2200 Venmo: @katiecsunderalingam

50% DEPOSIT REQUIRED before painting projects commence

FINAL PAYMENT IS DUE WITHIN 30 DAYS OF THE DATE ON THIS INVOICE