

EXHIBIT D



LOS ANGELES EVENT CENTER NFL ANALYSIS

July 22, 2011

Ticket Sales Analysis

NFL Markets



Ticket Sales Analysis



Attendance Per Game - NFL Markets
Sorted by 5-Year Average Tickets Sold Per Game

2009 Rank	Team	Stadium Year Built	Stadium Seating Capacity	Tickets Sold Per Regular Season Game					5-Year	
				2009	2008	2007	2006	2005	Average	Rank
1	Washington Redskins	1997	85,513	85,213	88,756	88,934	88,619	88,452	87,995	1
2	New York Giants	1976	79,338	78,677	78,576	78,674	78,616	78,566	78,622	2
3	New York Jets	1976	79,336	73,832	76,703	77,095	77,320	77,480	76,486	3
4	Denver Broncos	2001	73,325	73,804	73,833	74,748	74,569	74,459	74,282	4
5	Buffalo Bills	1998	72,732	66,041	67,735	69,632	66,212	70,320	67,988	14
6	Kansas City Chiefs	1972	72,405	60,355	66,701	77,818	78,021	78,135	72,206	6
7	Miami Dolphins	1987	71,747	67,543	65,490	72,120	73,247	71,907	70,061	9
8	Green Bay Packers	2003	71,324	70,708	70,683	70,802	70,710	70,300	70,641	8
9	Baltimore Ravens	1998	70,315	69,488	69,724	69,617	69,713	69,278	69,564	11
10	Atlanta Falcons	1992	70,135	66,375	62,621	66,824	68,949	68,814	66,716	17
11	Carolina Panthers	1996	70,049	72,146	72,018	72,381	72,399	72,254	72,240	5
12	New England Patriots	2002	69,281	70,185	70,713	72,398	72,333	70,964	71,319	7
13	New Orleans Saints	1975	68,216	66,487	68,344	66,284	66,048	49,936	63,420	23
14	Philadelphia Eagles	2003	67,607	67,498	67,625	67,660	67,911	66,399	67,419	15
15	Cleveland Browns	1999	67,481	64,594	71,060	71,344	70,478	70,614	69,618	10
16	Houston Texans	2002	67,381	68,714	68,612	69,068	68,484	68,460	68,668	12
17	Tennessee Titans	1999	66,963	66,806	67,164	67,093	66,991	66,715	66,954	16
18	Seattle Seahawks	2002	66,004	65,711	66,377	66,707	66,505	64,996	66,059	18
19	San Diego Chargers	1967	65,968	67,494	68,130	68,358	68,637	68,492	68,222	13
20	Pittsburgh Steelers	2001	65,321	64,700	64,654	64,248	64,269	63,730	64,320	20
21	Dallas Cowboys	2009	65,255	78,719	62,126	62,560	62,507	62,171	65,616	19
22	Cincinnati Bengals	2000	64,695	61,975	63,063	64,260	64,519	64,344	63,632	22
23	Tampa Bay Buccaneers	1998	64,602	54,633	63,243	61,494	63,884	63,418	61,334	25
24	Jacksonville Jaguars	1995	64,463	45,883	60,431	60,849	60,870	59,726	57,552	30
25	Arizona Cardinals	2006	63,111	61,949	62,510	63,034	62,063	48,641	59,639	28
26	Oakland Raiders	1995	62,384	42,270	56,172	56,496	55,694	50,172	52,160	32
27	Indianapolis Colts	2008	62,224	64,764	64,453	55,582	55,415	55,331	59,109	29
28	St. Louis Rams	1995	62,067	53,389	58,280	62,587	63,626	63,840	60,345	27
29	Detroit Lions	2002	61,963	47,774	51,891	60,538	60,889	61,576	56,533	31
30	Minnesota Vikings	1982	61,765	62,446	61,567	62,006	62,018	62,248	62,057	24
31	San Francisco 49ers	1960	60,252	60,708	62,180	66,278	65,184	64,008	63,672	21
32	Chicago Bears	2003	59,414	60,511	60,563	60,663	60,910	60,813	60,692	26
Average			67,895	65,043	66,625	67,755	67,738	66,455	66,723	--
Median			67,172	66,208	66,539	66,958	66,748	66,557	66,835	--

Note: Capacities based on 2009 NFL ticket manifest
Source: NFL

**PRIVILEGED AND
CONFIDENTIAL DRAFT**
For Discussion Purposes Only



Ticket Sales Analysis



5-Year Tickets Sold per Game by % of Capacity - NFL Markets

2009 Rank	Team	Stadium Year Built	Stadium Seating Capacity	Tickets Sold as Percentage of Capacity					5-Year		
				2009	2008	2007	2006	2005	Average	Rank	
1	Dallas Cowboys ⁽¹⁾	2009	65,255	120.6%	100.0%	100.7%	100.6%	100.1%	104.4%	1	
2	Indianapolis Colts ⁽²⁾	2008	62,224	104.1%	103.6%	100.1%	99.8%	99.6%	101.4%	8	
3	Carolina Panthers	1996	70,049	103.0%	102.8%	103.3%	103.4%	103.1%	103.1%	3	
4	San Diego Chargers	1967	65,968	102.3%	103.3%	103.6%	104.0%	103.8%	103.4%	2	
5	Houston Texans	2002	67,381	102.0%	101.8%	102.5%	101.6%	101.6%	101.9%	7	
6	Chicago Bears	2003	59,414	101.8%	101.9%	102.1%	102.5%	102.4%	102.2%	6	
7	New England Patriots	2002	69,281	101.3%	102.1%	104.5%	104.4%	102.4%	102.9%	4	
8	Minnesota Vikings	1982	61,765	101.1%	99.7%	100.4%	100.4%	100.8%	100.5%	12	
9	San Francisco 49ers ⁽³⁾	1960	60,252	100.8%	103.2%	101.2%	99.5%	97.7%	100.5%	11	
10	Denver Broncos	2001	73,325	100.7%	100.7%	101.9%	101.7%	101.5%	101.3%	10	
11	Philadelphia Eagles	2003	67,607	99.8%	100.0%	100.1%	100.4%	98.2%	99.7%	16	
12	Tennessee Titans	1999	66,963	99.8%	100.3%	100.2%	100.0%	99.6%	100.0%	14	
13	Washington Redskins	1997	85,513	99.6%	103.8%	104.0%	103.6%	103.4%	102.9%	5	
14	Seattle Seahawks	2002	66,004	99.6%	100.6%	101.1%	100.8%	98.5%	100.1%	13	
15	New York Giants	1976	79,338	99.2%	99.0%	99.2%	99.1%	99.0%	99.1%	17	
16	Green Bay Packers	2003	71,324	99.1%	99.1%	99.3%	99.1%	98.6%	99.0%	18	
17	Pittsburgh Steelers	2001	65,321	99.0%	99.0%	98.4%	98.4%	97.6%	98.5%	21	
18	Baltimore Ravens	1998	70,315	98.8%	99.2%	99.0%	99.1%	98.5%	98.9%	19	
19	Arizona Cardinals	2006	63,111	98.2%	99.0%	99.9%	98.3%	n/a	98.9%	20	
20	New Orleans Saints	1975	68,216	97.5%	100.2%	97.2%	96.8%	n/a	97.9%	23	
21	Cincinnati Bengals	2000	64,695	95.8%	97.5%	99.3%	99.7%	99.5%	98.4%	22	
22	Cleveland Browns ⁽⁴⁾	1999	67,481	95.7%	105.3%	102.8%	101.5%	101.7%	101.4%	9	
23	Atlanta Falcons	1992	70,135	94.6%	89.3%	95.3%	98.3%	98.1%	95.1%	27	
24	Miami Dolphins	1987	71,747	94.1%	91.3%	100.5%	102.1%	100.2%	97.7%	24	
25	New York Jets	1976	79,336	93.1%	96.7%	97.2%	97.5%	97.7%	96.4%	26	
26	Buffalo Bills	1998	72,732	90.8%	93.1%	95.7%	91.0%	96.7%	93.5%	29	
27	St. Louis Rams	1995	62,067	86.0%	93.9%	100.8%	102.5%	102.9%	97.2%	25	
28	Tampa Bay Buccaneers	1998	64,602	84.6%	97.9%	95.2%	98.9%	98.2%	94.9%	28	
29	Kansas City Chiefs	1972	72,405	83.4%	92.1%	107.5%	107.8%	107.9%	99.7%	15	
30	Detroit Lions	2002	61,963	77.1%	83.7%	97.7%	98.3%	99.4%	91.2%	30	
31	Jacksonville Jaguars	1995	64,463	71.2%	93.7%	94.4%	94.4%	92.7%	89.3%	31	
32	Oakland Raiders	1995	62,384	67.8%	90.0%	90.6%	89.3%	80.4%	83.6%	32	
Average				67,895	95.7%	98.2%	99.9%	99.8%	99.4%	98.6%	--
Median				67,172	99.1%	99.4%	100.1%	99.9%	99.5%	99.4%	--

(1) Occupancy percentages from 2005-08 are based on a capacity of 62,108

(2) Occupancy percentages from 2005-07 are based on a capacity of 55,531

(3) Occupancy percentages from 2005-07 are based on a capacity of 65,500

(4) Occupancy percentages from 2005-07 are based on a capacity of 69,406

Note: Sorted by 2009 percentage of capacity

Note: Capacities based on 2009 NFL Ticket Manifest, unless otherwise noted

Source: NFL

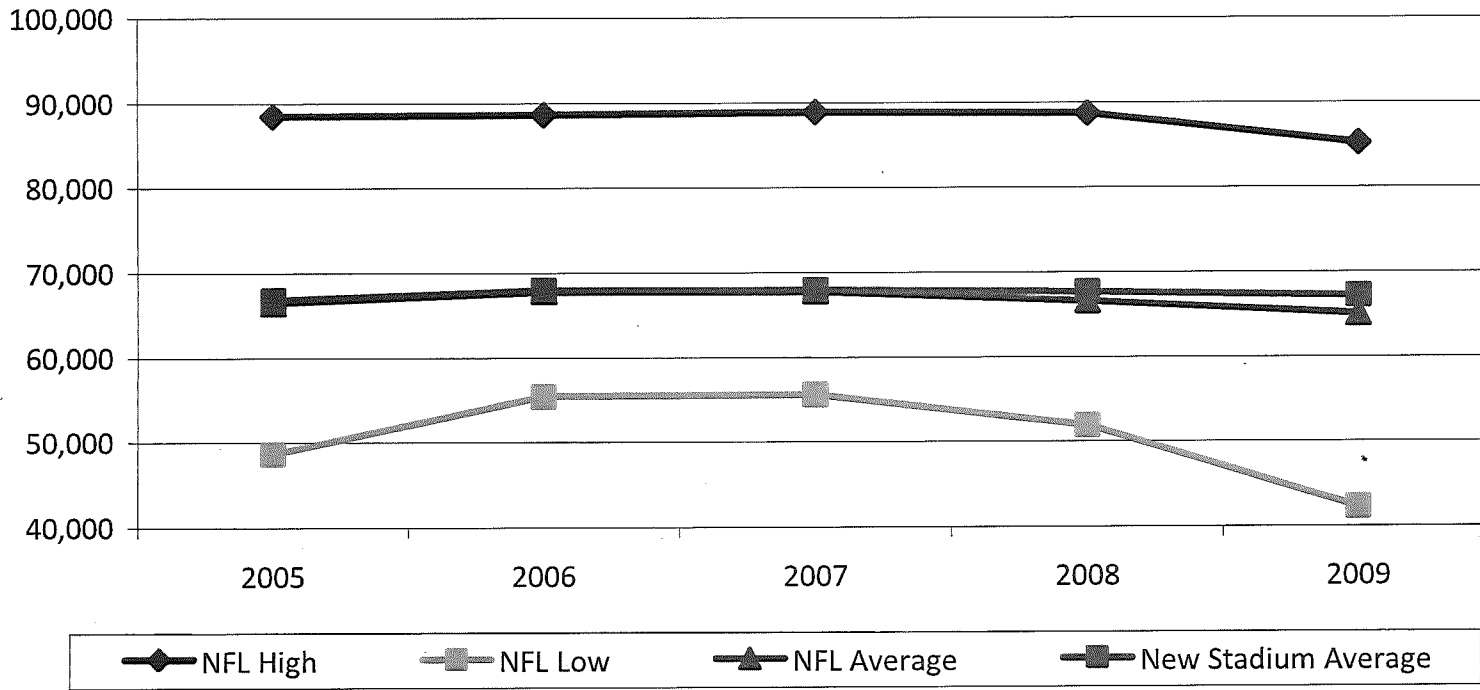
**PRIVILEGED AND
CONFIDENTIAL DRAFT**
For Discussion Purposes Only



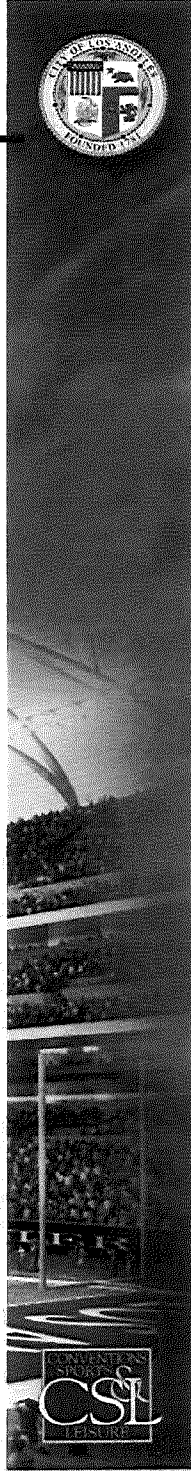
Ticket Sales Analysis



5-year Average Tickets Sold per Game - NFL Markets



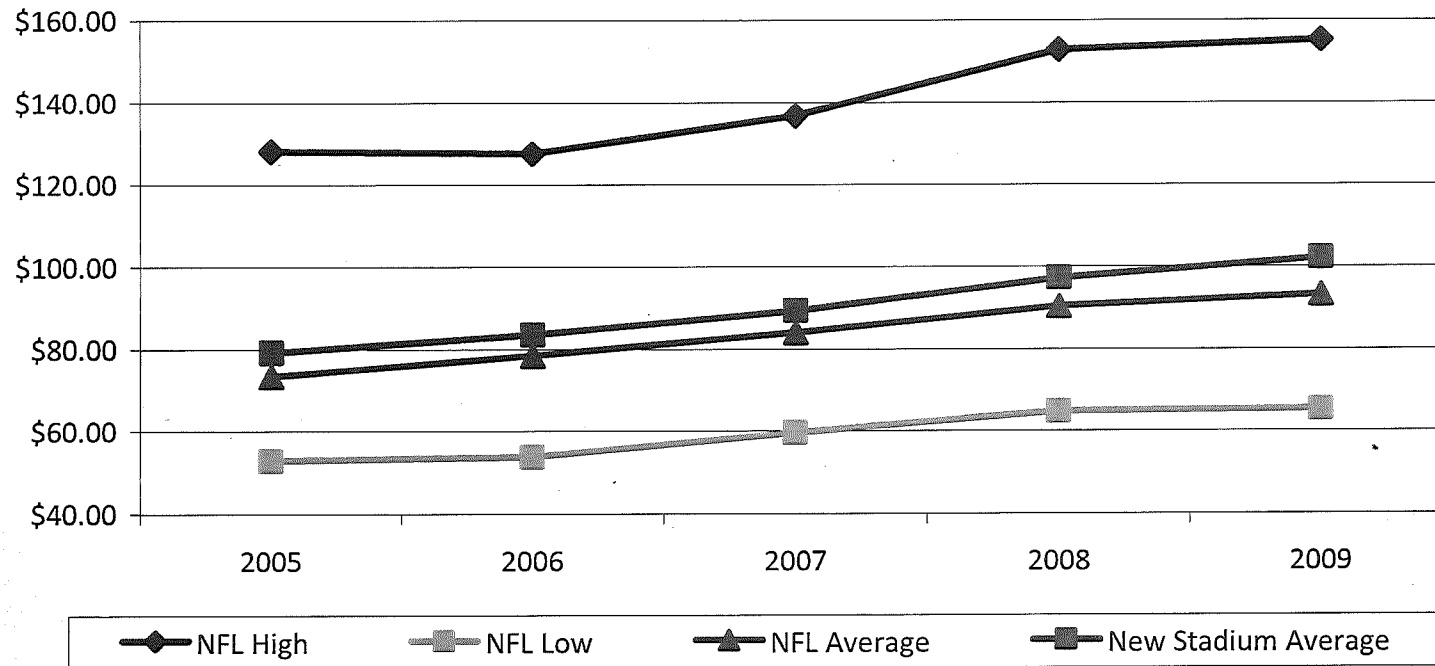
Note: New stadium average includes stadiums built since 1996.
 Source: NFL



Ticket Sales Analysis



5-Year Average Ticket Price (Including Club Premium) - NFL Markets



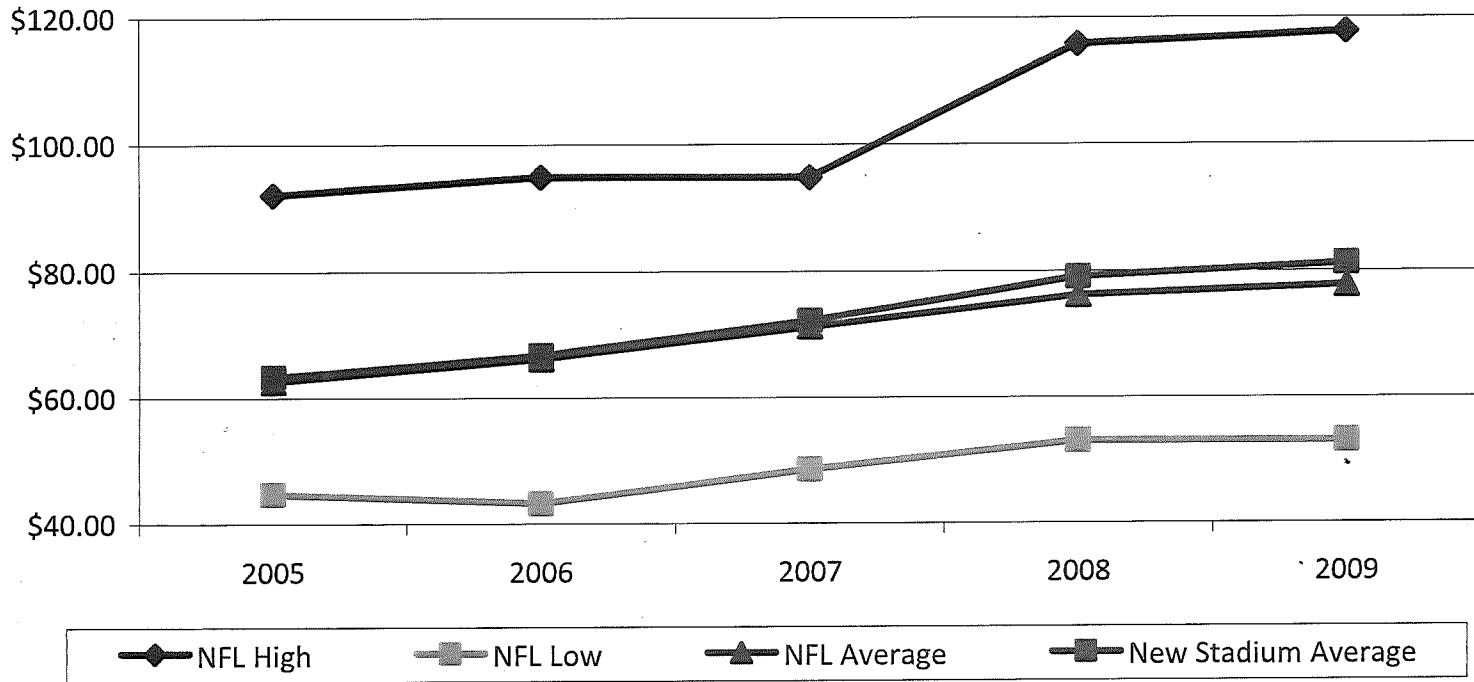
Note: New stadium average includes stadiums built since 1996.

Source: NFL

Ticket Sales Analysis



5-Year Average Ticket Price (Excluding Club Premium) - NFL Markets



Note: New stadium average includes stadiums built since 1996.

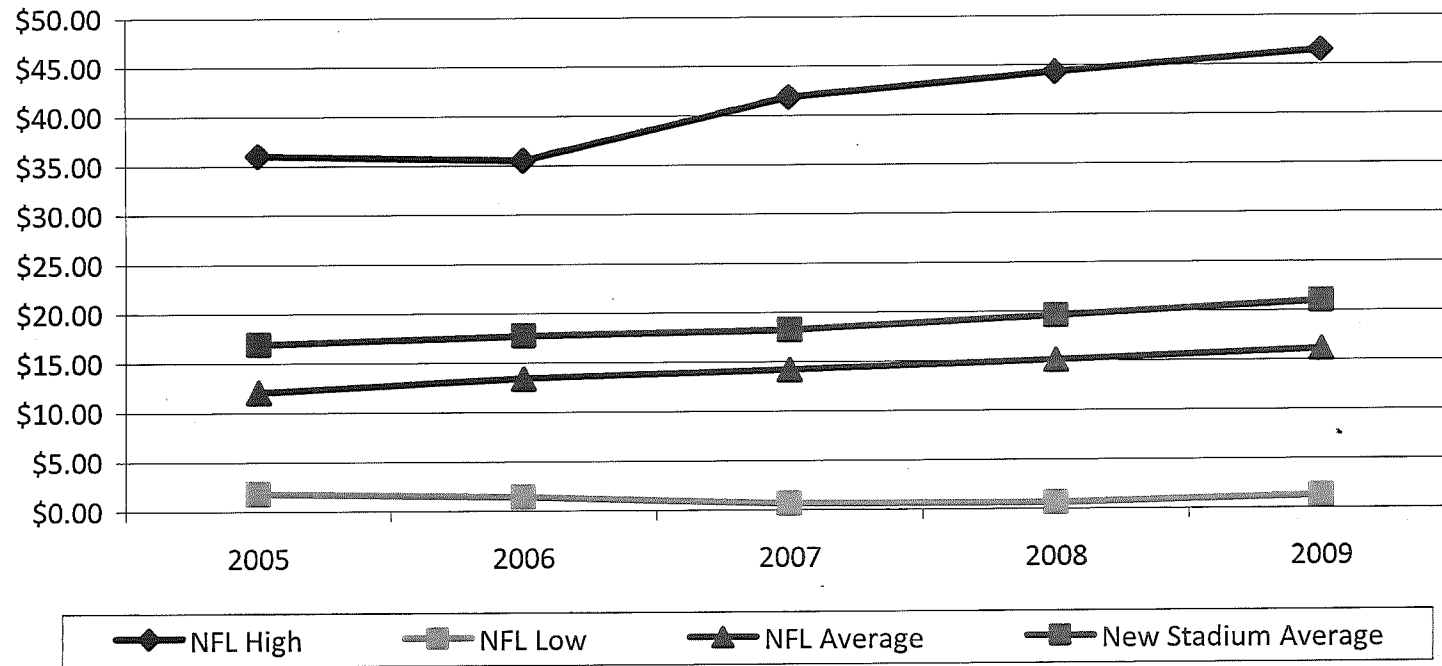
Source: NFL



Ticket Sales Analysis

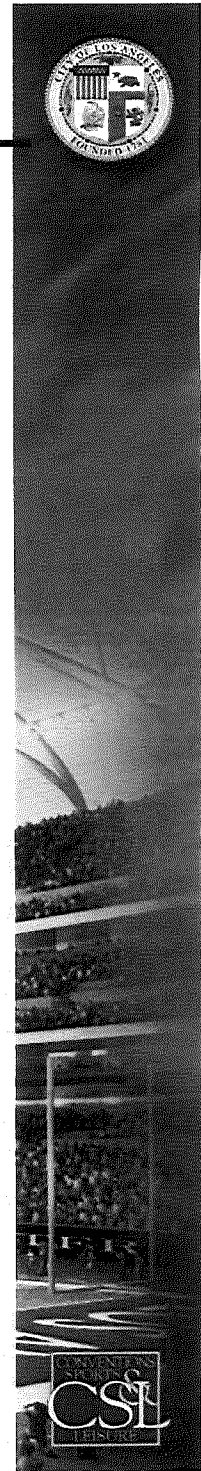


5-Year Average Club Seat Premium - NFL Markets



Note: New stadium average includes stadiums built since 1996.

Source: NFL





Private Seat License Analysis

NFL Markets



**PRIVELEGED AND
CONFIDENTIAL DRAFT**
For Discussion Purposes Only



Private Seat License Analysis



NFL Stadium Seat License Programs

Team	Stadium	Year Opened	Stadium Capacity	Number of Seat Licenses	Licenses as Percent of Capacity	Seat License Price Range	Total Seat License Revenue Goal
Dallas Cowboys	Cowboys Stadium	2009	80,000	56,314	70%	\$2,000 - \$150,000	\$650,000,000
New York Giants	New Meadowlands Stadium	2010	82,500	75,261	91%	\$1,000 - \$20,000	\$400,046,000
New York Jets	New Meadowlands Stadium	2010	82,500	47,804	58%	\$2,500 - \$30,000	\$325,879,000
Carolina Panthers	Bank of America Stadium	1996	71,215	62,400	88%	\$600 - \$5,400	\$195,000,000
Oakland Raiders	Oakland-Alameda Coliseum	1996	63,026	45,000	71%	\$250 - \$4,000	\$84,000,000
St. Louis Rams	Edward Jones Dome	1995	65,419	57,800	88%	\$250 - \$3,000	\$74,000,000
Baltimore Ravens	M&T Bank Stadium	1998	68,447	65,700	96%	\$250 - \$3,000	\$72,300,000
Tennessee Titans	LP Field	1999	68,402	61,500	90%	\$250 - \$4,500	\$71,000,000
Philadelphia Eagles	Lincoln Financial Field	2003	67,502	29,000	43%	\$1,500 - \$3,145	\$60,000,000
Chicago Bears	Soldier Field	2003	61,500	27,500	45%	\$900 - \$10,000	\$55,000,000
Houston Texans	Reliant Stadium	2002	67,120	45,420	68%	\$600 - \$4,200	\$50,000,000
Pittsburgh Steelers	Heinz Field	2001	64,128	49,533	77%	\$250 - \$2,700	\$45,221,000
Cleveland Browns	Browns Stadium	1999	69,405	49,733	72%	\$300 - \$2,350	\$35,000,000
Cincinnati Bengals	Paul Brown Stadium	2000	64,521	42,000	65%	\$300 - \$1,500	\$25,000,000
Seattle Seahawks	Qwest Field	2002	64,897	8,356	13%	\$2,000 - \$3,000	\$20,500,000
Average		2002	69,400	48,200	69%	\$860 - \$16,500	\$144,196,000

**PRIVILEGED AND
CONFIDENTIAL DRAFT**
For Discussion Purposes Only



Private Seat License Analysis



NFL Seat Licensing - Secondary Market Comparison

Team	Stadium	Year Opened	Original Average Price	2010 Average Asking Price	Compound Annual Growth Rate
Pittsburgh Steelers	Heinz Field	2001	\$913	\$13,518	28.1%
Chicago Bears	Soldier Field	2003	\$2,000	\$14,543	28.1%
Philadelphia Eagles	Lincoln Financial Field	2003	\$2,069	\$7,041	16.5%
Baltimore Ravens	M&T Bank Stadium	1998	\$1,100	\$5,051	12.4%
Houston Texans	Reliant Stadium	2002	\$1,101	\$2,496	9.5%
Cincinnati Bengals	Paul Brown Stadium	2000	\$595	\$1,559	9.2%
Cleveland Browns	Cleveland Browns Stadium	1999	\$704	\$1,830	8.3%
Seattle Seahawks	Qwest Field	2002	\$2,453	\$4,866	7.9%
Tennessee Titans	LP Field	1999	\$1,154	\$2,740	7.5%
Carolina Panthers	Bank of America Stadium	1996	\$3,125	\$3,642	1.0%
St. Louis Rams	Edward Jones Dome	1995	\$1,280	\$1,414	0.6%
Dallas Cowboys	Cowboys Stadium	2009	\$13,966	n/a	n/a
Average			\$2,686	\$4,518	10.1%

Source: PSL Marketplace; Season Ticket Rights; Bears, Bengals, Rams, Ravens, Steelers and Texans PSL Marketplace.

