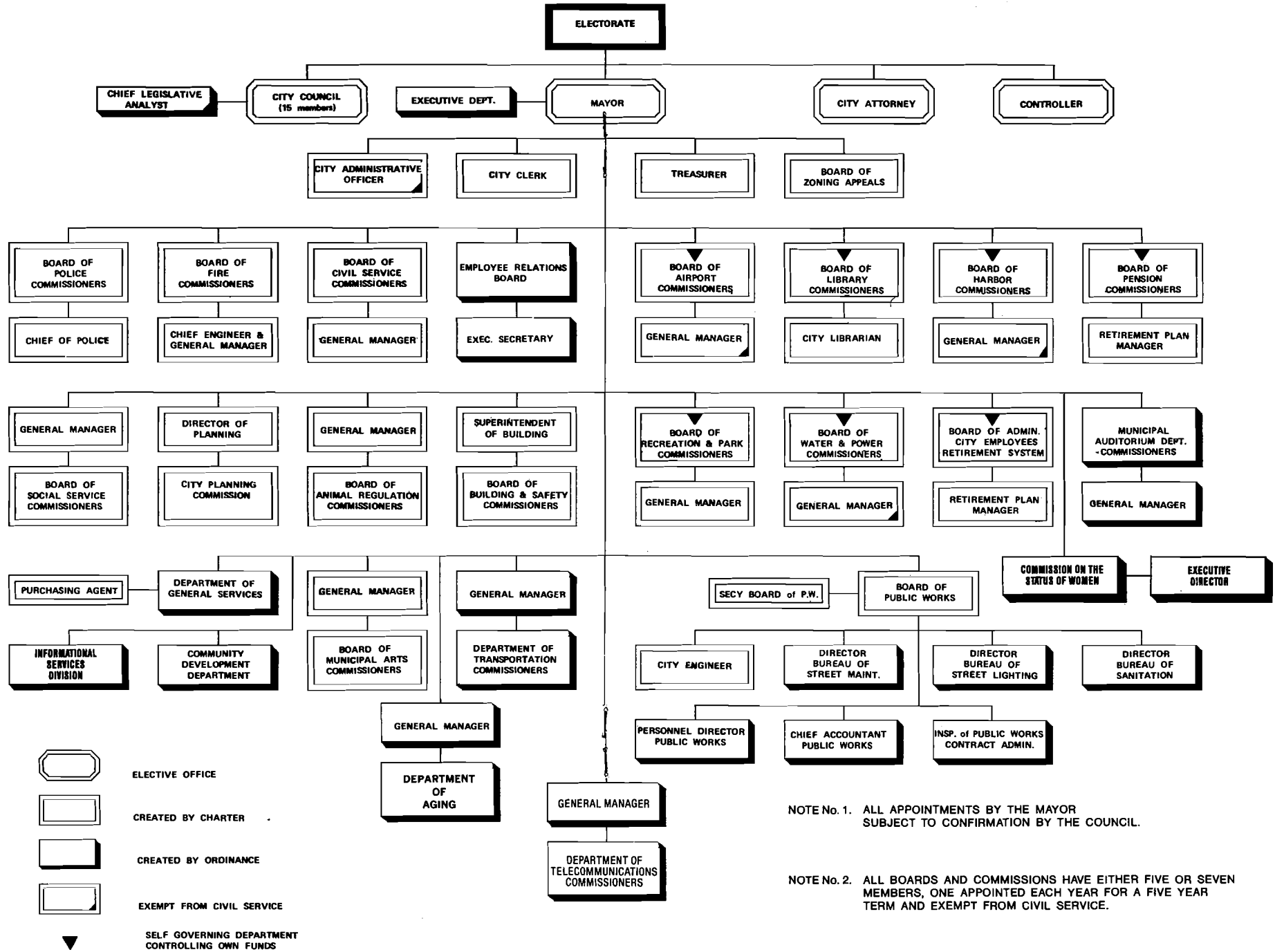

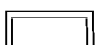
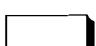
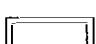



1989 Your Government at a Glance



-  ELECTIVE OFFICE
-  CREATED BY CHARTER
-  CREATED BY ORDINANCE
-  EXEMPT FROM CIVIL SERVICE
-  SELF GOVERNING DEPARTMENT CONTROLLING OWN FUNDS

NOTE No. 1. ALL APPOINTMENTS BY THE MAYOR SUBJECT TO CONFIRMATION BY THE COUNCIL.

NOTE No. 2. ALL BOARDS AND COMMISSIONS HAVE EITHER FIVE OR SEVEN MEMBERS, ONE APPOINTED EACH YEAR FOR A FIVE YEAR TERM AND EXEMPT FROM CIVIL SERVICE.