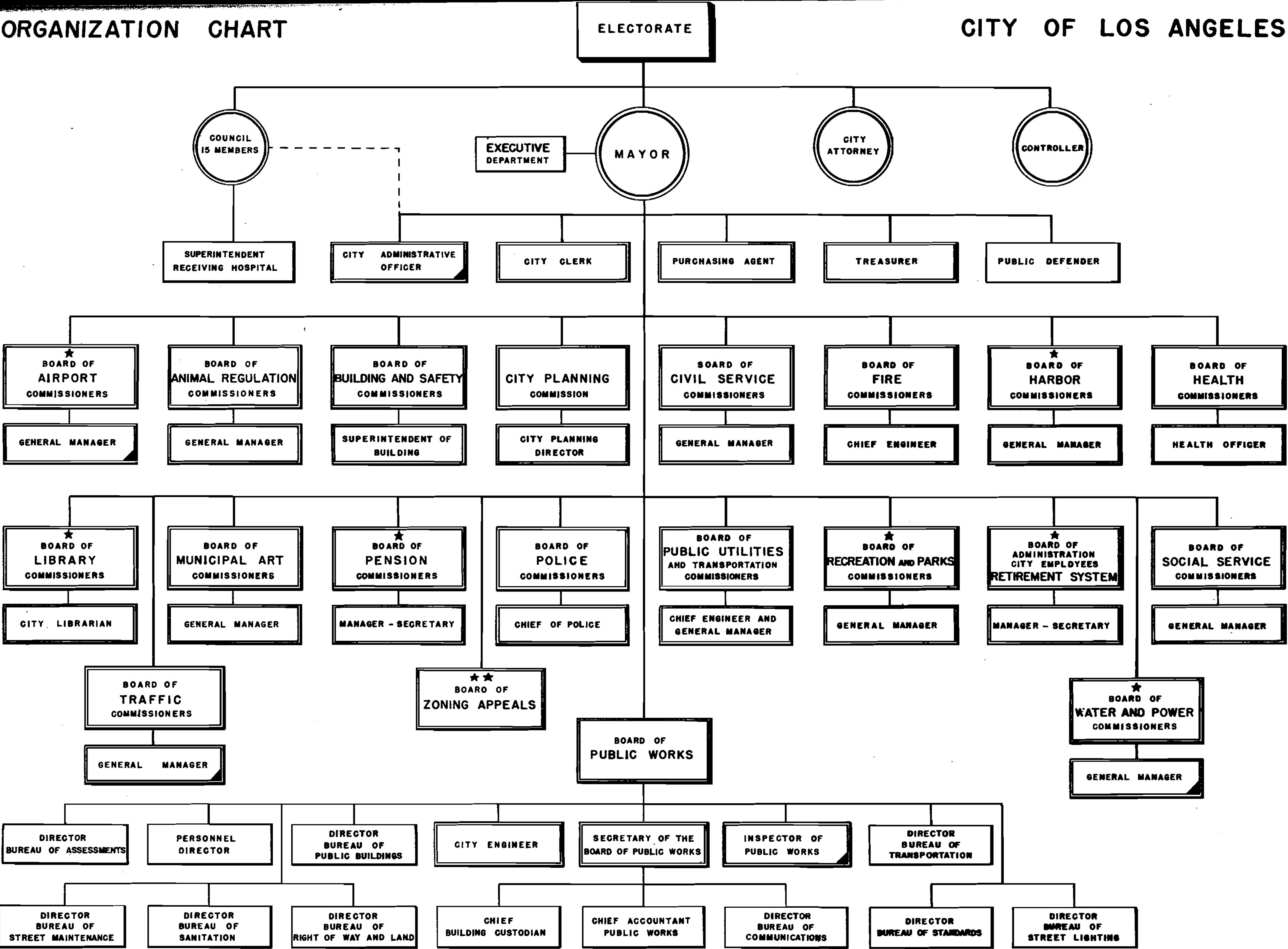


ORGANIZATION CHART

CITY OF LOS ANGELES



LEGEND: ○ - ELECTIVE OFFICE
□ - CREATED BY CHARTER
□ - CREATED BY ORDINANCE
□ - EXEMPT FROM CIVIL SERVICE
★ - SELF-GOVERNING DEPARTMENT, CONTROLLING OWN FUNDS.
★★ - THREE MEMBERS - SIX YEAR TERMS

NOTE: #1 ALL APPOINTMENTS BY THE MAYOR SUBJECT TO CONFIRMATION BY THE COUNCIL.
#2 ALL BOARDS AND COMMISSIONS EXCEPT ZONING APPEALS, HAVE FIVE MEMBERS, ONE APPOINTED EACH YEAR FOR FIVE YEAR TERM, ALL EXEMPT FROM CIVIL SERVICE.

CITY CLERK'S OFFICE
JULY 1955