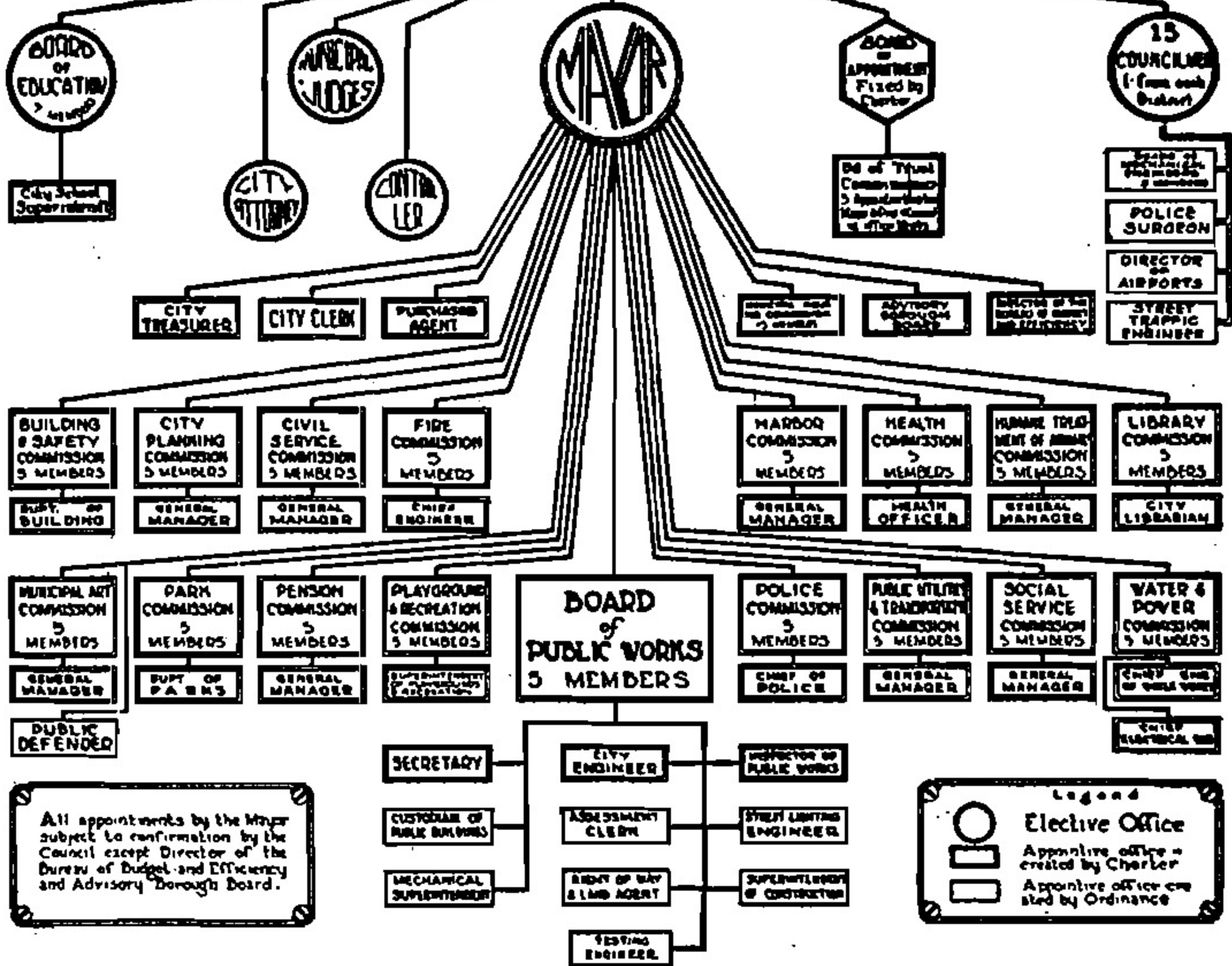


# CHART SHOWING PLAN OF CITY GOVERNMENT OF LOS ANGELES

PREPARED BY BUREAU OF BUDGET AND EFFICIENCY



**CITY ELECTORATE**



All appointments by the Mayor subject to confirmation by the Council except Director of the Bureau of Budget and Efficiency and Advisoryorough Board.

**Legend**

- Elective Office
- Appointive office - created by Charter
- Appointive office created by Ordinance