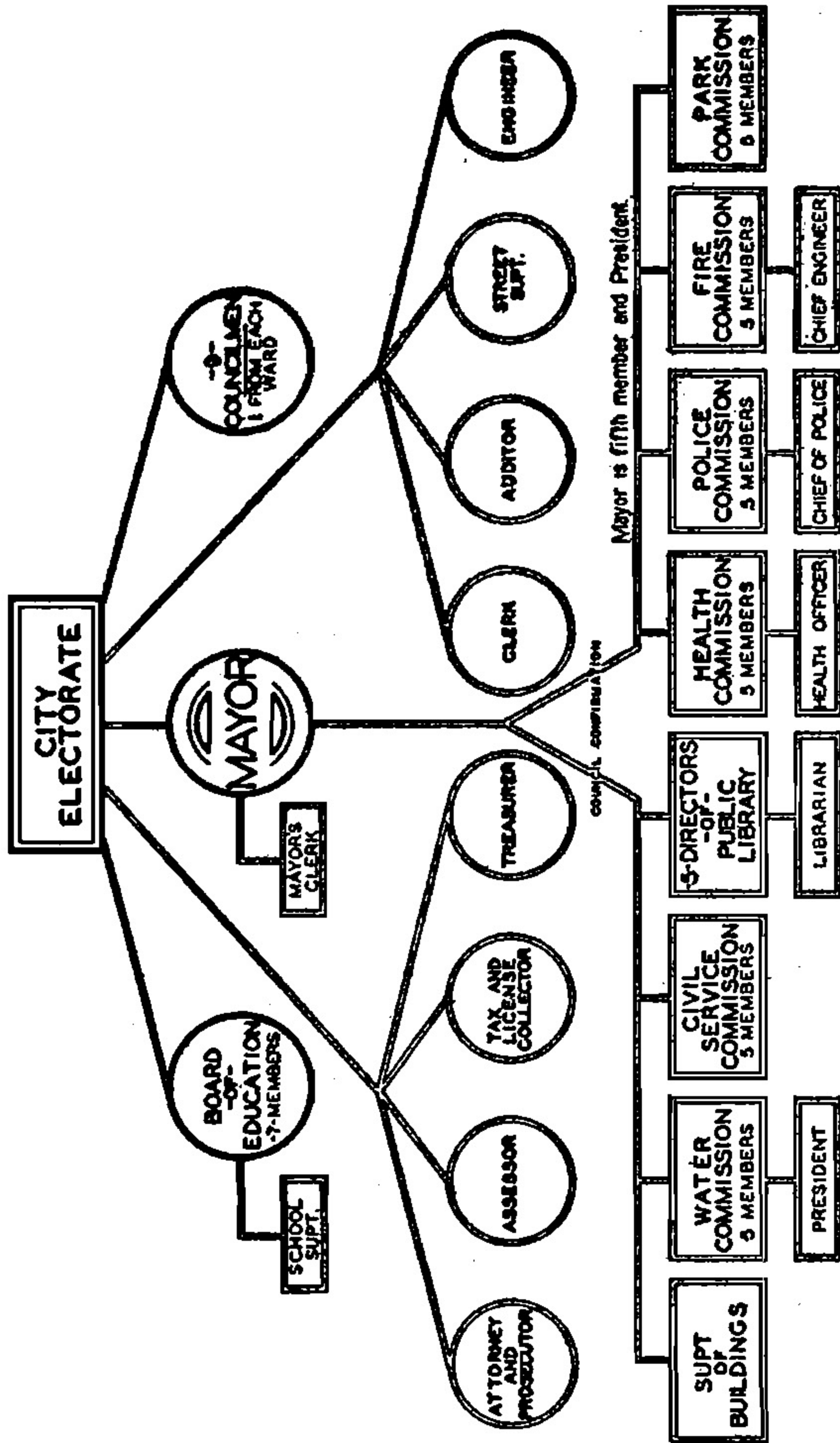


CHART SHOWING
CHARTER ORGANIZATION
 OF

CITY OF LOS ANGELES
YEAR 1909



NOTE: POLICE JUDGES NOT IN CHARTER-BUT ELECTED UNDER STATE LAW
 PREPARED BY BURTON S. MYRTEN

A. W. BRADY DRAFTSMAN