

# Promotoras as Partners in Advancing Clean Energy in Disadvantaged Communities



**Viridis**  
CONSULTING

**City of Los Angeles Health Commission**

**February 12, 2024**



## **Mabell Garcia Paine**

Founder and President, Viridis Consulting, LLC

- Native Angeleno, raised in the Pico Union neighborhood
- 25 Years of Experience in the energy industry
- Viridis, a minority woman-owned, small business focused on accelerating energy equity
- Member of CPUC working groups – Equity, Underserved, CDEI
- Bachelor of Arts, CSUN; Master of Science, USC
- Board President of WRISE, Women in Renewable Industries and Sustainable Energy, Los Angeles Chapter
- City of Pasadena, City Commissioner



---

## What do we mean by **equity**?

---

Equity is an end state in which all groups have access to the resources and opportunities necessary to improve the quality of their lives.

---

## What do we mean by **energy equity**?

---

Energy equity recognizes that disadvantaged communities have been historically marginalized and overburdened by pollution, underinvestment in clean energy infrastructure, and lack of access to energy-efficient housing and transportation.

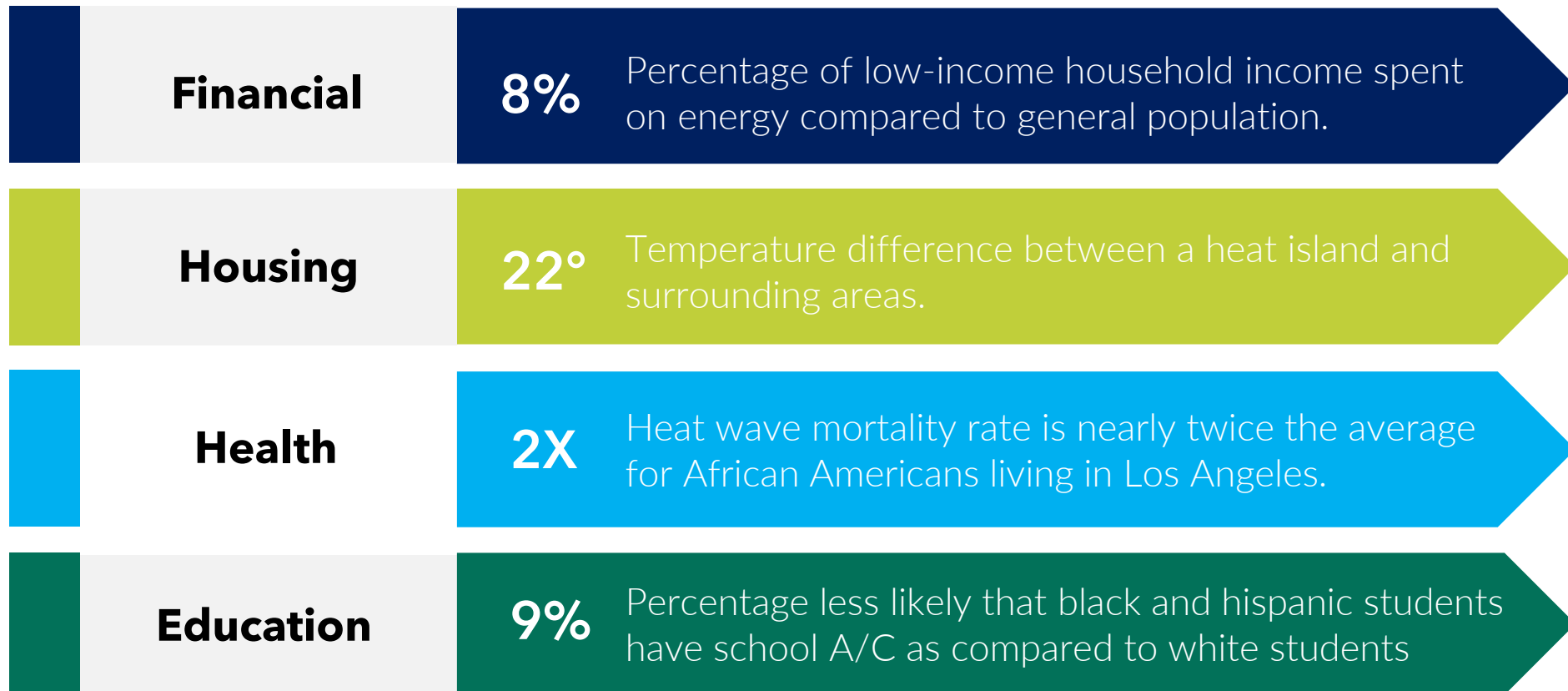
Sources: Our County Los Angeles Countywide Sustainability Plan  
Pacific Northwest National Laboratory

# Climate change is inequitable



# Disproportionate Energy Burden

Children, the elderly, low-income households, the socially isolated, people who rely on public assistance and people who lack access to A/C are disproportionately negatively affected.



Lack of Access to Home Air Conditioning in the Los Angeles-Long Beach Metropolitan Area:

- 59% of African-Americans
- 55% of Latinos
- 52% of communities living below the poverty line
- **General Population: 40%**



Study: The Climate Gap: Environmental Health and Equity Implications of Climate Change and Mitigation Policies in California, November 2011; USCB 2004

# Mismatched Priorities?



California

- Decarbonization
- Energy efficiency
- Water heating conversion
- Gas vehicle conversion



Low Income  
Communities

- Living wage
- Healthcare
- Affordable and quality housing
- Clean air

***No, because there are overlaps.  
The problem lies in the current strategies and the  
few direct, tangible immediate-term benefits to low-income communities.***

Energy Efficiency Measures	Possible Health Outcomes
Insulation and Air Sealing	<ul style="list-style-type: none"> <li>▪ Reduced deaths due to temperature extremes</li> <li>▪ Reduced symptoms of respiratory disease</li> </ul>
Improved Heating Systems	<ul style="list-style-type: none"> <li>▪ Reduced deaths due to temperature extremes</li> <li>▪ Reduced symptoms of respiratory disease</li> <li>▪ Reduced stress and infectious disease</li> </ul>
Improved Cooking Systems	<ul style="list-style-type: none"> <li>▪ Reduced symptoms of respiratory disease</li> <li>▪ Reduced risk of cancer</li> </ul>
Improved Ventilation	<ul style="list-style-type: none"> <li>▪ Reduced symptoms of respiratory disease</li> <li>▪ Reduced risk of cancer</li> <li>▪ Reduced symptoms of cardiovascular disease</li> <li>▪ Reduced arthritis</li> <li>▪ Reduced depression</li> </ul>



Promotoras are community members who know the social networks and strengths of their community

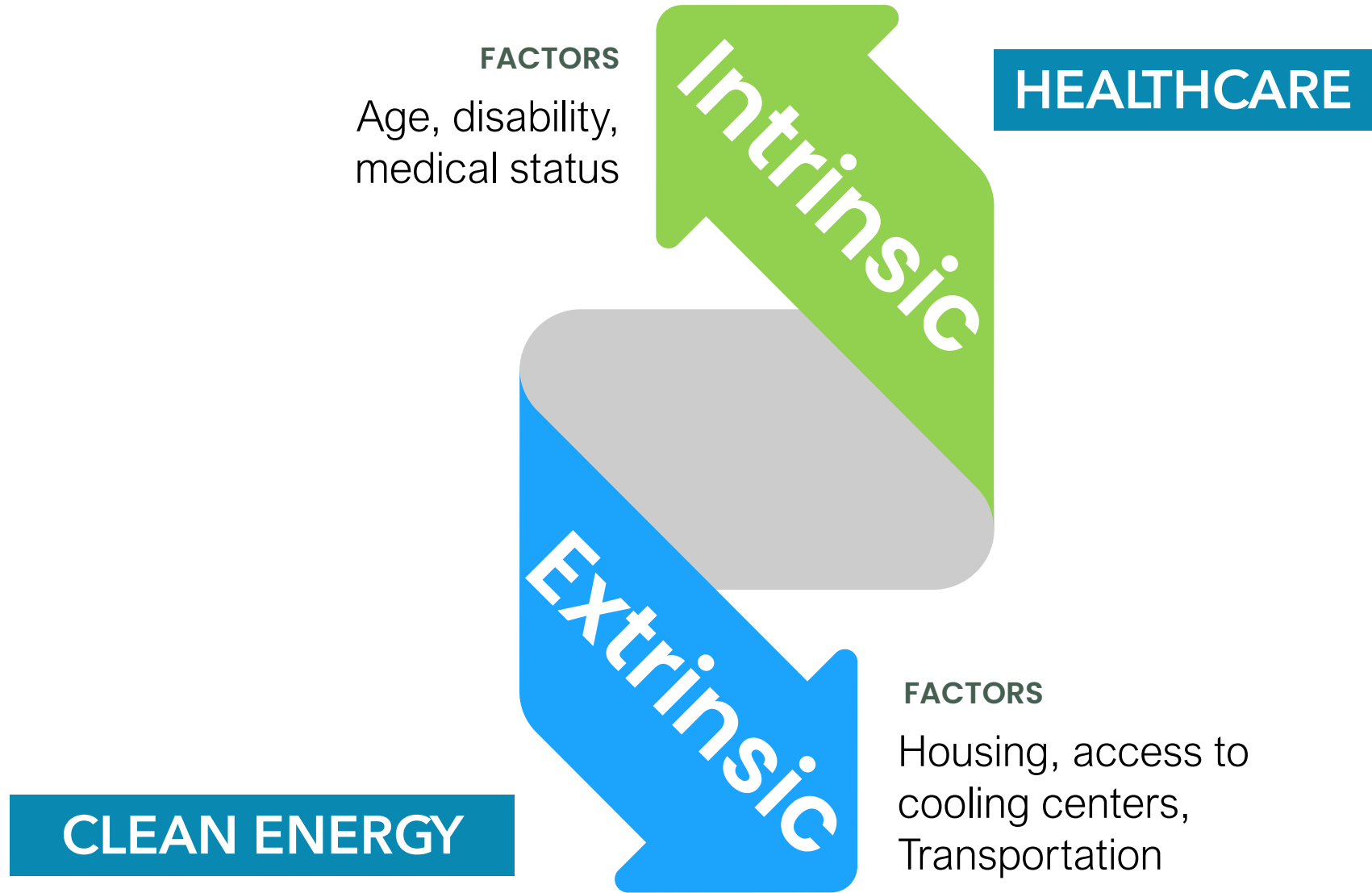


# Energy Equity Strategies

Working with Promotoras can more clearly prove the benefits of clean energy, improving the lives of people in low income communities



## Tie Clean Energy and Healthcare Closer Together



**THANK YOU!**

**Viridis**  
CONSULTING