



Craig Pulsipher
Associate Director, Government Affairs

Terry Smith
Director, Sexual Health and HIV Prevention Services

APLA Health

- Mission is to achieve health care equity and promote well-being for the LGBTQ+ and other underserved communities and people living with and affected by HIV
- Health center locations in Baldwin Hills, Long Beach, and Miracle Mile that provide medical, dental, behavioral health, and HIV specialty care as well as PrEP, HIV prevention, and STD screening and treatment
- Provide 20 different services at 16 locations throughout LA County
- For people living with HIV, we offer housing support, benefits counseling, home healthcare, food pantries, among several other critically needed services



STDs in Los Angeles County

- In 2018, there were a total of 96,342 cases of STDs:
 - Majority of reported cases (66%) were chlamydia followed by gonorrhea (26%) and syphilis (8%)
 - 54 congenital syphilis cases
- From 2008 to 2017:
 - Rate of chlamydia cases increased 34%
 - Rate of gonorrhea cases increased 183%
 - Rate of early syphilis cases increased 189%
- Congenital syphilis cases increased 671% from 2010 to 2018
 - More than 120 cases in 2020

STDs in Los Angeles County

- In 2020, CDC confirmed that a new, antibiotic-resistant strain of gonorrhea began to spread across the country
- CDPH also issued an alert in December of 2020 about the rising number of disseminated gonococcal infections
- STDs disproportionally impact gay and bisexual men, people of color, transgender individuals, and youth
- Poverty, homelessness, stigma, health literacy, lack of access to culturally appropriate services, and increasing meth use are driving factors

LA County STD Priorities

- Improve early detection through testing of vulnerable populations
- Interrupt disease transmission through treatment of cases and partners
- Educate community to raise awareness of STDs
- Create effective policies to impact health care provider behavior

STD Funding

- Historic rise in STDs has not been mirrored by increased investment in STD programs
- Federal STD prevention funding has seen a 40 percent reduction in buying power since 2003 (after adjusting for inflation)
- Despite \$82 million request, federal STD funding increased by just \$3.51 million in 2019 (first funding increase since 2003)
- Despite \$20 million request, California STD funding increased by just \$7 million in 2019
- Despite \$30 million request, LA County allocated \$5 million in tobacco settlement funds for STDs in 2018



Virtual Programming

Substance Abuse

- Party Wise
- Project
IMPACT
- Project TND

Sexual Health

- PrEP Express
- Healthy Him
- Trans-
Connections
- Proyecto
Impacto
(Mente)

Social Media



Daily Conversations on Facebook and Instagram

- Sexual Health
- Pop Culture
- PrEP/PEP
- Substance Abuse/Use
- Transgender Issues

Swab and Chill

At-Home HIV Testing Initiative

- OraQuick rapid test kit will be mailed to clients.
- Prevention staff will provide counseling and guidance via virtual platforms (zoom or Google hangout).

LINK UP!

Virtual Linkage to Care Program

- A navigation program for new and previously diagnosed persons in need of HIV care and support.

SWAB AND Chill Instructions

Before Using The Test Kit

- Please do not eat, drink, or use any mouthwash products 30 minutes prior.
- Remove all dental products such as dentures, partials or any other products that cover your gums.
- Have a timer handy during use of the test.



Using The Test Kit

Step 1 - Open test kit to find test tube & test tube holder.

Step 2 - Open test tube and place in test tube holder.

Step 3 - Take swabbing stick out of the testing kit, DO NO TOUCH any part of the flat pad of the swabbing stick.

Step 4 - Using the flat pad of the swabbing stick, place it firmly against your gums. Swab ONCE along the top gums and ONCE along the bottom gums.

Step 5 - Place the flat pad of the swabbing stick into the testing tube liquid and let sit for a minimum of 20 minutes and a maximum of 40 minutes before reading results. DO NOT READ RESULTS AFTER 40 MINUTES!

Reading The Results

NEGATIVE: 1 line next to C

POSITIVE: 2 lines (one by the C and one by the T)
Please contact the Swab & Chill Team. They will help navigate you through the next steps.

If there is NO LINE next to the C or a reddish background making you unable to clearly read the test, the test is not working probably. Call our Swab & Chill team to have another test mailed to you.



Swab and Chill



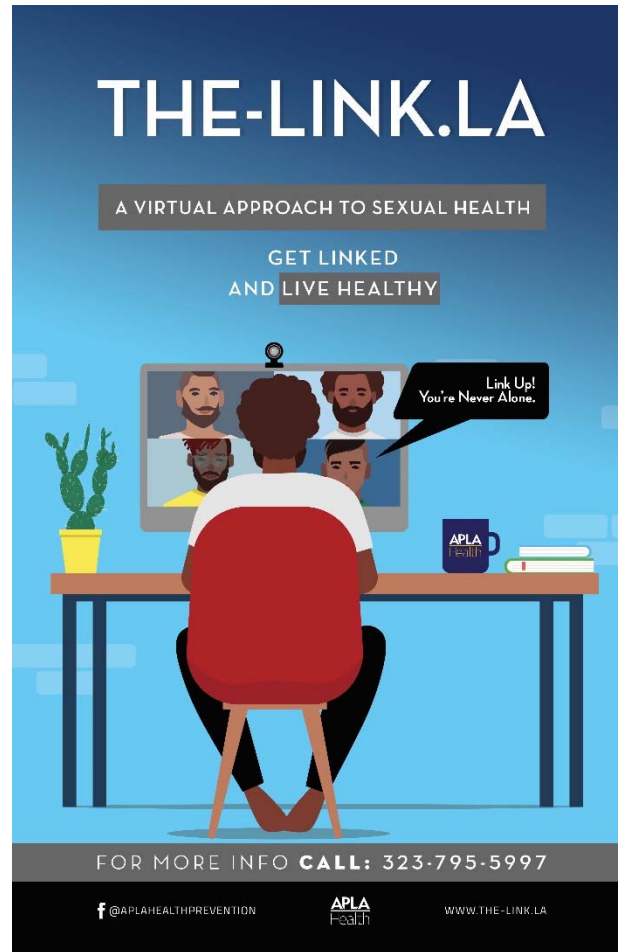
The-Link.LA

Prevention Dept. Website

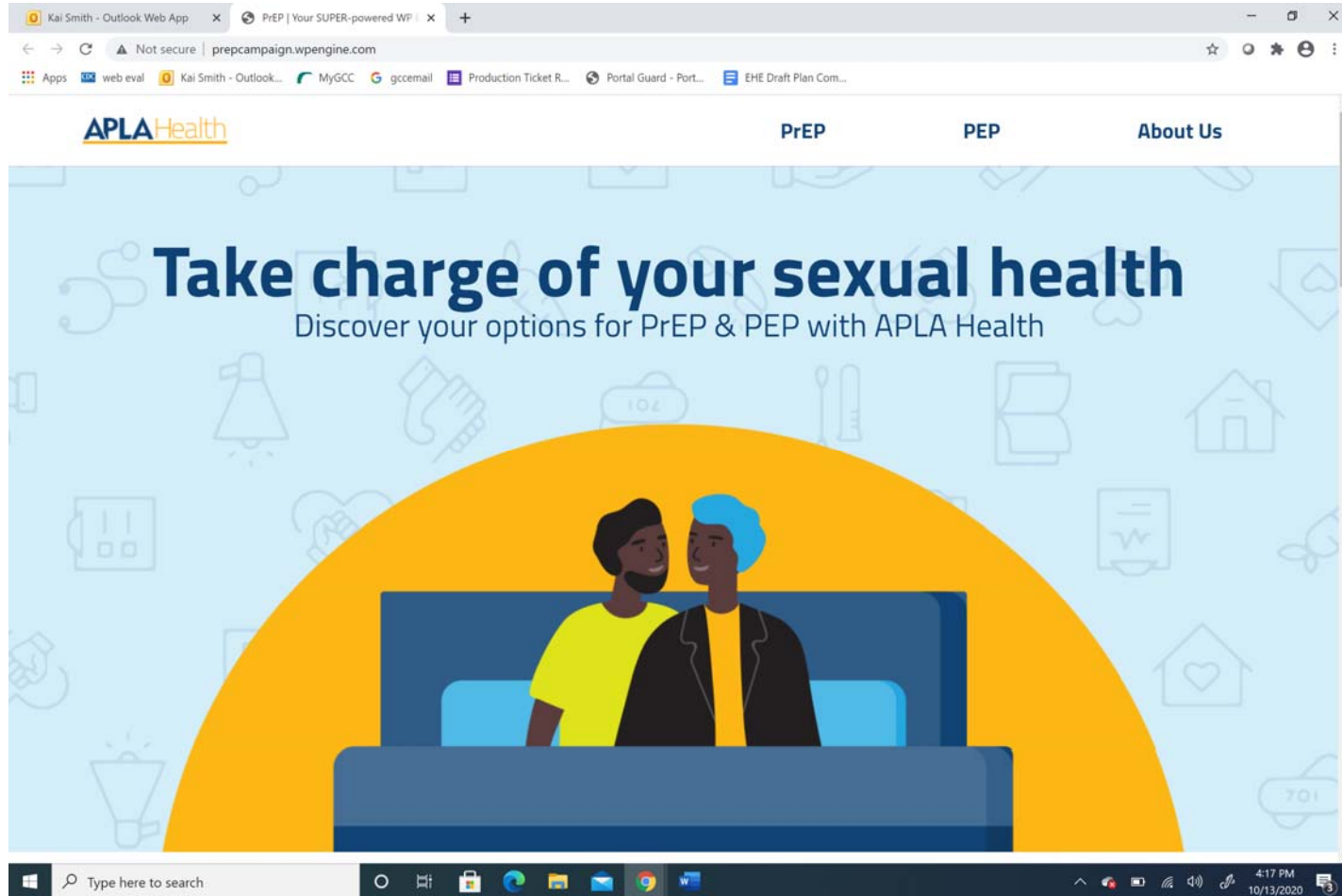
PrEP Express

Biomedical HIV Prevention Website

The Link-LA Website



PrEP Express Website



STD Advocacy

- Launch of National STI Strategic Plan in 2020 – no commitment of federal funding
- Statewide advocates coalition calling for an additional \$3 million for STD prevention and treatment
- SB 306
 - Expanding access to STD services through the Family PACT program
 - Increasing prevention through innovative strategies like home testing + expansion of health professionals that conduct rapid testing in the community
 - Revising current law to support the delivery and increased utilization of expedited partner therapy
 - Updating state law to require congenital syphilis testing during the third trimester of pregnancy

APLA

Health