



Strategies to Address the COVID-19 Pandemic in Los Angeles County

Los Angeles City Health Commission
September 14, 2020

Jeffrey D. Gunzenhauser, MD, MPH

Chief Medical Officer and

Director, Bureau of Disease Control

Los Angeles County Department of Public Health





- COVID-19 by the numbers
- State tiered framework
- Strategies: Compliance, Containment and Collaboration
 - Enforcement plan
 - Contact tracing enhancements
 - Working with labor and worker health councils
 - Updated Department of Public Health website
- Specific Questions
- Q&A

COVID-19 by the Numbers

United States

As of 9/10/2020

6,365,595

Total Cases

190,909

Total Deaths

California

As of 9/10/2020

742,865

Total Cases

13,978

Total Deaths

Los Angeles County

As of 9/10/2020

236,459

Total Cases

5,746

Total Deaths

Data do not include the Cities of Long Beach and Pasadena



Daily Reported Number of COVID-19 Cases, Past 7-day Average– April 17 to September 7, 2020



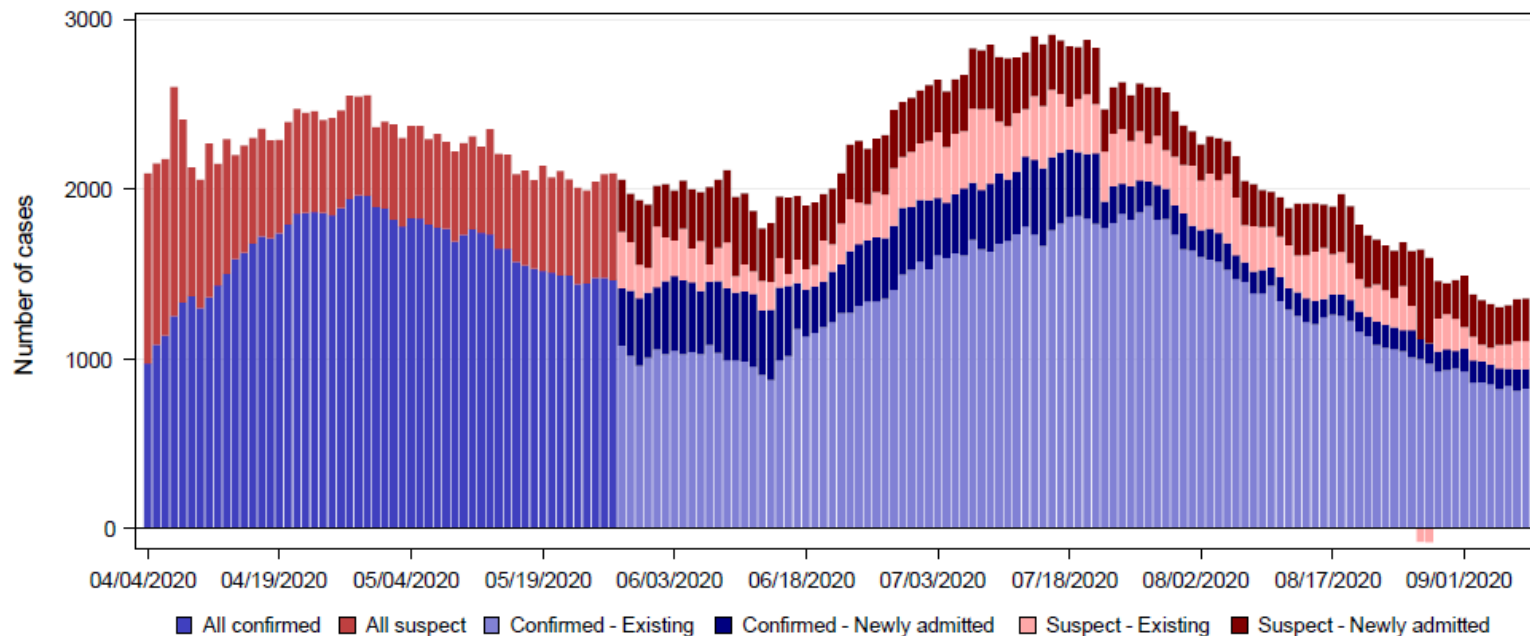
Los Angeles County Hospitalized Patients Report

Date Reported: 09/08/20

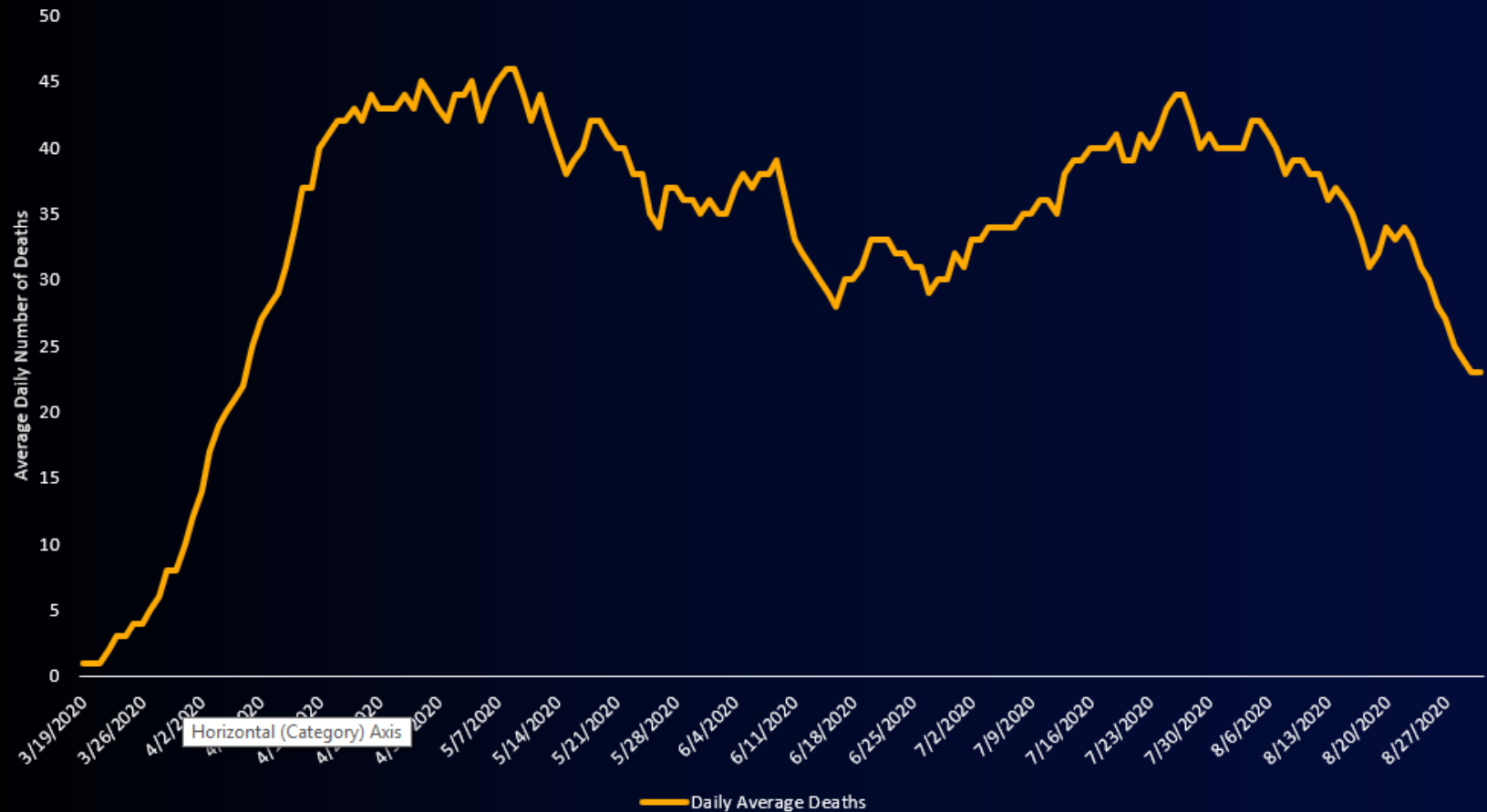
92 Hospitals Reporting

Number of hospitalized confirmed COVID patients	Number of hospitalized suspect COVID patients	Total confirmed and suspect hospitalized COVID patients	Difference in confirmed case count from yesterday	Percent change in confirmed case count from prior day	Number of confirmed patients newly admitted	Number of suspect patients newly admitted	Number of confirmed cases currently in ICU	Percent of confirmed COVID patients currently in ICU	Number of confirmed and suspected COVID patients currently ventilated	Percent of confirmed and suspected COVID patients currently ventilated
940	415	1355	4	0.4%	116	251	307	33%	243	18%

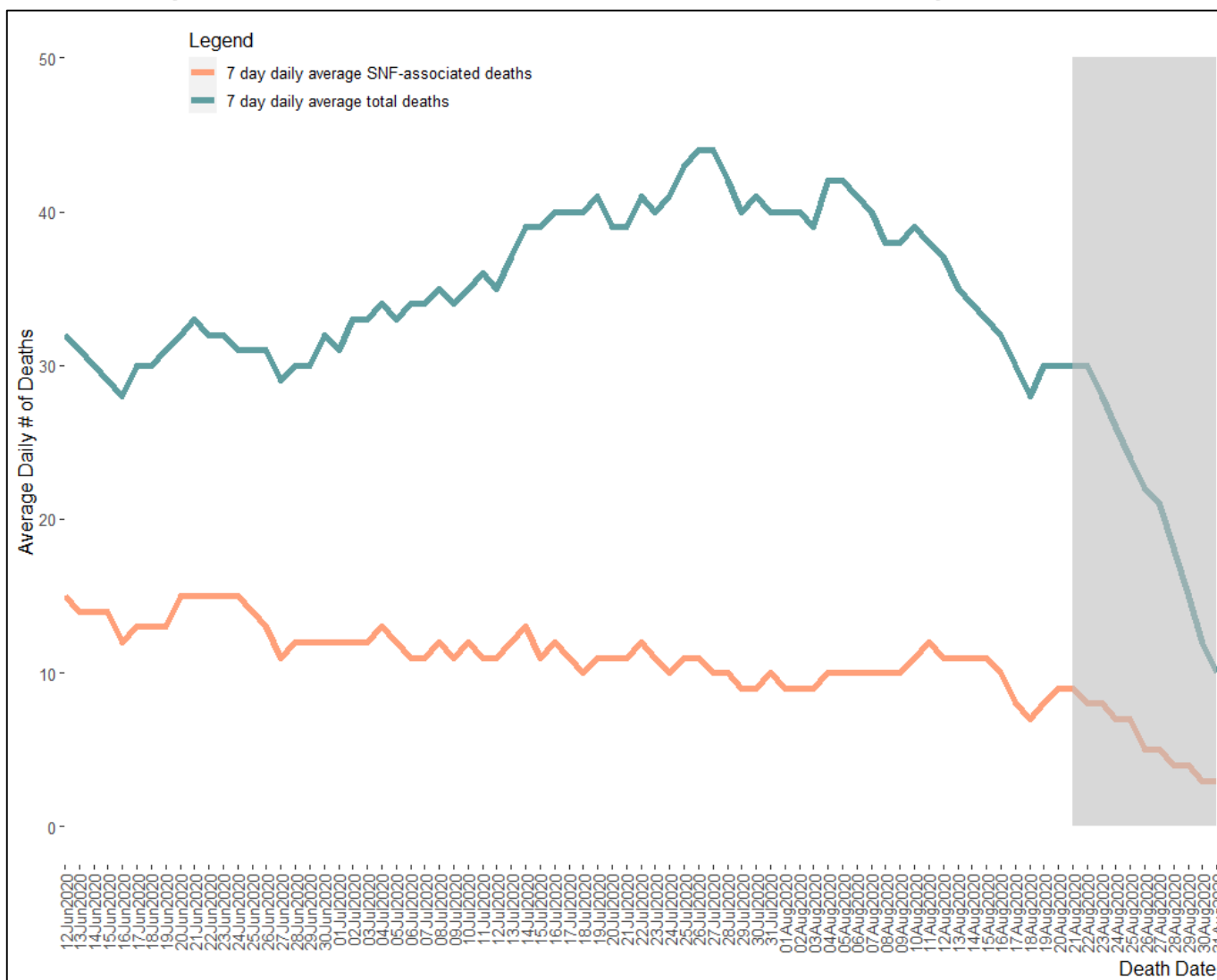
Number of confirmed and suspect cases



Daily Number of Deaths, Past 7-day Average from 7 days Ago— March 19 to August 31, 2020

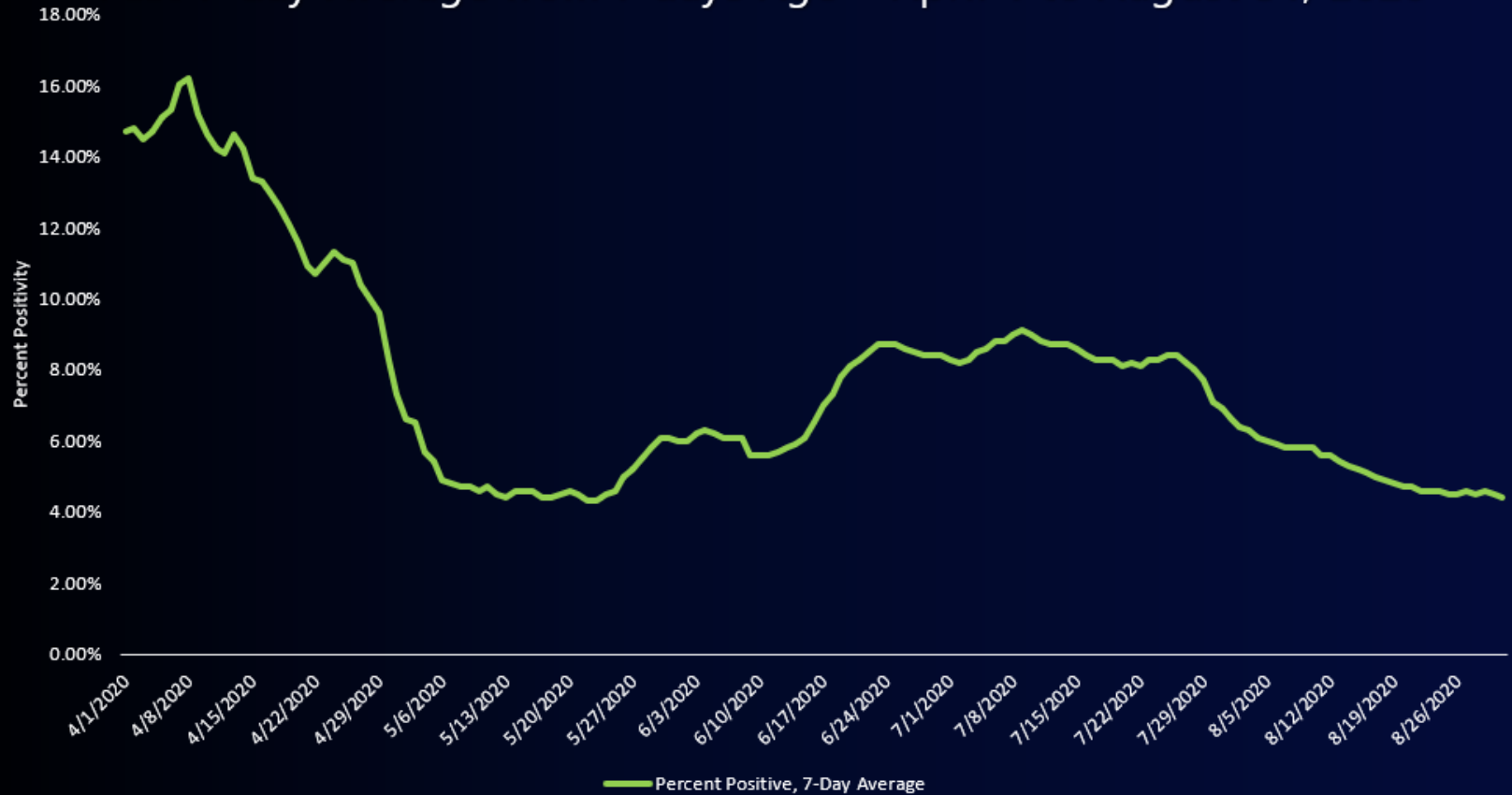


7-Day Daily Average SNF-Associated Deaths and Daily Average Total Deaths, June 12-Aug 31, 2020, LAC





Daily COVID-19 Percent Positivity by Specimen Collection Date for Diagnostic Tests in Los Angeles County, Past 7-day Average from 7 days Ago – April 1 to August 31, 2020





Cumulative Case Rates* for Covid-19 per 100,000– September 7, 2020

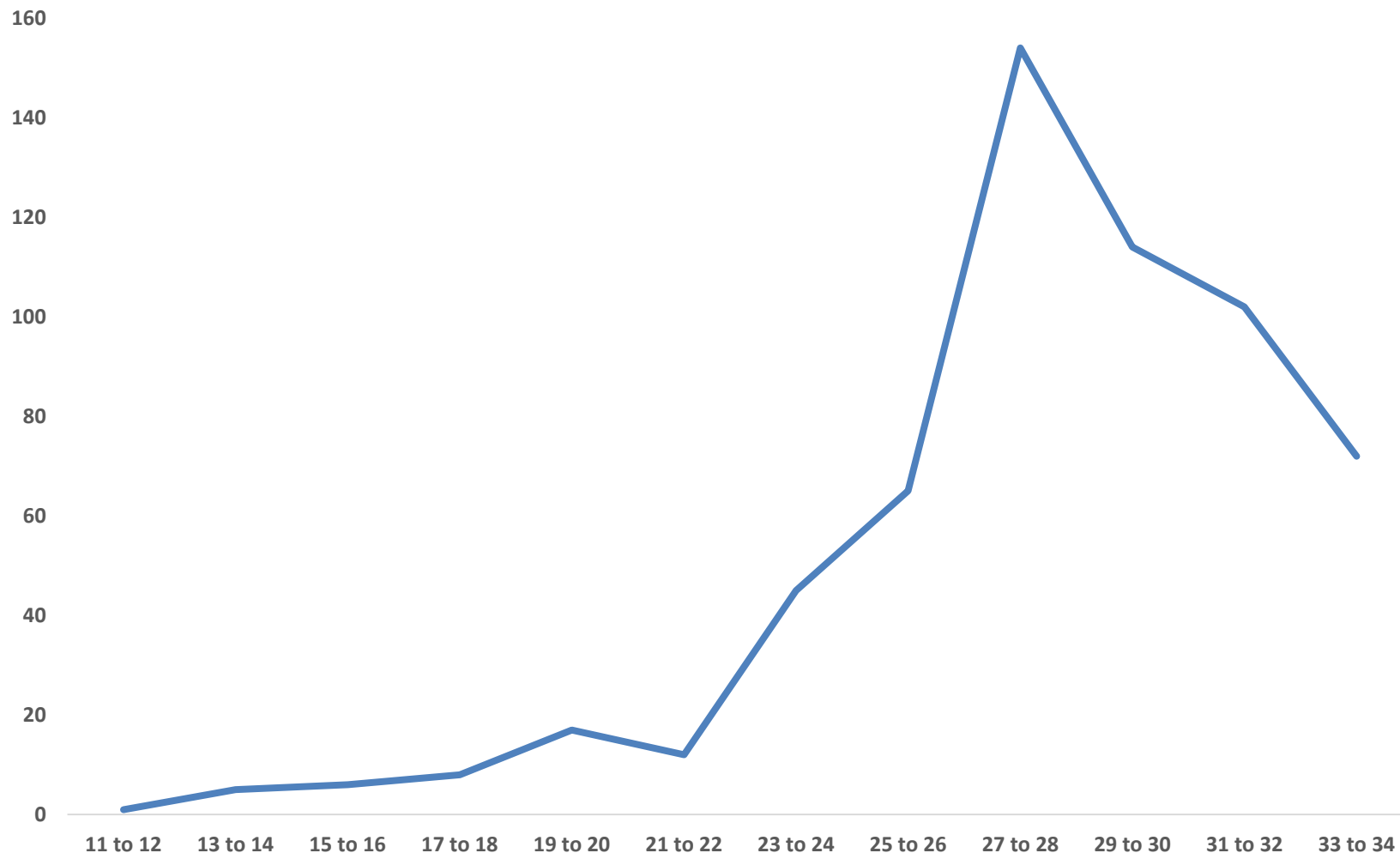
		Case Rate*
Los Angeles County Total		2,379
Race/Ethnicity	Native Hawaiian or Other Pacific Islander Asian	3,474
	Latinx	1,846
	American Indian or Alaska Native	934
	Black	836
	White	635
	Asian	463

*Testing Rates are Age-Adjusted



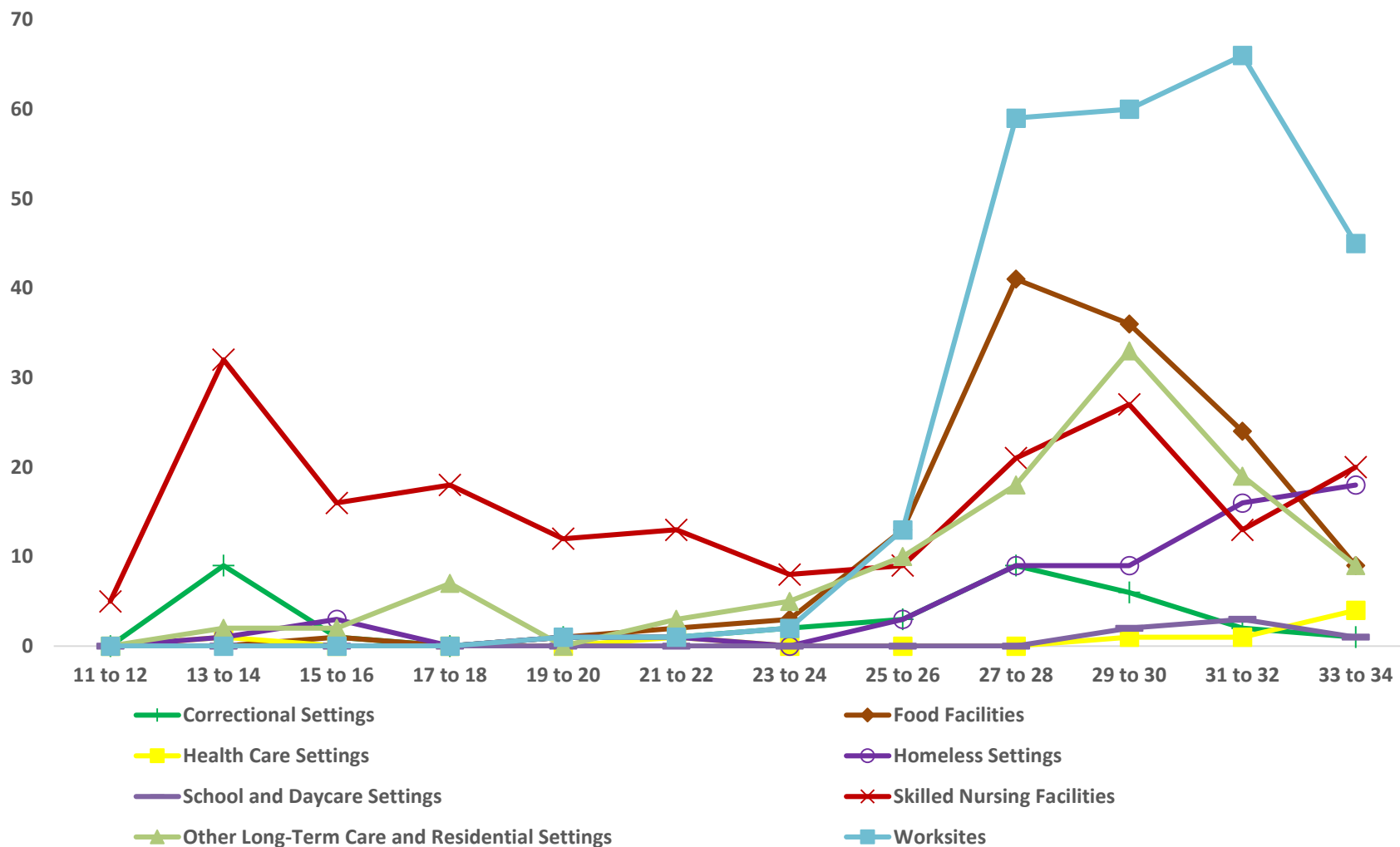


All Non-Healthcare, Non-Residential Workplace Outbreaks by Week Opened, March 15-August 29 (Epi Weeks 11-34), 2020





Open Outbreaks by Week Opened and Setting Type, March 15-August 29 (Epi Weeks 11-34), 2020



County Tier Assignments Based on Risk of Community Transmission

Understand your county's status

Every county in California is assigned to a tier based on its test positivity and adjusted case rate. At a minimum, counties must remain in a tier for at least 3 weeks before moving forward. Data is reviewed weekly and tiers are updated on Tuesdays. To move forward, a county must meet the next tier's criteria for two consecutive weeks. If a county's metrics worsen for two consecutive weeks, it will be assigned a more restrictive tier. Public health officials are constantly monitoring data and can step in if necessary.

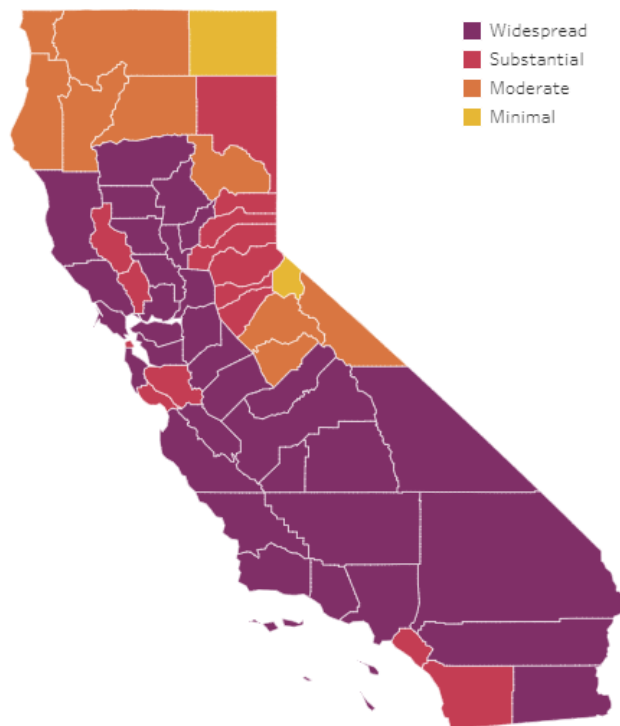
Statewide Metrics

9.1

New COVID-19 Positive
cases per day per 100K

5.3%

Positivity Rate



Data shown for week ending 8/29/20

Framework Metrics According to Tiers Based on Risk of Community Disease Transmission, California

	Higher Risk → Lower Risk of Community Disease Transmission			
	Widespread Tier 1	Substantial Tier 2	Moderate Tier 3	Minimal Tier 4
Measure*				
Adjusted Case Rate for Tier Assignment** (Rate per 100,000 excluding prison cases, 7 day average with 7 day lag)	>7	4-7	1-3.9	<1
Testing Positivity*** (Excluding prison cases, 7 day average with 7 day lag)	>8%	5-8%	2-4.9%	<2%

*To advance to the next tier, a county must also meet health equity measures.

**Adjusted case rate will be determined using confirmed (by PCR) cases, and will not include state and federal inmate cases. Assignment of a case rate tier includes an adjustment factor for counties that are testing above the state average.

*** Excludes state and federal inmate cases

Strategies

COMPLIANCE

CONTAINMENT

COLLABORATION



Enforcement Plan

Businesses Requiring Health Permit/License		
First Violation	Second Violation	Third Violation
Monetary Fine Notice of Violation <ul style="list-style-type: none">• Notice of Violation issued• Follow-up visit scheduled (3-7 days)• Notice of intent to suspend Public Health permit	Monetary Fine Increases 7 Day Suspension <ul style="list-style-type: none">• 7 day suspension of Public Health Permit• Follow-up visit scheduled before reinstatement	Monetary Fine Increases 30 Day Suspension <ul style="list-style-type: none">• Compliance verification inspection• 30 day suspension of Public Health Permit• Intent to revoke Public Health permit• Possible referral to District Attorney



Enforcement Plan

Businesses Not Requiring Health Permit/License

After an initial complaint is sent to Public Health, a letter will be sent notifying the responsible party of needed corrections. If there is a second complaint, Public Health will initiate field visits.

First Violation	Second Violation	Third Violation
Monetary Fine Notice of Violation <ul style="list-style-type: none">• Follow-up visit scheduled (3-7 days)• Notice of intent to suspend Public Health permit	Monetary Fine Increases 7 Day Suspension <ul style="list-style-type: none">• Issue Health Officer Order to Close• Contact local law enforcement• Refer to County Counsel for temporary restraining order	Monetary Fine Increases 30 Day Suspension <ul style="list-style-type: none">• Compliance verification inspection• Contact local law enforcement for issuance of misdemeanor citation• Refer to District Attorney for filing of misdemeanor charges• Possible referral to District Attorney

Contact Tracing Enhancements

**Contact Tracing
Incentive
Program**

**Support for
Isolation and
Quarantine**

**COVID-19 Case
Info Line**

Working with Labor and Worker Health Councils

Public Health Councils

- Groups of workers trained to monitor compliance with County Health Officer Orders (HOO) at their worksites

Certified Worker and Community-Based Organizations

- Third-party organizations certified by DPH to serve as the intermediary between public health councils and DPH*

LA County Dept. of Public Health (DPH)

- Collaborates with third-party organizations to address reports of non-compliance at worksites

Training and Support Organizations

- Provide training, technical assistance, and other support to public health councils, certified worker orgs, and DPH

NEW WEBSITE



The screenshot shows the homepage of the COVID-19 website. At the top is a teal navigation bar with links: COVID-19 Home, About COVID-19, Guidances, Protection, News Updates, and Help. Below the navigation bar is a large teal banner with a virus particle background. The banner features the text 'COVID-19' in large yellow letters, followed by 'All the information you need to Stay Safe, Stay Healthy, Stay Home' in white. Below the banner is a yellow section with three yellow chevrons pointing right. Under the chevrons is the heading 'Reopening LA County' and the text 'Learn more about reopening protocols and metrics'. Below this are three buttons: 'Health Officer Order', 'FAQ', and 'What's Open'. At the bottom of the yellow section are three buttons: 'Contact Tracing', 'Home Isolation', and 'Home Quarantine'. To the right of the yellow section is a white section titled 'COVID-19 Data Pages' with the text 'Daily updates, data trends and graphs, and explainers about what the data is telling us LA County's response.' Below this text is a grid of six buttons: 'Daily COVID-19 Data Page', 'Locations & Demographics', 'COVID-19 Data Dashboard', 'COVID-19 Recovery Metrics', 'Contact Tracing Dashboard', and 'Skilled Nursing Facility Dashboard'.

COVID-19 Home About COVID-19 Guidances Protection News Updates Help

COVID-19

All the information you need to
Stay Safe, Stay Healthy, Stay Home



Reopening LA County

Learn more about reopening protocols and metrics

[Health Officer Order](#) [FAQ](#) [What's Open](#)

[Contact Tracing](#) [Home Isolation](#) [Home Quarantine](#)

COVID-19 Data Pages

Daily updates, data trends and graphs, and explainers about what the data is telling us LA County's response.

Daily COVID-19 Data Page	Locations & Demographics
COVID-19 Data Dashboard	COVID-19 Recovery Metrics
Contact Tracing Dashboard	Skilled Nursing Facility Dashboard

Answers to Some Questions

- What evidence is there of the effectiveness of the strategies?
- How effective were previous plans?
- Are there opportunities to present data in different ways?
 - Adjust rates for cases that occur in high risk settings
 - Display health outcome data by BMI or narrower age categories
 - Breakdown of data by council or supervisor district
- What opportunities are there to improve communication?



Q&A





Thank You!

Jeffrey D. Gunzenhauser, MD, MPH

Bureau of Disease Control Director and Chief Medical Officer

Los Angeles County Department of Public Health

