

**2020 CENSUS AND REDISTRICTING  
TECHNICAL/EMPIRICAL CHALLENGES  
LOS ANGELES CITY**

Paul Ong  
April 13, 2021



UCLA Research Professor & Director of Center for Neighborhood Knowledge (affiliation for identification purpose only)

Economist and urban planner, specializing in spatial structures and inequality

Served on REAC, Census Monitoring Board; advisor for DOJ, NCI, NRC, TRB and others on national and state agencies; early adopter of GIS for redistricting.

# CONDUCTED SEVERAL ASSESSMENT OF 2020 CENSUS ENUMERATION

P Ong and J Ong, August 18, 2020. “Persistent Shortfalls and Racial/Class Disparities”. UCLA Asian American Studies Center, UCLA Center for Neighborhood Knowledge, and Ong & Associates.

P Ong and J Ong. June 11, 2020. “Persistent Shortfall and Racial/Class Disparities, 2020 Census Self-Response Rate.” UCLA Luskin School, Center for Neighborhood Knowledge and Latino Policy & Politics Initiative.

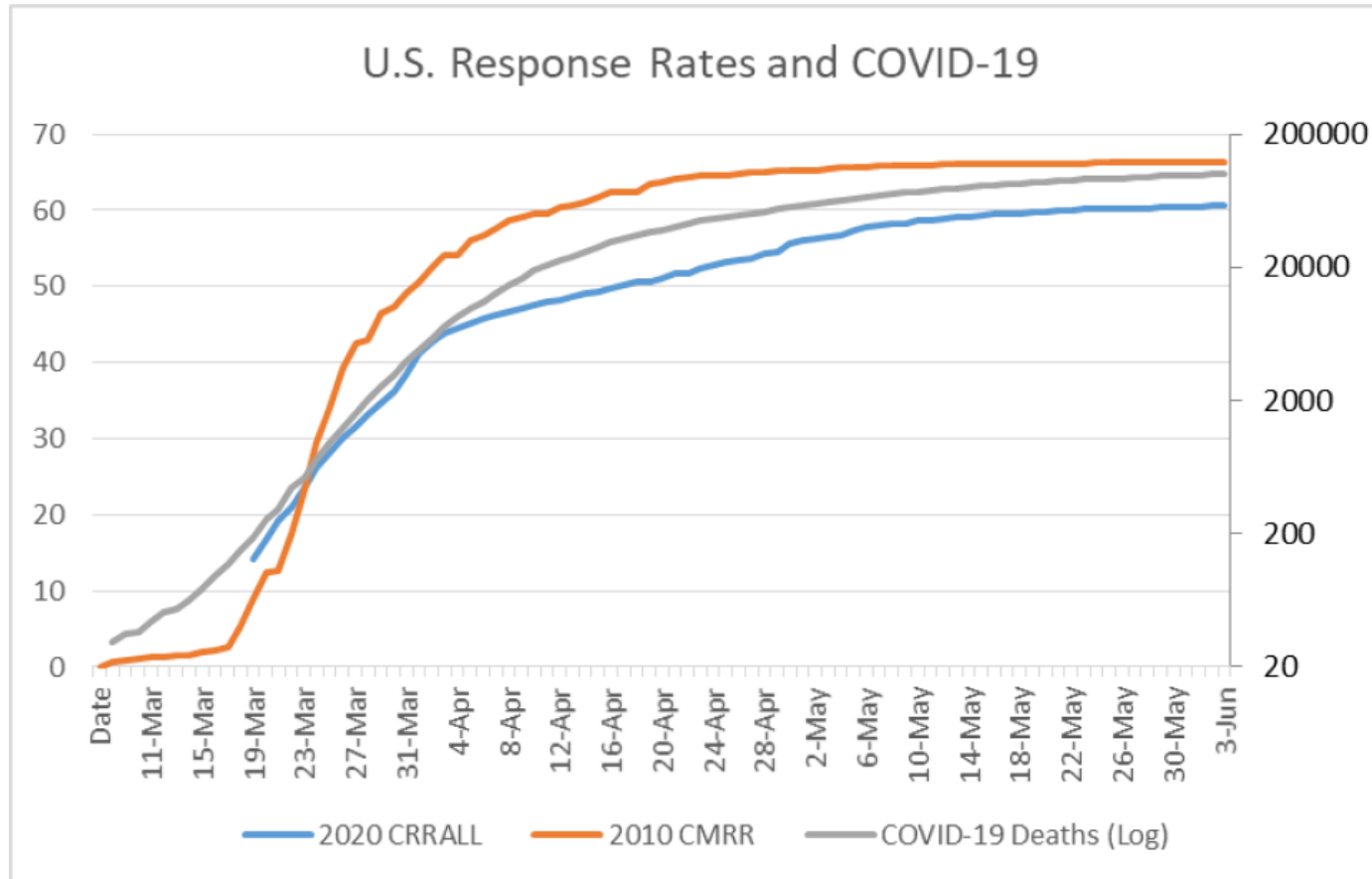
R Akee, P Ong, and D Rodriguez-Lonebear, Desi. May 15, 2020. “US Census Response Rates on American Indian Reservations in the 2020 Census and in the 2010 Census.” UCLA Center for Neighborhood Knowledge and American Indian Studies Center.

P Ong, E Ong, and J Ong. May 7 and May 12, 2020 “Los Angeles County 2020 Census Response Rate Falling Behind 11 Percentage Points and a Third of a Million Lower than 2010,” UCLA Center for Neighborhood Knowledge.

# THREE TECHNICAL/EMPIRICAL CHALLENGES

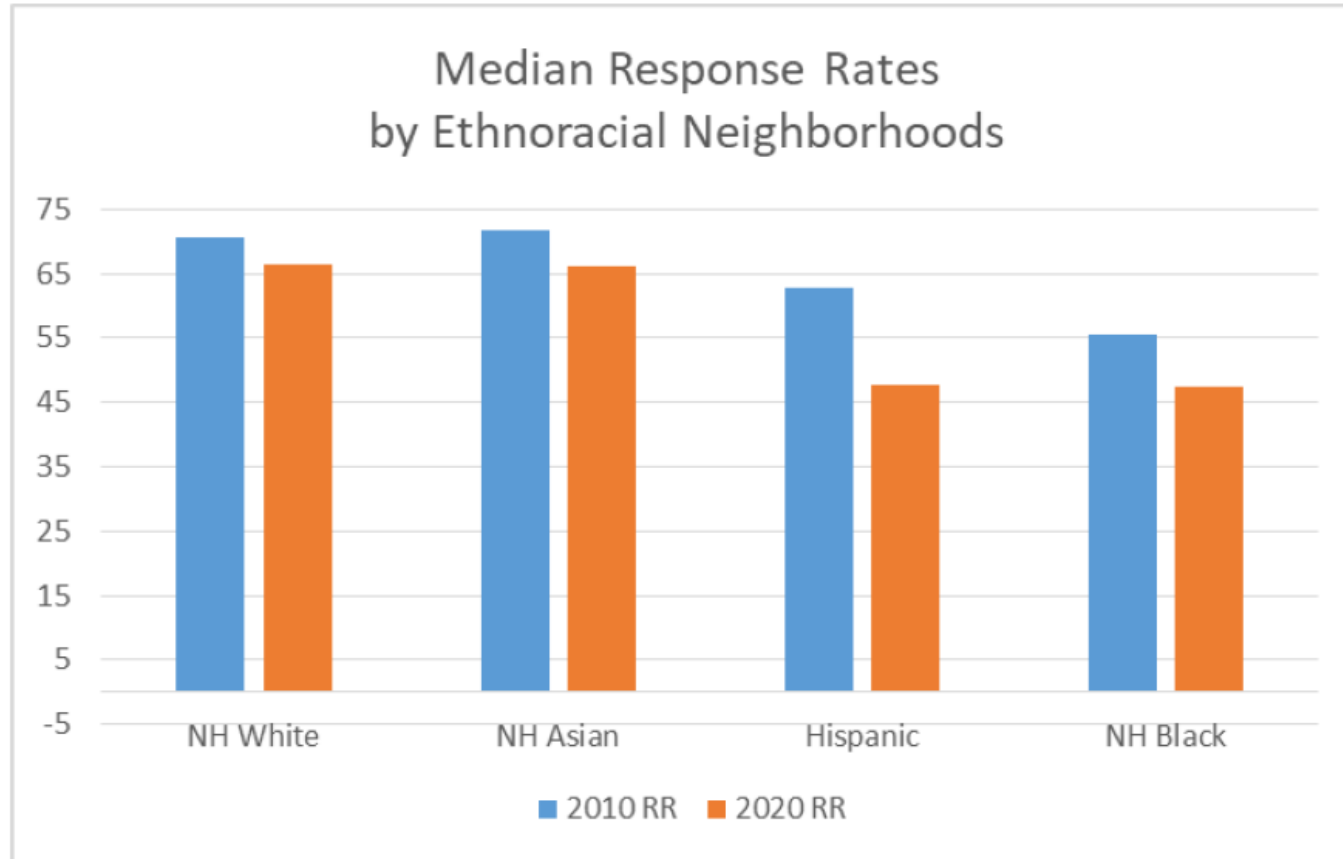
1. Differential undercount, likely worst in decades due to pandemic and attacks by former president.
2. Defining community of interest and multi-neighborhood commonality.
3. Small area population projections for implications over a decade following redistricting.

# UNDERCOUNTER LIKELY GIVE 2010 AND 2020 GAP



Self response stage for 2020 started strong, then ran into COVID-19 Crisis. Nationally, fell progressive behind From late March to mid April. Subsequently, some catch up but huge gap for follow up stage.

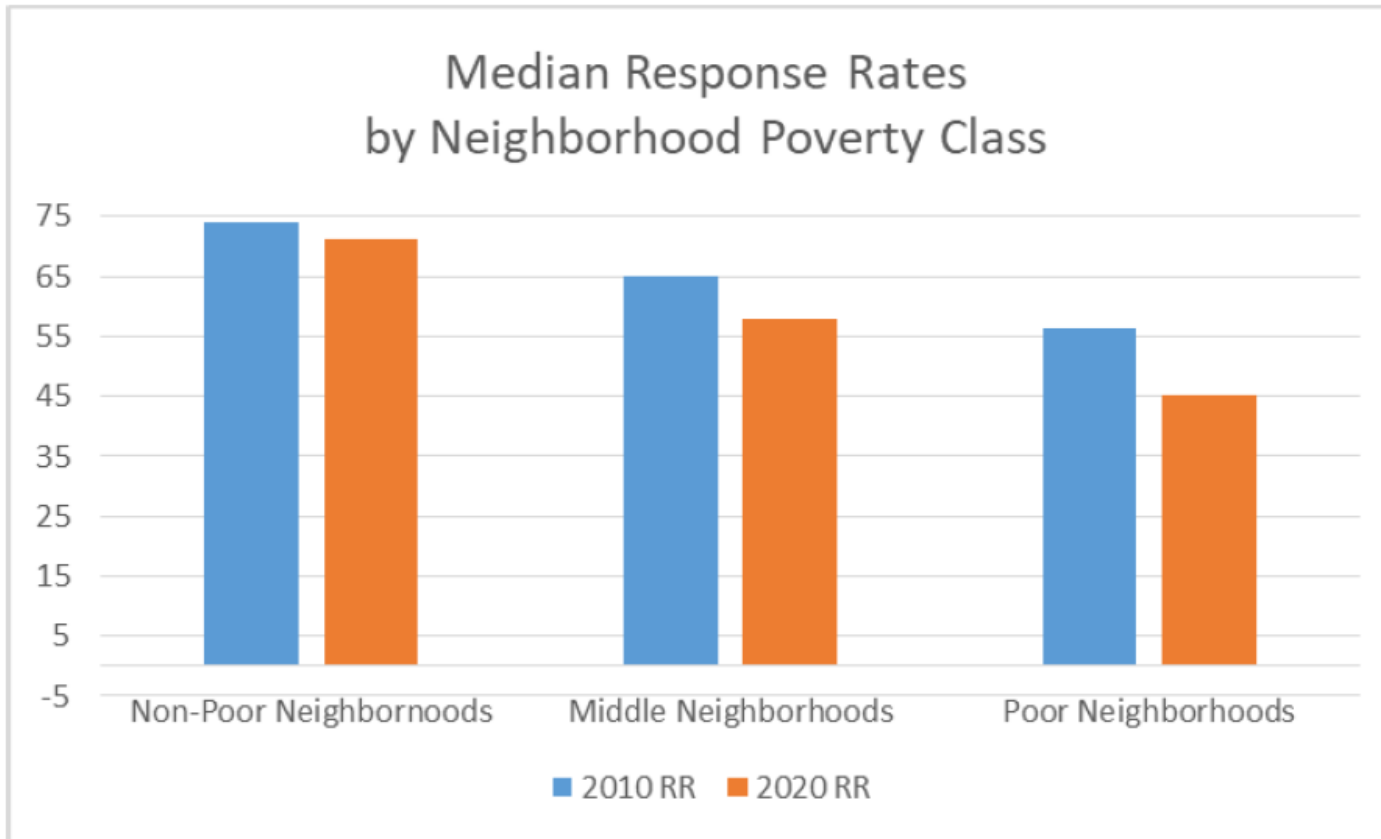
# COMMUNITIES OF COLORS MOST AFFECTED



Nationally, NH White neighborhoods had small gap relative to 2010, but Hispanic and Black neighborhoods experienced higher gaps. Asian neighborhood outcomes could vary by ethnicity.

Source: Ong & Associates, calculated from U.S. Census Bureau data.

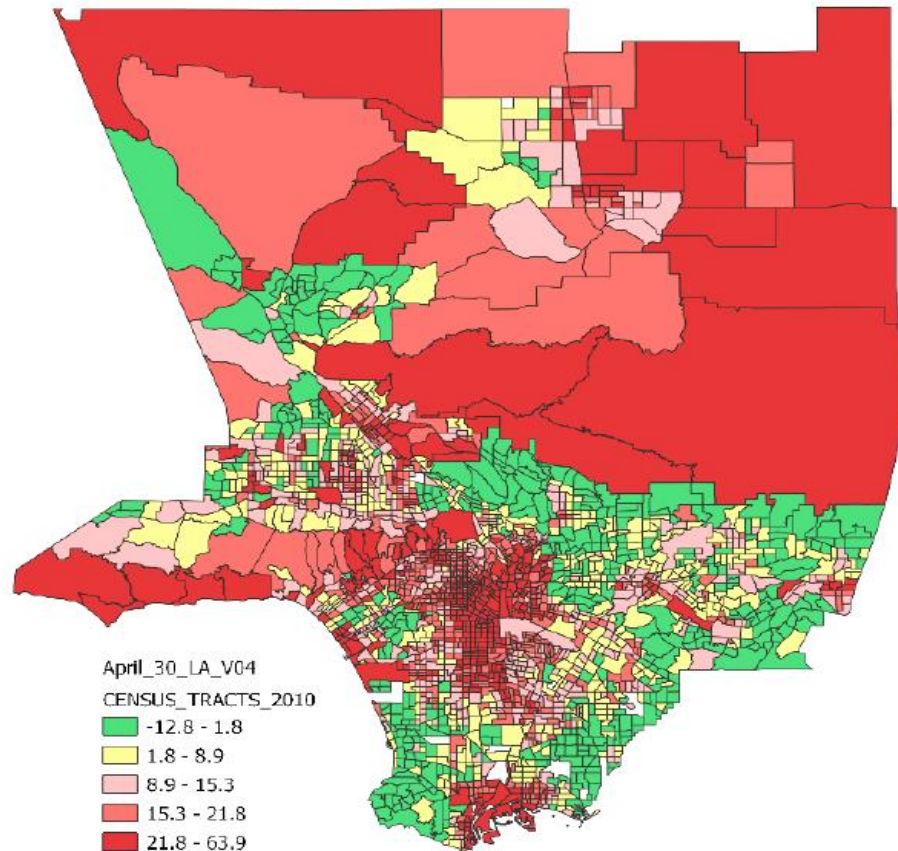
# POOR NEIGHBORHOODS HAD LARGER GAPS



Nationally, the 2020-2010 gap for higher income was minor, but the gap was substantial for poor neighborhoods.

Source: Ong & Associates, calculated from U.S. Census Bureau data.

# THE GAP AMONG LOS ANGELES NEIGHBORHOODS



The gap was largest in communities of color and low-income neighborhoods. Santa Monica Hills and Malibu coastal areas also affected, perhaps due to temporary pandemic relocation and vacation homes.

Source: Ong & Associates, calculated from U.S. Census Bureau data.



# COMMUNITY OF INTEREST

Need to understand multiple dimensions to define common interests that can be addressed by elected officials. What people and places share in common economically, socially, culturally and politically. The concept and analytical methods have evolved and become more sophisticated. Next round will require multiple data sources -- traditional ones such as the Decennial Census, ACS and voter/voting data; new sources LEHD, COVID outcomes, administration records and Big Data. Need better methods of clustering neighborhoods with cross cutting commonalties.

# SMALL AREA POPULATION PROJECTIONS

Redistricting has a decade long implications. Not required but critical for growing populations. Some public agencies and private sector analysts do regional and city projections (e.g. SCAG, LAUSD). The quality of small area projections varies across sources, and few are “localized”.